

GENERAL NOTES

- ALL CONSTRUCTION, MATERIALS AND DETAILS FOR THIS PROJECT SHALL BE IN ACCORDANCE WITH THE CONTRACT DOCUMENTS, DRAWINGS, SUMMERLIN IMPROVEMENT STANDARDS, AND THE UNIFORM STANDARD SPECIFICATIONS FOR PUBLIC WORKS CONSTRUCTION, OFFSITE IMPROVEMENTS, CLARK COUNTY AREA, NEVADA, 1986.
- 48 HOURS PRIOR TO THE START OF CONSTRUCTION, THE CONTRACTOR SHALL CONTACT:
 - LAS VEGAS VALLEY WATER DISTRICT PHONE 870-2011
 - NEVADA POWER COMPANY PHONE 1-800-227-2600
 - CENTRAL TELEPHONE COMPANY PHONE 1-800-227-2600
 - SOUTHWEST GAS CORPORATION PHONE 365-2296
- LOCATIONS OF UNDERGROUND UTILITIES SHOWN ON THE DRAWINGS WERE OBTAINED FROM INFORMATION RECEIVED FROM THE APPLICABLE UTILITY COMPANIES. NEITHER THE OWNER NOR ENGINEER ASSUMES ANY RESPONSIBILITY FOR EXISTING UTILITIES OR STRUCTURES NOT SHOWN, OR NOT IN THE LOCATIONS SHOWN ON THE DRAWINGS. CONTRACTOR TO VERIFY THE EXACT LOCATION OF UTILITIES PRIOR TO START OF CONSTRUCTION. THE CONTRACTOR'S RESPONSIBILITY REGARDING UTILITIES SHALL BE AS REQUIRED UNDER SECTION 107.11 OF THE UNIFORM STANDARD SPECIFICATIONS FOR CLARK COUNTY AREA, NEVADA AND AS PROVIDED IN THE SPECIFICATIONS. THE CONTRACTOR SHALL USE EXTREME CAUTION WHEN WORKING OVER OR NEAR THE EXISTING GAS MAINS.
- THE CONTRACTOR SHALL TAKE ALL PRECAUTIONARY MEASURES NECESSARY TO PROTECT EXISTING IMPROVEMENTS WHICH ARE TO REMAIN IN PLACE FROM DAMAGE AND ALL SUCH IMPROVEMENTS OR STRUCTURES DAMAGED BY THE CONTRACTOR'S OPERATIONS SHALL BE REPAIRED OR RECONSTRUCTED SATISFACTORY TO THE ENGINEER AT THE EXPENSE OF THE CONTRACTOR.
- THE CONTRACTOR SHALL NOT REMOVE TREES, SHRUBS, LAWNS, WALLS, FENCES, SIGNS, STRUCTURES, LIGHTS, OR ANY EXISTING IMPROVEMENTS OUTSIDE OF STREET RIGHT-OF-WAY, EXCEPT WHERE REQUIRED TO DO SO BY THE CONTRACT DRAWINGS OR BY THE ENGINEER.
- TREES, SHRUBS, LAWNS, WALLS, FENCES, SIGNS, STRUCTURES, LIGHTS AND OTHER EXISTING IMPROVEMENTS WITHIN STREET RIGHTS-OF-WAY SHALL BE REMOVED WHERE SHOWN ON THE CONTRACT DRAWINGS, AND AS REQUIRED BY THE ENGINEER.
- REPLACEMENT, RELOCATION OR RECONSTRUCTION OF ALL EXISTING IMPROVEMENTS INCLUDING SPRINKLER SYSTEMS, LAWNS, FENCES, WALLS, SIGNS, STEPS, SIDEWALKS, DRIVEWAYS, LAWN LIGHTS, AND ALL OTHER ITEMS APPLICABLE TO THIS CONTRACT SHALL BE AS REQUIRED BY THE ENGINEER.
- THE CONTRACTOR SHALL BACKFILL AND FINE GRADE ALL CUT OR FILL SLOPES TO MATCH EXISTING CONDITIONS TO THE SATISFACTION OF THE ENGINEER. WHERE EXISTING LAWNS ARE DAMAGED BY THE CONTRACTOR'S OPERATIONS, THE CONTRACTOR SHALL RE-SEED AND/OR SOO THE AFFECTED AREA TO A CONDITION EQUAL TO OR BETTER THAN EXISTED PRIOR TO CONSTRUCTION.
- ALL BARRICADING AND TEMPORARY TRAFFIC CONTROL DEVICES OR METHODS USED DURING CONSTRUCTION SHALL BE IN ACCORDANCE WITH THE "NEVADA TRAFFIC CONTROL MANUAL," 1985, PUBLISHED BY THE STATE OF NEVADA, DEPARTMENT OF HIGHWAYS, EXCEPT AS OTHERWISE PROVIDED IN THE CONTRACT SPECIFICATIONS OR AS REQUIRED BY THE ENGINEER.
- AT THE TIME OF PRE-CONSTRUCTION CONFERENCE, THE CONTRACTOR SHALL FURNISH, FOR APPROVAL, A TRAFFIC BARRICADING PLAN AND THE METHOD OF MAINTAINING PUBLIC CONVIENANCE AND SAFETY THROUGHOUT THE CONSTRUCTION AREA. TRAFFIC BARRICADING PLANS SHALL COMPLY WITH APPLICABLE PORTIONS OF SECTIONS 624 AND 625 OF THE STANDARD SPECIFICATIONS, THE TRAFFIC CONTROL MANUAL AND APPLICABLE CITY ORDINANCES.
- THE CONTRACTOR SHALL NOT BE RESPONSIBLE FOR THE VERTICAL ADJUSTMENT OF EXISTING SANITARY, WATER AND STORM SEWER MANHOLES TO THE FINAL FINISH GRADES EXCEPT AS NOTED ON THE CONTRACT DRAWINGS, AND IN ACCORDANCE WITH SECTION 609 OF THE "STANDARD SPECIFICATIONS," AND ANY VERTICAL ADJUSTMENTS OF WATER VALVE BORES AND OTHER APPURTENANCES SHALL BE IN ACCORDANCE WITH THE DETAILS SHOWN ON THE CONTRACT DRAWINGS.
- REFERENCE IS MADE TO THE "SUMMERLIN IMPROVEMENT STANDARDS" FOR CONSTRUCTION DETAILS. STANDARDS AVAILABLE FROM OWNER.
- NOTICE: GRADING AUTHORIZED ONLY AFTER PERMITTEE'S FULL COMPLIANCE WITH FEDERAL ENDANGERED SPECIES ACT.

GRADING NOTES

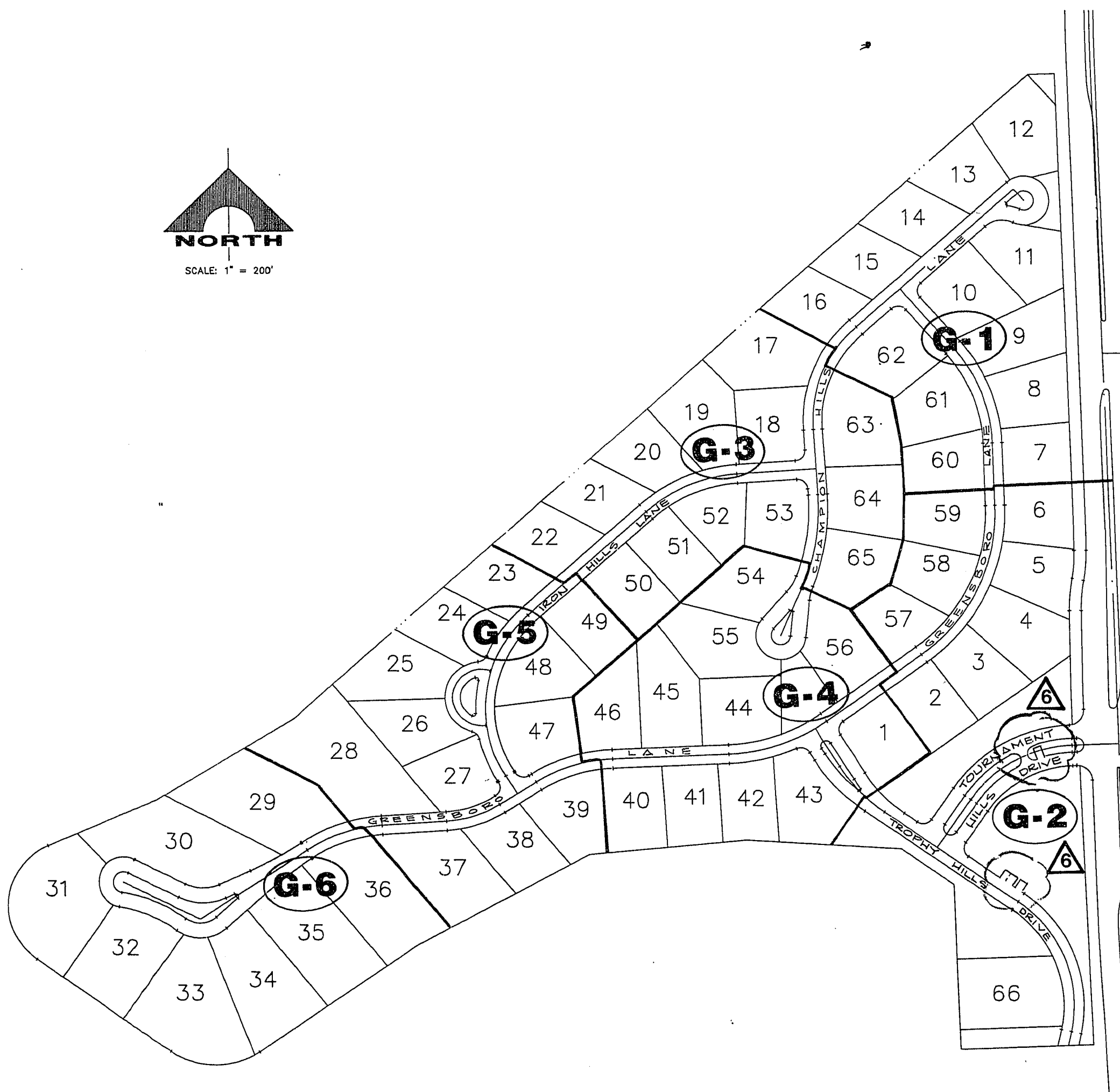
- INDICATED GRADES OTHER THAN T.C., F.G. & GUTTER F.L. ARE ROUGH GRADES (0.3' LOWER THAN FINISHED GRADE).
- THE ROUGH GRADING PLANS SHALL BE ON THE JOB SITE AT ALL TIMES. THE ROUGH GRADING SHALL BE FINISHED IN CONFORMANCE WITH THE LINES AND GRADES SHOWN ON THE PLANS. THE GRADING QUANTITIES ARE BASED ON THE ELEVATION AND DETAILS SHOWN ON THE PLANS. ANY DEVIATION FROM THE PLANS WILL RESULT IN QUANTITY CHANGES.
- CARE SHOULD BE EXERCISED IN GRADING OF REAR YARDS OF CORNER AND "B" TYPE DRAINAGE LOTS.
- ROUGH PAD ELEVATIONS SHALL BE GRADED TO WITHIN 0.1' OF THE PAD ELEVATIONS SHOWN ON THE PLANS. WHEN GRADING IS COMPLETE PER THE PLANS, THE CONTRACTOR SHALL NOTIFY THE ENGINEER SO THAT THE LOTS CAN BE INSPECTED. AT THAT TIME, THE ENGINEER SHALL ALSO DECIDE IF ANY ADDITIONAL DITCHES OR BERMS ARE REQUIRED. THE CONTRACTOR IS REQUESTED NOT TO REMOVE ANY OF HIS ROUGH GRADING EQUIPMENT UNTIL HE RECEIVES GRADING APPROVAL FROM THE ENGINEER.
- SOILS REPORTS PREPARED BY WESTERN TECHNOLOGIES, INC., PROJECT NO. 4126181, DATED JULY 16, 1988 AND PROJECT NO. 4126185, DATED AUGUST 13, 1988.
- EARTH QUANTITIES:

EXCAVATION	C.Y.
FILL	C.Y.

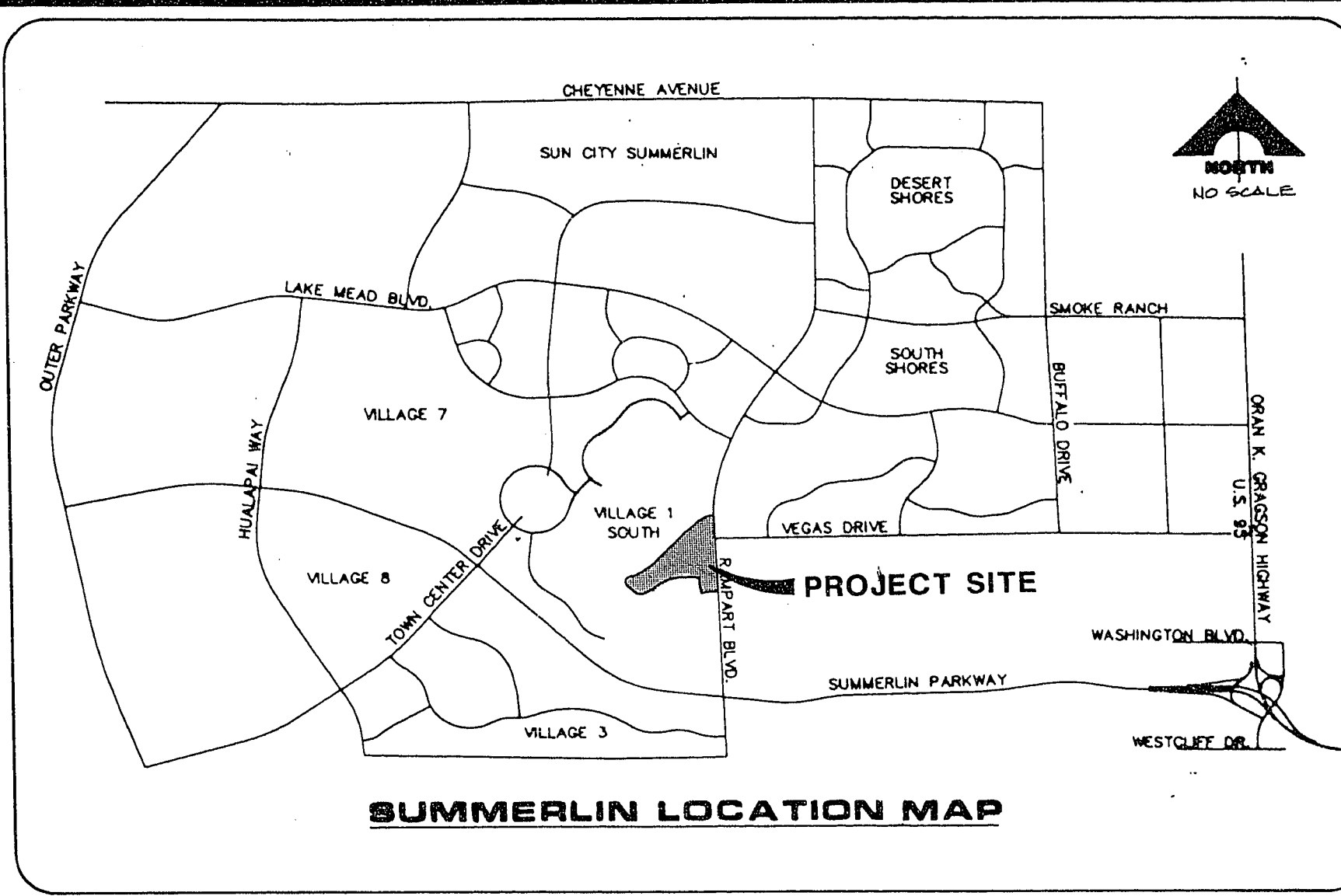
 - THE ABOVE QUANTITIES DO NOT REFLECT LOSSES DUE TO SUBSIDENCE OR SHRINKAGE.
 - THE ABOVE QUANTITIES DO NOT REFLECT USING TYPE 1 GRAVEL BASE MATERIAL FOR STREET SECTIONS.
 - THE ABOVE QUANTITIES DO NOT INCLUDE EARTHWORK TO CONSTRUCT PERIMETER SWALES, DITCHES & BERMS NOT SHOWN ON THE PLANS.
- CUT FROM TOP OF CURB TO ROUGH GRADING DOES NOT INCLUDE TYPE 1 GRAVEL BASE.
- THE PRODUCT FINISHED FLOOR SHALL BE A MINIMUM OF 0.7' ABOVE ROUGH PAD GRADE.
- ROUGH GRADES IN BACK OF ALL CURBS SHALL BE 0.3' BELOW FINISHED GRADE.

LEGEND

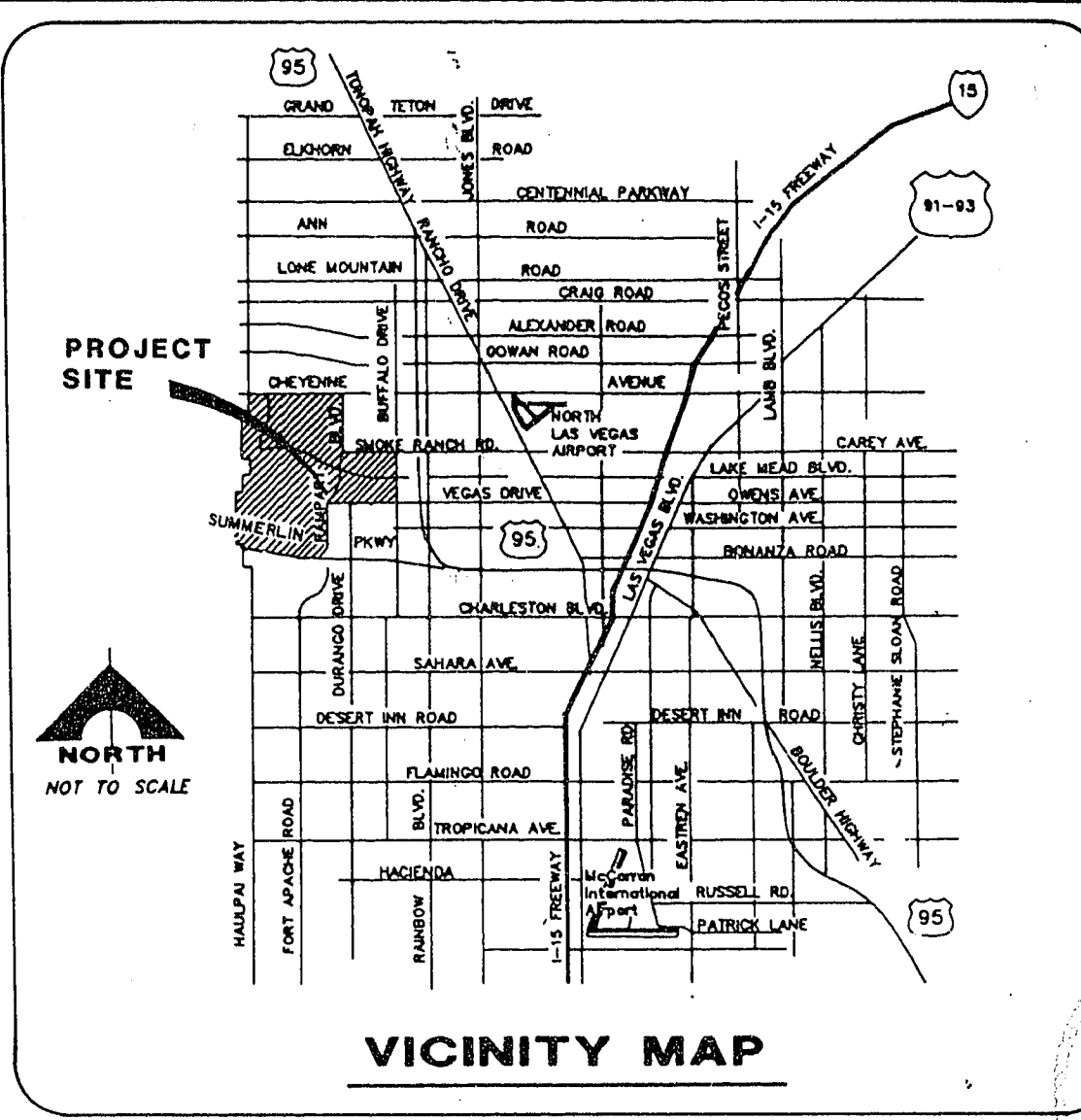
- | | | | |
|--|------------------------|--|-----------------------|
| | LOT NUMBER | | EXISTING ELEVATION |
| | PAD ELEVATION | | FUTURE ELEVATION |
| | EXISTING PAD ELEVATION | | ROUGH GRADE ELEVATION |
| | FUTURE PAD ELEVATION | | EXISTING CONTOUR |
| | FINISH GRADE | | EXISTING BLOCK WALL |
| | 2:1 SCARP | | PAD SETBACK |
| | DITCH OR SWALE | | |



SHEET INDEX MAP



SUMMERLIN LOCATION MAP



VICINITY MAP

INDEX OF DRAWINGS

SHEET NO.	DESCRIPTION
1	COVER SHEET
2	GENERAL NOTES, ABBREVIATIONS AND LEGEND
G-1	GRADING PLAN 1
G-2	GRADING PLAN 2
G-3	GRADING PLAN 3
G-4	GRADING PLAN 4
G-5	GRADING PLAN 5
G-6	GRADING PLAN 6
G-7	GRADING DETAILS AND NOTES

QUANTITIES

CUT	79,530	C.Y.
FILL	66,535	C.Y.

NOTE: QUANTITIES SHOWN ARE RAW QUANTITIES. NO ADJUSTMENTS HAVE BEEN MADE FOR SHRINKAGE/SWELL.

APPROVALS

CITY OF LAS VEGAS

5-14-91

AGENCY	REVIEWED BY	DATE
NEVADA POWER CO.		
SOUTHWEST GAS CORP.		
CENTRAL TELEPHONE CO.		
L.V. VALLEY WATER DIST.		

BASIS OF BEARING

N 01°12'43" E. IS BASED ON THE NEVADA STATE GRID SYSTEM (EAST ZONE) AS DETERMINED FROM THE TRIANGULATION POINTS "RED ROCK" TO "LOVE MOUNTAIN."

BENCHMARK

CONCRETE MONUMENT WITH 2" BRASS CAP. MONUMENT NO. 7 - PER VILLAGE 1 NORTH & SOUTH MONUMENT CONTROL PLAN DATED JUNE 5, 1990, REVISION NO. 2. ELEVATION 2652.25. C.I.V. DATUM

Avoid cutting underground utility lines. It's costly.

Call before you Dig.

1-800-227-2600

129

RECOMMENDED

DATE: 5-14-91

BY: CHRISTOPHER ANDERSON

SCALE: 1" = 200'

PROJECT: SUMMERLIN VILLAGE 1 SOUTH TOURNAMENT HILLS

G.C. WALLACE, INC.
Engineering/Architecture

GENERAL NOTES, ABBREVIATIONS & LEGEND

SHEET **2** OF 9

620.704ED