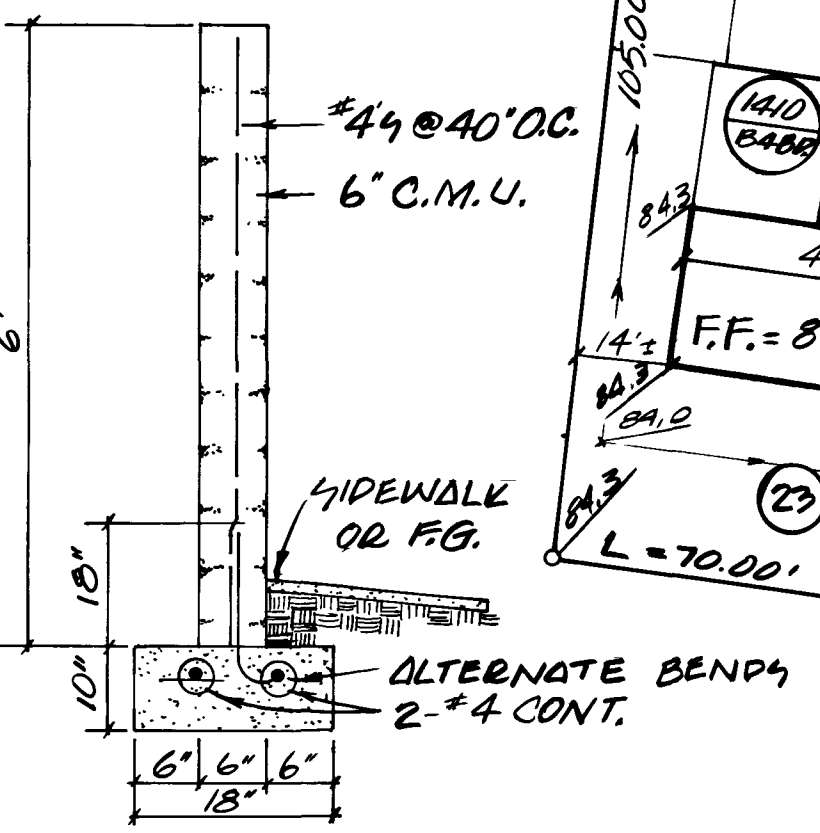
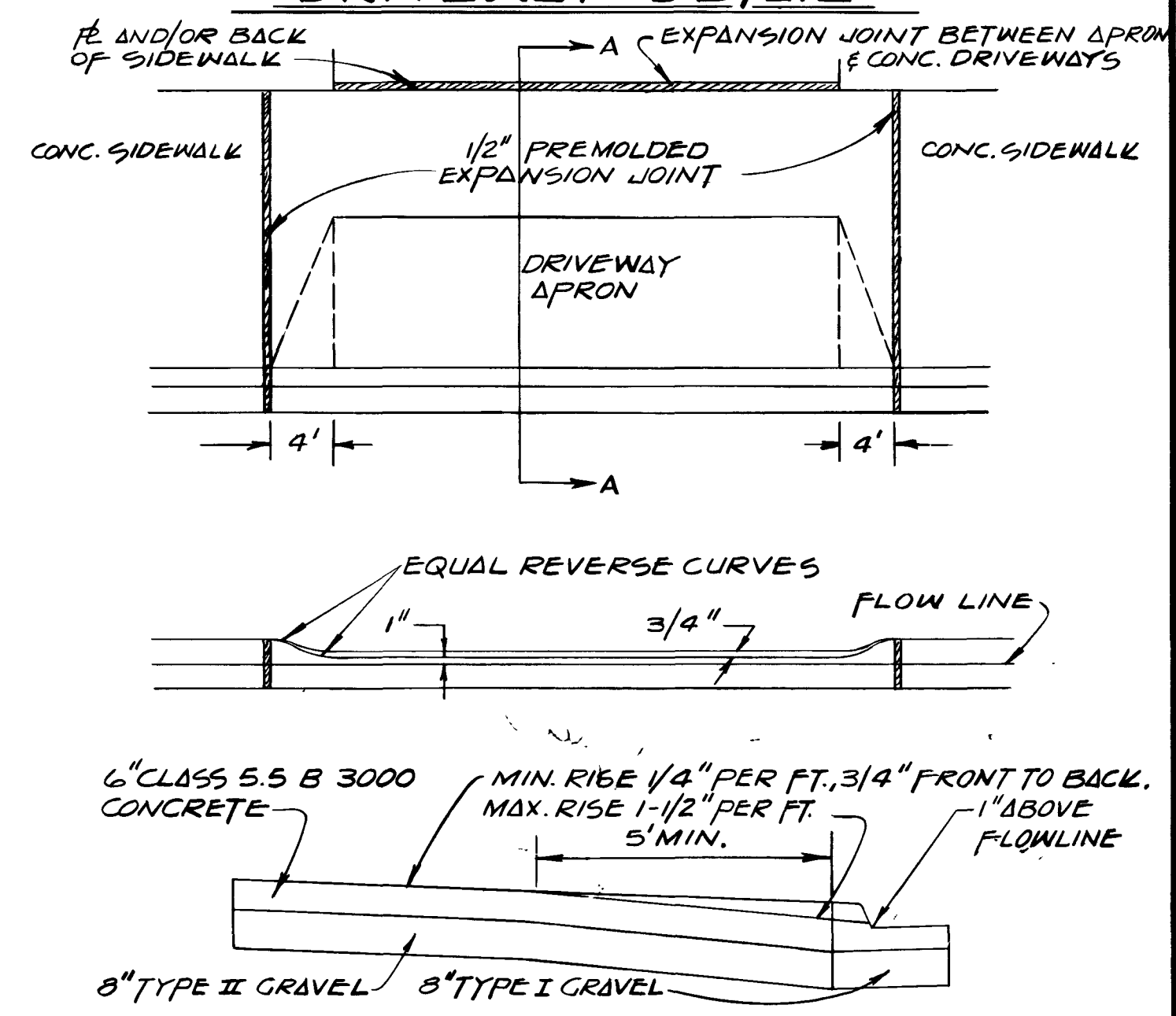


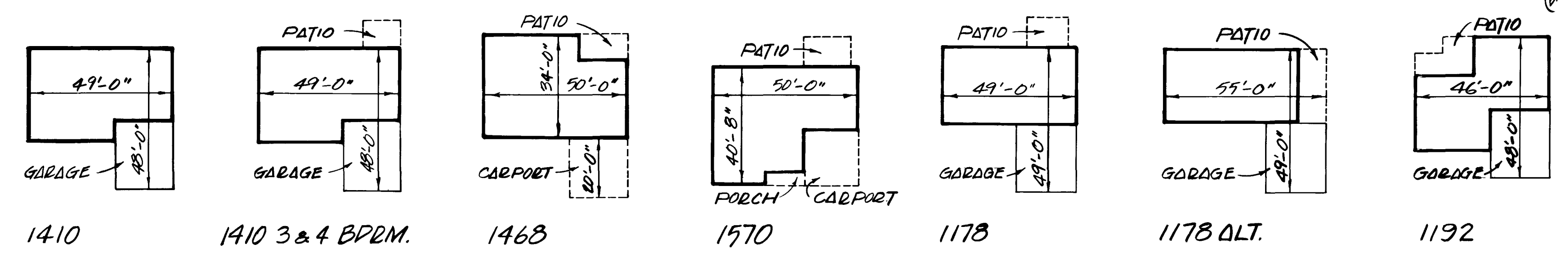
**LEGEND**

- ① LOT NUMBER
- ② BLOCK NUMBER
- 12.10 TOP OF CURB
- 13.55 FINISH GRADE
- 84.00
- SCREEN WALL
- DRAINAGE SWALE
- FF=81.5 FINISH FLOOR ELEV.
- 1178 MODEL NUMBER
- ALT. ALTERNATE MODEL
- BEVERE BEVERE

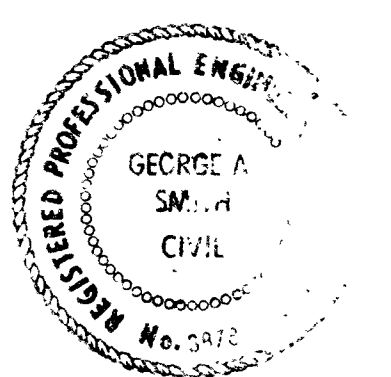
**DRIVEWAY DETAIL**



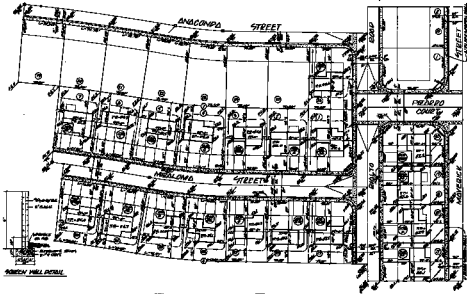
SCREEN WALL DETAIL



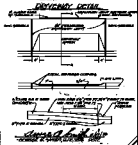
George A. Smith 2/17/78  
 GEORGE A. SMITH, P.E. 3878 DATE



TORREY PINES PARK - N933  
 1435 VEGAS  
 DEVELOPMENT PLAN  
 SOUTH SECTION  
 GEORGE A. SMITH & CO.  
 SUITE 114  
 1475 VEGAS, NEVADA 89102  
 008-002-77  
 SHEET 4 OF 10



- LEGEND**
- 1/2" DIA. COLUMN
  - 1/4" DIA. COLUMN
  - 1/8" DIA. COLUMN
  - 1/16" DIA. COLUMN
  - 1/32" DIA. COLUMN
  - 1/64" DIA. COLUMN



**JOSEPH EDWARD PERRY, INC.**  
**ENGINEERS AND ARCHITECTS**  
 1000 NORTH 1ST STREET  
 PHOENIX, ARIZONA