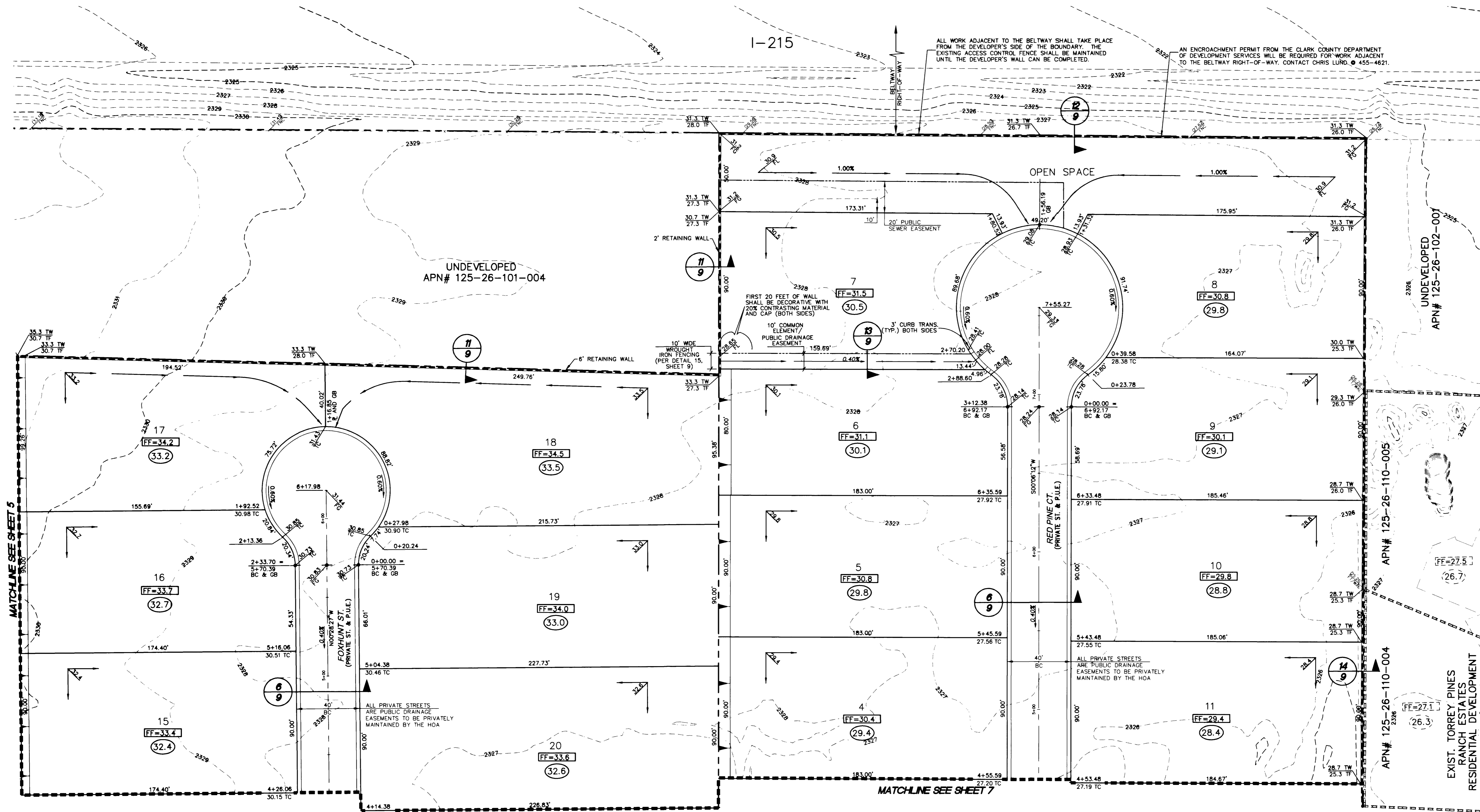


I-215

ALL WORK ADJACENT TO THE BELTWAY SHALL TAKE PLACE FROM THE DEVELOPER'S SIDE OF THE BOUNDARY. THE EXISTING ACCESS CONTROL FENCE SHALL BE MAINTAINED UNTIL THE DEVELOPER'S WALL CAN BE COMPLETED.

AN ENCROACHMENT PERMIT FROM THE CLARK COUNTY DEPARTMENT OF DEVELOPMENT SERVICES WILL BE REQUIRED FOR WORK ADJACENT TO THE BELTWAY RIGHT-OF-WAY. CONTACT CHRIS LUND, 455-4621.



MATCHLINE SEE SHEET 5

MATCHLINE SEE SHEET 7

UNDEVELOPED
APN# 125-26-101-004

UNDEVELOPED
APN# 125-26-102-001

APN# 125-26-110-005

APN# 125-26-110-004

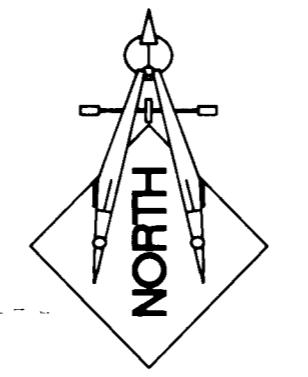
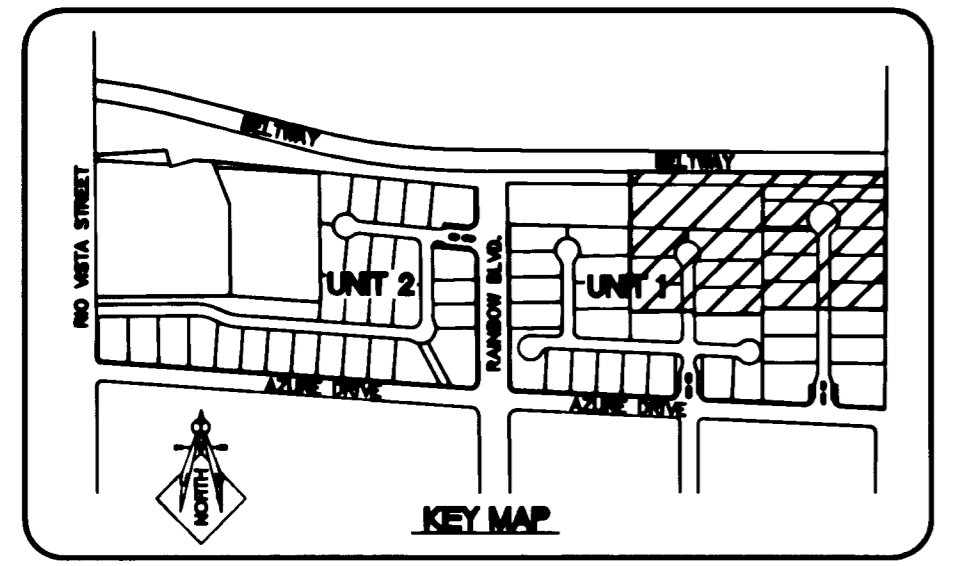
EXIST. TORREY PINES
RANCH ESTATES
RESIDENTIAL DEVELOPMENT
DWG# 10744547

US HOME CORPORATION
3765 EAST SUNSET BLVD., SUITE B-1
LAS VEGAS, NEVADA 89120
(702) 438-7700

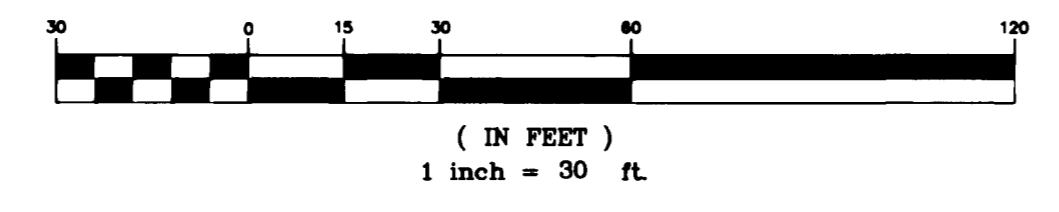
LOCHSA ENGINEERING
5828 SPRING MTN. RD. SUITE 308
LAS VEGAS, NV 89191
PHONE: (702) 365-9312, FAX: (702) 320-1769

GRADING PLAN no.4

TORREY PINES II
UNIT I



GRAPHIC SCALE



BENCHMARK

CLV BM
SLV90 27NEE6
BEING A RIVET AND PLATE IN TOP OF CURB SW
CORNER OF RAINBOW AND AZURE
ELEVATION: 2332.76 FEET / 711.0260 METERS
(NAVD '88)

BASIS OF BEARINGS

THE BASIS OF BEARINGS FOR THIS SURVEY IS THE WEST LINE OF THE NORTHEAST QUARTER (NE 1/4) OF THE NORTHEAST QUARTER (NE 1/4) OF SECTION 27, TOWNSHIP 19 SOUTH, RANGE 60 EAST, M.D.M., CLARK COUNTY, NEVADA, AS SHOWN BY THAT RECORD OF SURVEY ON FILE IN FILE 89 OF SURVEYS, PAGE 03, OFFICIAL RECORDS, CLARK COUNTY, NEVADA.
SAID LINE BEARS NORTH 00°24'13" WEST.

LEGAL DESCRIPTION

A PORTION OF THE NORTHEAST QUARTER (NE 1/4) OF SECTION 27 AND THE NORTHWEST QUARTER (NW 1/4) OF SECTION 28, TOWNSHIP 19 SOUTH, RANGE 60 EAST, M.D.M., CLARK COUNTY, NEVADA.

LEGEND

- 1 LOT NUMBER
- (00.0) PAD GRADE
- (FF=25.8) FINISH FLOOR
- 72 EXIST. CONTOUR
- GRADE BREAK
- EASEMENT LINE
- RIGHT OF WAY
- CENTERLINE
- LOT LINE
- BLOCK WALL
- RETAINING WALL
- SAWCUT LINE
- FLOW DIRECTION
- FINISH GRADE
- TOP OF CURB
- TOP OF BERM
- FLOWLINE
- TOP OF FOOTING
- EXIST. GRADE

PRIVATE STREET NOTE

ALL PRIVATE STREETS ARE P.U.E.'S. CLV PUBLIC SEWER EASEMENTS AND PUBLIC DRAINAGE EASEMENTS TO BE PRIVATELY MAINTAINED.

CALL BEFORE YOU DIG
800-227-2600
WWW.CALLBEFOREYU DIG.COM

CALL BEFORE YOU DIG
OVERHEAD
1-702-593-6111
WWW.CALLBEFOREYU DIG.COM

I CERTIFY THAT THIS GRADING PLAN CONFORMS TO THE APPROVED DRAINAGE STUDY ON RECORD WITH THE CITY OF LAS VEGAS.
Michael P. Valpando 11/7/03
MICHAEL WALPANDO, P.E., No. 12631 DATE

DRAWN BY:	C. CRONQUIST	DATE:	6/22/03
DESIGNED BY:	C. CRONQUIST	DATE:	6/22/03
CHECKED BY:	M. WALPANDO	DATE:	6/22/03
PROJECT NO.:	9005	SCALE:	1"=30'
SHEET NO.:	8	OF 20	
DRAWING NO.:	10744780-1		

C:\CAD\2005\dwg\10744780-1.dwg - 11/07/03 05:33:17 PM - P.L. Lochsa Civil

60828