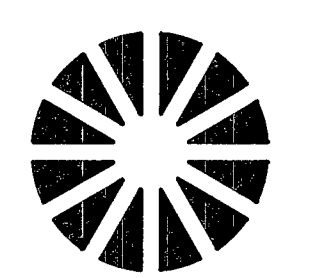


PROJECT: _____
 SEG/SPAN: SEG
 FROM _____
 TO _____
 TO _____
 SECTION: 11
 TOWNSHIP: 20S
 RANGE: 60E



Know what's below.
 Call before you dig.



CenturyLink

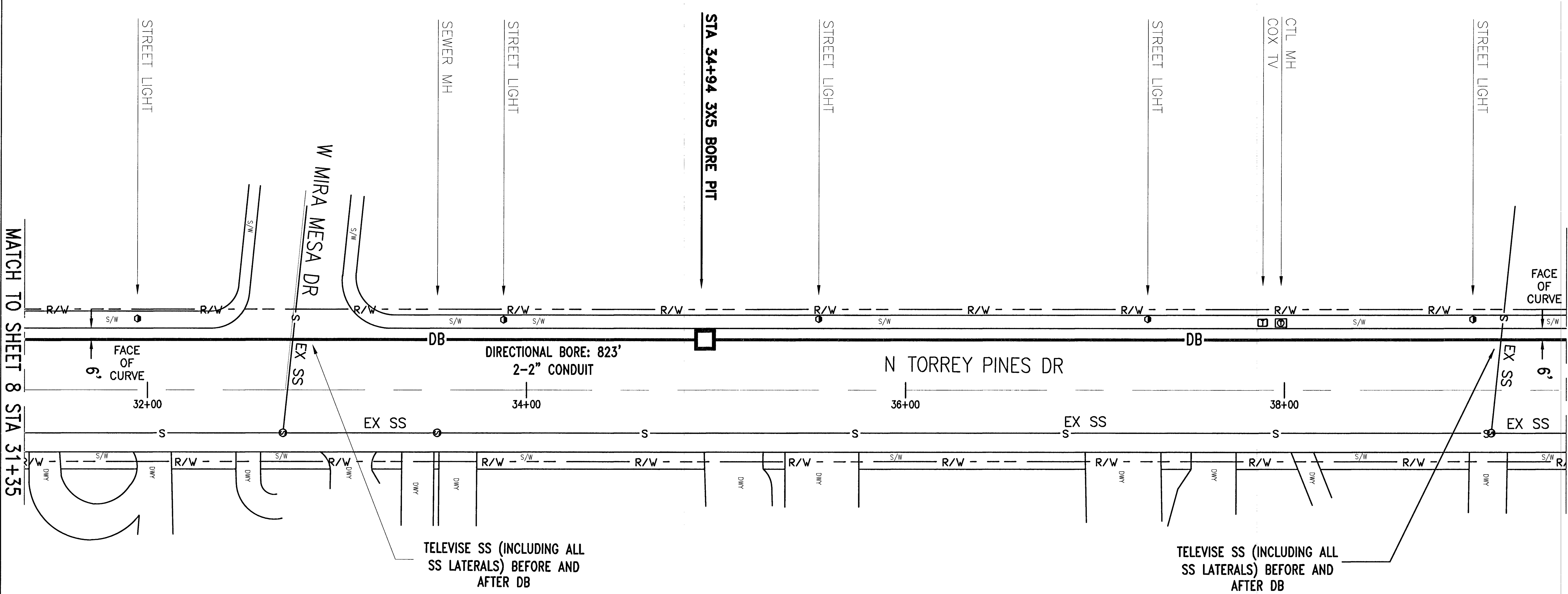
TITLE: FIBER OPTIC CABLE ROUTE

N. TORREY PINES DR
 GOWAN RD TO CRAIG RD

REVISIONS

DATE	DESCRIPTION	INITIAL

MP TO MP
 SHEET 9 OF 11
 DWG. NO. CTL E.422282

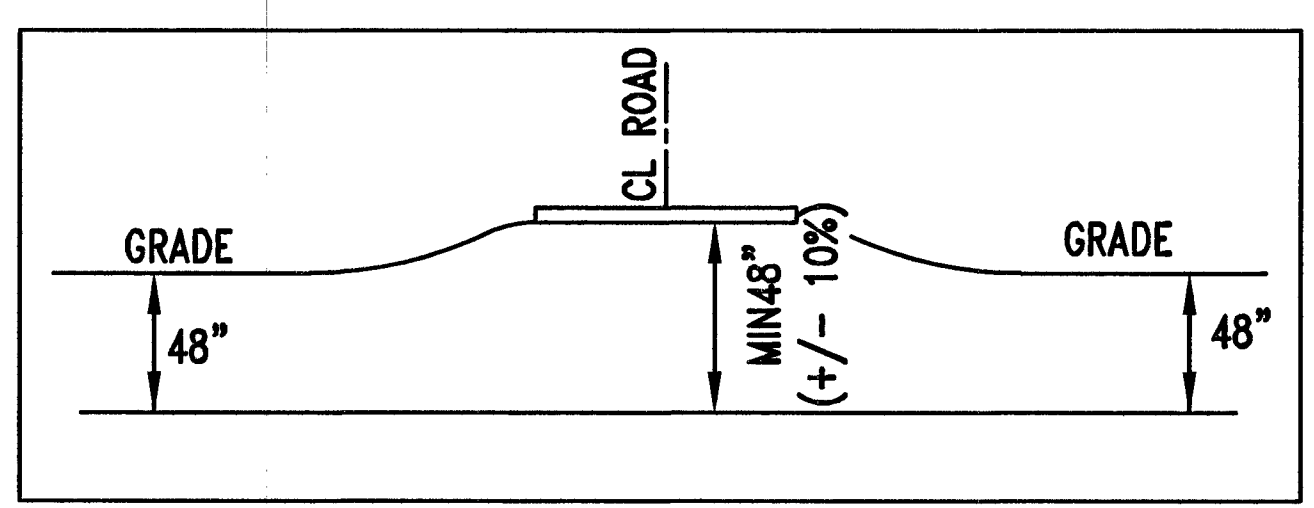


MATCH TO SHEET 8 STA 31+35

MATCH TO SHEET 10 STA 39+58

NOTE:
 DUE TO EXISTING UTILITIES THE CONTRACTOR WILL AT VARIOUS TIMES NEED TO OPEN A WINDOW IN ASPHALT ROADWAY OR SIDEWALK TO DETERMINE EXISTING UTILITY DEPTHS. THE WINDOW WILL BE REPAIRED TO CITY SPECIFICATIONS AS DICTATED BY THE CITY INSPECTOR. POT HOLE LOCATIONS NOT SHOWN ON PLAN REQUIRE SEPARATE PERMIT.

PAGE NARRATIVE:
 CONTINUE BORING NORTH ALONG N TORREY PINES DR A DISTANCE OF 823'.



DIRECTIONAL BORE DETAIL
 NOT TO SCALE

RUS LIST	EST QTY	ACT QTY
BM60(2-2)PD	823'	
BFOV(2)(2)OT	-	
BORE PIT	1	
BM73	5'	