

PROJECT: _____

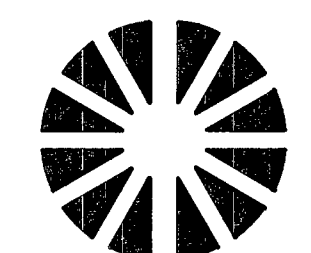
SEG/SPAN: SEG

FROM _____
TO _____

SECTION: 11
TOWNSHIP: 20S
RANGE: 60E



Know what's below.
Call before you dig.



CenturyLink

TITLE: FIBER OPTIC CABLE ROUTE

N. TORREY PINES DR
GOWAN RD TO CRAIG RD

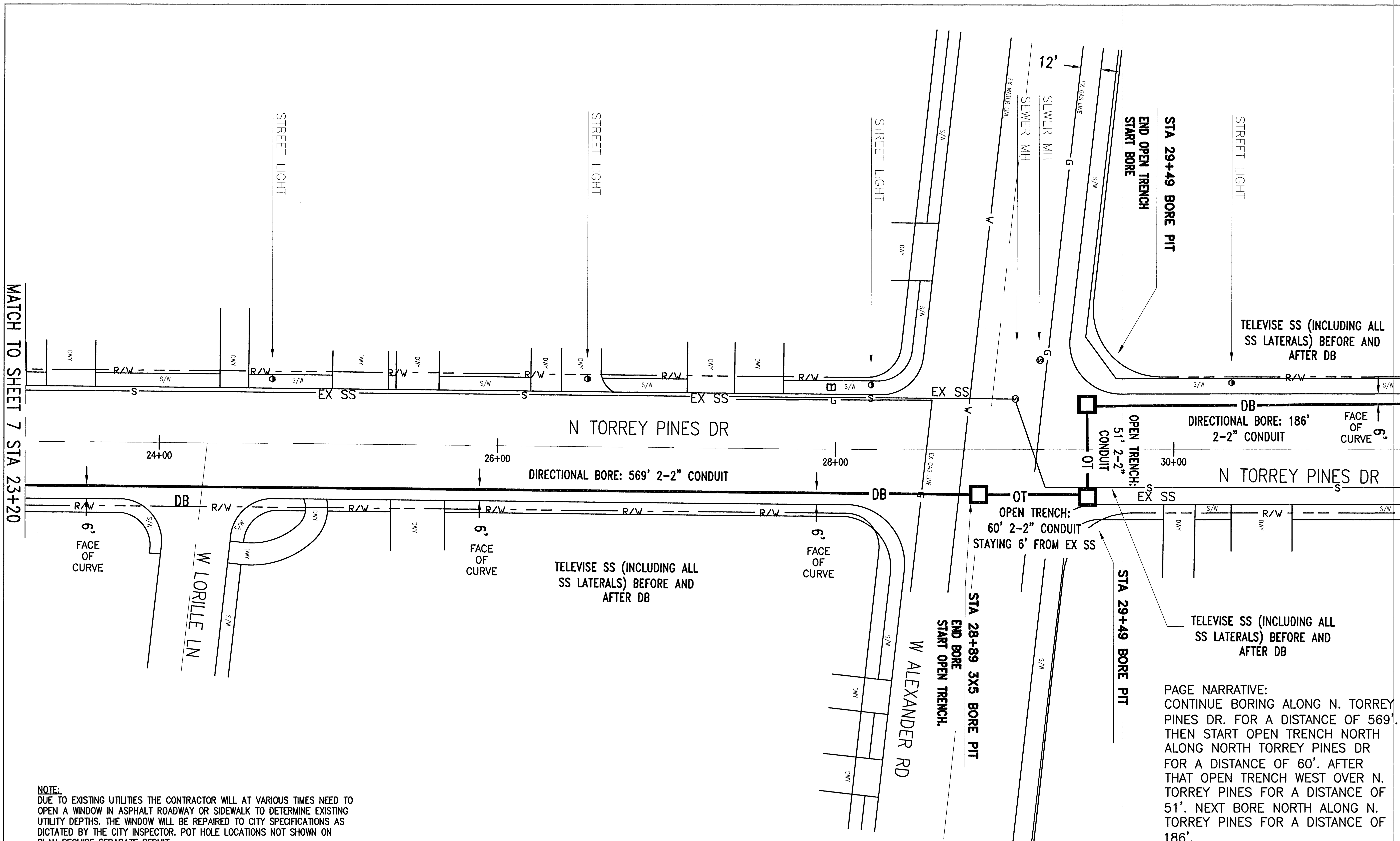
REVISIONS

DATE	DESCRIPTION	INITIAL

MP TO MP

SHEET 8 OF 11

DWG. NO. CTL E.422282

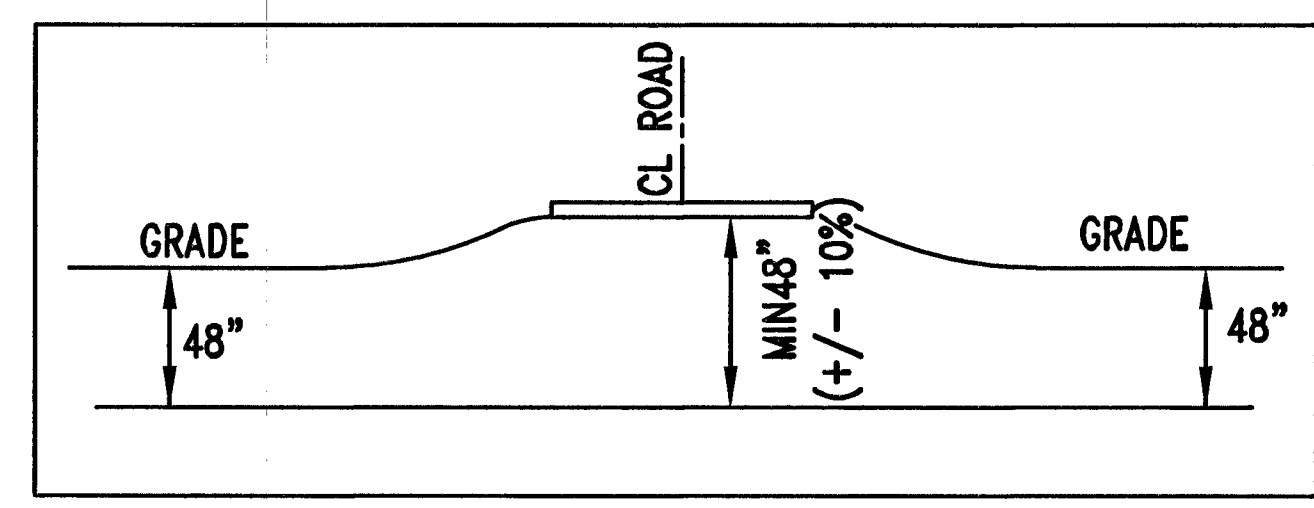


MATCH TO SHEET 7 STA 23+20

MATCH TO SHEET 9 STA 31+35

NOTE:
DUE TO EXISTING UTILITIES THE CONTRACTOR WILL AT VARIOUS TIMES NEED TO OPEN A WINDOW IN ASPHALT ROADWAY OR SIDEWALK TO DETERMINE EXISTING UTILITY DEPTHS. THE WINDOW WILL BE REPAIRED TO CITY SPECIFICATIONS AS DICTATED BY THE CITY INSPECTOR. POT HOLE LOCATIONS NOT SHOWN ON PLAN REQUIRE SEPARATE PERMIT.

RUS LIST	EST QTY	ACT QTY
BHF(30x60x30)T	0	
BFOV(2)(2)OT	111'	
BORE PIT	3	
BM60(2-2)	755'	
BM73	126'	



PAGE NARRATIVE:
CONTINUE BORING ALONG N. TORREY PINES DR. FOR A DISTANCE OF 569'. THEN START OPEN TRENCH NORTH ALONG NORTH TORREY PINES DR FOR A DISTANCE OF 60'. AFTER THAT OPEN TRENCH WEST OVER N. TORREY PINES FOR A DISTANCE OF 51'. NEXT BORE NORTH ALONG N. TORREY PINES FOR A DISTANCE OF 186'.