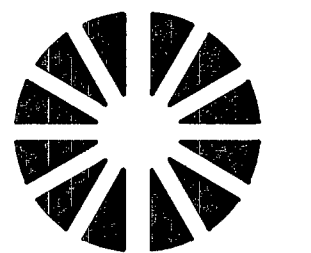


PROJECT: _____
 SEG/SPAN: _____ SEG
 FROM _____ TO _____
 SECTION: 11
 TOWNSHIP: 20S
 RANGE: 60E



Know what's below.
 Call before you dig.



CenturyLink

TITLE: FIBER OPTIC CABLE ROUTE
 N. TORREY PINES DR
 GOWAN RD TO CRAIG RD

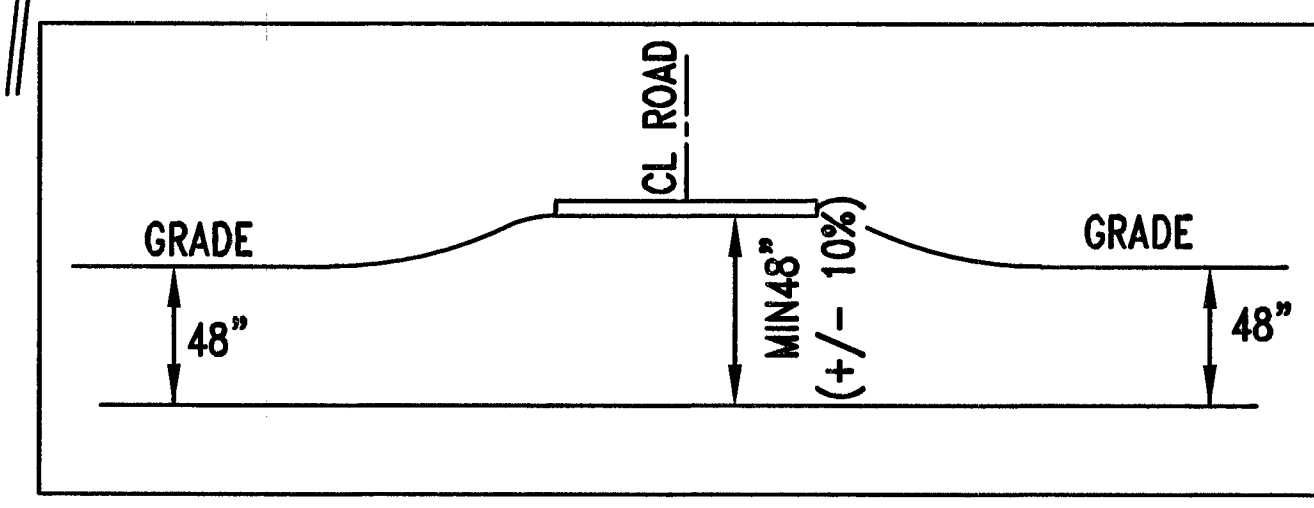
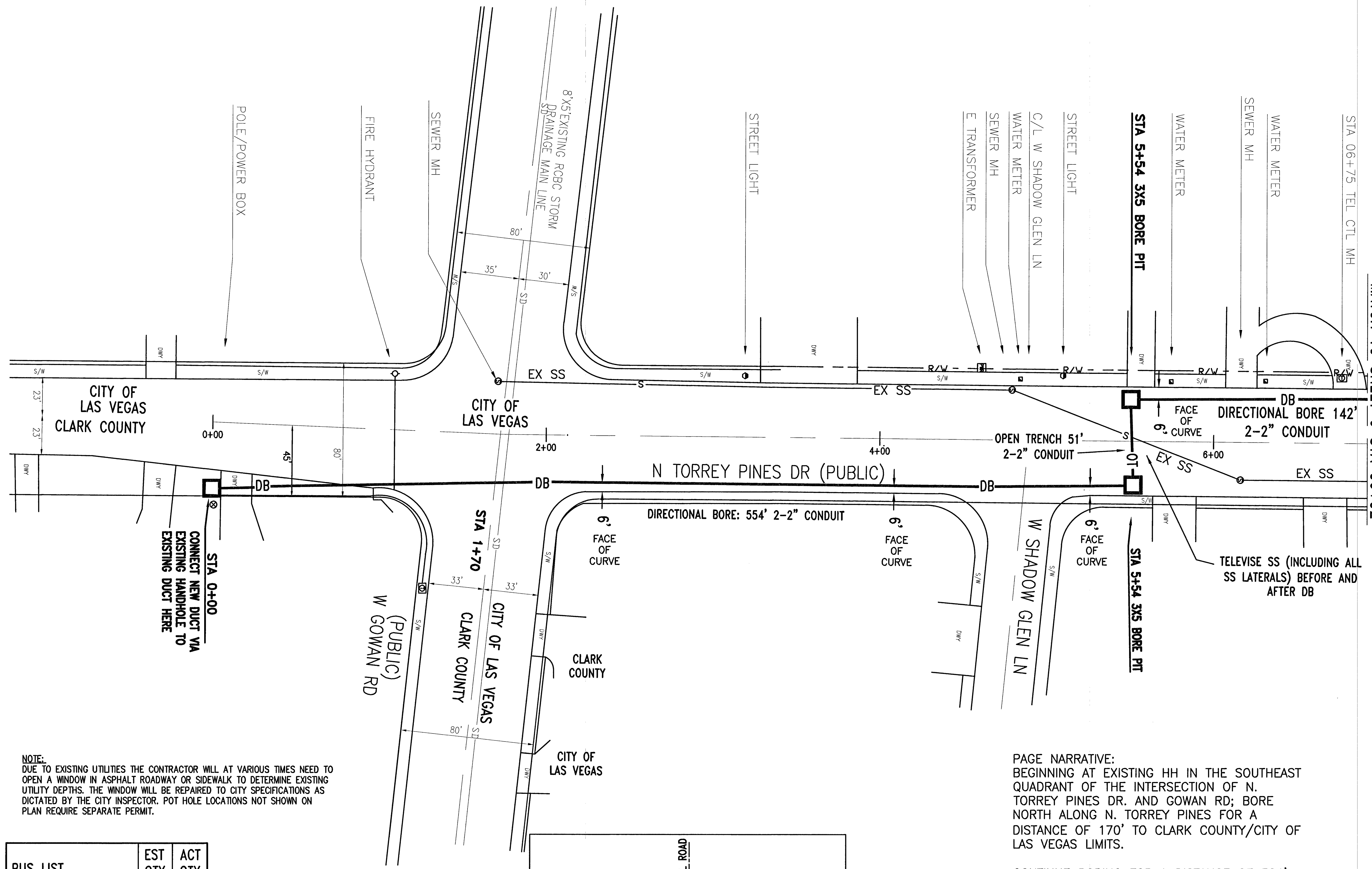
REVISIONS

DATE	DESCRIPTION	INITIAL

MP TO MP

SHEET 5 OF 11

DWG. NO. CTL E.422282



DIRECTIONAL BORE DETAIL
 NOT TO SCALE

NOTE:
 DUE TO EXISTING UTILITIES THE CONTRACTOR WILL AT VARIOUS TIMES NEED TO OPEN A WINDOW IN ASPHALT ROADWAY OR SIDEWALK TO DETERMINE EXISTING UTILITY DEPTHS. THE WINDOW WILL BE REPAIRED TO CITY SPECIFICATIONS AS DICTATED BY THE CITY INSPECTOR. POT HOLE LOCATIONS NOT SHOWN ON PLAN REQUIRE SEPARATE PERMIT.

RUS LIST	EST QTY	ACT QTY
BHF(30x60x30)T	-	
BFOV(2)(2)OT	51'	
BORE PIT	3	
BM60(2-2)PD	696'	
BM73 - R&R	66'	

PAGE NARRATIVE:
 BEGINNING AT EXISTING HH IN THE SOUTHEAST QUADRANT OF THE INTERSECTION OF N. TORREY PINES DR. AND GOWAN RD; BORE NORTH ALONG N. TORREY PINES FOR A DISTANCE OF 170' TO CLARK COUNTY/CITY OF LAS VEGAS LIMITS.

CONTINUE BORING FOR A DISTANCE OF 384'. NEXT OPEN TRENCH WEST OVER N. TORREY PINES FOR A DISTANCE OF 51'. THEN BORE NORTH FOR A DISTANCE OF 142'.

MATCH TO SHEET 6 STA 06+92