

Call before you Overhead
1-702-227-2929
NEVADA POWER ENVIRONMENT AND SAFETY SERVICES DEPARTMENT

Call before you Dig
1-800-227-2600

REVISION
DATE BY
10/17/03 JAW AND ST LAMBERT
10/17/03 JAW AND ST LAMBERT
10/17/03 JAW AND ST LAMBERT

TROPHY HOMES



STREETLIGHT, SIGNAGE AND STRIPPING PLAN

TIMBER RIDGE II

SHEET

SEPT. 2003

DESIGNED BY: DUE

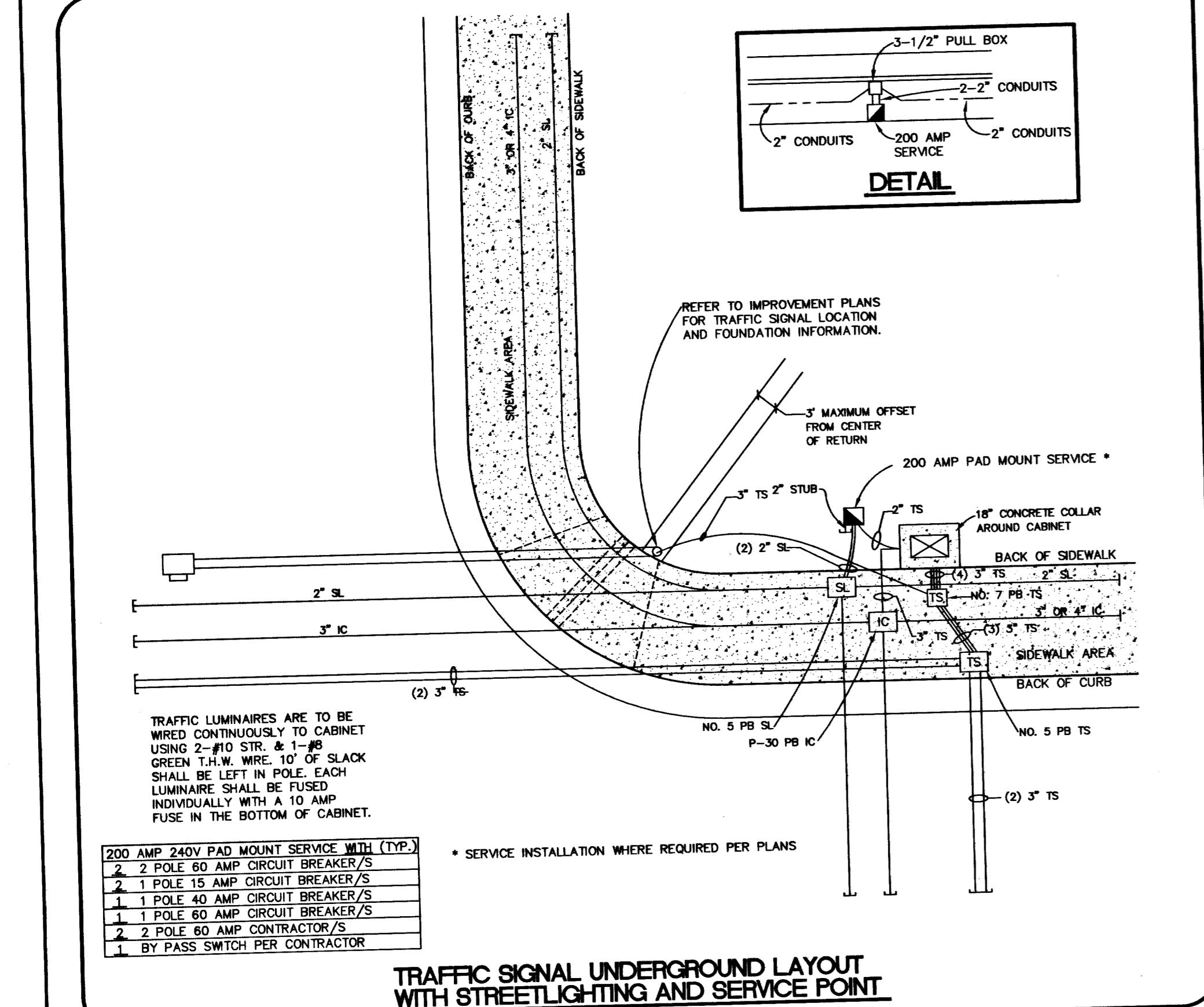
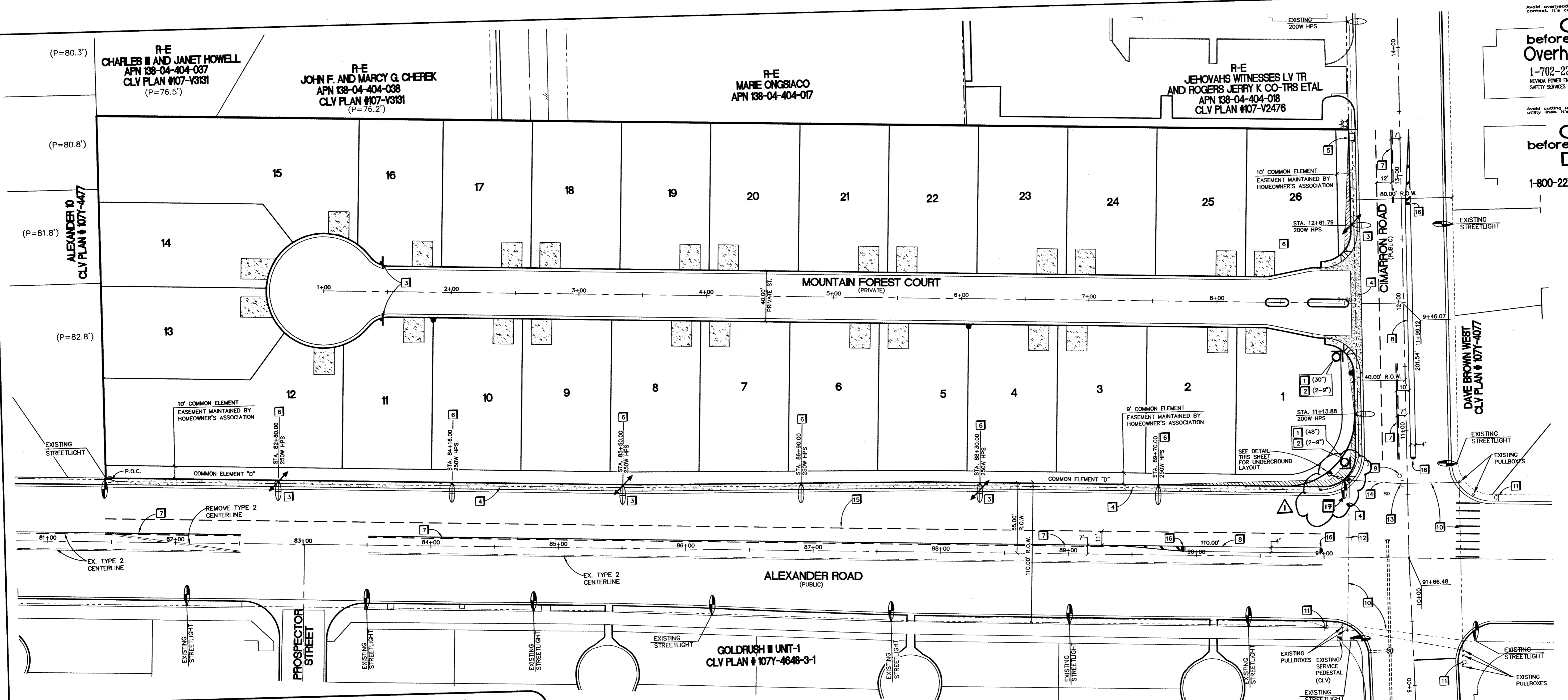
CHECKED BY: CAL

PROJECT NO: 511545

SCALE: 1"=40'

10 OF 10 SHEETS

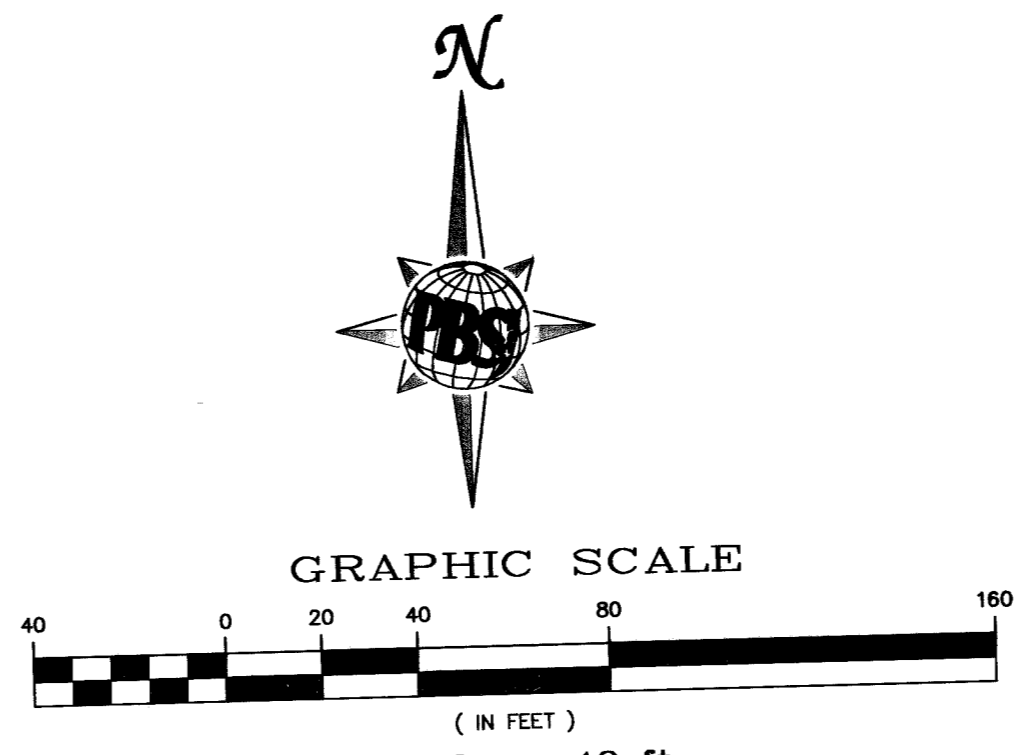
DRAWING NO. 1074773



NOTE
1.) SEE SHEET 2 FOR NOTES AND QUANTITIES
2.) SEE SHEET 5 FOR DETAILS

GENERAL NOTES
1. ALL STATIONING IS CENTERLINE STATIONING UNLESS OTHERWISE NOTED

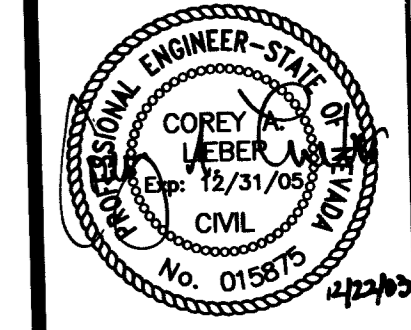
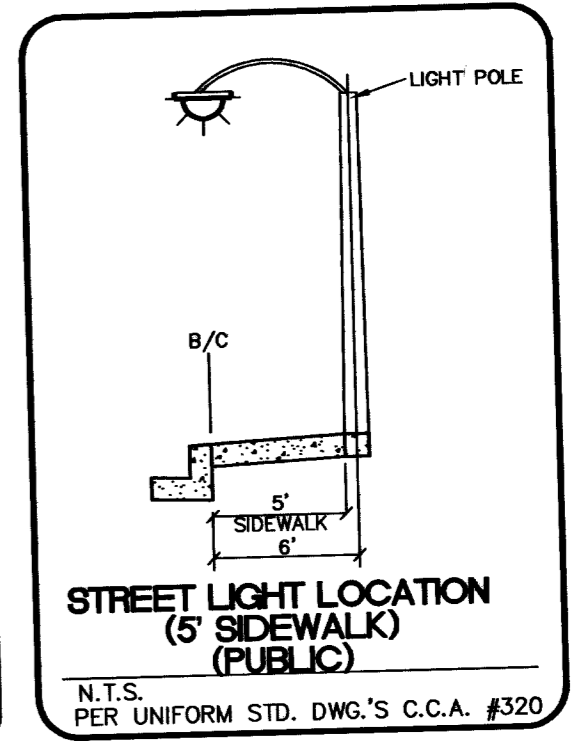
- CONSTRUCTION NOTES**
1. INSTALL R1-1 STOP SIGN PER MUTCD SEC. 2B-4.
 2. INSTALL 9" D-3 STREET NAME SIGN PER MUTCD SEC. 2D-39.
 3. INSTALL R8-3a, R7-1a NO PARKING SIGN.
 4. INSTALL 2" ELECTRICAL CONDUIT.
 5. INSTALL #3 1/2 PULLBOX.
 6. INSTALL STREETLIGHT AS INDICATED AND FOUNDATION PER CCAUSD 314, 320 AND 321.
 7. INSTALL TYPE 2 CENTERLINE PER CCAUSD No. 244.
 8. INSTALL TACK ON ISLAND PER CCAUSD No. 221.
 9. REMOVE EXISTING R1-1 STOP SIGN.
 10. EXISTING ELECTRICAL CONDUIT.
 11. EXISTING R1-1 STOP SIGN.
 12. EXISTING 2" ELECTRICAL CONDUIT STUB
 13. EXISTING 1-1/4" ELECTRICAL CONDUIT STUB
 14. INSTALL 1-1/4" ELECTRICAL CONDUIT
 15. INSTALL TYPE 4 LANE LINES PER CCAUSD No. 244A.
 16. PAINT MEDIAN NOSE PER CCAUSD No. 248.
 17. INSTALL 200V HPS WITH TYPE XX-A 20'-0" POLE AND 9L TYPE FOUNDATION PER CCAUSD #404, 406 AND 407, 409.



BENCHMARK
CITY OF LAS VEGAS BENCHMARK
NO. 81600 7M4 - RIVET AND PLATE
IN TOP OF CURB SOUTHEAST CORNER
OF ALEXANDER ROAD AND GRAND
CANYON DRIVE.
ELEVATION (NAVD 88) = 752.858 METERS
2601.24 FEET

BASIS OF BEARING
THE BASIS OF BEARINGS FOR THIS PROJECT
IS GRID NORTH AS DEFINED BY THE NEVADA
COORDINATE SYSTEM OF 1983 (NCS83), EAST
ZONE (4701), DETERMINED BY GIS CONTROL
POINTS "808" AND "877" AS SHOWN ON A
RECORD OF SURVEY ON FILE IN THE CLARK
COUNTY RECORDER'S OFFICE, IN FILE 88 OF
SURVEYS, AT PAGE 53.

- LEGEND**
- 2" PVC STREET LIGHT CONDUIT
 - 1-1/4" PVC STREET LIGHT CONDUIT
 - W/ (2) #4 & (1) #8 GROUND THW
 - STOP SIGN (30" R1-1)
 - STREET LIGHT (250W HPS)
 - STREET LIGHT (200W HPS)
 - STREET LIGHT (100W HPS)
 - NO. 3-1/2 PULLBOX
 - STREET NAME SIGN (9" D-3)
 - FIRE HYDRANT
 - R7-1a NO PARKING SIGNS
 - SERVICE POINT
 - SIGHT VISIBILITY RESTRICTION EASEMENT



1074773