

Call before you dig  
1-800-227-2600

Call before you Overhead  
1-702-227-2929  
NEVADA POWER SUPERVISOR AND SAFETY SERVICES DEPARTMENT

**SEWER CONSTRUCTION NOTES**

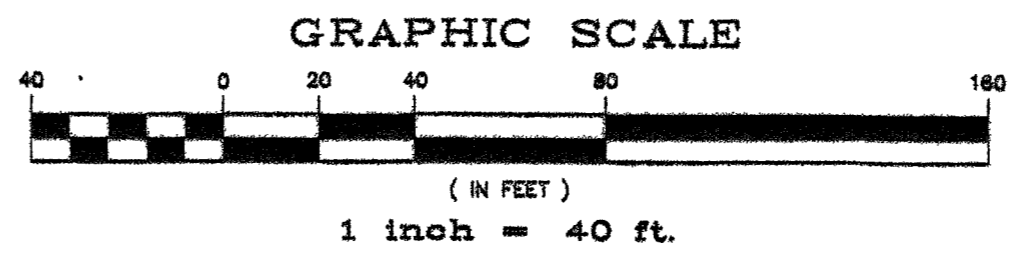
- INSTALL 8" SANITARY SEWER LINE PER CONSTRUCTION STANDARDS WASTEWATER COLLECTION SYSTEMS AND TRENCH PER DWG. NO. SD-18A.
- CONSTRUCT STANDARD ECCENTRIC MANHOLES PER C.S.W.C.S. DWG. NO. SD-1.

**GENERAL NOTES**

- ALL STATIONING IS CENTERLINE STATIONING UNLESS OTHERWISE NOTED.
- SEWER LENGTHS ARE FROM CENTER OF MANHOLE TO CENTER OF MANHOLE.
- ADD 2300 TO ALL PLAN ELEVATIONS.

**SEWAGE CONTRIBUTION**

0.085 MGD AVERAGE FLOW  
0.1593 MGD PEAK FLOW



**THE BASIS OF BEARINGS FOR THIS PROJECT**  
IS GRID NORTH AS DEFINED BY THE NEVADA COORDINATE SYSTEM OF 1983 (NODS3), EAST ZONE, (2701), DETERMINED BY GIS CONTROL POINTS '804' AND '87' AS SHOWN ON A RECORD OF SURVEY ON FILE IN THE CLARK COUNTY RECORDER'S OFFICE, IN FILE 88 OF SURVEYS, AT PAGE 53.

**BENCHMARK**  
CITY OF LAS VEGAS BENCHMARK NO. 8LVD0 7N4 - RIVET AND PLATE IN TOP OF CURB SOUTHEAST CORNER OF ALEXANDER ROAD AND GRAND CANYON DRIVE.  
ELEVATION (NAVD 88) = 752.858 METERS  
2801.24 FEET

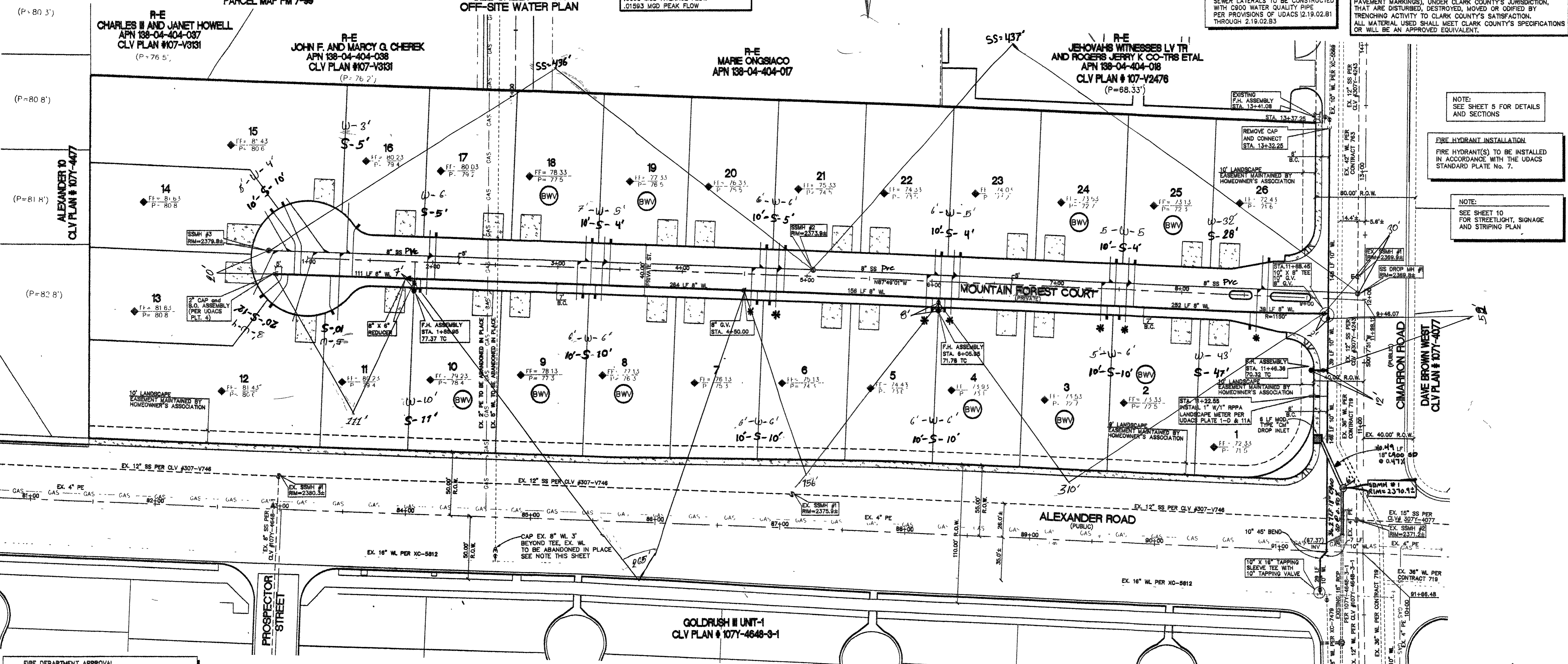
**NOTE:**  
SEWER LATERALS TO BE CONSTRUCTED WITH C900 WATER QUALITY PIPE PER PROVISIONS OF UDACS 12.19.02.B1 THROUGH 2.19.02.B3

**NOTE:**  
REPLACE ALL TRAFFIC CONTROL DEVICES (SIGNS OR PAVEMENT MARKINGS), UNDER CLARK COUNTY'S JURISDICTION, THAT ARE DISTURBED, DESTROYED, MOVED OR OBTAINED BY TRENCHING ACTIVITY TO CLARK COUNTY'S SATISFACTION. ALL MATERIAL USED SHALL MEET CLARK COUNTY'S SPECIFICATIONS OR WILL BE AN APPROVED EQUIVALENT.

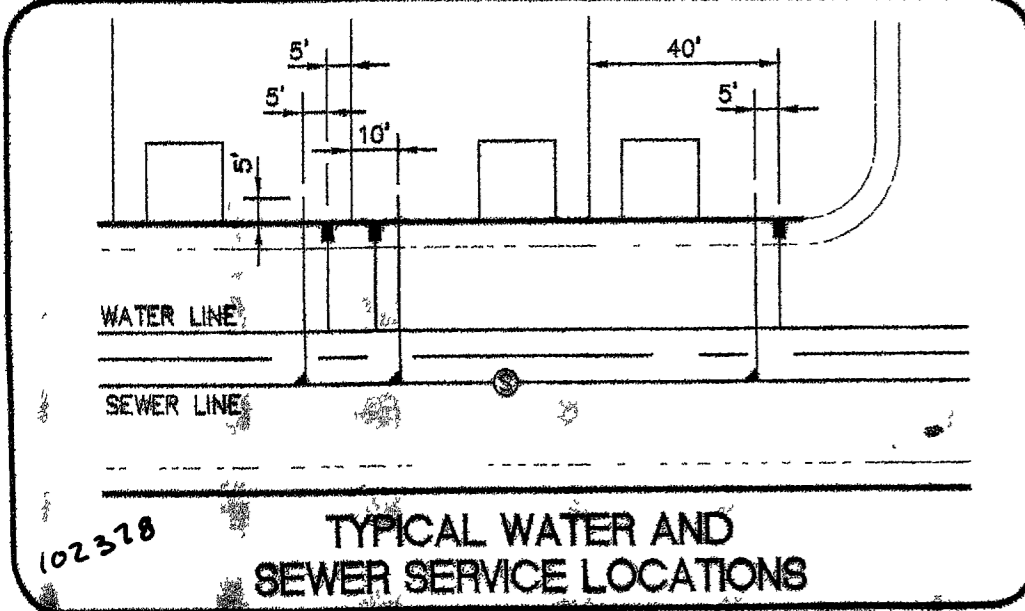
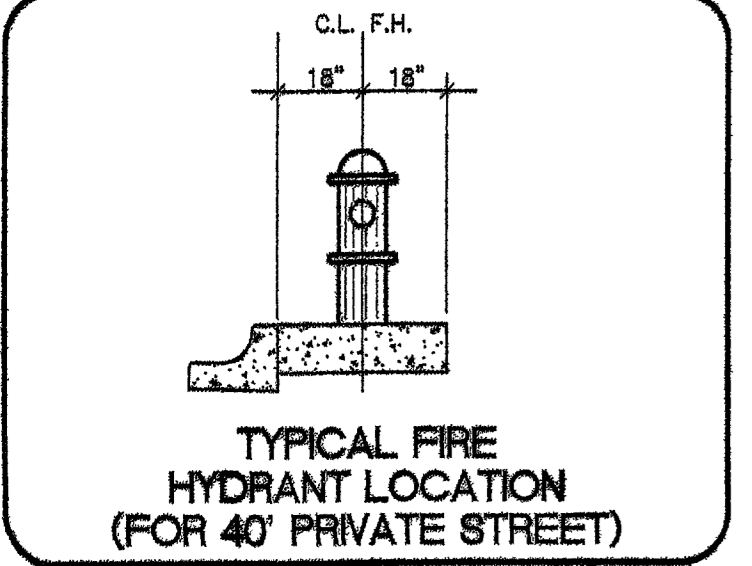
**NOTE:**  
SEE SHEET 5 FOR DETAILS AND SECTIONS

**FIRE HYDRANT INSTALLATION**  
FIRE HYDRANT(S) TO BE INSTALLED IN ACCORDANCE WITH THE UDACS STANDARD PLATE No. 7.

**NOTE:**  
SEE SHEET 10 FOR STREETLIGHT, SIGNAGE AND STRIPING PLAN



**FIRE DEPARTMENT APPROVAL**  
APPROVAL BY THE FIRE DEPARTMENT HAVING JURISDICTION IS REQUIRED PRIOR TO OBTAINING FINAL APPROVAL FROM THE LVVWD.



**DISCLAIMER NOTE**  
UTILITY LOCATIONS SHOWN HEREON ARE APPROXIMATE ONLY. IT SHALL BE THE CONTRACTOR'S RESPONSIBILITY TO DETERMINE THE EXACT LOCATION OF ALL EXISTING UNDERGROUND AND OVERHEAD UTILITIES PRIOR TO COMMENCING CONSTRUCTION. NO REPRESENTATION IS MADE THAT ALL EXISTING UTILITIES ARE SHOWN HEREON. THE ENGINEER ASSUMES NO RESPONSIBILITY FOR UTILITIES NOT SHOWN IN THEIR PROPER LOCATION.

**ESTIMATED QUANTITIES**

ITEM	QUANTITY
1. 8" WATERLINE	134 LF
2. 8" WATERLINE	1,584 LF
3. 10" WATERLINE	367 LF
4. 3/4" METER PER UDACS PLATE 1-B	22 EA
5. 6" F.H. ASSEMBLY (INCLUDES 8" Tee AND 8" G.V. PER UDACS PLATE 7)	2 EA
6. 6" F.H. ASSEMBLY (INCLUDES 10" Tee AND 8" G.V. PER UDACS PLATE 7)	1 EA
7. 2" BLOW-OFF ASSEMBLY PER UDACS PLATE 4A	3 EA
8. 8" GATE VALVE	5 EA
9. 10" GATE VALVE	2 EA
10. 8" X 8" MECH. JOINT TAPPING SLEEVE WITH 8" TAPPING VALVE	1 EA
11. 10" X 10" X 8" Tee	1 EA
12. 8" Tee	1 EA
13. 80° BEND	2 EA
14. 8" X 6" REDUCER	1 EA
15. 3/4" METER PER UDACS PLATE 1-D (LOTS 12-15)	4 EA
16. 10" X 16" TAPPING SLEEVE WITH 10" TAPPING VALVE	1 EA
<b>SANITARY SEWER</b>	
<b>ITEM</b>	<b>QUANTITY</b>
1. 8" SEWER LINE (PUBLIC)	880 LF
2. 4" SEWER LATERAL (PUBLIC)	28 EA
3. 48" MANHOLES (PUBLIC)	4 EA

**NOTE:**  
QUANTITIES SHOWN ARE APPROXIMATIONS ONLY. THE CONTRACTOR SHALL BE RESPONSIBLE FOR CALCULATING THE EXACT QUANTITIES

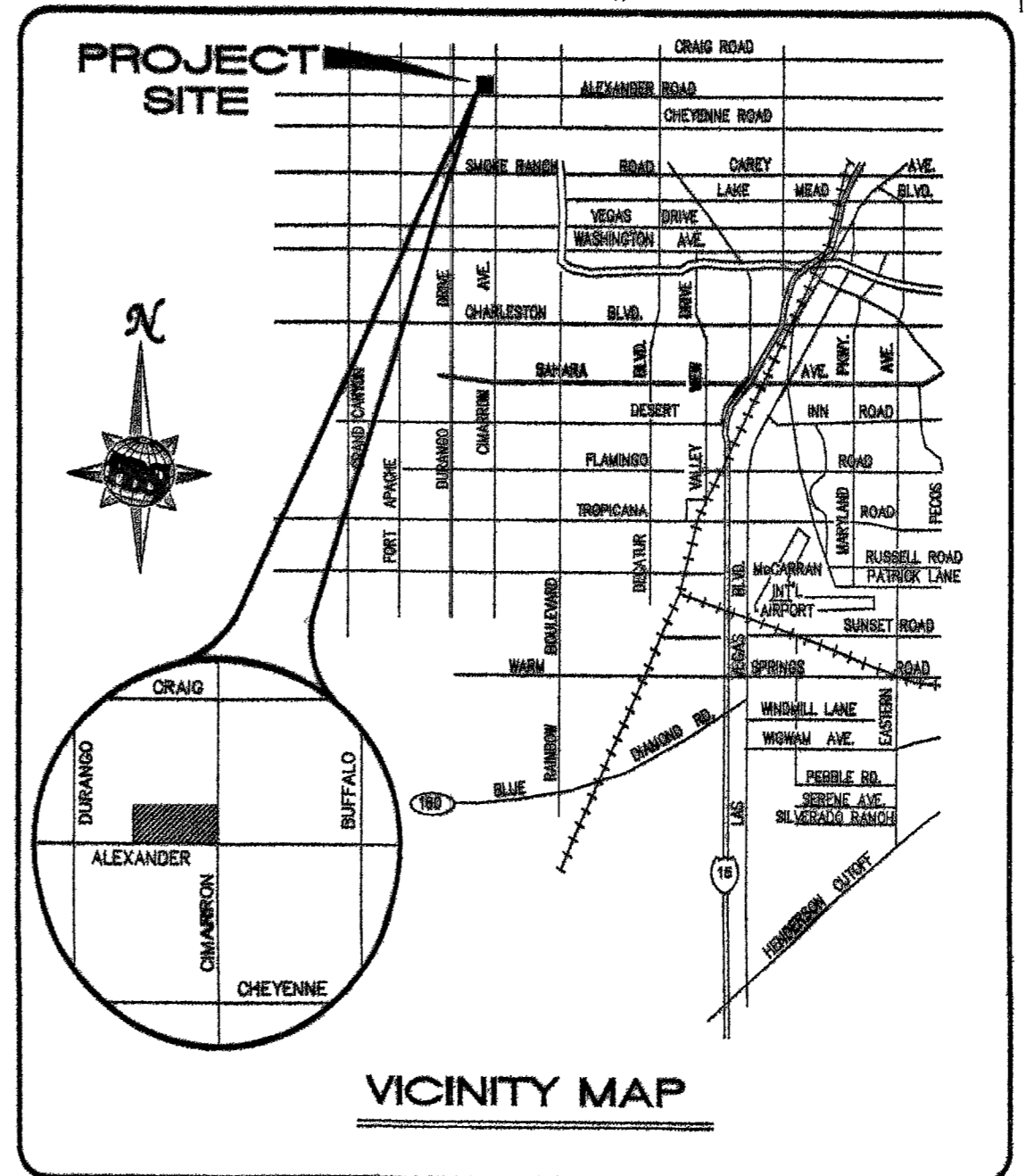
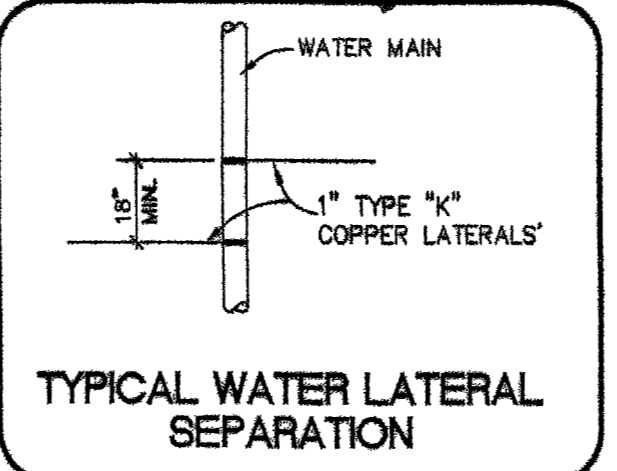
**REDUCED PRESSURE PRINCIPLE ASSEMBLY (1) T**  
APPROVED REDUCED PRESSURE PRINCIPLE ASSEMBLY(S) SHALL BE INSTALLED PER UDACS PLATE NO. 11A. NO WATER SHALL BE TAKEN FROM A SERVICE REQUIRING BACKFLOW PREVENTION UNTIL THE REDUCED PRESSURE PRINCIPLE ASSEMBLY HAS BEEN SUCCESSFULLY TESTED BY THE LVVWD.  
ANY BLOCK WALL OR OTHER FENCE MATERIAL SHALL BE DESIGNED AND CONSTRUCTED AROUND THE OUTSIDE OF THE EASEMENT(S) TO ALLOW THE DISTRICT DIRECT ACCESS FROM THE ADJACENT RIGHT-OF-WAY.  
EASEMENTS SHALL BE CLEARLY MARKED OR STAKED PRIOR TO THE START OF CONSTRUCTION.

**LEGEND**

	FIRE HYDRANT
	SANITARY SEWER MANHOLE
	GATE VALVE
	PROPOSED SEWER LINE OF SIZE AS INDICATED.
	PROPOSED WATER LINE OF SIZE AS INDICATED.
	PROPOSED SEWER LATERAL
	PROPOSED WATER LATERAL
	LOT NUMBER
	REDUCER
	8" TEE
	END CAP W/2" BLOW-OFF
	BACK WATER VALVE

**NOTE:**  
ALL ON-SITE PRIVATE DRIVES AND PRIVATE STREETS ARE C.L.V. SEWER EASEMENTS. PUBLIC UTILITY EASEMENTS AND PUBLIC DRAINAGE EASEMENTS TO BE PRIVATELY MAINTAINED.

**ABANDONED VALVE CUT AND CAP**  
ALL VALVES TO BE ABANDONED SHALL BE ABANDONED IN THE CLOSED POSITION, UNLESS SHOWN OTHERWISE, BY REMOVING A MINIMUM OF THE TOP TWENTY-FOUR (24) INCHES OF THE VALVE BOX AND THEN FILLING THE BOTTOM OF THE BOX WITH MINIMUM OF EIGHT (8) INCHES OF SAND OR TYPE II AGGREGATE BASE, THE REMAINING PORTION OF THE VALVE BOX SHALL BE FILLED WITH CONCRETE HAVING A COMPRESSIVE STRENGTH OF AT LEAST TWO THOUSAND (2,000) PSI. THE LATERAL MUST BE CUT WITHIN THREE (3) FEET OF THE ABANDONED VALVE, OR AS SHOWN ON PLANS AND CAPPED. THE CONTRACTOR SHALL CUT THE EXISTING PIPE WHERE SHOWN ON THE DRAWING, AND INSTALL A CAP COMPLETE WITH THRUST BLOCK, WHERE A JOINT OR COUPLING IN THE EXISTING PIPE IS UNCOVERED AT THE CUT AND CAP LOCATIONS. THE INSTALLATION OF A PLUG MAY BE PERMITTED WITH DISTRICT APPROVAL. A CONCRETE THRUST BLOCK SHALL BE INSTALLED AT ALL CAP OR PLUG LOCATIONS, IN ACCORDANCE WITH THE PROVISIONS OF UDACS PLATE 5.



DRIVEWAY LOCATIONS SHOWN ARE GRAPHIC REPRESENTATIONS ONLY. DIMENSIONS AND LOCATIONS SHALL BE VERIFIED BY THE CONTRACTOR PRIOR TO CONSTRUCTION.

**FIRE FLOW CALCULATIONS**

THE FIRE FLOW REQUIREMENT IS 1500 GALLONS PER MINUTE AT 20 PSI RESIDUAL PRESSURE.

**BASED ON:**

- SQUARE FOOTAGE: 3500 SQUARE FEET
- LARGEST AREA BETWEEN 4-HOUR AREA SEPARATION WALLS: N/A SQUARE FEET
- BUILDING HEIGHT: 23 FEET
- NUMBER OF STORIES: 2 FLOORS
- TYPE OF CONSTRUCTION: V-N
- OCCUPANCY: RESIDENTIAL
- FULL AUTOMATIC FIRE SPRINKLER SYSTEM: N/A

RECEIVED BY: [Signature]  
DATE: 11/20/03

APPROVED FOR CONSTRUCTION  
[Signature]  
LAS VEGAS VALLEY WATER DISTRICT (PROJECT# 28061)

REVISION

TROPHY HOMES

UTILITY PLAN

TIMBER RIDGE II

SEPT. 2003

SEPT. 2003

AUG. 2003

SCALE: 1"=40'

DRAWN BY: DUE

DESIGNED BY: DUE

CHECKED BY: CAL

PROJECT NO: 015845

SCALE: 1"=40'

SEAL

COREY LIBBEY  
REGISTERED PROFESSIONAL ENGINEER-STATE OF NEVADA  
NO. 015875

SHEET

3 OF 10 SHEETS

DRAWING NO. 1074793

1074793

1546-1030