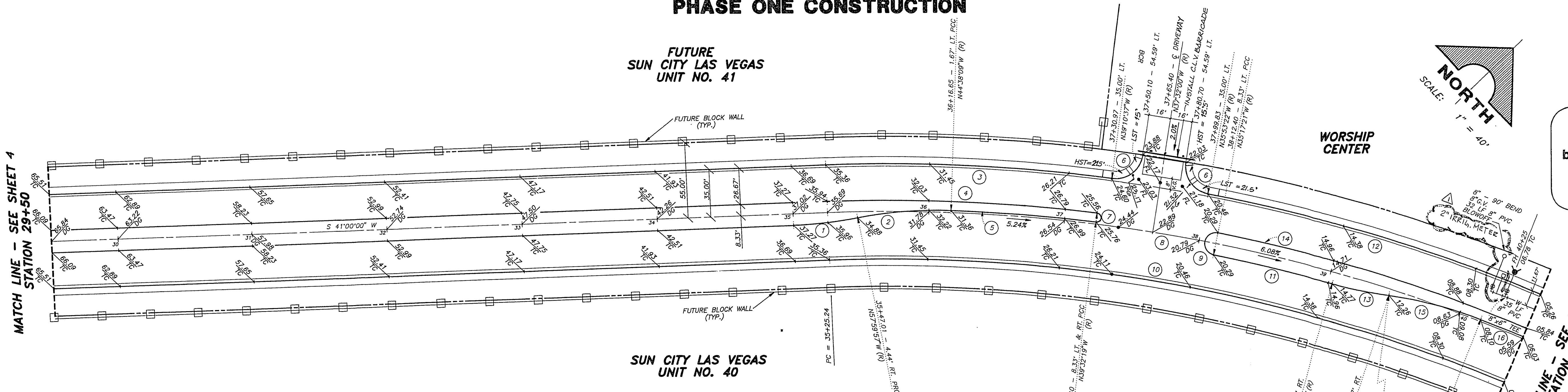


PROFILE  
SCALE: HORIZ. 1" = 40'  
VERT. 1" = 4'

**PHASE ONE CONSTRUCTION**

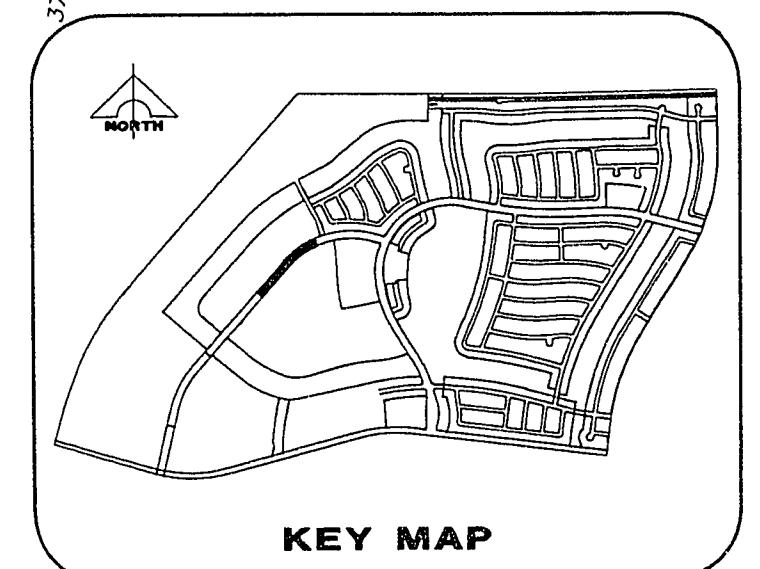
FUTURE  
SUN CITY LAS VEGAS  
UNIT NO. 41



**NOTE**  
HST - HIGHSIDE TRANSITION  
LST - LOWSIDE TRANSITION

**CURVE TABLE**

CURVE	DELTA	RADIUS	LENGTH	TANGENT
1	08°59'57"	300.00'	47.12'	23.61'
2	13°21'48"	300.00'	69.97'	35.14'
3	08°49'23"	1235.00'	211.73'	106.13'
4	09°27'41"	1208.33'	199.53'	99.99'
5	05°05'50"	1201.67'	106.80'	53.49'
6	88°21'22"	20.00'	30.84'	19.43'
7	180°00'00"	3.33'	10.45'	---
8	73°01'05"	1200.00'	1529.29'	888.25'
9	180°00'00"	8.33'	26.17'	---
10	27°28'27"	1185.00'	579.96'	284.44'
11	04°02'21"	1191.67'	80.25'	45.15'
12	15°05'14"	1235.00'	325.20'	163.55'
13	08°07'02"	300.00'	42.50'	21.29'
14	14°29'55"	1208.33'	305.77'	153.70'
15	13°30'31"	300.00'	70.73'	35.53'
16	04°46'05"	1201.67'	100.00'	50.02'



APPROVED FOR CONSTRUCTION  
*James R. Taylor*  
LAS VEGAS VALLEY WATER DISTRICT DATE

RECORDS: MICHAEL D. WALLACE, INC. ENGINEER - STATE OF NEVADA  
NO. 8218  
P.L.E. NO. DATE  
G.C. WALLACE, INC. Engineering/Architecture  
1855 SOUTH RAINBOW BLVD., LAS VEGAS, NEVADA 89102  
DEL WEBB COMMUNITIES, INC.  
SUN CITY LAS VEGAS  
THOMAS W. RYAN BLVD. - PHASE I  
STA. 29+50 TO STA. 40+50  
SHEET 5 OF 10 SHEETS

JOB NO. 701.127  
PLOTTED: 04/15/21 07:22 am DRAWING: C:\V\W\701-127-B.dwg

10-2-13 107-V2119