

Avoid cutting underground utility lines. If costly.

Call before you Dig
1-800-227-2600

Call before you Overhead
1-702-593-6111

SEWER CONSTRUCTION NOTES

- ◆ INSTALL 8" SEWER MAIN TRENCH SECTION BACKFILL PER D. C. S. V. C. S. NL SD-16
- ◆ INSTALL 48" SANITARY SEWER MANHOLE PER DESIGN AND CONSTRUCTION STANDARDS FOR WASTEWATER COLLECTION SYSTEMS PLATE SD-1
- ◆ REMOVE CAP & CONNECT TO EX. 8" STUB
- ◆ INSTALL 4" SEWER LATERAL W/ 4" WYE. LOCATION PER TYPICAL LOT DETAIL "A" ON SHEET D2 UNLESS NOTED OTHERWISE
- ◆ INSTALL 8" CAP
- ◆ INSTALL 4" SEWER LATERAL W/ 4" WYE. LOCATION PER TYPICAL LOT DETAIL "B" ON SHEET D2 UNLESS NOTED OTHERWISE
- ⊖ BACK WATER VALVE

BENCHMARK

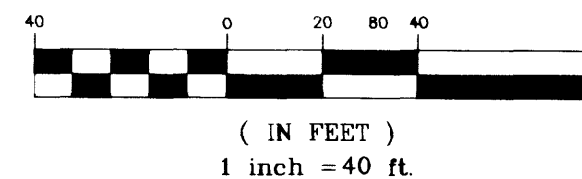
ELEVATION = 2508.91 FEET (NAVD 88)
CITY OF LAS VEGAS B.M. #11V9# 16N#6
A U.S. COAST AND GEODETIC SURVEY B.M. #U169, LOCATED NEAR THE CENTER OF THE NW 1/4 OF SECTION 16, TOWNSHIP 19 SOUTH, RANGE 60 EAST, M.D.M., CLARK COUNTY, NEVADA.

BASIS OF BEARING

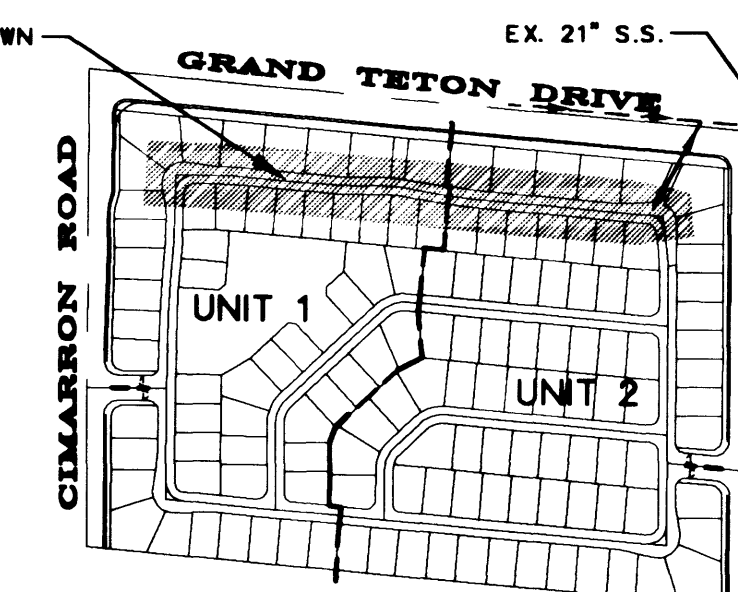
NORTH 84°50'22" WEST, BEING THE BEARING OF THE NORTH LINE OF THE NORTHEAST QUARTER (NE 1/4) OF SECTION 16, TOWNSHIP 19 SOUTH, RANGE 60 EAST, M.D.M., CLARK COUNTY NEVADA, AS SHOWN IN FILE 93 OF SURVEYS, PAGE 13, OFFICIAL RECORDS OF CLARK COUNTY, NEVADA.



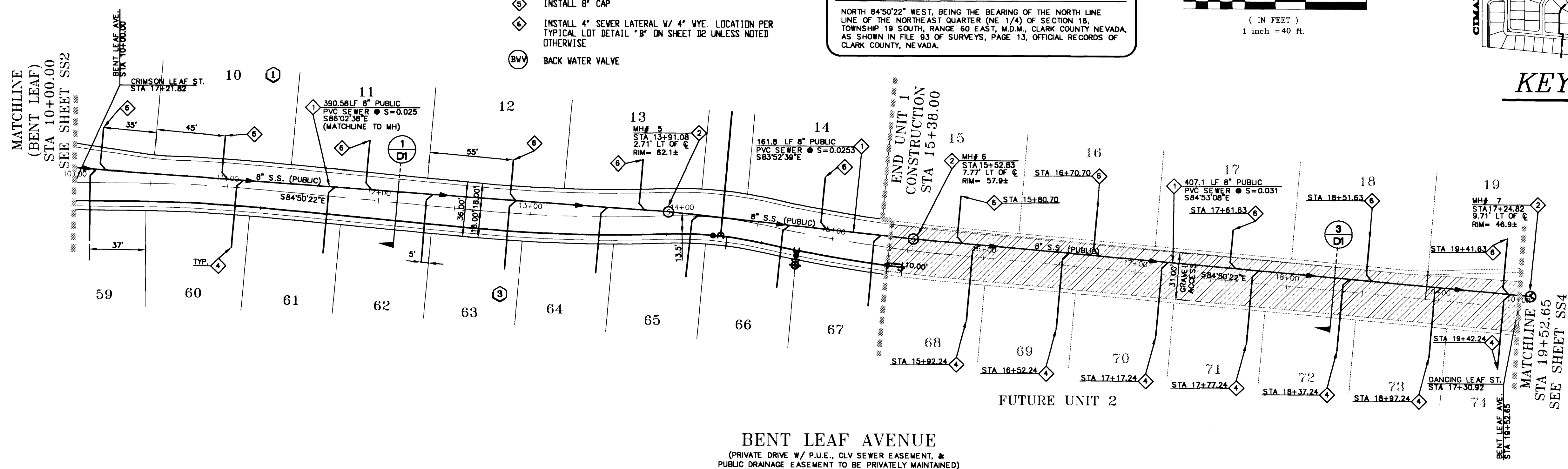
GRAPHIC SCALE



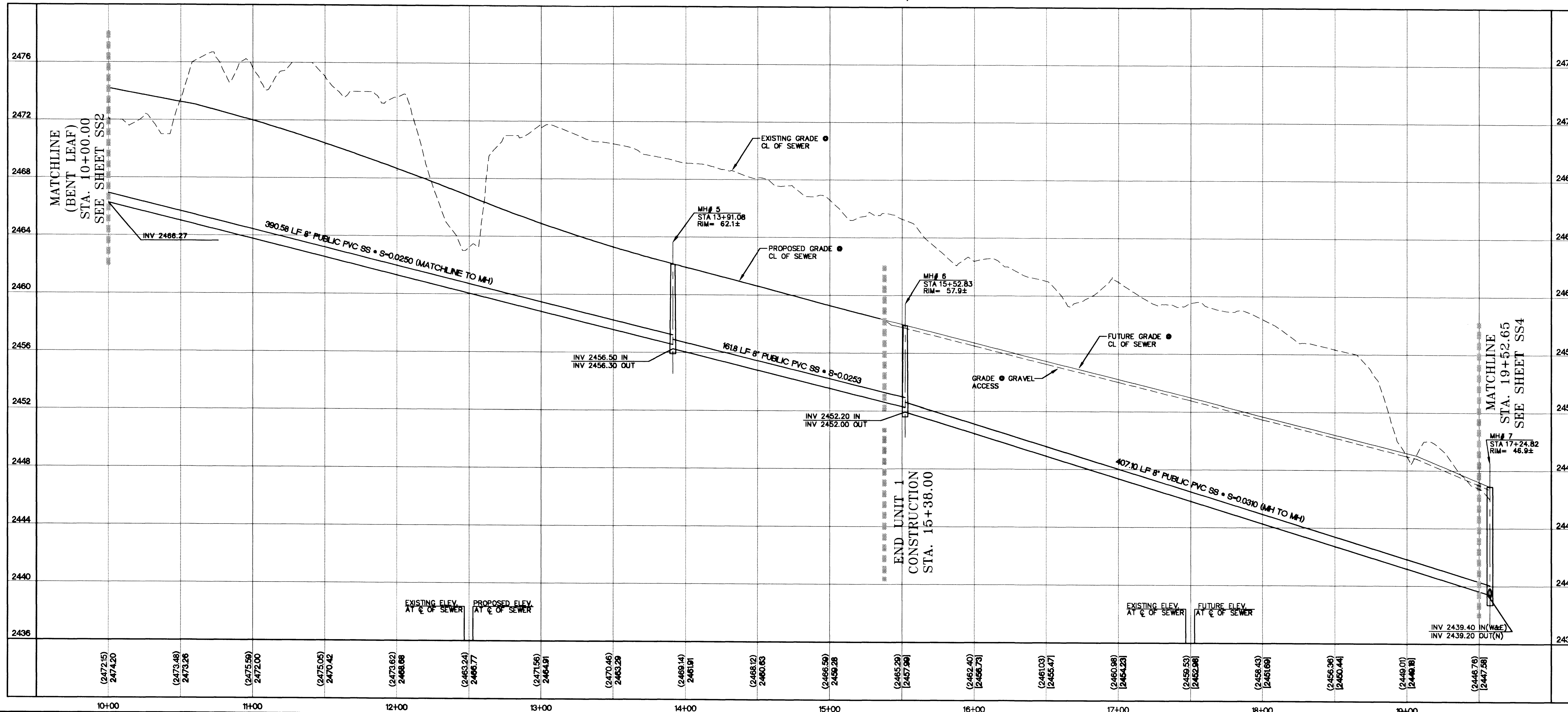
SHADED AREA SHOWN ON THIS SHEET



KEY MAP



BENT LEAF AVENUE
(PRIVATE DRIVE W/ P.U.E., CLV SEWER EASEMENT, & PUBLIC DRAINAGE EASEMENT TO BE PRIVATELY MAINTAINED)



DESIGNED BY:	CBL/CA
DRAWN BY:	RS/OS
CHECKED BY:	MV
PROJECT DATE:	08/99
NO.	REVISION
1	AS SHOWN
2	AS SHOWN
3	AS SHOWN
4	AS SHOWN
5	AS SHOWN
6	AS SHOWN
7	AS SHOWN
8	AS SHOWN
9	AS SHOWN
10	AS SHOWN
11	AS SHOWN
12	AS SHOWN
13	AS SHOWN
14	AS SHOWN
15	AS SHOWN
16	AS SHOWN
17	AS SHOWN
18	AS SHOWN
19	AS SHOWN
20	AS SHOWN
21	AS SHOWN
22	AS SHOWN
23	AS SHOWN
24	AS SHOWN
25	AS SHOWN
26	AS SHOWN
27	AS SHOWN
28	AS SHOWN
29	AS SHOWN
30	AS SHOWN
31	AS SHOWN
32	AS SHOWN
33	AS SHOWN
34	AS SHOWN
35	AS SHOWN
36	AS SHOWN
37	AS SHOWN
38	AS SHOWN
39	AS SHOWN
40	AS SHOWN
41	AS SHOWN
42	AS SHOWN
43	AS SHOWN
44	AS SHOWN
45	AS SHOWN
46	AS SHOWN
47	AS SHOWN
48	AS SHOWN
49	AS SHOWN
50	AS SHOWN
51	AS SHOWN
52	AS SHOWN
53	AS SHOWN
54	AS SHOWN
55	AS SHOWN
56	AS SHOWN
57	AS SHOWN
58	AS SHOWN
59	AS SHOWN
60	AS SHOWN
61	AS SHOWN
62	AS SHOWN
63	AS SHOWN
64	AS SHOWN
65	AS SHOWN
66	AS SHOWN
67	AS SHOWN
68	AS SHOWN
69	AS SHOWN
70	AS SHOWN
71	AS SHOWN
72	AS SHOWN
73	AS SHOWN
74	AS SHOWN
75	AS SHOWN
76	AS SHOWN
77	AS SHOWN
78	AS SHOWN
79	AS SHOWN
80	AS SHOWN
81	AS SHOWN
82	AS SHOWN
83	AS SHOWN
84	AS SHOWN
85	AS SHOWN
86	AS SHOWN
87	AS SHOWN
88	AS SHOWN
89	AS SHOWN
90	AS SHOWN
91	AS SHOWN
92	AS SHOWN
93	AS SHOWN
94	AS SHOWN
95	AS SHOWN
96	AS SHOWN
97	AS SHOWN
98	AS SHOWN
99	AS SHOWN
100	AS SHOWN

THE WILLOWS - UNIT 1
CITY OF LAS VEGAS @ ELKHORN SPRINGS

**SANITARY SEWER
PLAN AND PROFILE**
BENT LEAF AVENUE
STA. 10+00.00 - 19+52.65

DEVELOPER

DISTINCTIVE HOMES

SEAL

ENGINEER - STATE OF NEVADA
M. J. VALENTI
No. 12631

6280 S. Valley View Blvd
Suite 200
Las Vegas, NV 89118
Tel: (702) 368-3008
Fax: (702) 368-0047

CVL CONSULTANTS, INC.
ENGINEERING · PLANNING · LAND SURVEYING

SHEET
SS1
8 OF 15

AGENCY DWG. NO.
3079-4641-1