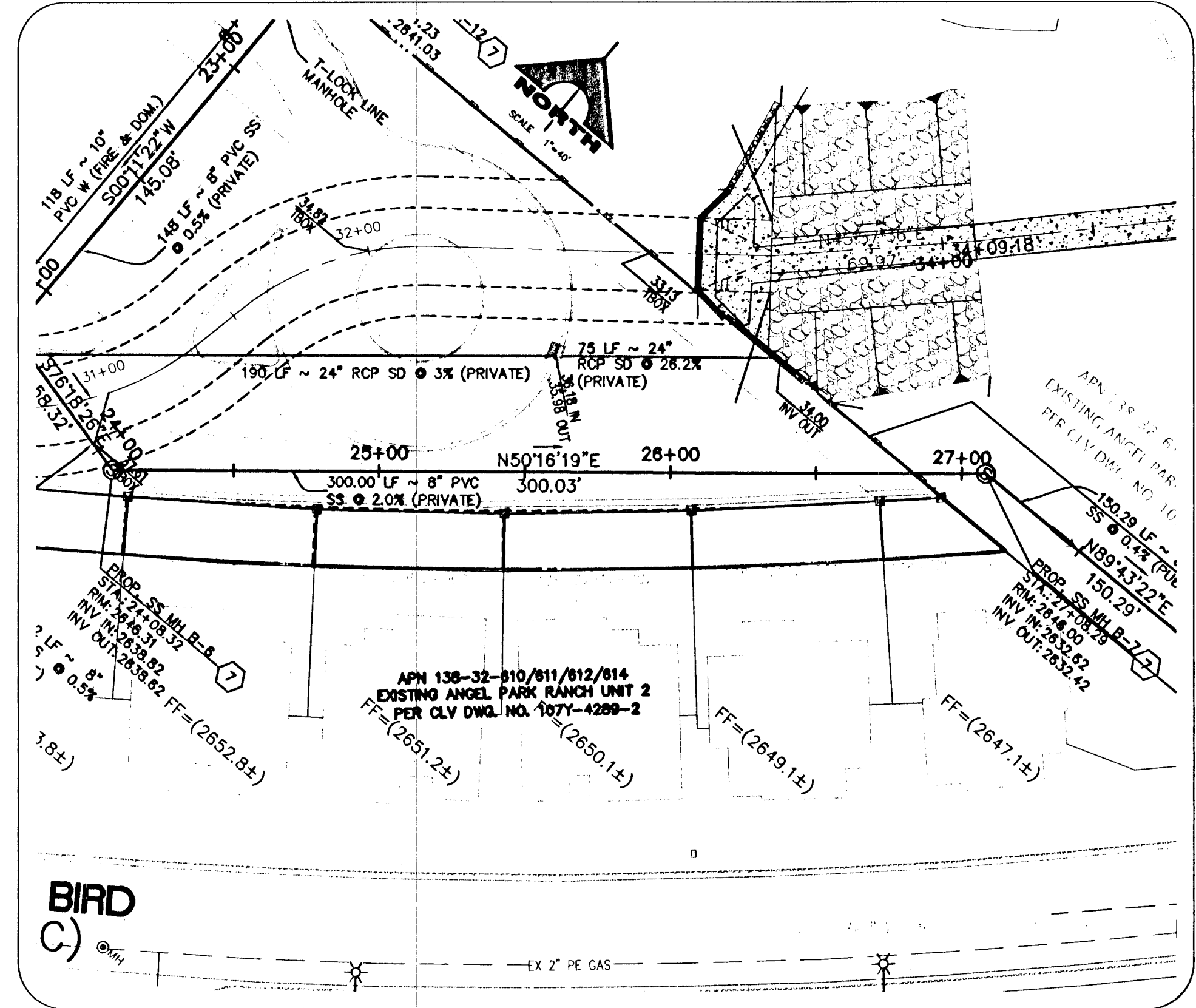
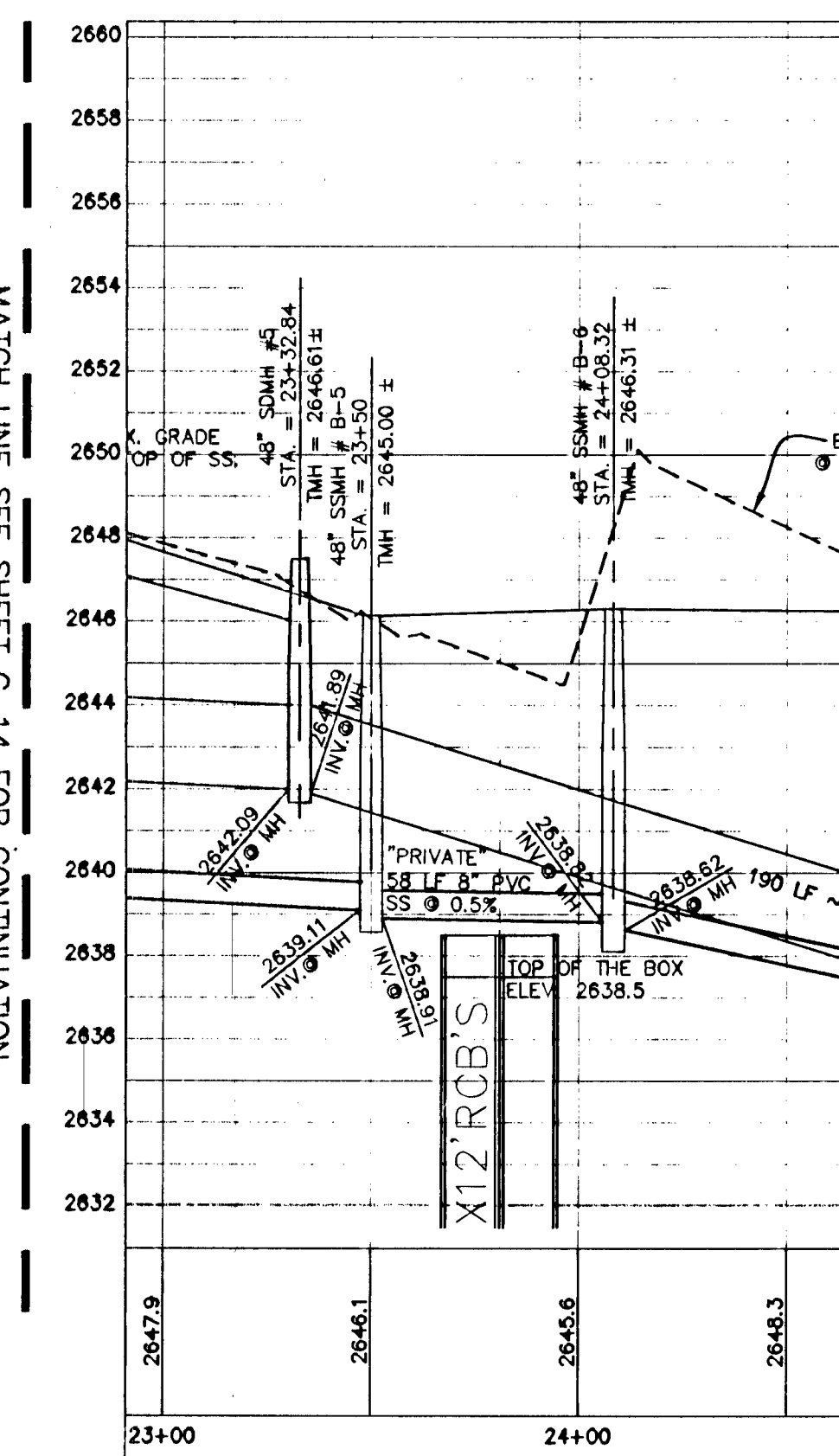


**PLAN & PROFILE**

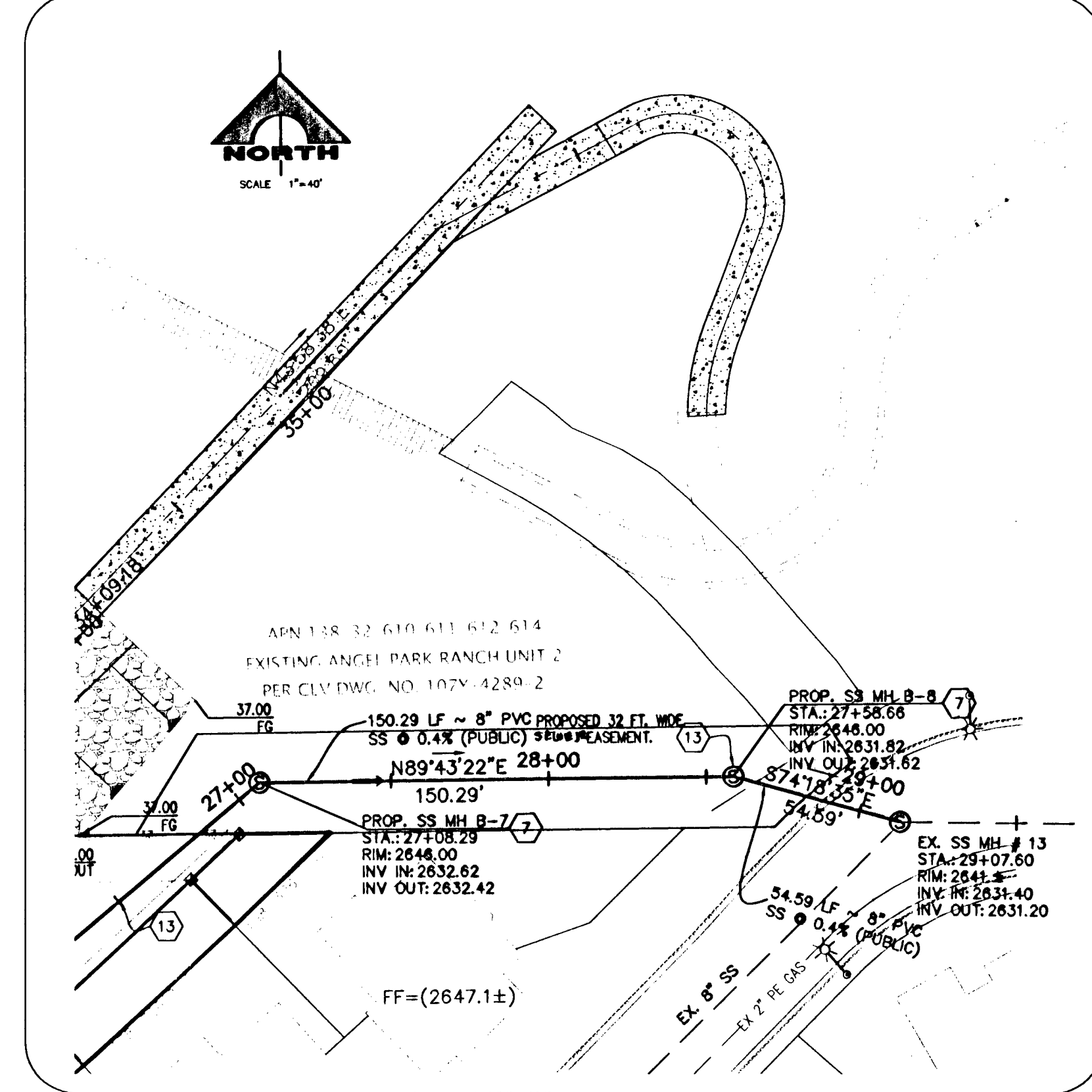
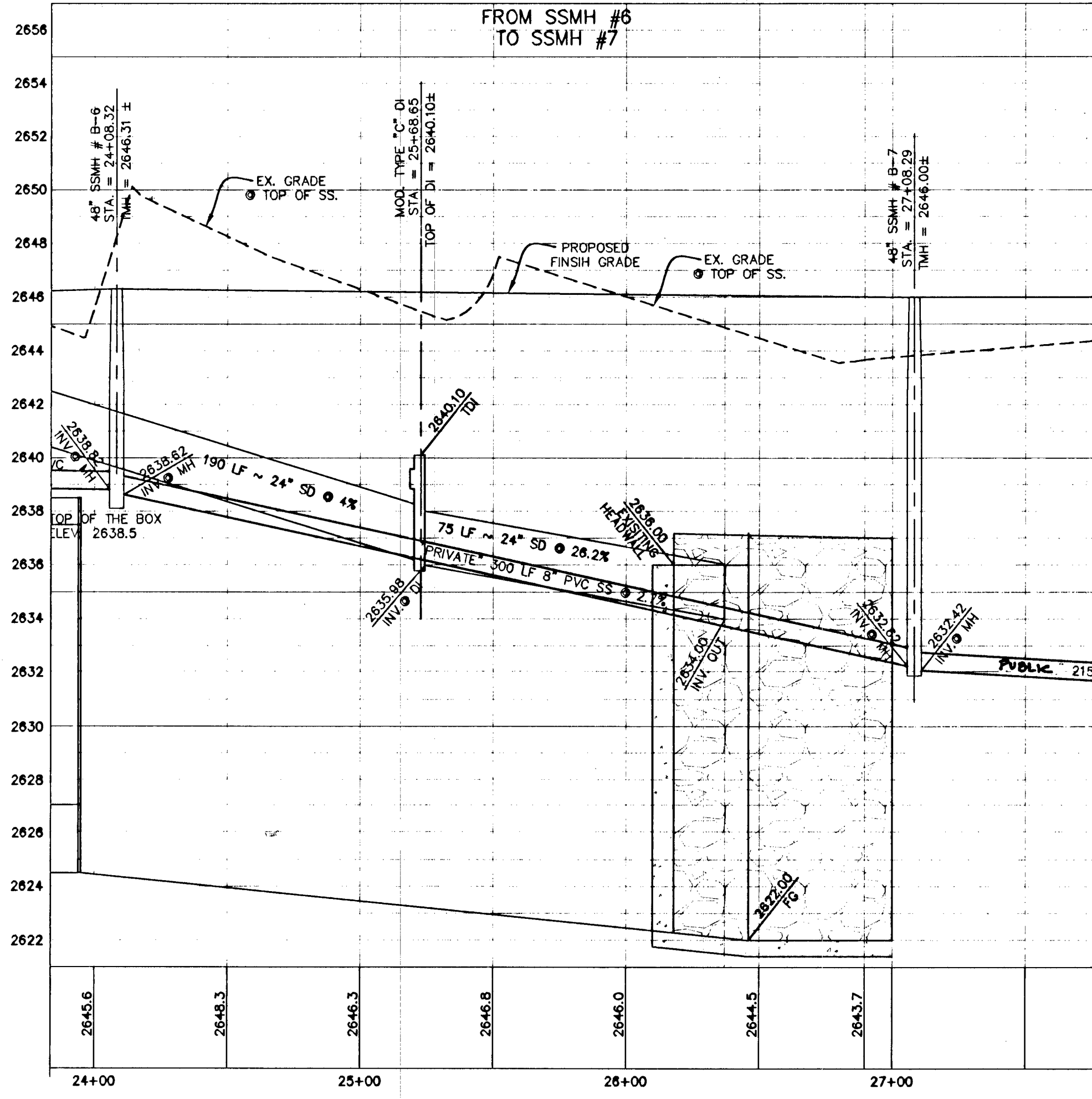
HOR. : 1" = 40'  
VERT. : 1" = 4'  
FROM SSMH #5  
TO SSMH #6

MATCH LINE SEE SHEET C-14 FOR CONTINUATION



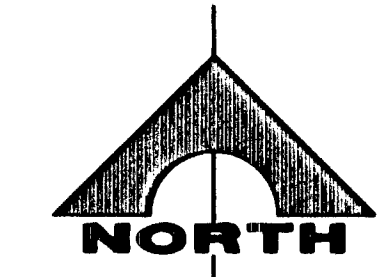
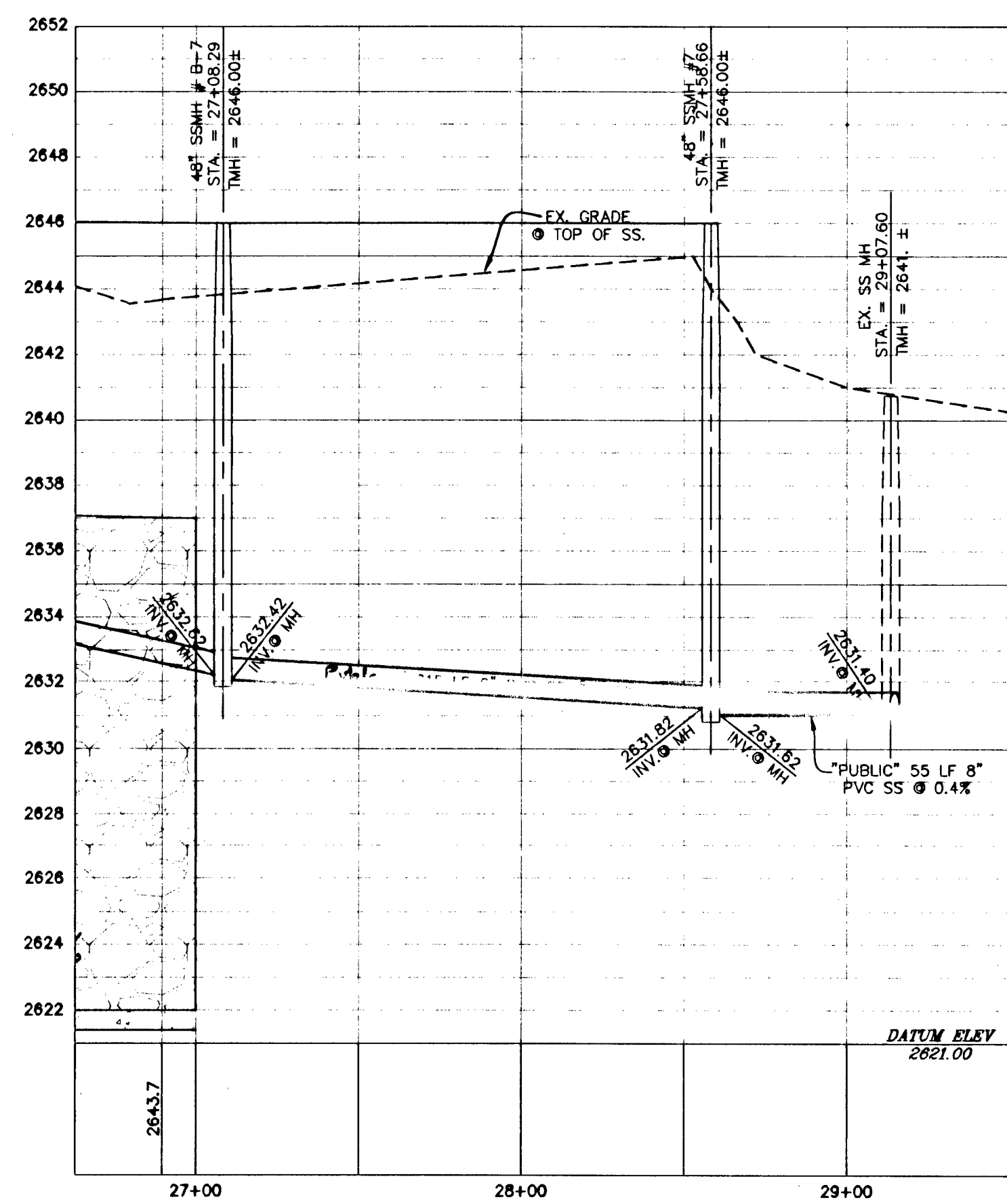
**PLAN & PROFILE**

HOR. : 1" = 40'  
VERT. : 1" = 4'  
FROM SSMH #6  
TO SSMH #7

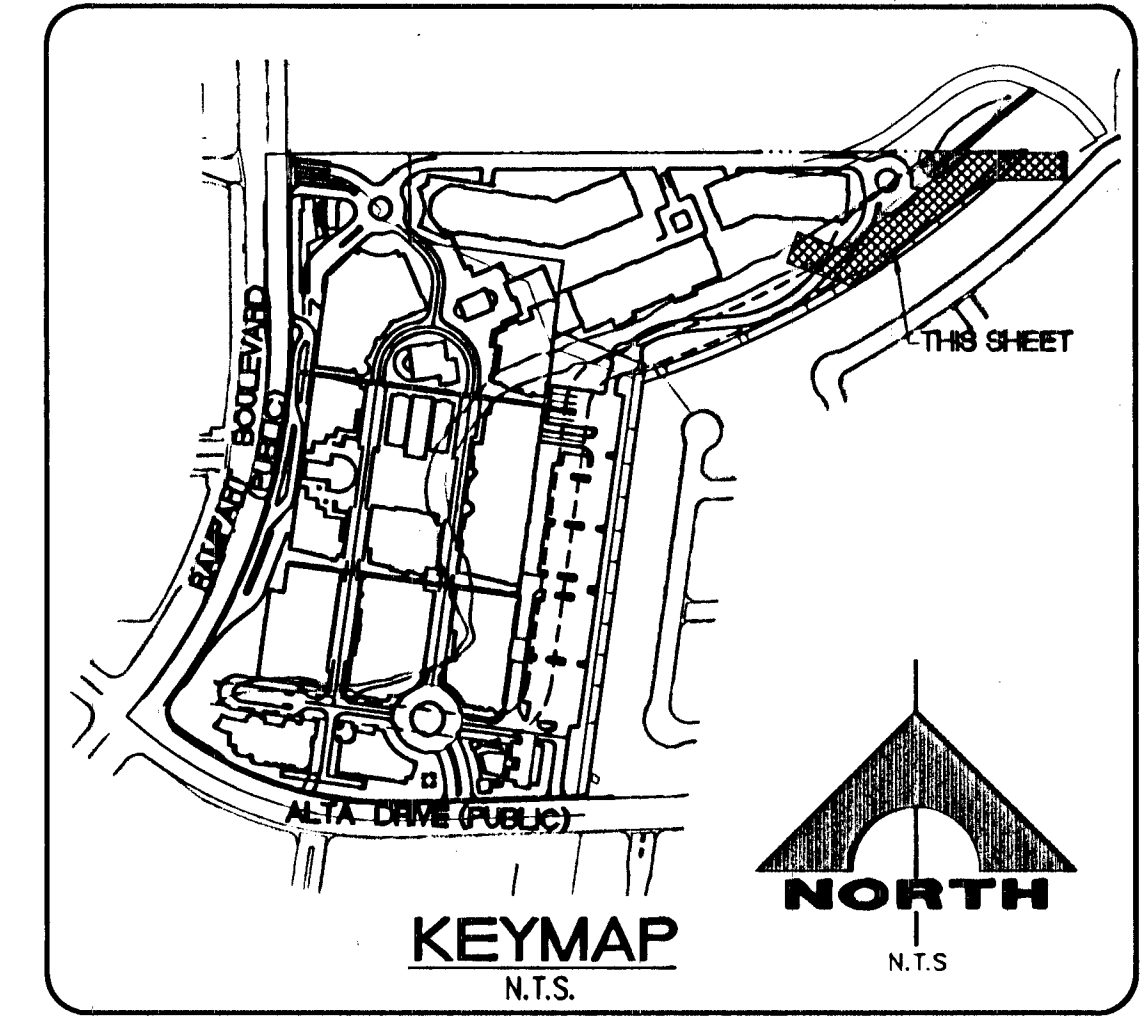


**PLAN & PROFILE**

HOR. : 1" = 40'  
VERT. : 1" = 4'  
FROM SSMH #7  
TO EX. SSMH #13



SCALE 1"=40'  
0 40 80  
SCALE FEET

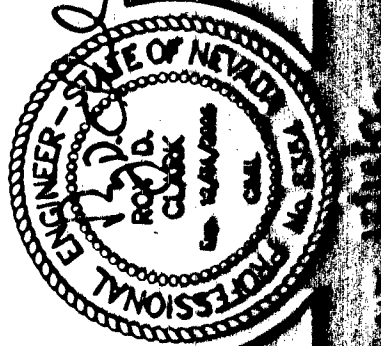


**BASIS OF BEARING**

SOUTH 00°32'07" EAST, BEING THE BEARING OF THE CENTERLINE OF "RAMPART BOULEVARD" AS SHOWN BY MAP THEREOF ON FILE IN FILE 64, PAGE 93 OF SURVEYS IN THE COUNTY RECORDER'S OFFICE, CLARK COUNTY, NEVADA, LYING WITHIN THE NORTH HALF (N 1/2) OF SECTION 32, TOWNSHIP 20 SOUTH, RANGE 60 EAST, M.D.M., CITY OF LAS VEGAS, CLARK COUNTY, NEVADA.

**BENCHMARK**

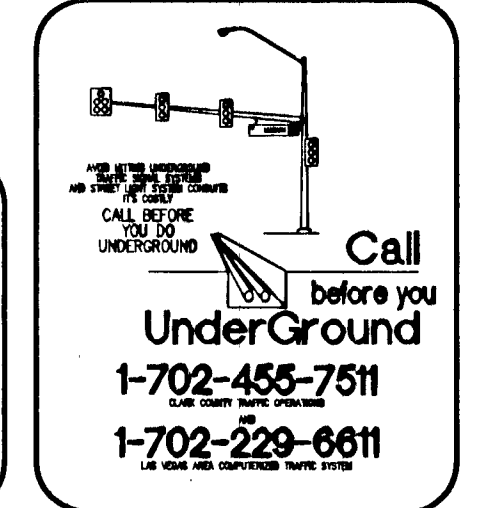
RIVET AND PLATE IN TOP OF CURB @ TOWN CENTER AND VILLAGE CENTER ON WEST EDGE OF ROUNDABOUT.  
CITY OF LAS VEGAS BENCHMARK OL000 3268  
LOCATED ON THE NORTHEAST CORNER OF ALTA DR. AND UPPER HILL.  
NAVO 88 ELEVATION = 814.1281 METERS, 2671.02 FEET  
SUMMERLIN ELEVATION: 2728.11 FEET  
NOTE: ADD 2.27' TO THE CURRENTLY USED SUMMERLIN BENCHMARK TO EQUAL TO THE APPROVED CITY OF LAS VEGAS BENCHMARK.



AS-BUILT DRAWING  
PLAN 1074889-18  
DESIGNED BY: [Name]  
DRAWN BY: [Name]  
CHECKED BY: [Name]  
DATE: [Date]

**G.C. WALLACE, INC.**  
Engineers/Planners/Surveyors  
1074889-18

**THE VILLAGE AT QUEENSBIDGE**  
BUILDING 8  
MOSS & ASSOCIATES OF NEVADA, LTD.  
CONSULTING ENGINEERS AND ARCHITECTS



Avoid cutting underground utility lines. It's costly.  
**Call before you Dig.**  
1-800-227-2600  
UNDERGROUND SERVICE (USA)

1426  
C