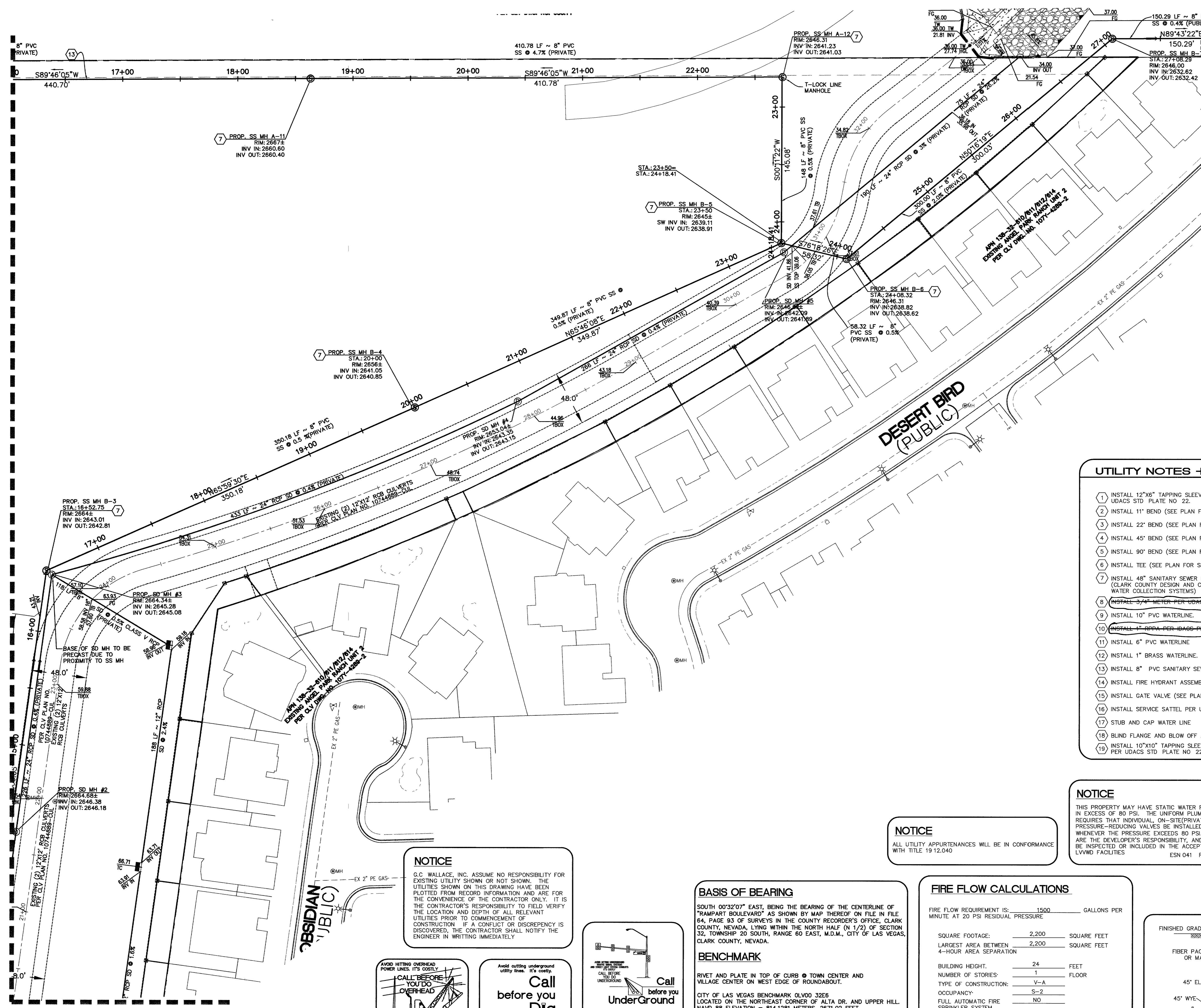


FOR CONTINUATION  
SEE SHEET C-8



UTILITY NOTES + QUANTITIES	UNIT	PUBLIC	PRIVATE
1. INSTALL 12"x6" TAPPING SLEEVE WITH 6" TAPPING VALVE PER UDACS STD. PLATE NO. 22.	EA.		2
2. INSTALL 11" BEND (SEE PLAN FOR SIZE).	EA.		1
3. INSTALL 22" BEND (SEE PLAN FOR SIZE).	EA.		3
4. INSTALL 45" BEND (SEE PLAN FOR SIZE).	EA.		6
5. INSTALL 90" BEND (SEE PLAN FOR SIZE).	EA.		2
6. INSTALL TEE (SEE PLAN FOR SIZE).	EA.		17
7. INSTALL 48" SANITARY SEWER MANHOLE PER STD. DWG. NO. SD-1. (CLARK COUNTY DESIGN AND CONSTRUCTION STANDARDS FOR WASTE WATER COLLECTION SYSTEMS)	EA.		12
8. INSTALL 3/4" METER PER UDACS PLOT NO. 10 - <b>NOT USED</b>	EA.		+
9. INSTALL 10" PVC WATERLINE.	LF.		3601
10. INSTALL 1" RPPA PER UDACS PLOT NO. 11A - <b>NOT USED</b>	EA.		+
11. INSTALL 6" PVC WATERLINE.	LF.		712
12. INSTALL 1" BRASS WATERLINE.	LF.		29
13. INSTALL 8" PVC SANITARY SEWER LINE.	LF.		3338
14. INSTALL FIRE HYDRANT ASSEMBLY.	EA.		10
15. INSTALL GATE VALVE (SEE PLAN FOR SIZE).	EA.		1
16. INSTALL SERVICE SATEL PER UDACS PLATE NO. 1B.	EA.		18
17. STUB AND CAP WATER LINE.	EA.		13
18. BLIND FLANGE AND BLOW OFF ASSEMBLY.	EA.		1
19. INSTALL 10"x10" TAPPING SLEEVE WITH 10" TAPPING VALVE PER UDACS STD. PLATE NO. 22.	EA.		1

**NOTICE**

THIS PROPERTY MAY HAVE STATIC WATER PRESSURE IN EXCESS OF 80 PSI. THE UNIFORM PLUMBING CODE REQUIRES THAT INDIVIDUAL, ON-SITE (PRIVATE), PRESSURE-REDUCING VALVES BE INSTALLED WHENEVER THE PRESSURE EXCEEDS 80 PSI. PRIVS ARE THE DEVELOPER'S RESPONSIBILITY, AND WILL NOT BE INSPECTED OR INCLUDED IN THE ACCEPTANCE OF LVWD FACILITIES  
ESN 041 REV 6/1/04

**REDUCED PRESSURE PRINCIPLE ASSEMBLY**

APPROVED REDUCED PRESSURE PRINCIPLE ASSEMBLY(S) SHALL BE INSTALLED PER THE UDACS STANDARD PLATE 11E. NO WATER SHALL BE TAKEN FROM A SERVICE REQUIRING BACKFLOW PREVENTION UNTIL THE REDUCED PRESSURE PRINCIPLE ASSEMBLY HAS BEEN SUCCESSFULLY TESTED BY THE LVWD. ANY BLOCK WALL OR OTHER FENCE MATERIAL SHALL BE DESIGNED AND CONSTRUCTED AROUND THE OUTSIDE OF THE EASEMENT(S) AS TO ALLOW THE DISTRICT DIRECT ACCESS FROM THE ADJACENT RIGHT-OF-WAY EASEMENTS SHALL BE CLEARLY MARKED OR STAKED PRIOR TO THE START OF CONSTRUCTION.

**NOTICE**

ALL UTILITY APPURTENANCES WILL BE IN CONFORMANCE WITH TITLE 19.12.040

**BASIS OF BEARING**

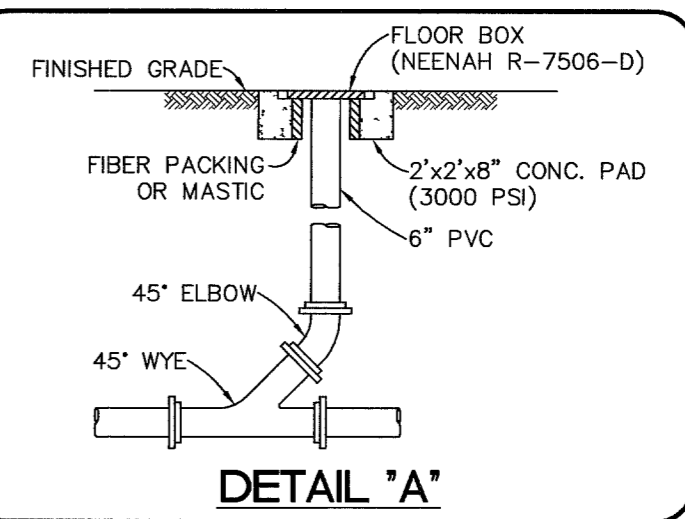
SOUTH 00°32'07" EAST, BEING THE BEARING OF THE CENTERLINE OF "RAMPART BOULEVARD" AS SHOWN BY MAP THEREOF ON FILE IN FILE 64, PAGE 93 OF SURVEYS IN THE COUNTY RECORDER'S OFFICE, CLARK COUNTY, NEVADA, LYING WITHIN THE NORTH HALF (N 1/2) OF SECTION 32, TOWNSHIP 20 SOUTH, RANGE 60 EAST, M.D.M., CITY OF LAS VEGAS, CLARK COUNTY, NEVADA.

**BENCHMARK**

RIVET AND PLATE IN TOP OF CURB @ TOWN CENTER AND VILLAGE CENTER ON WEST EDGE OF ROUNDABOUT.  
CITY OF LAS VEGAS BENCHMARK OLVO 3266  
LOCATED ON THE NORTHEAST CORNER OF ALTA DR. AND UPPER HILL.  
NAVD 88 ELEVATION = 814.1281 METERS, 2671.02 FEET  
SUMMERLIN ELEVATION: 2726.11 FEET  
NOTE: ADD 2.27' TO THE CURRENTLY USED SUMMERLIN BENCHMARK TO EQUAL TO THE APPROVED CITY OF LAS VEGAS BENCHMARK.

**FIRE FLOW CALCULATIONS**

FIRE FLOW REQUIREMENT IS: 1500 GALLONS PER MINUTE AT 20 PSI RESIDUAL PRESSURE  
SQUARE FOOTAGE: 2,200 SQUARE FEET  
LARGEST AREA BETWEEN 4-HOUR AREA SEPARATION: 2,200 SQUARE FEET  
BUILDING HEIGHT: 24 FEET  
NUMBER OF STORIES: 1 FLOOR  
TYPE OF CONSTRUCTION: V-A  
OCCUPANCY: S-2  
FULL AUTOMATIC FIRE SPRINKLER SYSTEM: NO  
REVIEWED BY: SEE SHEET C-8 DATE: \_\_\_\_\_



**NOTICE**

G.C. WALLACE, INC. ASSUME NO RESPONSIBILITY FOR EXISTING UTILITY SHOWN OR NOT SHOWN. THE UTILITIES SHOWN ON THIS DRAWING HAVE BEEN PLOTTED FROM RECORD INFORMATION AND ARE FOR THE CONVENIENCE OF THE CONTRACTOR ONLY. IT IS THE CONTRACTOR'S RESPONSIBILITY TO FIELD VERIFY THE LOCATION AND DEPTH OF ALL RELEVANT UTILITIES PRIOR TO COMMENCEMENT OF CONSTRUCTION. IF A CONFLICT OR DISCREPANCY IS DISCOVERED, THE CONTRACTOR SHALL NOTIFY THE ENGINEER IN WRITING IMMEDIATELY.



NOTE: ADD 2.27' TO THE CURRENTLY USED SUMMERLIN BENCHMARK TO EQUAL TO THE APPROVED CITY OF LAS VEGAS BENCHMARK.

THE VILLAGE AT QUEENSRIDGE  
BUILDING 18  
MOSS DG A/E OF NEVADA, LTD.  
UTILITY PLAN 2

G.C. WALLACE, INC.  
Engineers/Planners/Surveyors  
1555 SOUTH RAMPART BOULEVARD, SUITE 200  
LAS VEGAS, NEVADA 89102  
TELEPHONE: (702) 804-2000 • FAX: (702) 804-2299  
G:\619-295\mprova\WATER-DISTRICT-BUILDING 18-SUBMITTAL\BEECC008.dwg