

UTILITY NOTES + QUANTITIES	UNIT	PUBLIC	PRIVATE
1. INSTALL 12"x6" TAPPING SLEEVE WITH 6" TAPPING VALVE PER UDACS STD. PLATE NO. 22	EA.		1
2. INSTALL 11" BEND (SEE PLAN FOR SIZE)	EA.		1
3. INSTALL 22" BEND (SEE PLAN FOR SIZE)	EA.		1
4. INSTALL 45" BEND (SEE PLAN FOR SIZE)	EA.		2
5. INSTALL 90" BEND (SEE PLAN FOR SIZE)	EA.		4
6. INSTALL TEE (SEE PLAN FOR SIZE)	EA.		15
7. INSTALL 48" SANITARY SEWER MANHOLE PER STD. DWG. NO. SD-1. (CLARK COUNTY DESIGN AND CONSTRUCTION STANDARDS FOR WASTE WATER COLLECTION SYSTEMS)	EA.		12
8. INSTALL 3/4" METER PER UDACS PLATE NO. 10	EA.		1
9. INSTALL 10" PVC WATERLINE	LF		3606
10. INSTALL 1" RPPA PER UDACS PLT. NO. 14A	EA.		1
11. INSTALL 6" PVC WATERLINE	LF		377
12. INSTALL 1" BRASS WATERLINE	LF		29
13. INSTALL 8" PVC SANITARY SEWER LINE	LF		3346
14. INSTALL FIRE HYDRANT ASSEMBLY PER UDACS PLATE NO. 7	EA.		10
15. INSTALL GATE VALVE (SEE PLAN FOR SIZE)	EA.		15
16. INSTALL SERVICE SATELL PER UDACS PLATE NO. 1B.	EA.		1
17. STUB AND CAP WATER LINE/SEE BUILDING PLAN FOR CONTIN.	EA.		5
18. BLIND FLANGE AND BLOW OFF ASSEMBLY	EA.		1
19. INSTALL 10"x10" TAPPING SLEEVE WITH 10" TAPPING VALVE PER UDACS STD. PLATE NO. 22.	EA.		1

FIRE FLOW CALCULATIONS

FIRE FLOW REQUIREMENT IS: 1500 GALLONS PER MINUTE AT 20 PSI RESIDUAL PRESSURE.

SQUARE FOOTAGE: 2,200 SQUARE FEET
 LARGEST AREA BETWEEN 4-HOUR AREA SEPARATION: 2,200 SQUARE FEET

BUILDING HEIGHT: 24 FEET
 NUMBER OF STORIES: 1 FLOOR
 TYPE OF CONSTRUCTION: V-A
 OCCUPANCY: S-2
 FULL AUTOMATIC FIRE SPRINKLER SYSTEM: NO

REVIEWED BY: Robert Bell DATE: 12/9/06

BASIS OF BEARING

SOUTH 00°32'07" EAST, BEING THE BEARING OF THE CENTERLINE OF "RAMPART BOULEVARD" AS SHOWN BY MAP THEREOF ON FILE IN FILE 64, PAGE 93 OF SURVEYS IN THE COUNTY RECORDER'S OFFICE, CLARK COUNTY, NEVADA, LYING WITHIN THE NORTH HALF (N 1/2) OF SECTION 32, TOWNSHIP 20 SOUTH, RANGE 60 EAST, M.D.M., CITY OF LAS VEGAS, CLARK COUNTY, NEVADA.

BENCHMARK

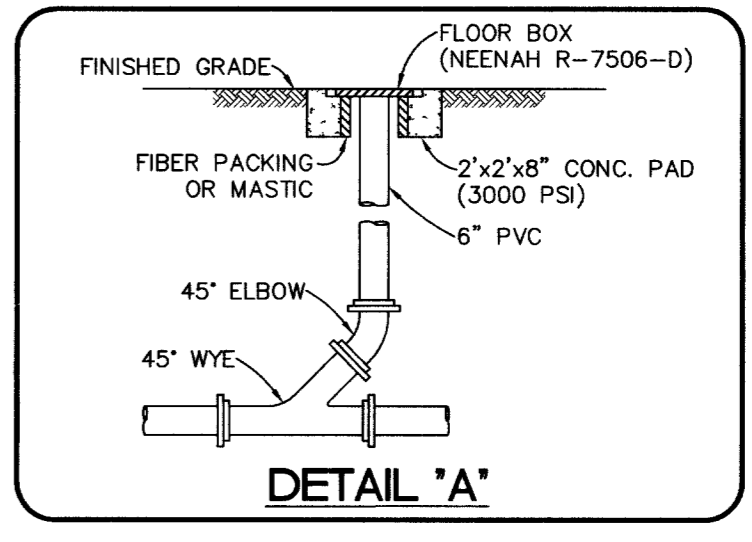
RIVET AND PLATE IN TOP OF CURB @ TOWN CENTER AND VILLAGE CENTER ON WEST EDGE OF ROUNDABOUT.

CITY OF LAS VEGAS BENCHMARK OLVD0 32E6 LOCATED ON THE NORTHEAST CORNER OF ALTA DR. AND UPPER HILL. NAVD 88 ELEVATION = 814.1281 METERS, 2671.02 FEET. SUMNERLIN ELEVATION: 2726.11 FEET

NOTE: ADD 2.27' TO THE CURRENTLY USED SUMNERLIN BENCHMARK TO EQUAL TO THE APPROVED CITY OF LAS VEGAS BENCHMARK.

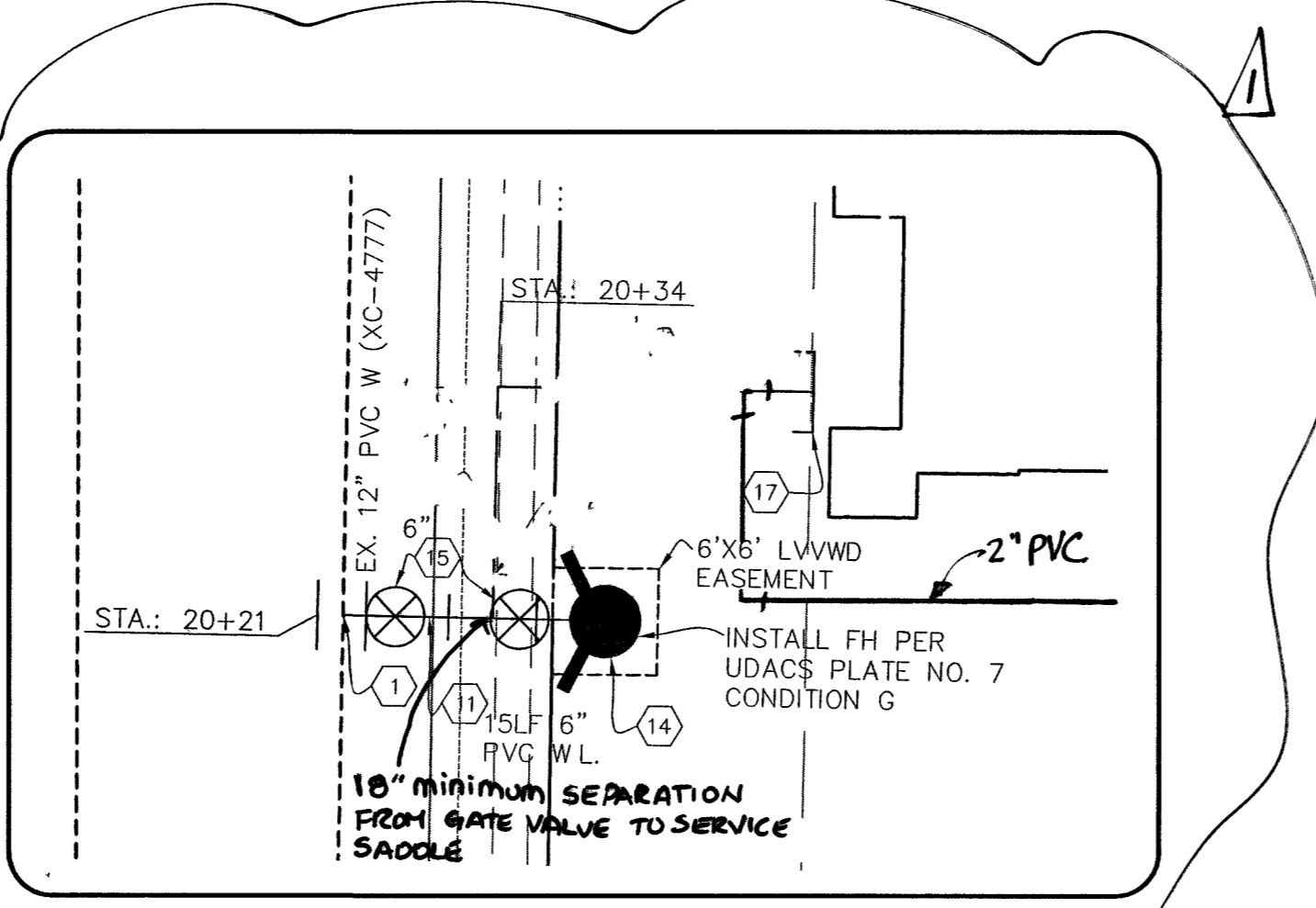
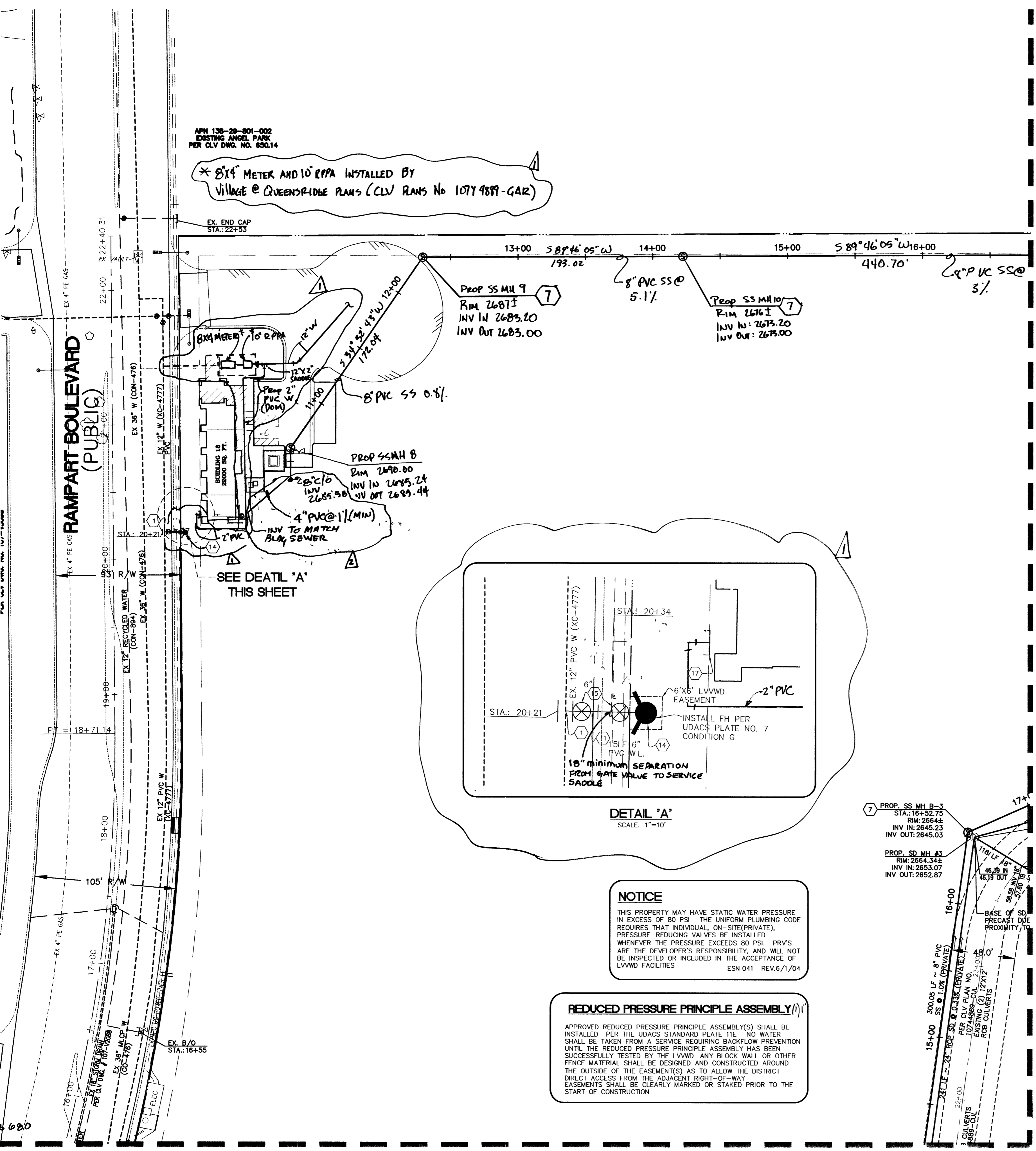
Call before you Dig.
 1-800-227-2600
 UNDERGROUND SERVICE (USA)

Call before you Dig.
 1-702-455-7511
 1-702-229-6611



APPROVED FOR CONSTRUCTION
 SHEET C-1, C-2, C-8, C-9, C-10, C-11 & C-18
 Robert Bell 12/9/06
 CITY OF LAS VEGAS FIRE DEPARTMENT DATE

APPROVED FOR CONSTRUCTION
 LAS VEGAS VALLEY WATER DISTRICT DATE
 PROJECT # 113520



NOTICE

THIS PROPERTY MAY HAVE STATIC WATER PRESSURE IN EXCESS OF 80 PSI THE UNIFORM PLUMBING CODE REQUIRES THAT INDIVIDUAL, ON-SITE (PRIVATE), PRESSURE-REDUCING VALVES BE INSTALLED WHENEVER THE PRESSURE EXCEEDS 80 PSI. PRV'S ARE THE DEVELOPER'S RESPONSIBILITY, AND WILL NOT BE INSPECTED OR INCLUDED IN THE ACCEPTANCE OF LVWD FACILITIES. ESN 041 REV.6/1/04

REDUCED PRESSURE PRINCIPLE ASSEMBLY (RPPA)

APPROVED REDUCED PRESSURE PRINCIPLE ASSEMBLY(S) SHALL BE INSTALLED PER THE UDACS STANDARD PLATE 11E. NO WATER SHALL BE TAKEN FROM A SERVICE REQUIRING BACKFLOW PREVENTION UNTIL THE REDUCED PRESSURE PRINCIPLE ASSEMBLY HAS BEEN SUCCESSFULLY TESTED BY THE LVWD. ANY BLOCK WALL OR OTHER FENCE MATERIAL SHALL BE DESIGNED AND CONSTRUCTED AROUND THE OUTSIDE OF THE EASEMENT(S) AS TO ALLOW THE DISTRICT DIRECT ACCESS FROM THE ADJACENT RIGHT-OF-WAY. EASEMENTS SHALL BE CLEARLY MARKED OR STAKED PRIOR TO THE START OF CONSTRUCTION.

FOR CONTINUATION
 SEE SHEET C-10

FOR CONTINUATION
 SEE SHEET C-9

THE VILLAGE AT QUEENSRIDGE
 BUILDING 18
 MOSS DG A/E OF NEVADA, LTD.
 UTILITY PLAN 1

DRAWING
 C-8