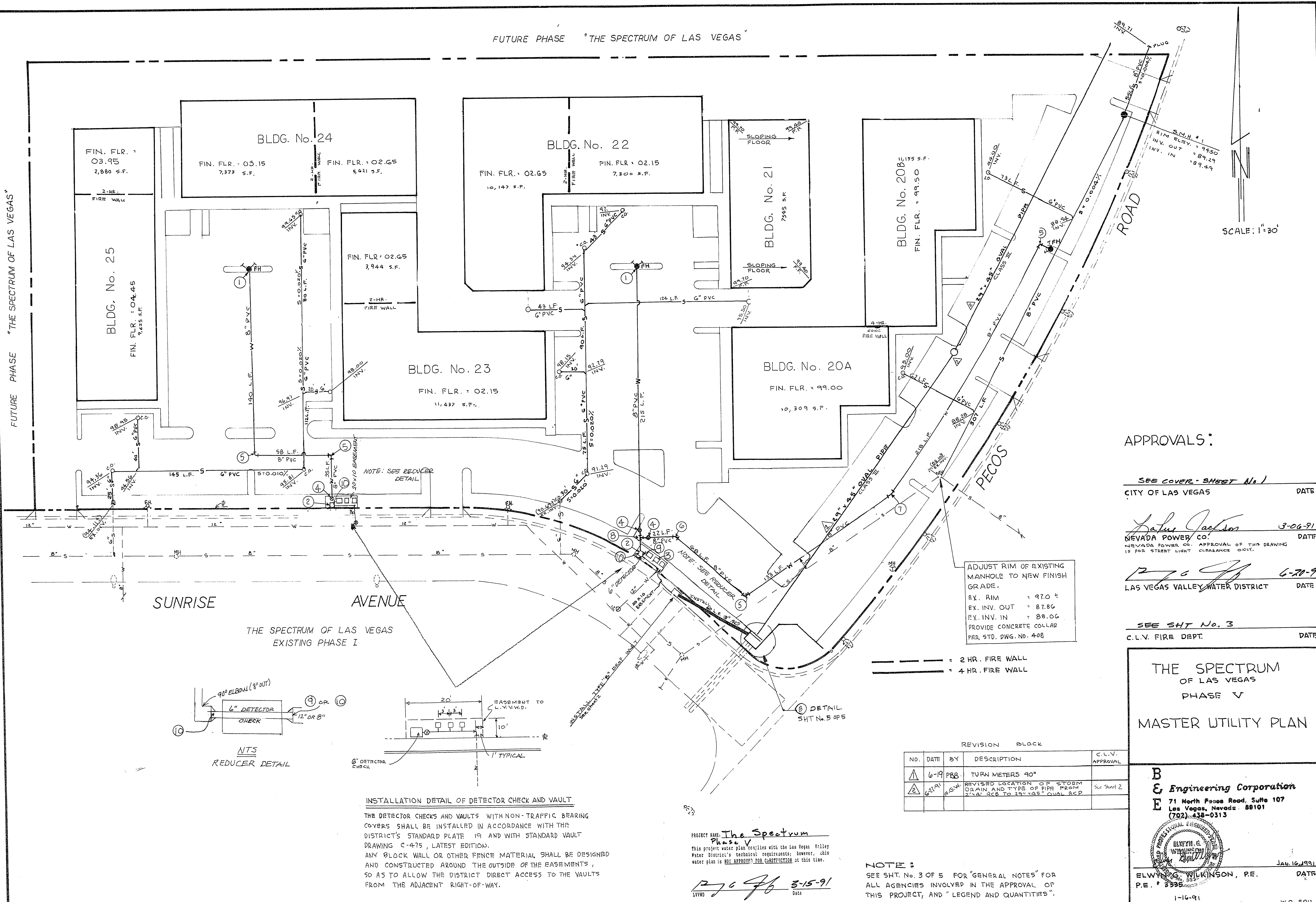


FUTURE PHASE "THE SPECTRUM OF LAS VEGAS"

FUTURE PHASE "THE SPECTRUM OF LAS VEGAS"

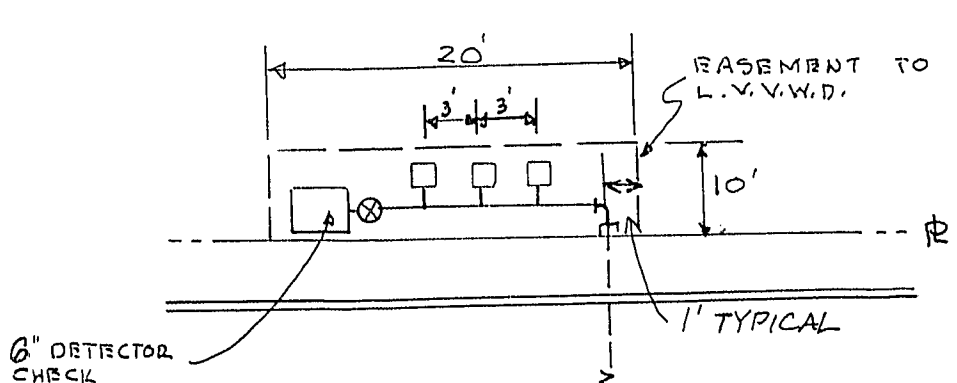
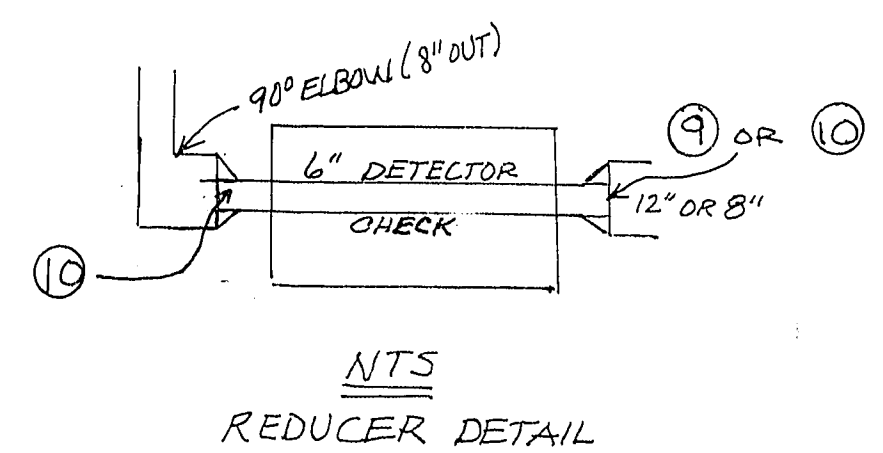


APPROVALS:

SEE COVER SHEET No. 1
 CITY OF LAS VEGAS DATE
Latus Jackson 3-06-91
 NEVADA POWER CO. DATE
 NEVADA POWER CO. APPROVAL OF THIS DRAWING
 IS FOR STREET LIGHT CLEARANCE ONLY.
[Signature] 6-20-91
 LAS VEGAS VALLEY WATER DISTRICT DATE
 SEE SHT No. 3
 C.L.V. FIRE DEPT. DATE

ADJUST RIM OF EXISTING
 MANHOLE TO NEW FINISH
 GRADE.
 EX. RIM = 97.0 ±
 EX. INV. OUT = 87.86
 EX. INV. IN = 88.06
 PROVIDE CONCRETE COLLAR
 PER STD. DWG. NO. 408

--- = 2 HR. FIRE WALL
 --- = 4 HR. FIRE WALL



INSTALLATION DETAIL OF DETECTOR CHECK AND VAULT
 THE DETECTOR CHECKS AND VAULTS WITH NON-TRAFFIC BEARING COVERS SHALL BE INSTALLED IN ACCORDANCE WITH THE DISTRICT'S STANDARD PLATE 19 AND WITH STANDARD VAULT DRAWING C-475, LATEST EDITION.
 ANY BLOCK WALL OR OTHER FENCE MATERIAL SHALL BE DESIGNED AND CONSTRUCTED AROUND THE OUTSIDE OF THE EASEMENTS, SO AS TO ALLOW THE DISTRICT DIRECT ACCESS TO THE VAULTS FROM THE ADJACENT RIGHT-OF-WAY.

NO.	DATE	BY	DESCRIPTION	C.L.V. APPROVAL
1	6-19	FRB	TURN METERS 90°	
2	6-21-91	ELW	REVISED LOCATION OF STORM DRAIN AND TYPE OF PIPE FROM 23" Ø RCB TO 24" Ø 45" OVAL RCB	See Sheet 2

PROJECT NAME: The Spectrum Phase V
 This project water plan complies with the Las Vegas Valley Water District's technical requirements; however, this water plan is NOT APPROVED FOR CONSTRUCTION at this time.

[Signature] 3-15-91
 LIVED DATE

NOTE:
 SEE SHT. No. 3 OF 5 FOR "GENERAL NOTES" FOR ALL AGENCIES INVOLVED IN THE APPROVAL OF THIS PROJECT, AND "LEGEND AND QUANTITIES".

THE SPECTRUM OF LAS VEGAS
 PHASE V
 MASTER UTILITY PLAN

B
E Engineering Corporation
 71 North Pecos Road, Suite 107
 Las Vegas, Nevada 89101
 (702) 438-0313



ELWYN G. WILKINSON, P.E. DATE
 P.E. # 3335
 1-16-91