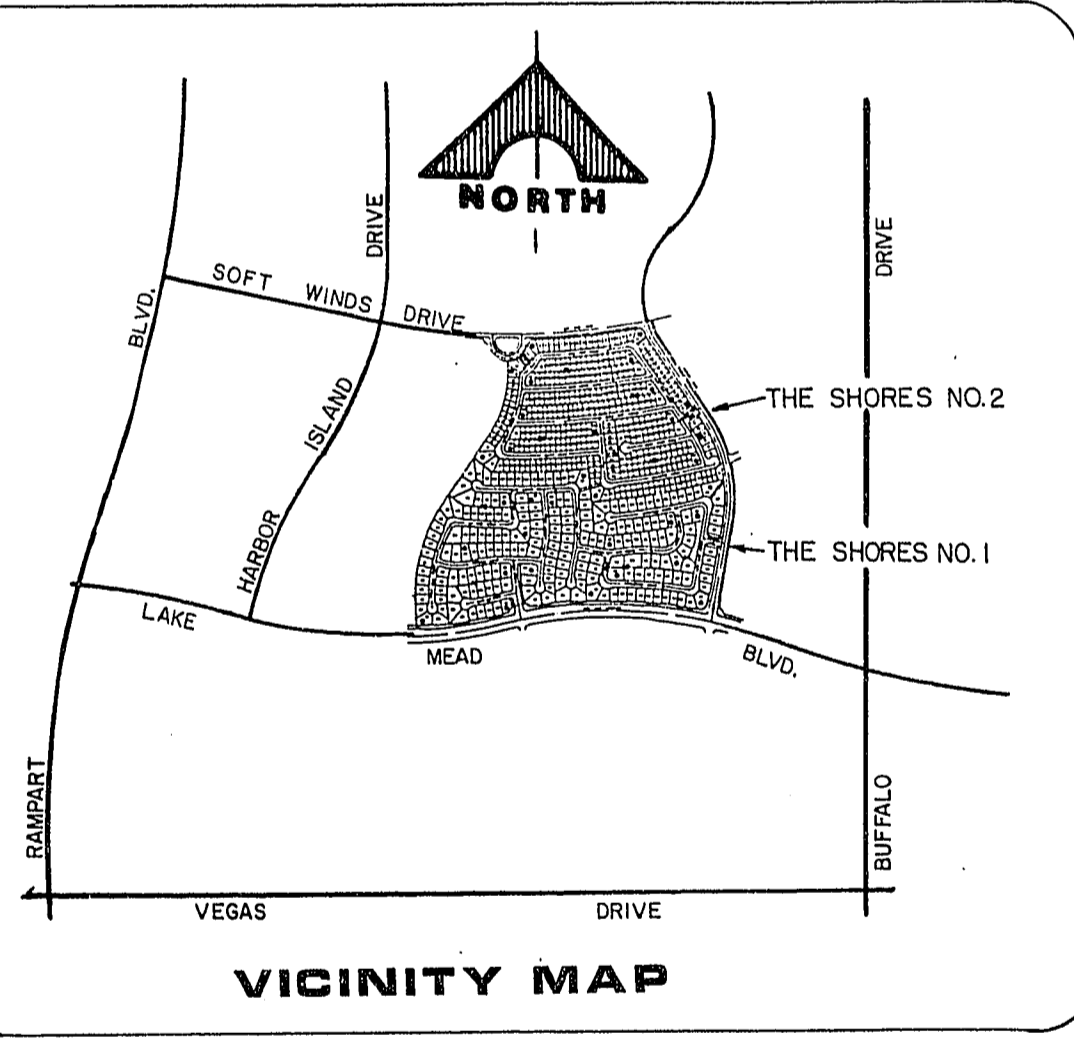


JOB NO. 5543.8710

THE SHORES NO. 2



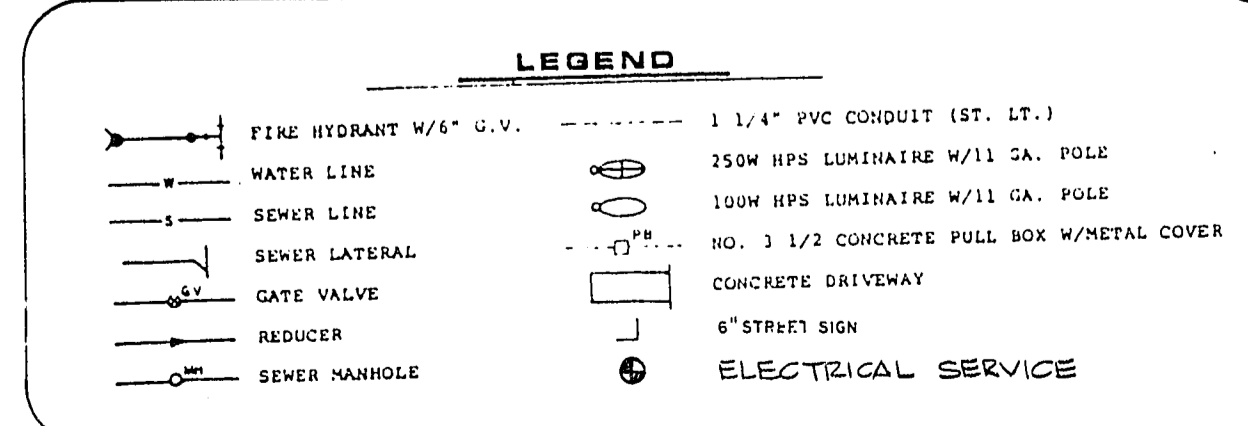
**ESTIMATE OF QUANTITIES**

	1A	1B	1C	1D
STD. F.H. W/6" G.V. & 6" ACP LATERAL	4 EA	4 EA	4 EA	2 EA
12" ACP	1224 LF	1198 LF	122 LF	122 LF
8" ACP	324 LF	—	1802 LF	1752 LF
6" ACP	808 LF	939 LF	644 LF	258 LF
12" GATE VALVE	3 EA	3 EA	—	—
8" GATE VALVE	—	—	7 EA	4 EA
6" GATE VALVE	1 EA	2 EA	—	—
3/4" WATER SERVICE	52 EA	52 EA	55 EA	54 EA
3/8" METER (BY L.V.V.W.D.)	52 EA	52 EA	55 EA	54 EA
METER BOX	52 EA	52 EA	55 EA	54 EA
2" B.O. W/CAP	1 EA	1 EA	3 EA	1 EA
1" IRRIGATION METER (BY L.V.V.W.D.)	1 EA	—	—	—
<b>MISCELLANEOUS</b>				
6" D-3 STREET NAME SIGN	4 EA	4 EA	4 EA	4 EA

**NOTE:**  
NO PROPOSED OR EXISTING MANHOLE, VALVE OR VAULT SHALL BE LOCATED IN A CURB OR VALLEY GUTTER.

**LAS VEGAS VALLEY WATER DISTRICT - WATER NOTES**

- ALL WORK TO CONFORM TO LAS VEGAS VALLEY WATER DISTRICT LATEST STANDARD PLATES AND SPECIFICATIONS.
- ALL WORK, EXCEPT AS MODIFIED HEREON OR BY NOTE NO. 1, SHALL BE DONE IN ACCORDANCE WITH THE MOST CURRENT DRAFT OR EDITION OF UNIFORM STANDARD SPECIFICATIONS FOR PUBLIC WORKS CONSTRUCTION OFF-SITE IMPROVEMENTS CLARK COUNTY AREA.
- NOTICE TO BE GIVEN ENGINEERING DEPARTMENT OF THE LAS VEGAS VALLEY WATER DISTRICT 48 HOURS PRIOR TO ACTUAL CONSTRUCTION.
- SERVICE SADDLES OR TAPPED COLLARS WILL BE REQUIRED ON ALL 3/4" AND 1" SERVICE LATERALS. SERVICE SADDLES WILL ONLY BE PERMITTED ON 1 1/2" AND 2" SERVICE LATERALS, DOUBLE TAPPED COLLARS ARE NOT PERMITTED.
- ALL LINES TO BE PRESSURE TESTED TO 200 PSI.
- DEFLECTION ANGLE SHALL NOT EXCEED 24 DEGREES PER 13 FOOT SECTION OF PIPE FOR PIPE SIZES SMALLER THAN 14 INCHES AND SHALL NOT EXCEED 2 DEGREES FOR PIPE SIZES BETWEEN 14 INCHES AND 16 INCHES.
- ALL METERS SHALL BE LOCATED OUTSIDE OF DRIVEWAYS.
- DETECTOR TAPE REQUIRED IN ACCORDANCE WITH STANDARD PLATE NO. 27 WERE INDICATED AND AS FOLLOWS:  
(A) OVER ALL MAINS NOT INSTALLED AT 6 FEET FROM BACK OF CURB.  
(B) OVER ALL SERVICE LATERALS NOT INSTALLED AT RIGHT ANGLES TO MAINS.
- CALL BEFORE YOU DIG - 1800-227-2600.



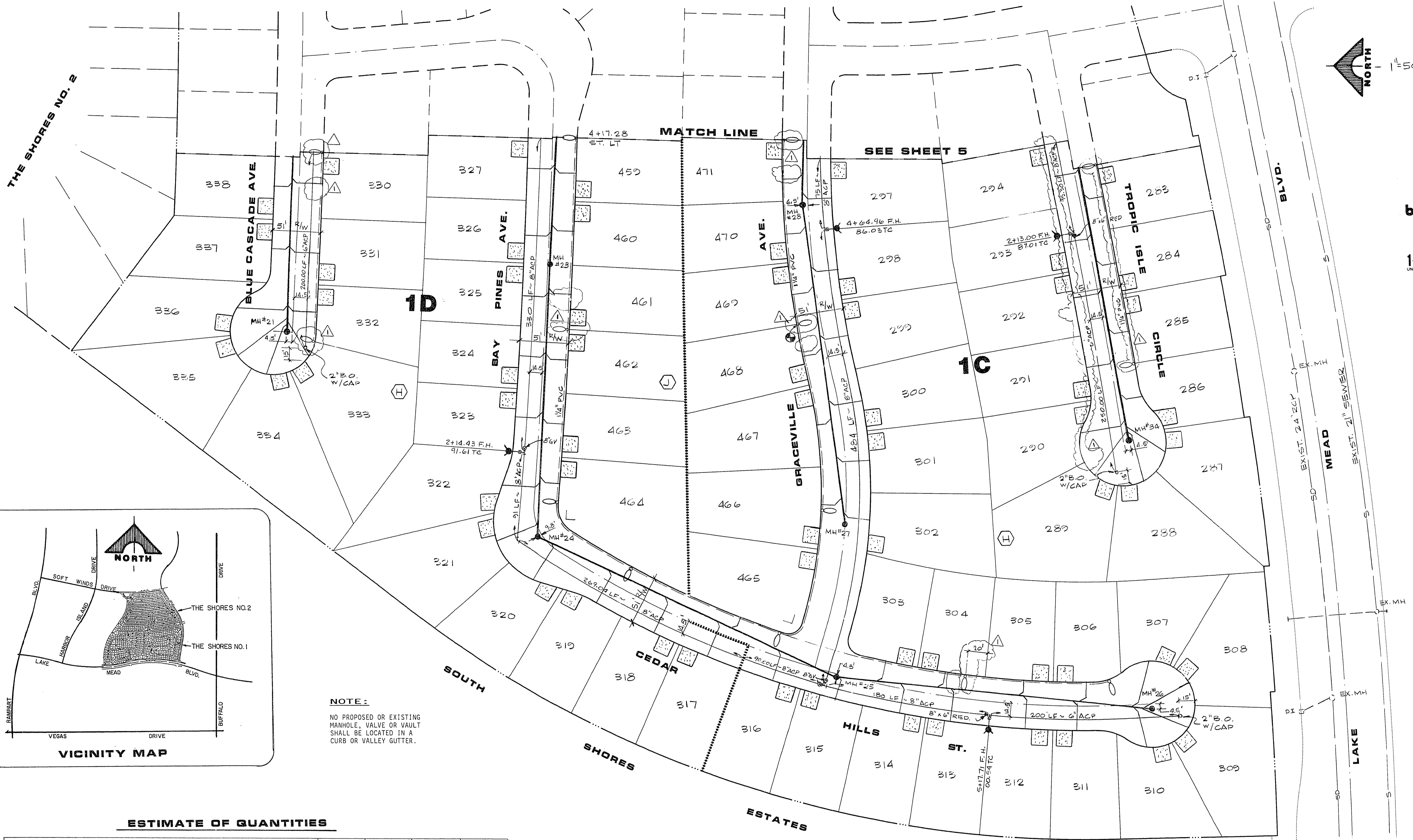
**APPROVALS**

NEVADA POWER COMPANY approves the point of service to the street light system. This shall not be deemed to consent to the placement of the light poles which may be in conflict with Nevada Power Company's prior rights and/or facilities.

9-8-89  
by *[Signature]*  
NEVADA POWER COMPANY

7-6-89  
DATE  
LAS VEGAS VALLEY WATER DISTRICT

*[Signature]* 7-6-89  
DATE  
CLV FIRE DEPARTMENT



Call before you Dig.  
1-800-227-2600  
UNDERGROUND SERVICE UTILITIES

REVISIONS

REV.	DATE	DESCRIPTION
1	9-6-89	REVISED STREET LIGHTS
2	9-6-89	REVISED STREET LIGHTS
3	9-6-89	REVISED STREET LIGHTS
4	9-6-89	REVISED STREET LIGHTS
5	9-6-89	REVISED STREET LIGHTS

RECORDED

DAVID WALLACE, INC.  
1155 SOUTH RAINBOW BLVD., LAS VEGAS, NEVADA 89102

G.C. WALLACE, INC.  
Engineering/Architecture

LEWIS HOMES OF NEVADA  
THE SHORES NO. 1A, 1B, 1C & 1D BY LEWIS HOMES

UTILITY PLAN

SHEET 4

OF 28 SHEETS

884 DIETERICH-POST 65328

384 3074-4066-1