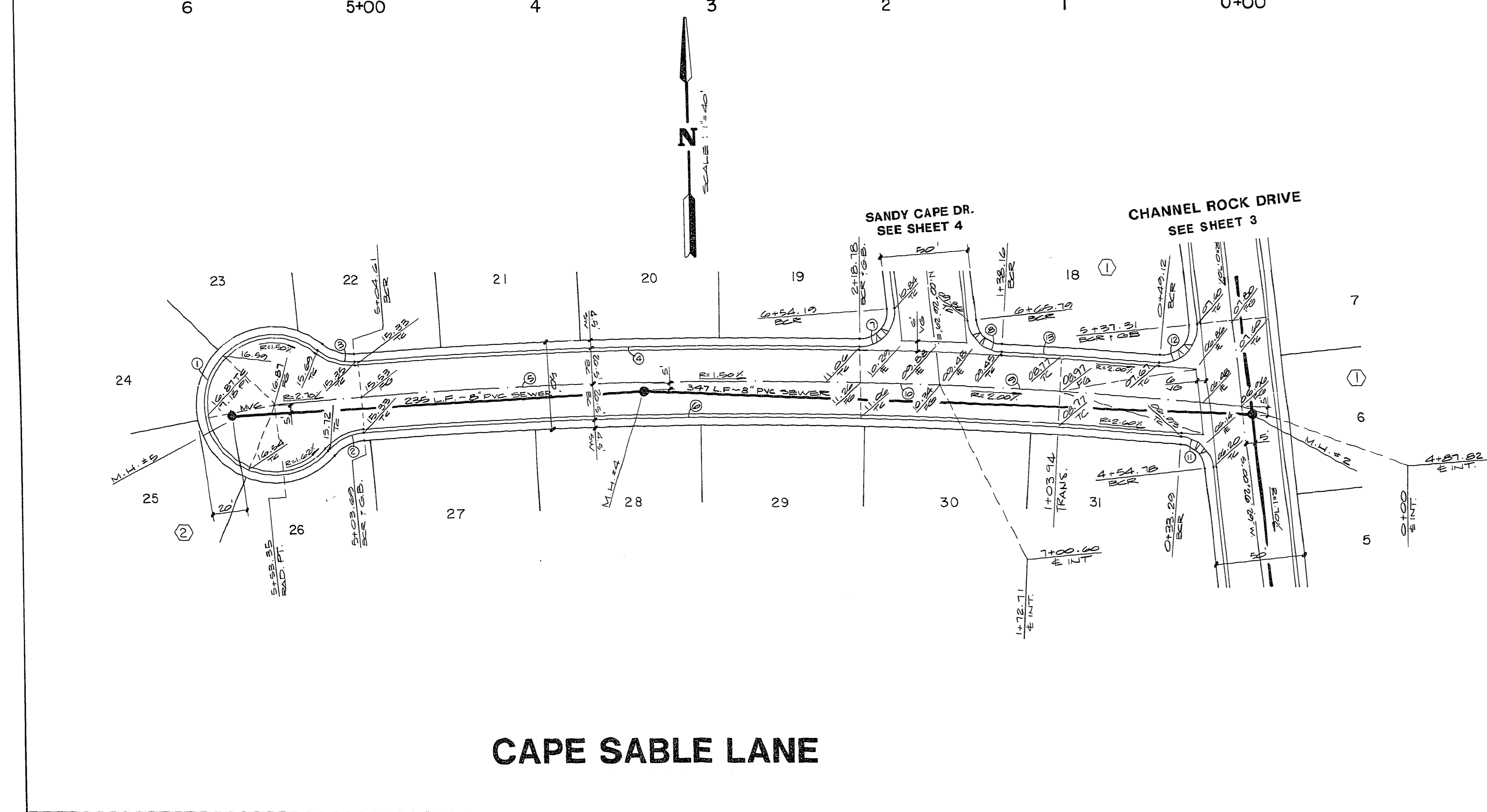


REVISION	
DATE	3-9-88
BY	TL
UNAPPROVED STREET NAMES	
REV	1

**ESI ENGINEERS & SURVEYORS INC.**  
 7210 W. GARDNER AVE., SUITE 100, TAMPA, FLORIDA 33615  
 SUBMITTED FOR REVIEW  
 PAUL J. ...  
 11/9/87



**CURVE DATA TABLE**

NO.	B	DELTA	L	T
1	40.50	26° 29' 37"	189.79	
2	30.00	44° 46' 38"	23.45	12.38
3	30.00	43° 44' 09"	22.90	12.04
4	2727.40	06° 03' 00"	287.99	144.13
5	2706.90	08° 03' 25"	380.64	190.63
6	2686.40	09° 57' 24"	466.83	234.01
7	20.00	97° 18' 04"	33.96	22.73
8	20.00	80° 59' 32"	28.27	17.08
9	2706.90	03° 39' 20"	172.71	86.38
10	2706.90	11° 42' 45"	553.35	277.64
11	20.00	78° 46' 21"	27.50	16.42
12	20.00	100° 53' 32"	35.22	24.22
13	2727.40	01° 53' 04"	89.70	44.85

TITLE  
**STREET & SEWER PLAN & PROFILE**  
 (CAPE SABLE LANE)  
 PROJECT  
**THE LAKES ESTATES UNIT NO.2**

WO NO.	5010
BY	CHAD
DATE	10/87
HORIZ. SCALE	1" = 20'
VERT. SCALE	1" = 4'

**QUANTITY ESTIMATE**  
 2.0" ASPHALTIC CONCRETE PAVING . . . . . 2,509 S.F.  
 CONCRETE VALLEY GUTTER . . . . . 600 S.F.  
 "ROLL" TYPE CURB AND GUTTER . . . . . 1,081 L.F.  
 CONCRETE SIDEWALK . . . . . 5,181 S.F.

SHEET  
**5**  
 OF 8 SHEETS