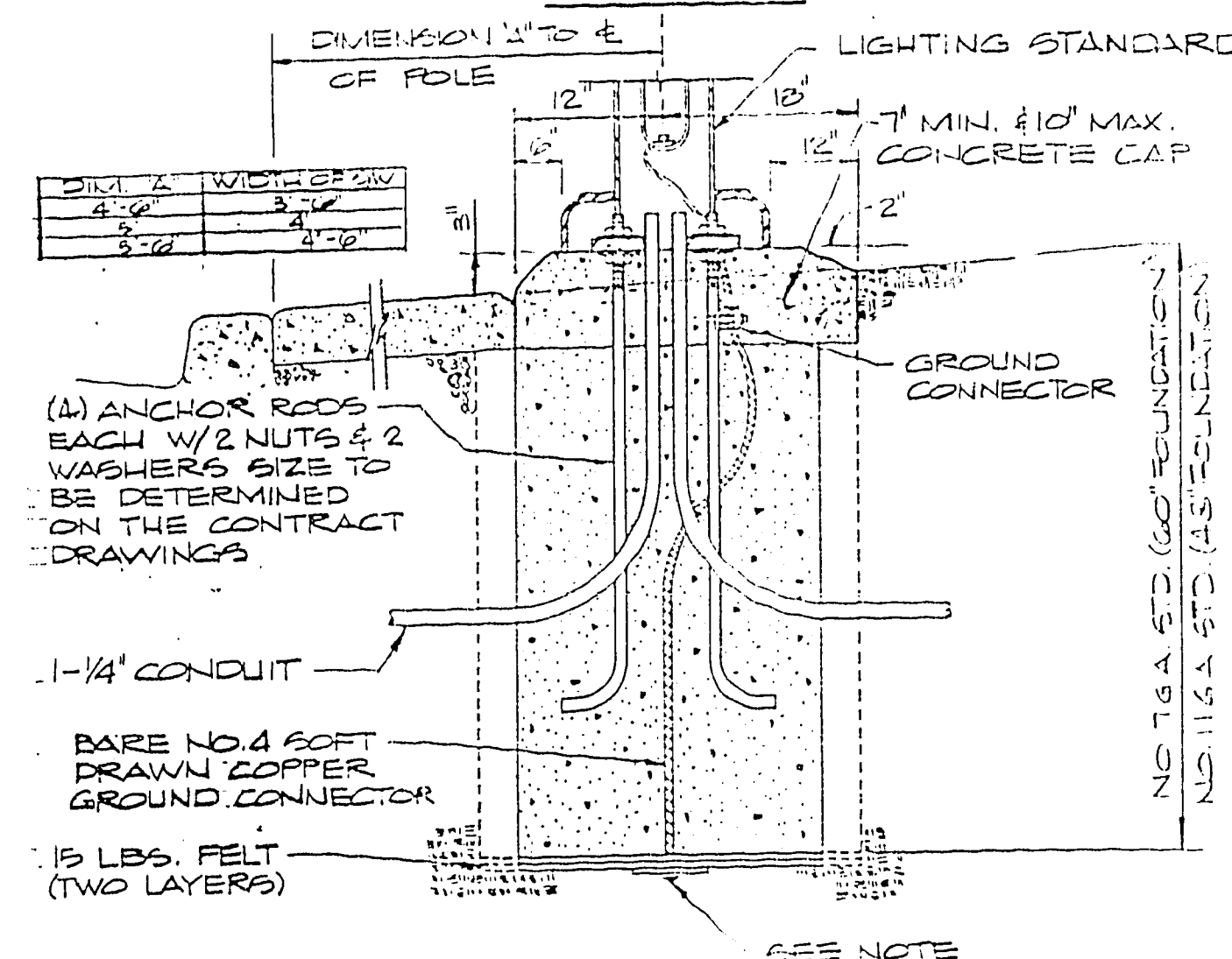
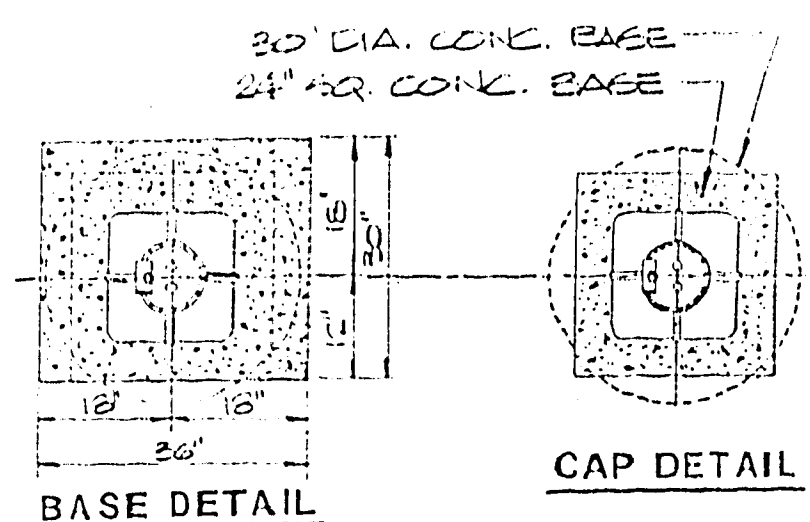
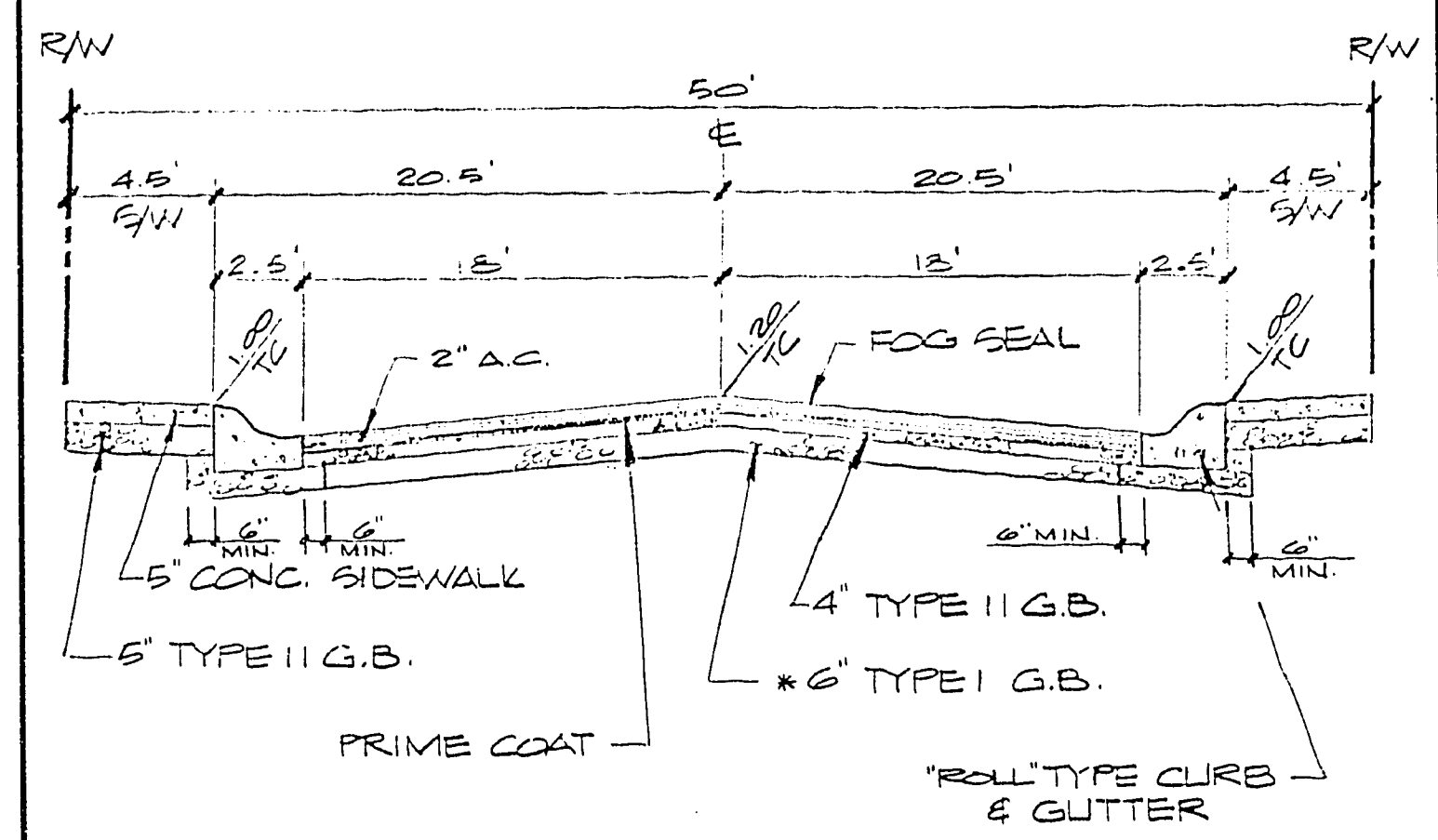


- NOTE:**
- MADE ELECTRODE SHALL BE IN ACCORDANCE W/ARTICLE 250-83 OF THE NATIONAL ELECTRICAL CODE
  - TOP OF SLOPE IS DOWN AND AWAY FROM THE STANDARD FOR DRAINAGE

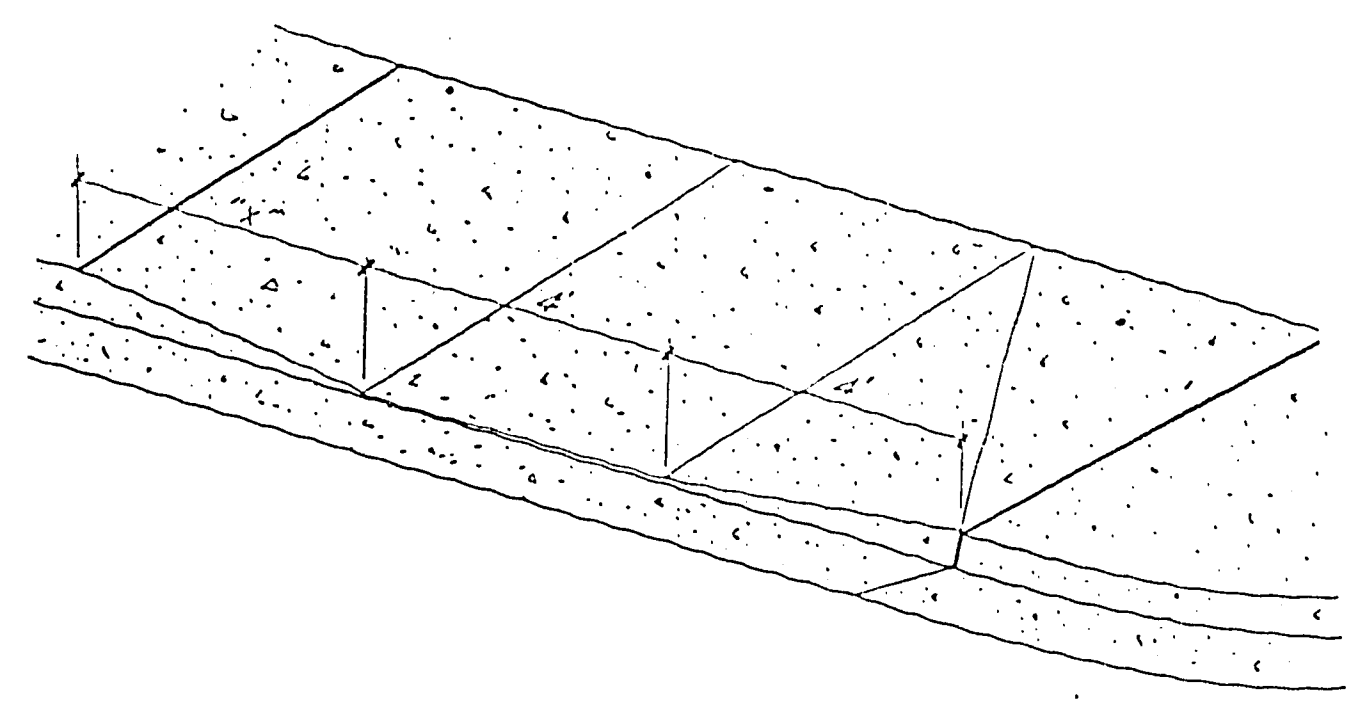


**TYPICAL STREET LIGHT DETAIL**



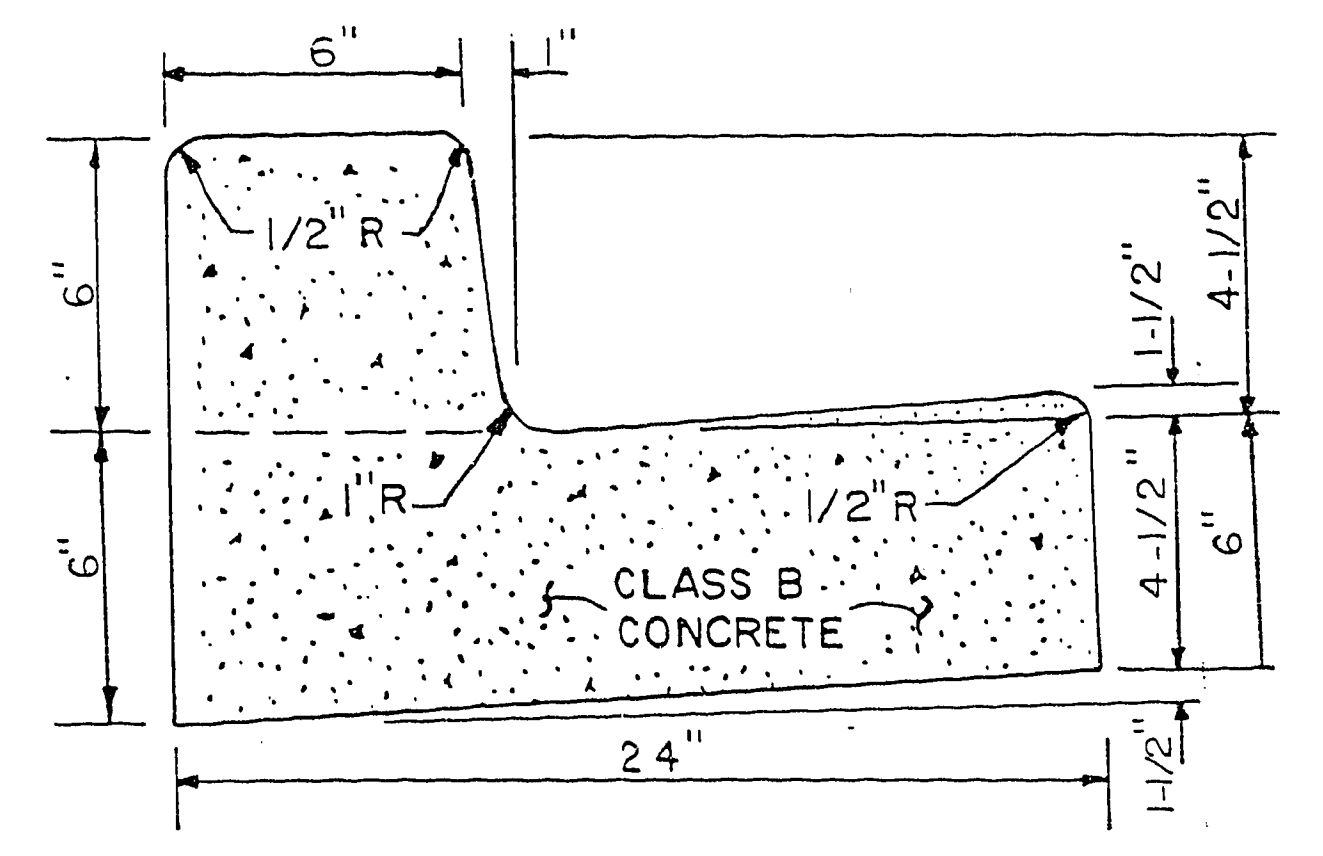
- APPROVAL FOR USE OF NATIVE MATERIAL TO BE PROCESSED IN ACCORDANCE WITH CLV "STATEMENT OF POLICY FOR USE OF NATIVE MATERIAL IN LIEU OF IMPORTED TYPE I BASE FOR DEDICATED CITY STREETS" DATED JULY 25, 1984.
- 6" MINIMUM TYPE I OR TYPE II GRAVEL BASE UNDER CURB AND GUTTER.

**50' TYPICAL STREET SECTION**  
ALL INTERIOR STREETS EXCEPT PRIZE LAKE DRIVE



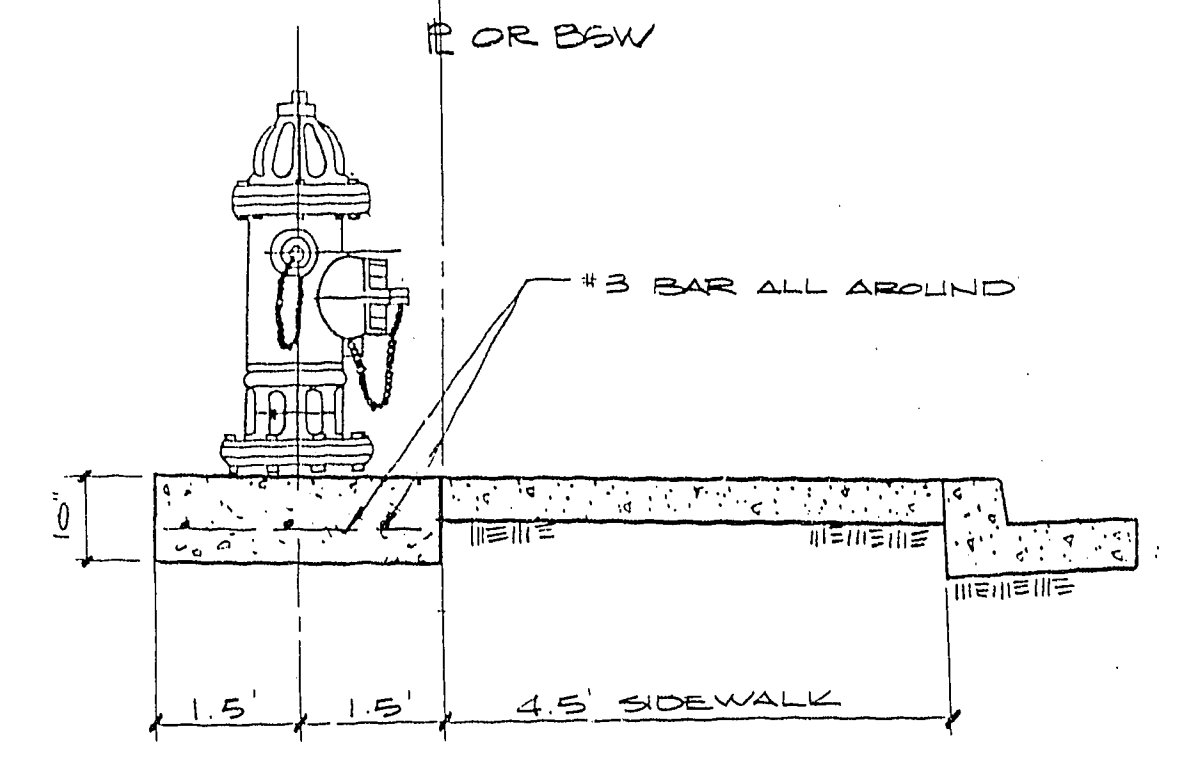
SLOPE	"V"
0% TO 1.5%	2'
1.5% TO 2.5%	4'
2.5% TO 3.5%	5.0'
3.5% TO 4.5%	5.6'
4.5% TO 5.5%	6.4'

**WHEELCHAIR RAMP SLOPE DETAIL**

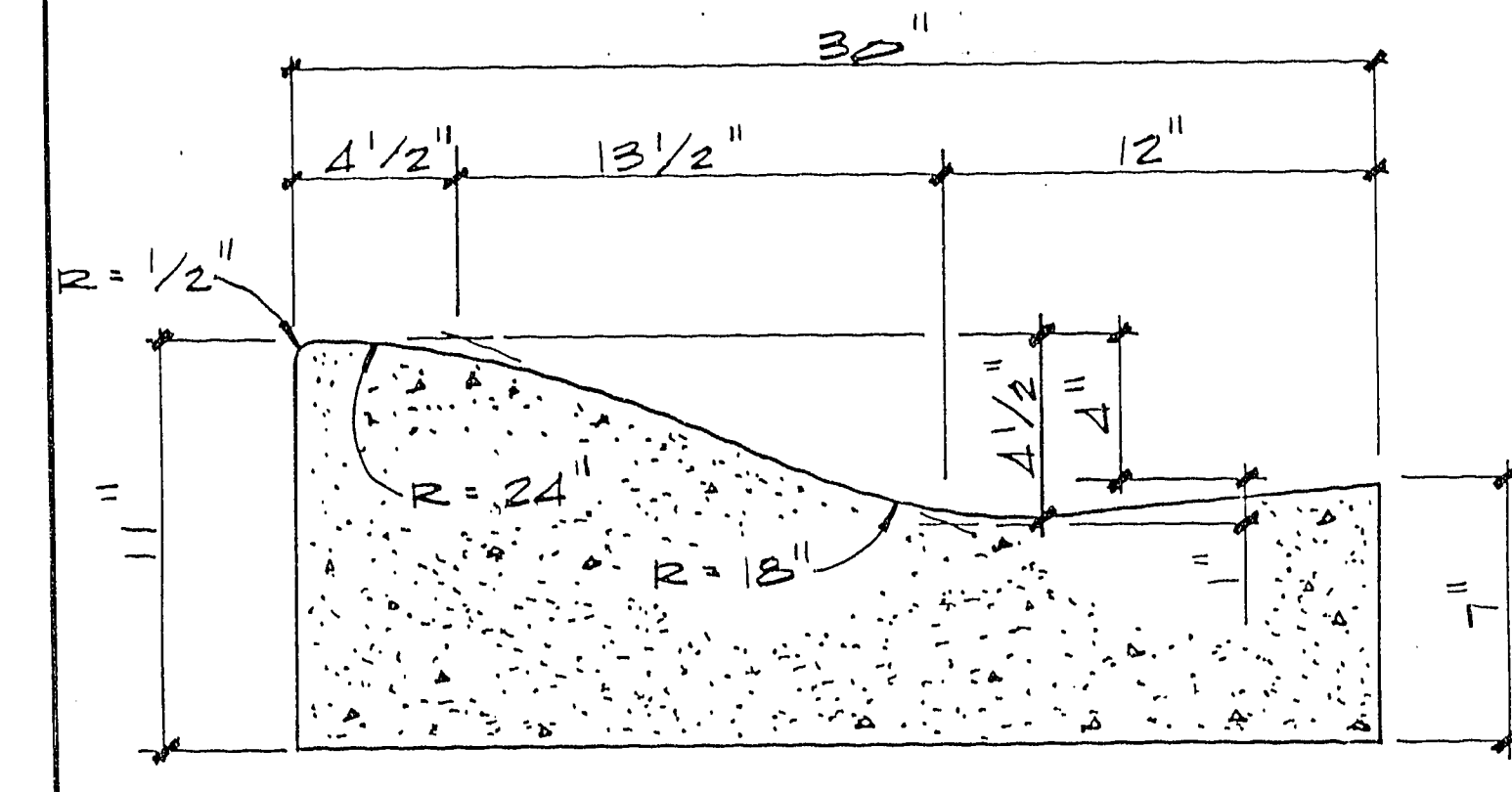


**TYPICAL 24" "L" TYPE CURB & GUTTER**

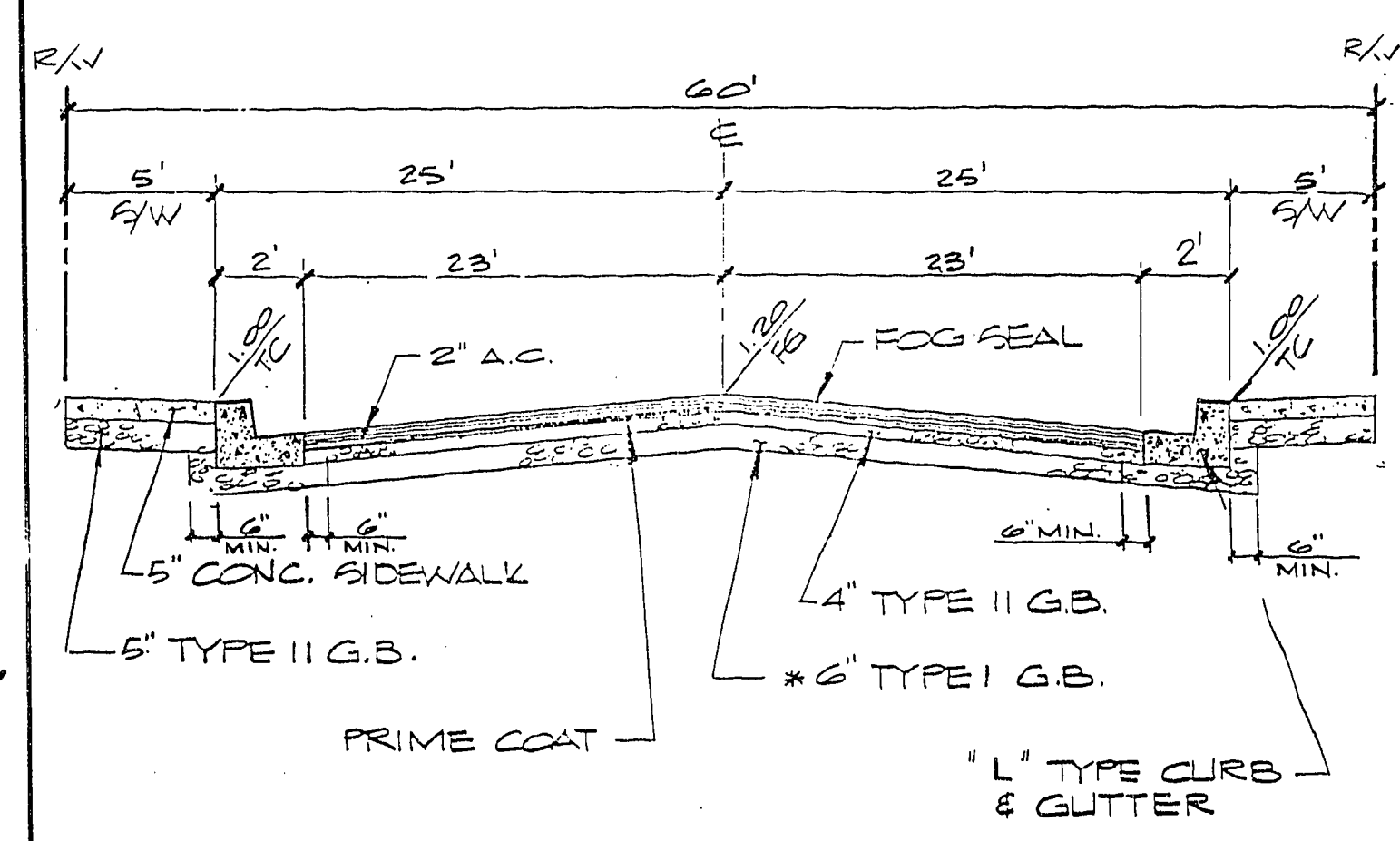
ES! ENGINEERS & SURVEYORS INC.  
SUBMITTED BY: *Paul E. ...*



**TYPICAL FIRE HYDRANT DETAIL**

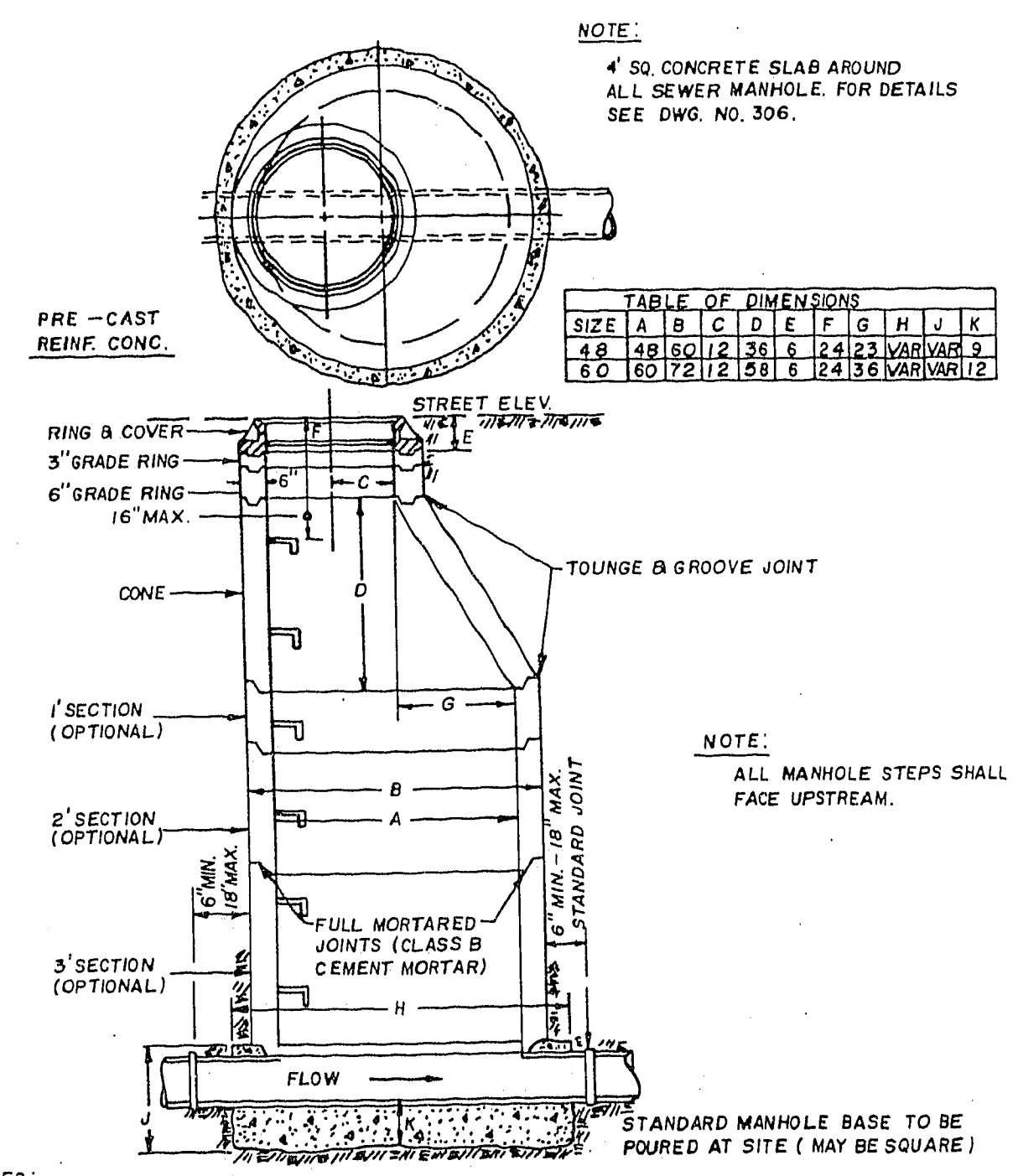


**TYPICAL 30" "ROLL" TYPE CURB & GUTTER**



- APPROVAL FOR USE OF NATIVE MATERIAL TO BE PROCESSED IN ACCORDANCE WITH CLV "STATEMENT OF POLICY FOR USE OF NATIVE MATERIAL IN LIEU OF IMPORTED TYPE I BASE FOR DEDICATED CITY STREETS" DATED JULY 25, 1984.
- 6" MINIMUM TYPE I OR TYPE II GRAVEL BASE UNDER CURB AND GUTTER.

**TYPICAL 60' STREET SECTION**  
PRIZE LAKE DRIVE



- NOTES:**
- PRECAST CONCRETE SECTIONS SHALL CONFORM TO A.S.T.M. DESIGNATION C-478 AS LAST AMENDED.
  - MANHOLE BASES MAY ALSO BE SQUARE.
  - MIN. GRADE RINGS TO BE USED IS THREE, SEQUENCE IS 1-6" AND 2-3". MAX. GRADE RINGS TO BE USED IS FOUR, SEQUENCE IS 1-6" AND 3-3".
  - TYPICAL MANHOLE SHALL BE 48" INCH IN DIA. UNLESS OTHERWISE SPECIFIED.

**STANDARD ECCENTRIC MANHOLE**

DETAIL SHEET  
THE LAKES ESTATES UNIT NO. 1  
NO. 2085  
BY: PC  
DATE: 1/87  
SCALE: NONE  
SHEET: 2 OF 13 SHEETS

16-7-196

1071-1932-1