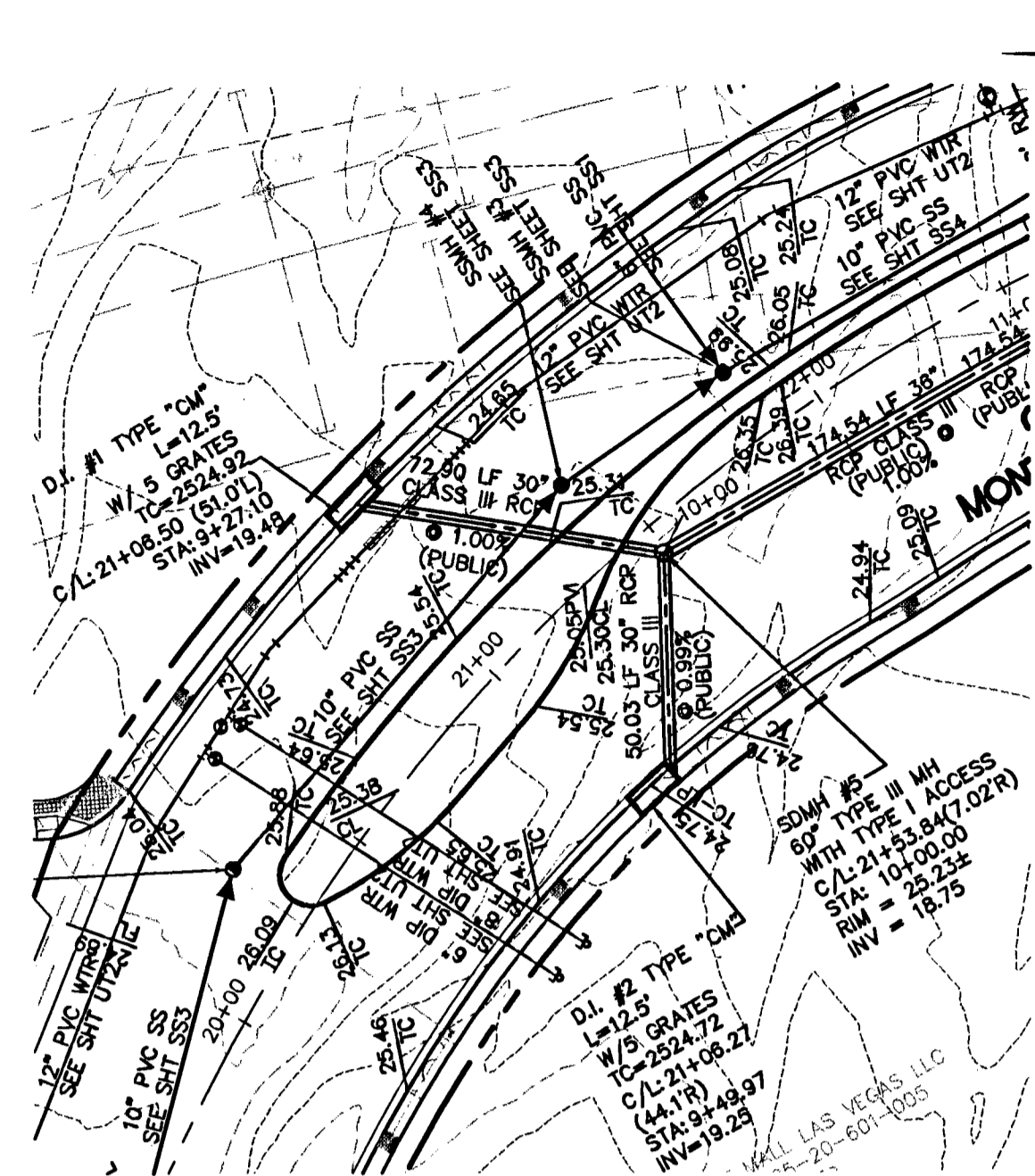
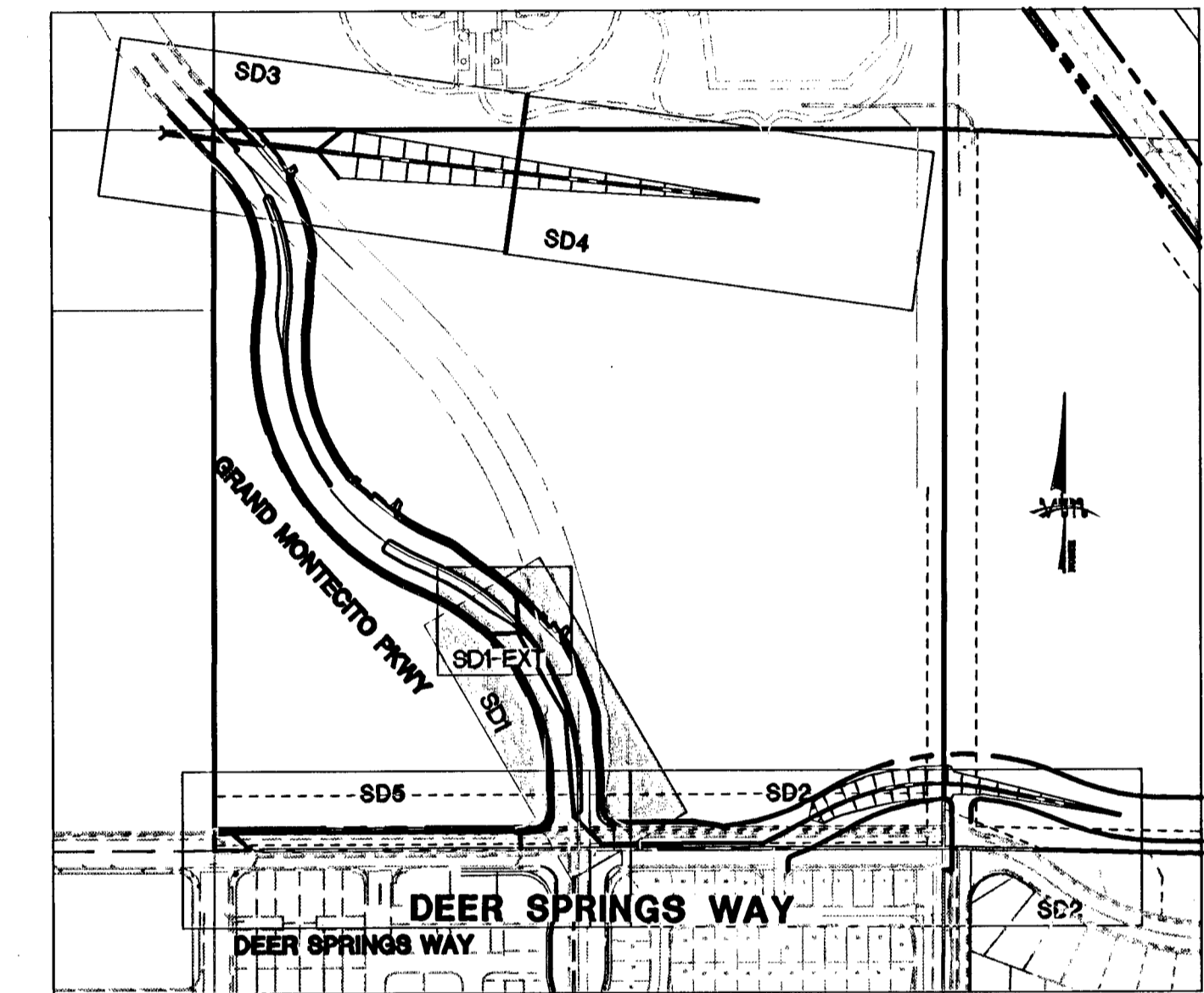


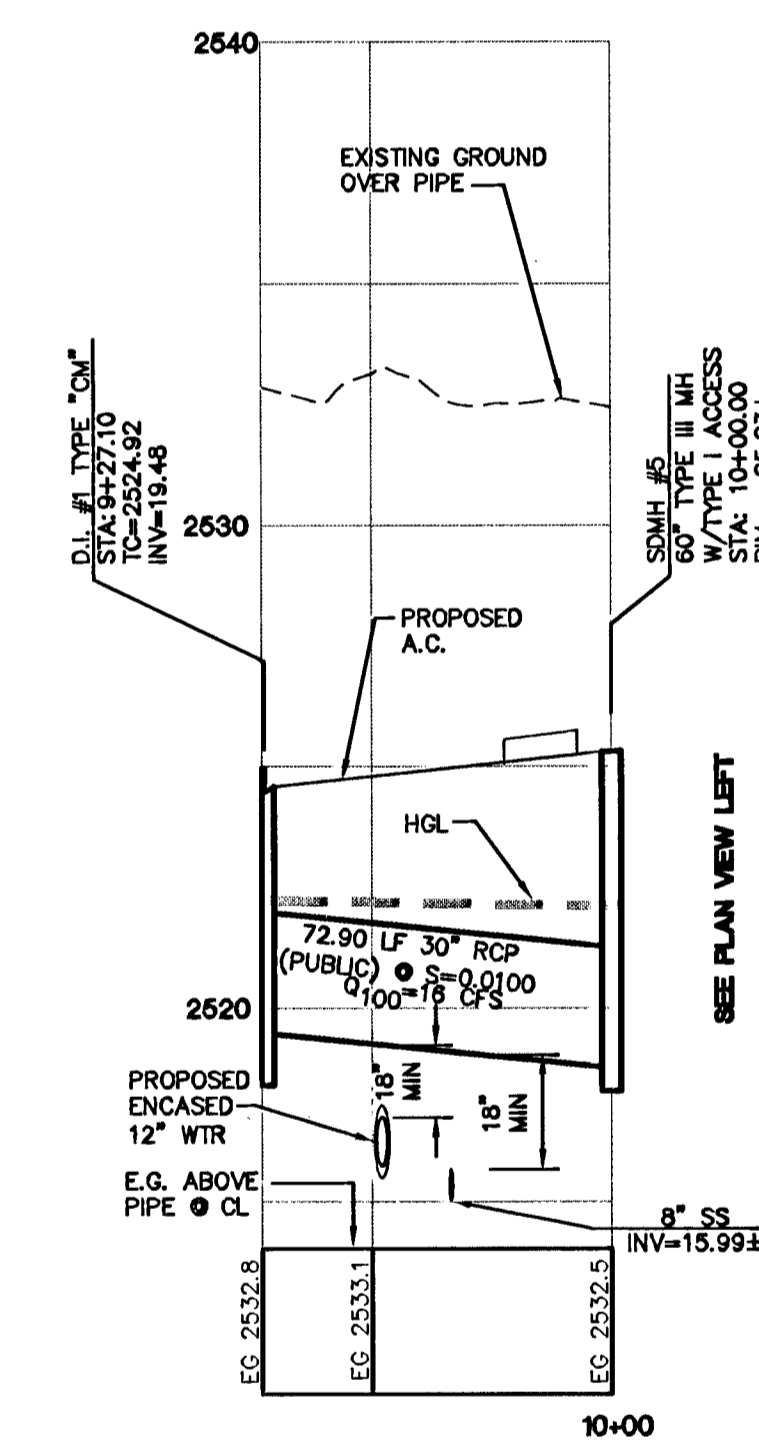
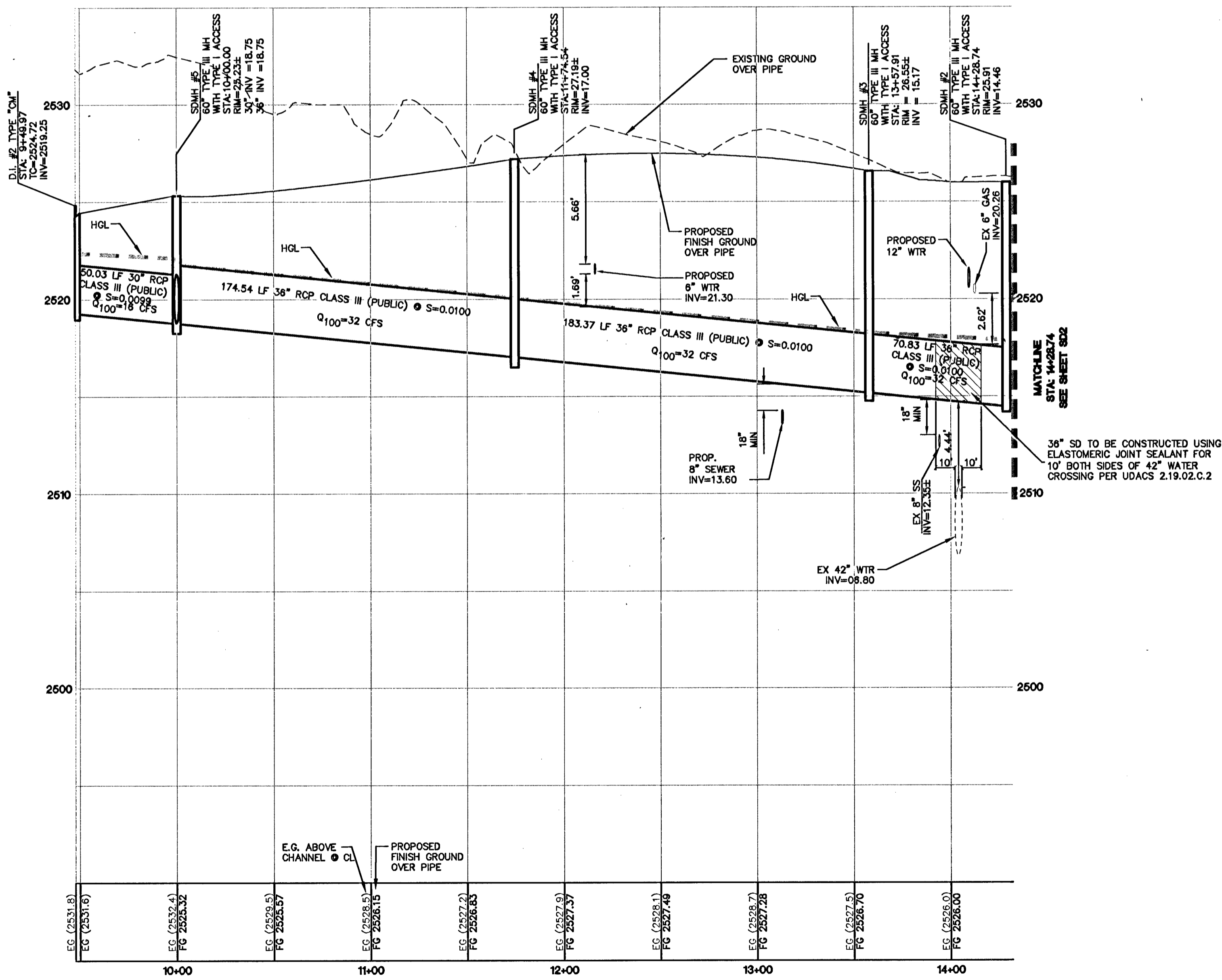
**GRAND MONTECITO PKWY
SOUTH STORM DRAIN
(PUBLIC)**
STA: 9+47.87 TO 14+28.74
HORIZONTAL 1"=40'
(SEE SHEETS WT1, UT1 & UT2)



**GRAND MONTECITO PKWY
SOUTH STORM DRAIN
(PUBLIC)**
STA: 9+38.84 TO 10+00.00
HORIZONTAL 1"=40'
(SEE SHEETS WT2, UT2)

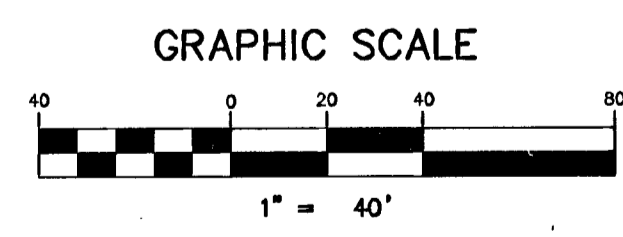


**KEY MAP
N. T. S.**



STORM DRAIN NOTE

1. ALL STORM DRAIN STATIONING IS BASED ON CENTER OF PIPE LENGTHS FROM MANHOLE TO MANHOLE AND IS NOT RELATIVE IN ANY WAY TO STREET CENTERLINE STATIONING. STREET CENTERLINE STATIONING IS SHOWN ON PLAN FOR ROAD REFERENCE ONLY.
2. ALL MANHOLES ARE 60" SIZED MANHOLES PER STD. DWG# SD-1, UNLESS OTHERWISE NOTED ON PLAN.
3. ALL FLOOD CONTROL FACILITIES OUTSIDE OF PUBLIC RIGHT-OF-WAY, ARE TO BE PRIVATELY MAINTAINED.



PRIVATE FLOOD CONTROL IMPROVEMENT	QUANTITY
18" STORM DRAIN	52 LF
24" STORM DRAIN	104 LF
30" STORM DRAIN	123 LF
36" STORM DRAIN	841 LF
4" TYPE "C" DROP INLET	4 EA
8" X 5' RCB	285 LF
RIP RAP	69 CY
GROUTED RIP RAP	78 CY
60" TYPE III STORM DRAIN MAN HOLES	5 EA
N.D.O.T RCP END SECTION R-2.3.1	1 EA

ALL DRAINAGE IMPROVEMENTS WITH PUBLIC DRAINAGE EASEMENT MUST BE BONDED AND INSPECTED. SEE STRUCTURAL PLANS FOR HEADWALL AND ADDITIONAL QUANTITIES.

PRIVATE FLOOD CONTROL IMPROVEMENT QUANTITY

19" STORM DRAIN 52 LF
24" STORM DRAIN 104 LF
30" STORM DRAIN 123 LF
36" STORM DRAIN 841 LF
4" TYPE "C" DROP INLET 4 EA
8" X 5' RCB 285 LF
RIP RAP 69 CY
GROUTED RIP RAP 78 CY
60" TYPE III STORM DRAIN MAN HOLES 5 EA
N.D.O.T RCP END SECTION R-2.3.1 1 EA

PRIVATE FLOOD CONTROL IMPROVEMENT QUANTITY

19" STORM DRAIN 52 LF
24" STORM DRAIN 104 LF
30" STORM DRAIN 123 LF
36" STORM DRAIN 841 LF
4" TYPE "C" DROP INLET 4 EA
8" X 5' RCB 285 LF
RIP RAP 69 CY
GROUTED RIP RAP 78 CY
60" TYPE III STORM DRAIN MAN HOLES 5 EA
N.D.O.T RCP END SECTION R-2.3.1 1 EA

PRIVATE FLOOD CONTROL IMPROVEMENT QUANTITY

19" STORM DRAIN 52 LF
24" STORM DRAIN 104 LF
30" STORM DRAIN 123 LF
36" STORM DRAIN 841 LF
4" TYPE "C" DROP INLET 4 EA
8" X 5' RCB 285 LF
RIP RAP 69 CY
GROUTED RIP RAP 78 CY
60" TYPE III STORM DRAIN MAN HOLES 5 EA
N.D.O.T RCP END SECTION R-2.3.1 1 EA

BENCHMARK:
PROJECT DATUM: NORTH AMERICAN VERTICAL DATUM OF 1988
BENCHMARK: CITY OF LAS VEGAS BENCH 8LV90 2068
ELEVATION: 775.1977 METERS (2543.29) RIVET AND PLATE IN CONCRETE CYLINDER NW CORNER DEER SPRINGS AND RILEY

BASIS OF BEARINGS:
THE BASIS OF BEARINGS FOR THIS PROJECT IS NORTH 89°58'20" EAST, BEING THE SOUTH LINE OF THE SOUTHEAST QUARTER (SE 1/4) OF THE NORTHEAST QUARTER (NE 1/4) OF SECTION 20, TOWNSHIP 19 SOUTH, RANGE 60 EAST, M.D.M., CLARK COUNTY, NEVADA, AS SHOWN ON A RECORD OF SURVEY RECORDED IN THE CLARK COUNTY, NEVADA, RECORDER'S OFFICE IN FILE 118 AT PAGE 89.

CONTRACTOR NOTE:
CONTRACTOR SHALL VERIFY HORIZONTAL AND VERTICAL LOCATION OF EXISTING UTILITIES AND NOTIFY THE DESIGN ENGINEER IMMEDIATELY OF ANY DISCREPANCIES PRIOR TO CONSTRUCTION.

Call before you Overhead
1-702-227-2929

Call before you Dig
1-800-227-2600

Underground
1-702-465-7511
CLARK COUNTY TRAFFIC OPERATIONS
1-702-229-8611
LAS VEGAS AREA COMPUTERS - TRAFFIC SYSTEM

LAS VEGAS VALLEY WATER DISTRICT APPROVAL
APPROVED BY: [Signature]
DATE: 12-18-07

TRIPLE FIVE NEVADA DEVELOP. CP.
CITY OF LAS VEGAS
2727 SOUTH RAINBOW BOULEVARD
LAS VEGAS, NEVADA 89146-5146
PH. (702) 875-7550 FAX (702) 362-2987 WEB WWW.TFNVC.COM
LAS VEGAS, NEVADA 89117
(702) 430-5900

STORM DRAIN PLAN & PROFILE
GRAND MONTECITO PKWY (SOUTH)
STAS: 9+47.87-14+28.74 & STAS: 9+38.84-10+00.00

THE GREAT MALL
GRAND MONTECITO &
DEER SPRINGS IMPROVEMENTS

DRAWN BY: [Signature] APRIL 2007
DESIGNED BY: [Signature] APRIL 2007
CHECKED BY: [Signature] JUNE 2007
PROJECT NO: 5355
SCALE: 1"=40' HORIZ.
1"=4' VERT.

SHEET
SD1
18 OF 31 SHEETS
DRAWING NO.
107Y4966-05

110532 U2185

11/08/07