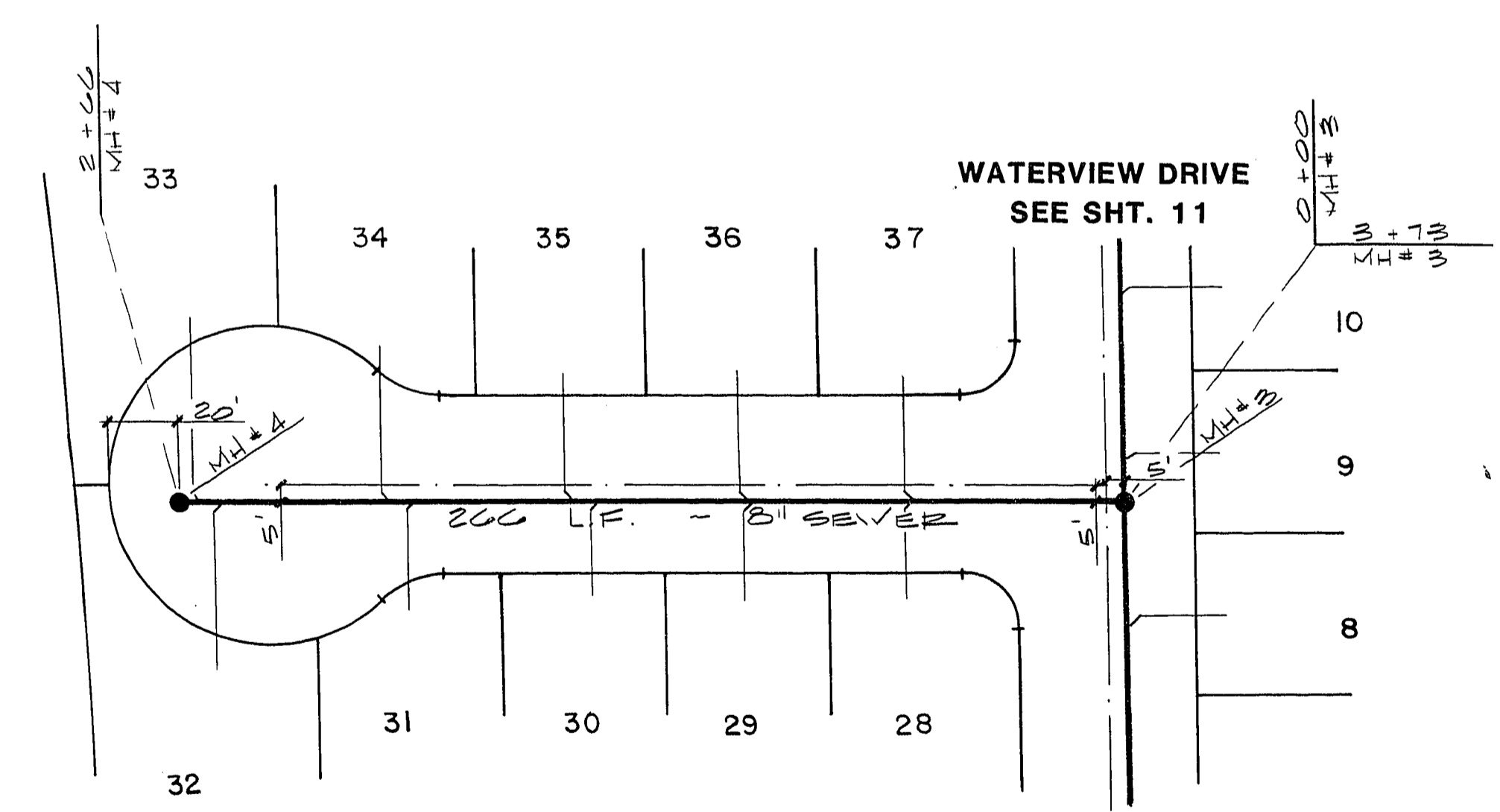
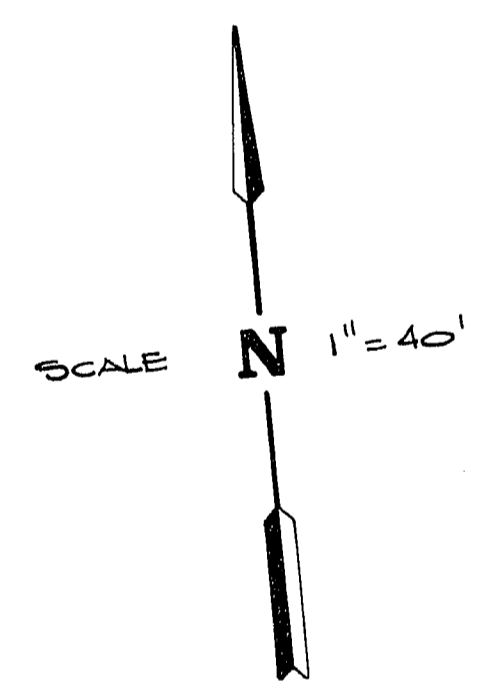
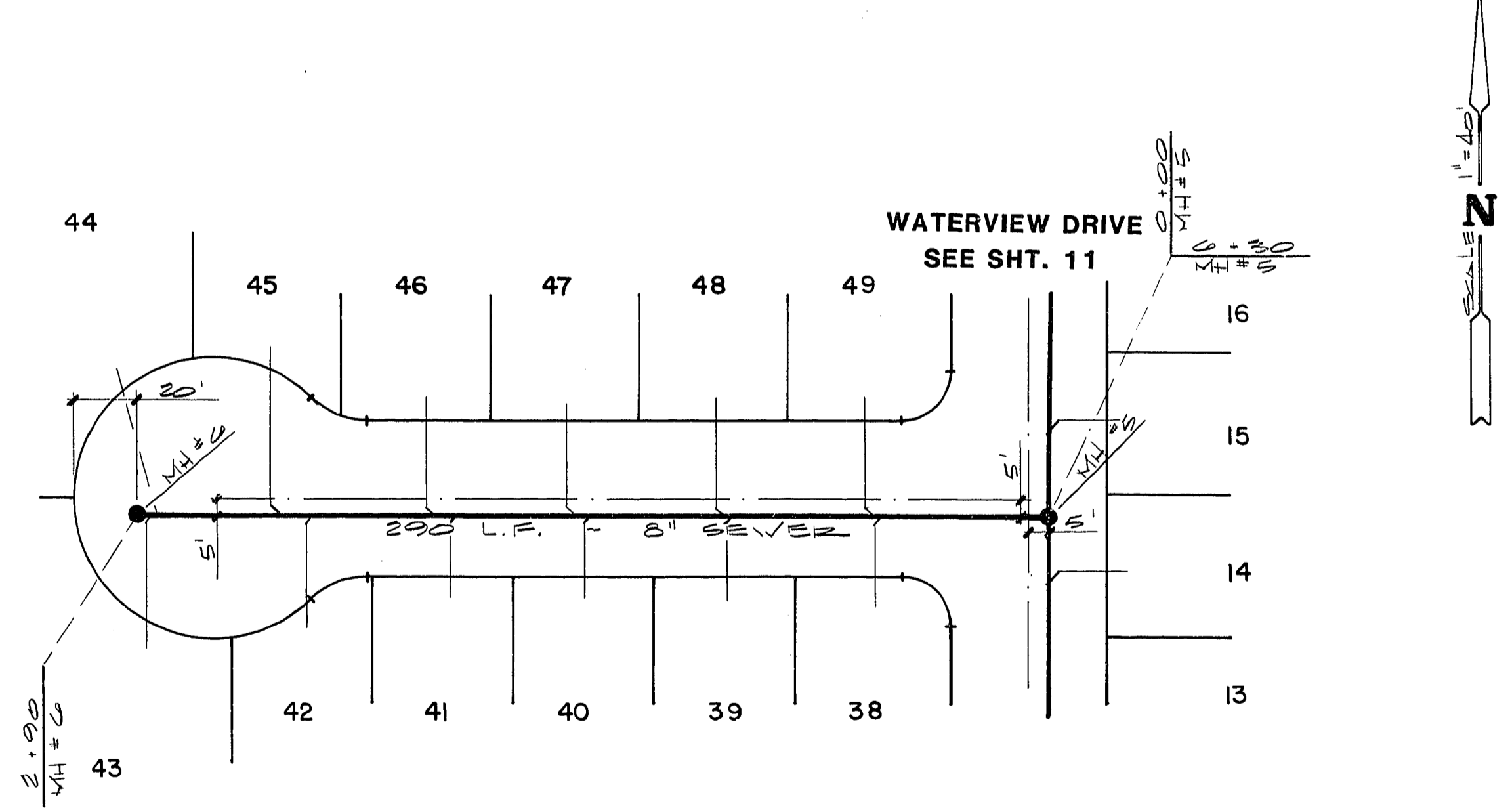


REVISION					
BY					
DATE					
REV					

ENGINEERS & SURVEYORS INCORPORATED
 7022 W. CHARLESTON BLVD.
 LAS VEGAS, NEVADA 89117
 PHONE: 702 / 363-6415
 SUBMITTED BY: *Paul E. Waparie*
 STATE OF NEVADA
 PAUL E. WAPARIE
 LICENSE NO. 9316



PEBBLE SHORE COURT



CAPE WOOD COURT

TITLE
SEWER PLAN & PROFILE
 (PEBBLE SHORE COURT & CAPE WOOD COURT)

PROJECT
THE BLUFFS UNIT NO. 7A

WO NO.	860202
BY	B. L. G.
DATE	2-26-86
SCALE	VERT 1" = 4' HORIZ 1" = 40'

SHEET
 11
 OF 13 SHEETS

Paul E. Waparie
 C. L. V. SANITATION ENGINEER

5-9-86
 DATE

19. 6-120 3074-911-7A