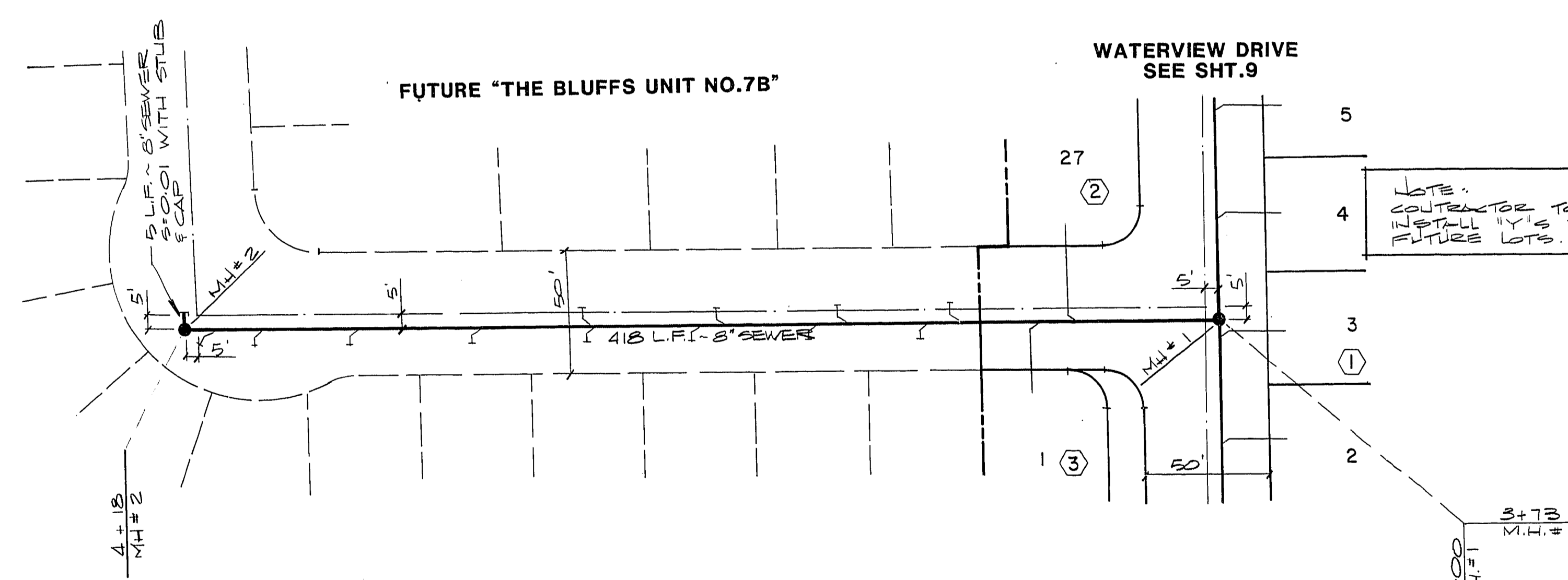


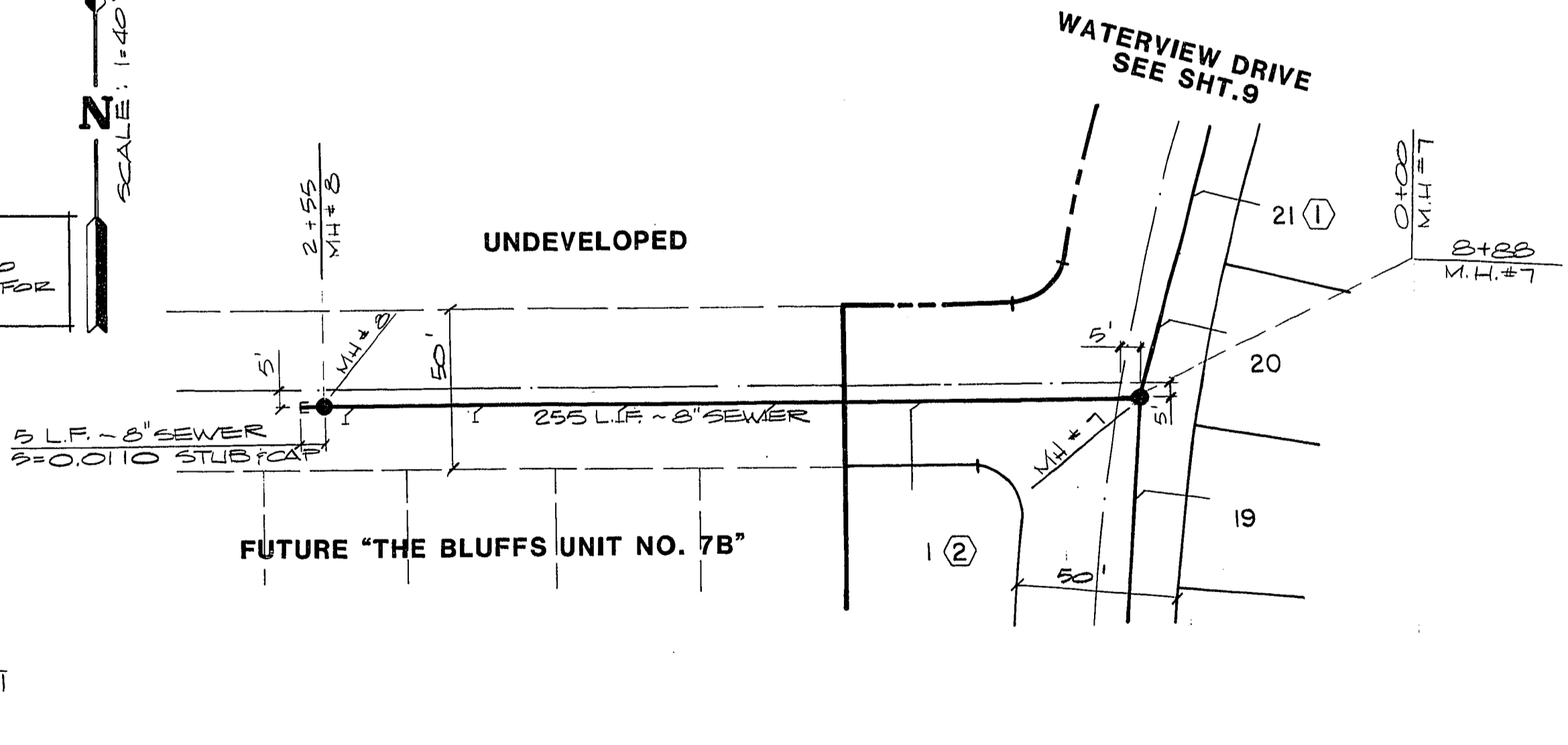
5+00 4 3 2 1 0+00 3 2 1 0+00

N
SCALE: 1"=40'



CRYSTAL GLASS DRIVE

N
SCALE: 1"=40'



SOFT SAND DRIVE

REV	DATE	BY	REVISION

ENGINEERS & SURVEYORS INCORPORATED
7022 W. CHARLESTON BLVD.
LAS VEGAS, NEVADA 89117
PHONE: 702 / 363-6415

SUBMITTED BY: PAUL E. VALENTE
PAUL E. VALENTE
REGISTERED PROFESSIONAL ENGINEER
STATE OF NEVADA
No. 12986

TITLE
SEWER PLAN & PROFILE
(CRYSTAL GLASS DRIVE & SOFT SAND DRIVE)

PROJECT
THE BLUFFS UNIT NO. 7A

WO NO. 860202
BY P. CHAO
DATE 2-26-86
SCALE VERT: 1"=4'
HORIZ: 1"=40'

SHEET
10
OF 13 SHEETS

C.L.V. SANITATION ENGINEER
DATE 5-9-86

19-6-119 3074-911-7A