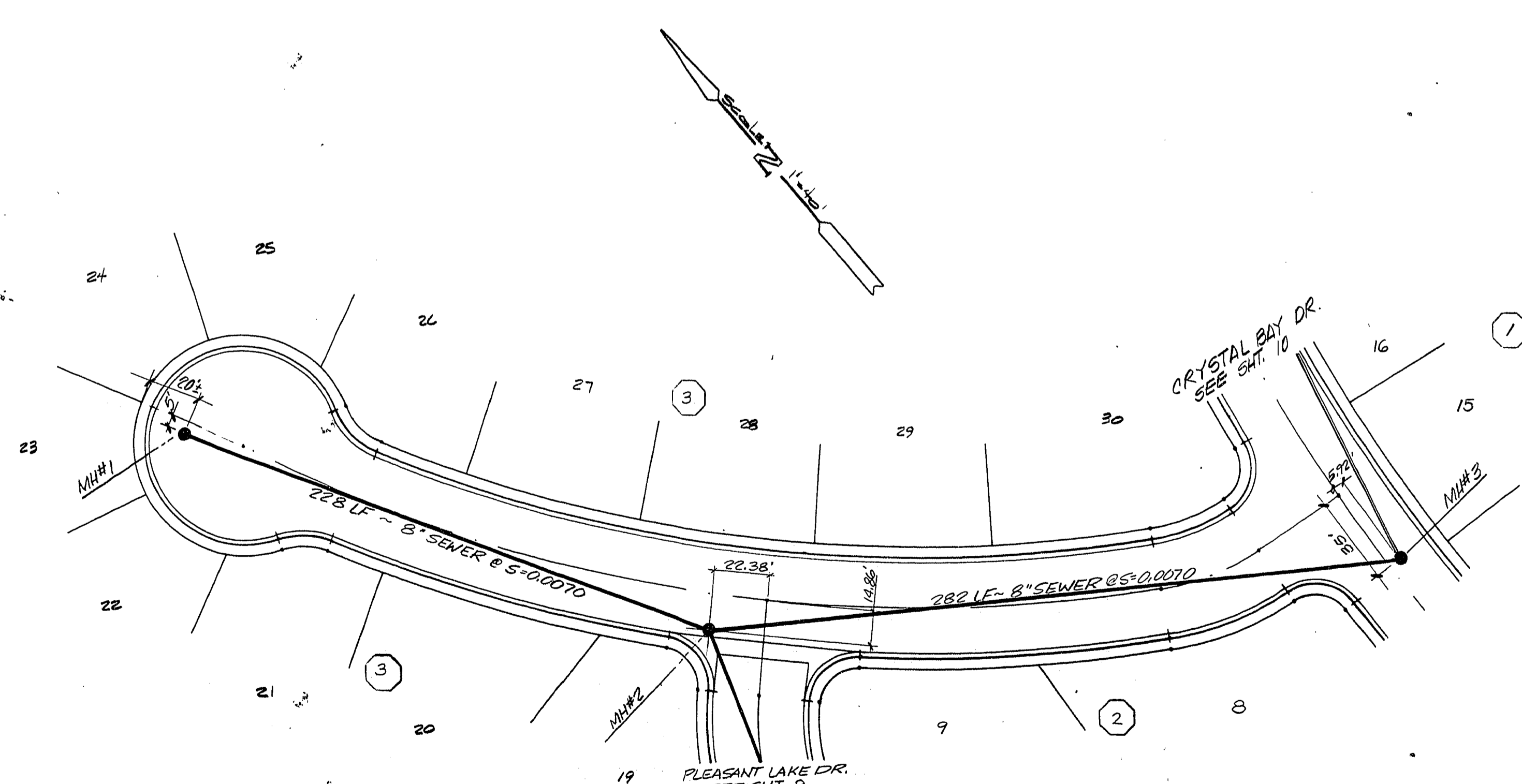


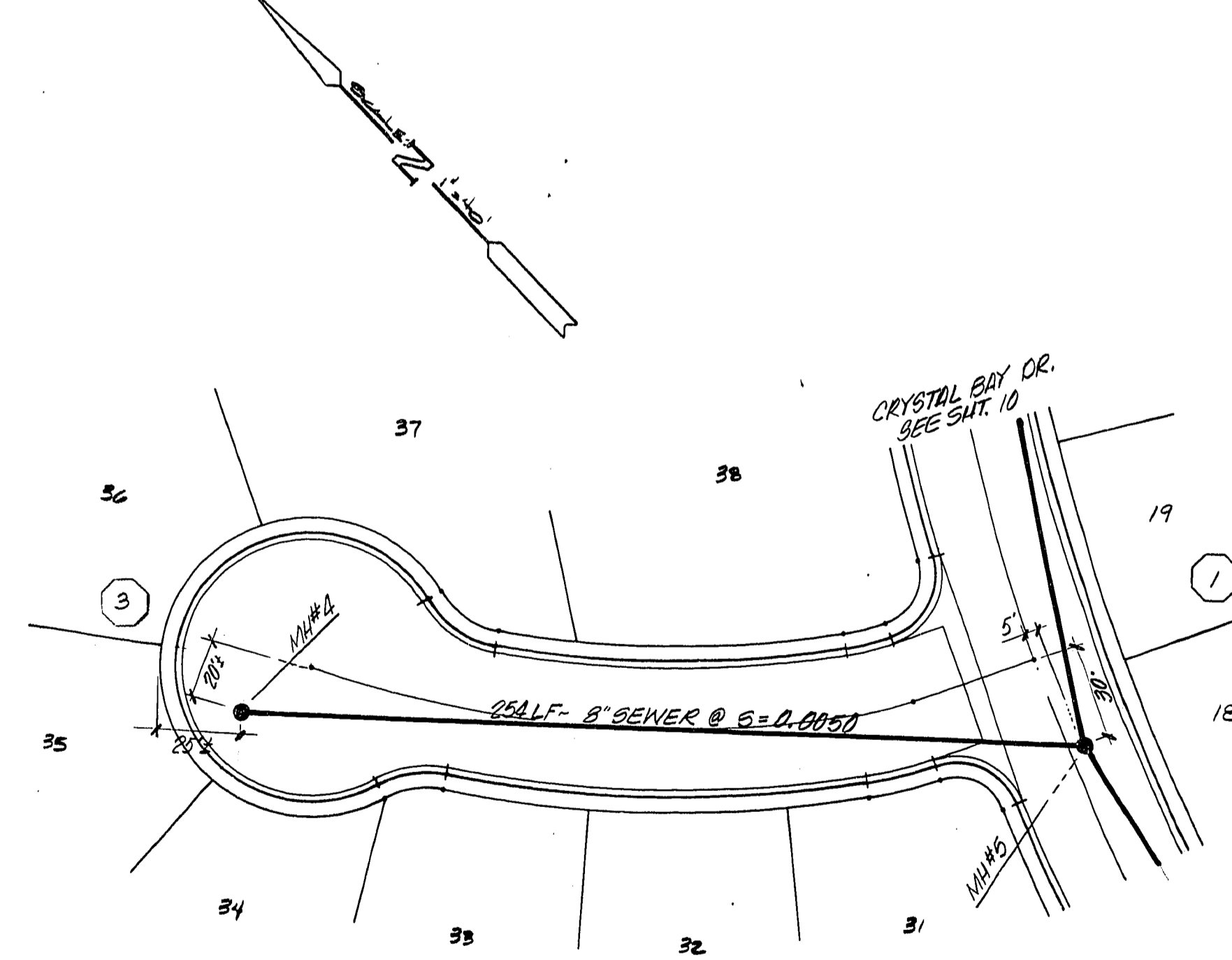
REVISION	DATE	BY
MHP # RELOCATED	2/24/85	DJR
CORR. PER CLV REVIEW	2/24/85	DJR

ENGINEERS & SURVEYORS INCORPORATED
 7022 W. CHARLESTON BLVD.
 LAS VEGAS, NEVADA 89117
 PHONE: 702 / 363-6415

SUBMITTED BY: *Paul E. Valentin*
 2/18/85



CRYSTAL COVE DRIVE



BLUFF COVE CIRCLE

TITLE
SEWER PLAN & PROFILE
 CRYSTAL COVE DR. & BLUFF COVE CIR.

PROJECT
THE BLUFFS UNIT NO. 3

WO NO.	841201
BY	P. VALENTINE
DATE	2/85
SCALE	1" = 40'

APPROVAL

P. Valentin
 CLV SANITATION ENGINEER

3-25-85

DATE

SHEET	11
OF 13 SHEETS	