

| REV | DATE | BY | REVISION |
|-----|---------|-----|---|
| 1 | 2/24/85 | LDK | MANHOLE RELOCATED, MANHOLE # 18 L.F. 8" |
| 2 | 2/24/85 | LDK | SEWER ADDED |
| 3 | | | CORR. PER CLV REVIEW |

ENGINEERS & SURVEYORS INCORPORATED
 7022 W. CHARLESTON BLVD.
 LAS VEGAS, NEVADA 89117
 PHONE: 702 / 363-6415

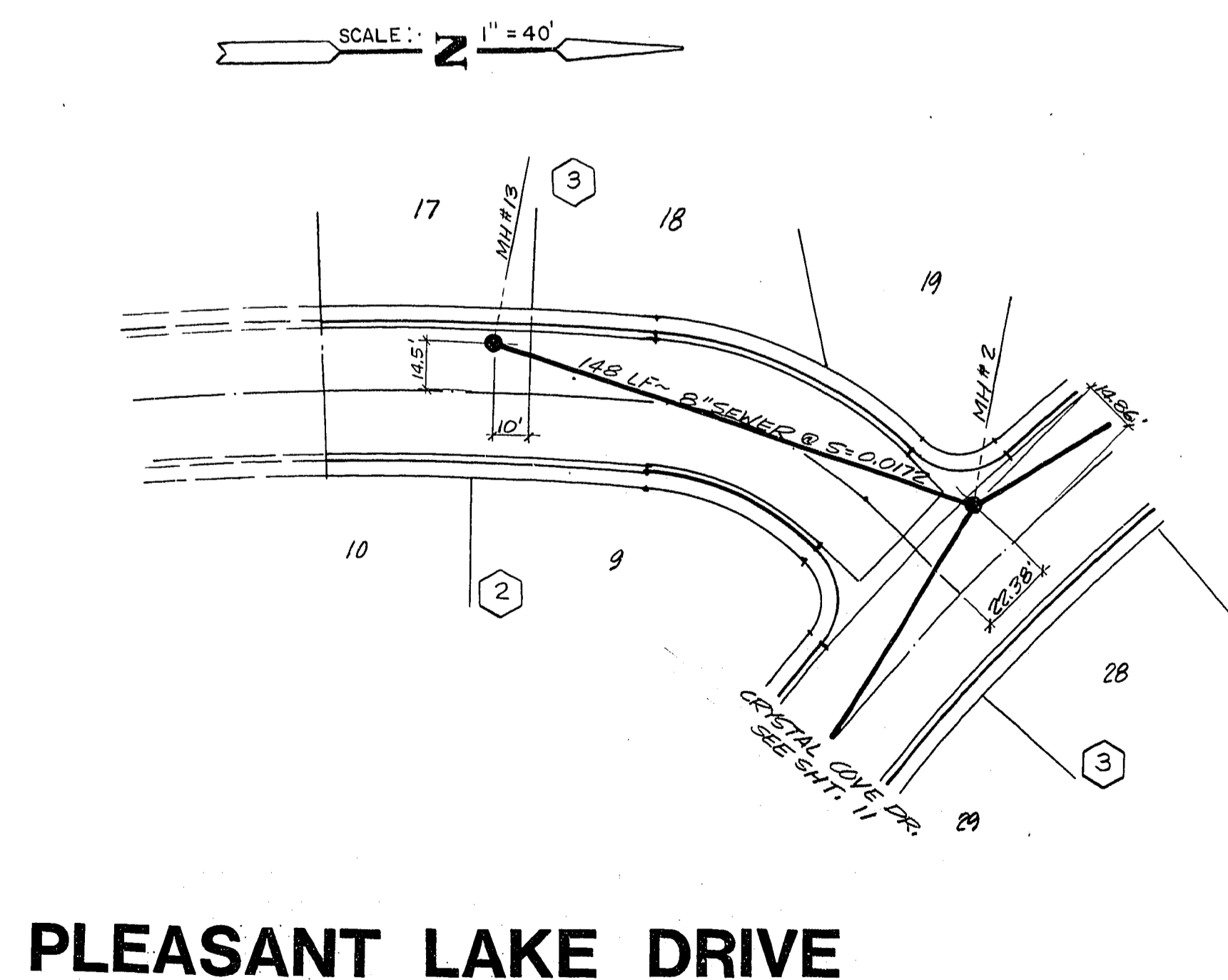
SUBMITTED BY: *Paul E. Valentine*
 2/15/85

TITLE: SEWER PLAN & PROFILE
 PLEASANT LAKE DR. & LAKE NORTH DR.

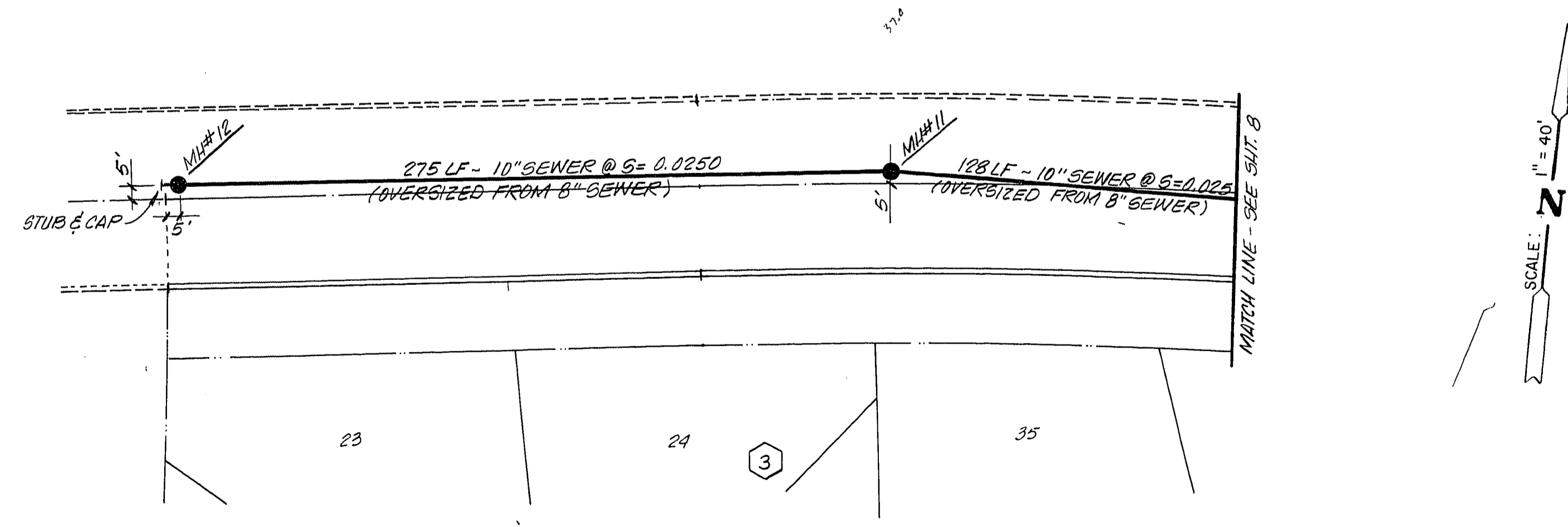
PROJECT: THE BLUFFS UNIT NO. 3

WO NO. 841201
 BY P. VALENTINE
 DATE 2/85
 SCALE 1" = 40'

SHEET 9
 OF 13 SHEETS



PLEASANT LAKE DRIVE



LAKE NORTH DRIVE

APPROVAL

P. Valentine
 CLV SANITATION ENG'R. DATE 2-25-85

19-6-190 3074-911-3