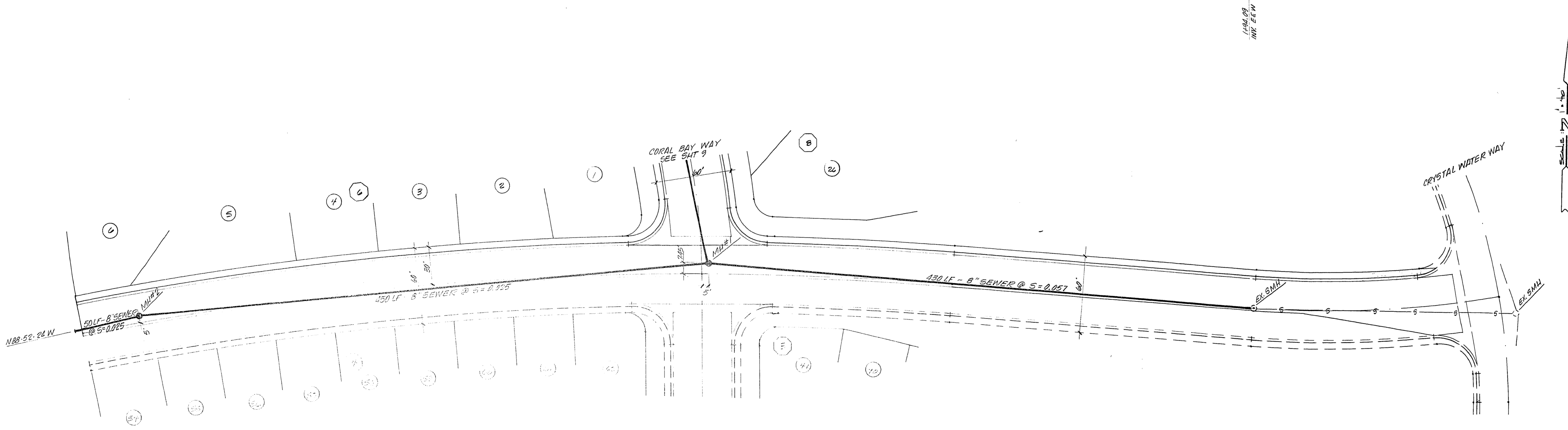


REV	DATE	BY	REVISION

ENGINEERS & SURVEYORS INCORPORATED
 7022 W. CHARLESTON BLVD.
 LAS VEGAS, NEVADA 89117
 PHONE 702 / 363-6415
 SUBMITTED BY: *Paul E. Valentine*



MARINER COVE DRIVE

APPROVALS

P. Valentine
 CLV SANITATION ENGINEER

TITLE: SEWER PLAN & PROFILE
 PROJECT: MARINER COVE DRIVE
THE BLUFFS UNIT NO. 1

WO NO.	841201-1
BY	P. VALENTINE
DATE	12/17/84
SCALE	HOR. 1" = 40' VERT. 1" = 4'

SHEET: **8**
 OF 13 SHEETS

19-6-518 3074-911-1