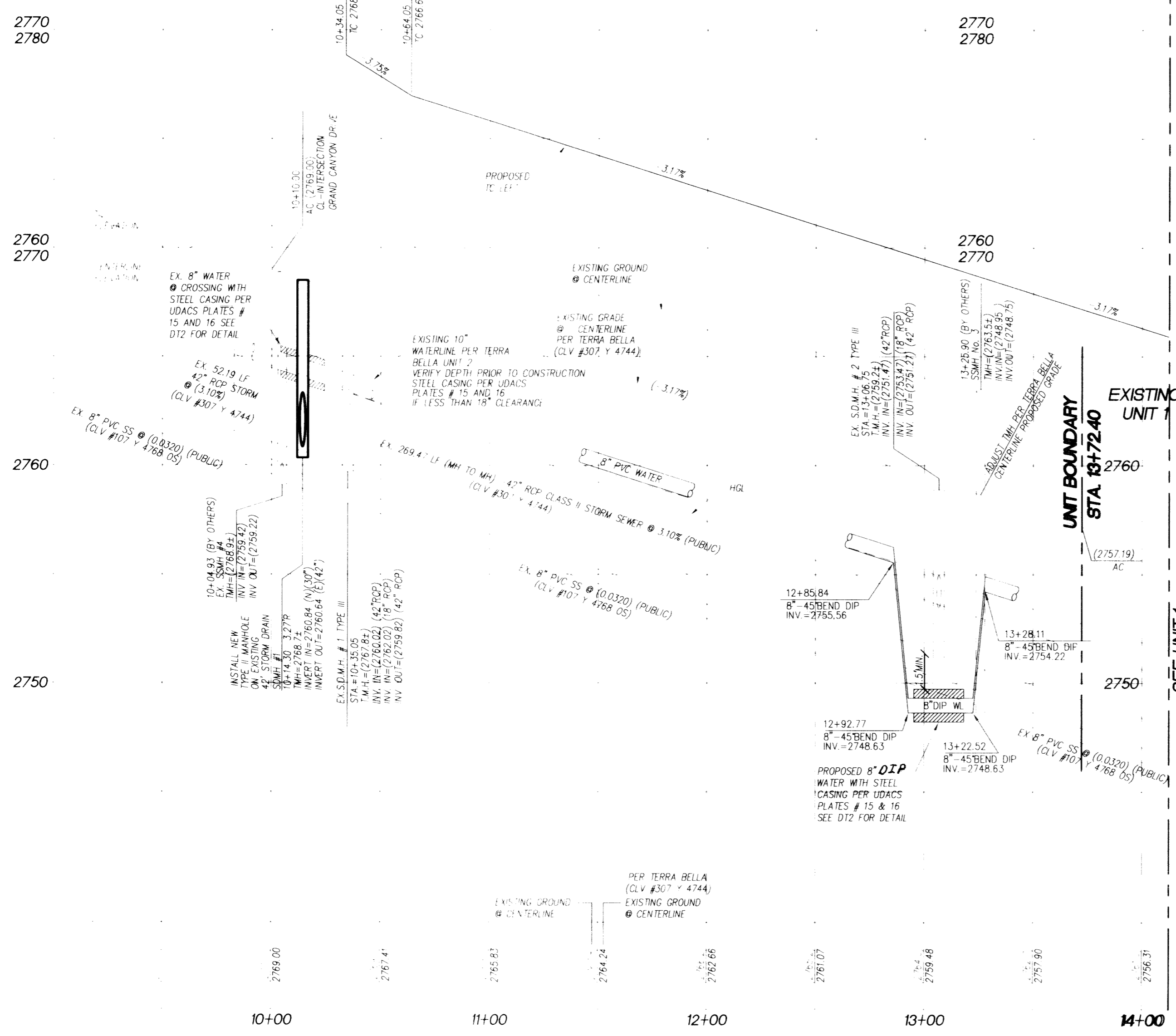
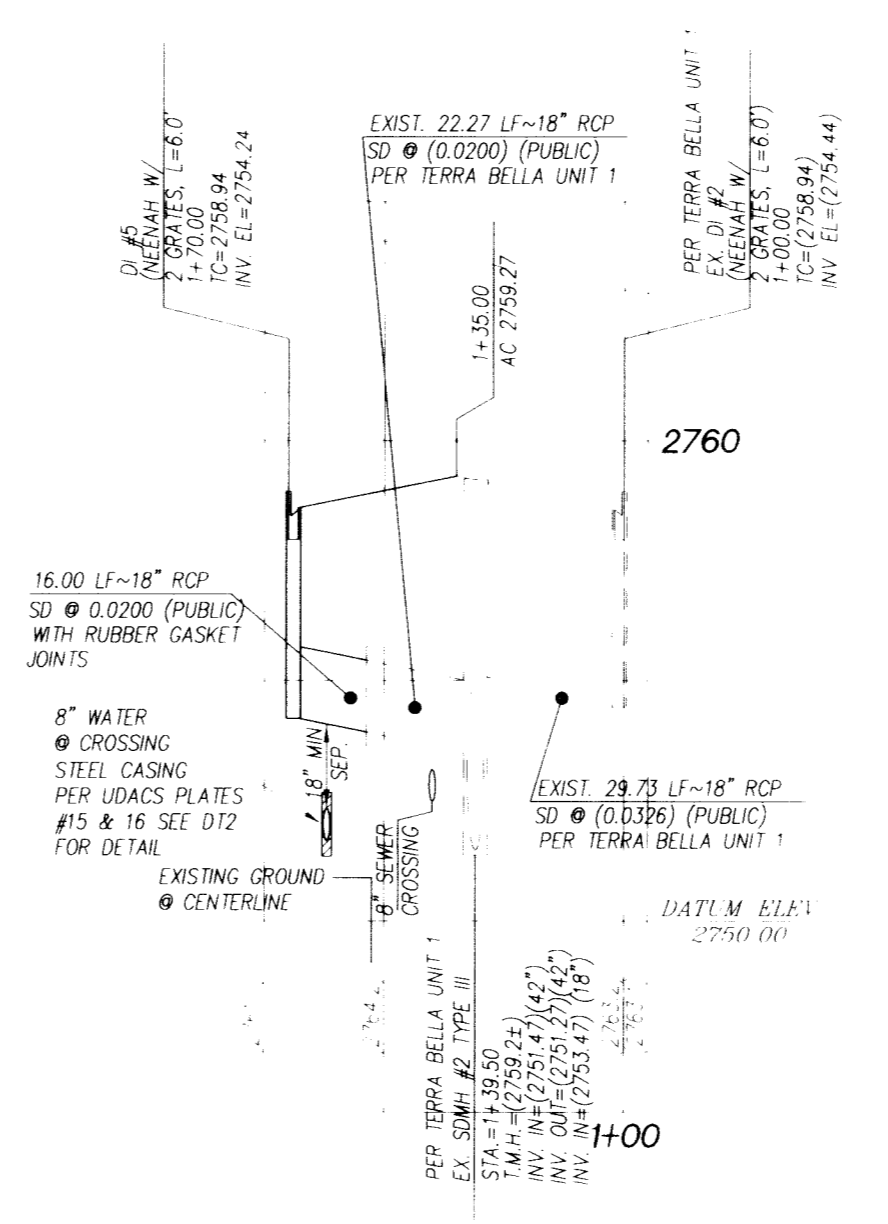


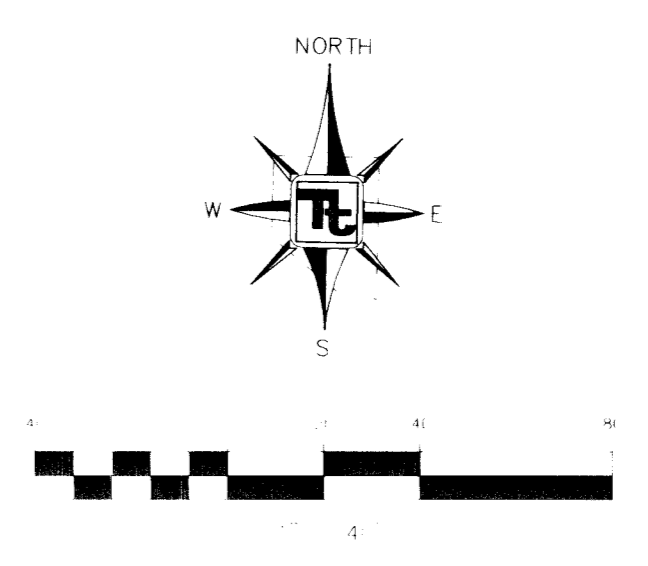
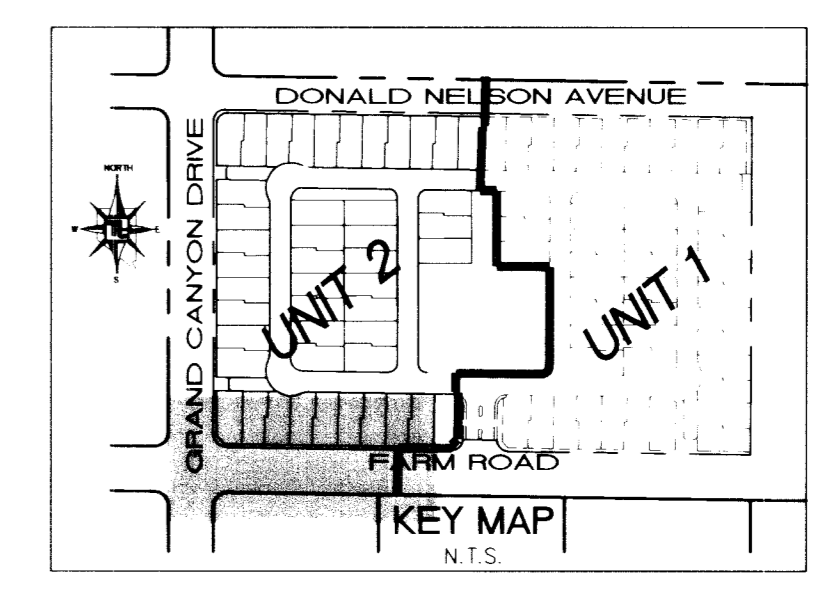
FARM ROAD
(PUBLIC STREET)
HORIZONTAL: 1"=40'
VERTICAL: 1"=4'



INSTALL WATERLINE IN STEEL CASING PER UDACS PLATE NO. 15 AND 16. MINIMUM 18-INCH CLEARANCE IS REQUIRED ABOVE THE TOP OF THE CASING FROM THE UPPER BENDS THROUGHOUT THE LOWERED SECTION OF PIPE. DUCTILE IRON PIPE WITH RESTRAINED JOINTS IS REQUIRED. IN ADDITION, THRUST BLOCKS ARE TO BE INSTALLED AT THE UPPER BENDS.



DI #5 - LATERAL
HORIZONTAL SCALE: 1"=40'
VERTICAL SCALE: 1"=4'



LEGEND

- MATCHLINE
- PROPERTY LINE / RIGHT-OF-WAY
- "L" TYPE CURB AND GUTTER
- CROSS GUTTER
- WHEELCHAIR RAMP
- CUT OR FILL SLOPE
- PROPOSED AC PAVEMENT AREA
- PROPOSED ELEVATION (DESCRIPTION AS SHOWN)
- EXISTING ELEVATION (DESCRIPTION AS SHOWN)
- EXISTING DESIGN ELEVATION (DESCRIPTION AS SHOWN)
- SLOPE
- DETAIL OF SECTION NUMBER SHEET DETAIL IS SHOWN
- BLOCK WALL
- RETAINING WALL
- LOT NUMBER
- PAD ELEVATION
- FINISHED FLOOR ELEVATION
- END OF ROAD MARKERS

H.C. RAMP DATA
PER STANDARD DRAWING 235

NO.	"A"	"B"	CASE
A	8.0'	8.0'	
B	4.5'	12.0'	
C	15.0'	4.5'	
D	12.0'	4.5'	
E			
F			

CONSTRUCTION NOTES

- 2) 80' PUBLIC R/W HALF STREET = 4" AC PAVING OVER 4.5" TYPE II BASE PER U.S.D.C.C.A. MODIFIED STANDARD DWG.
- 3) CONSTRUCT "L" CURB PER U.S.D.C.C.A. STANDARD DWG. NO. 216
- 6) CONSTRUCT 5' WIDE CONCRETE SIDEWALK PER U.S.D.C.C.A. STANDARD DRAWING NO. 234
- 8) CONSTRUCT SIDEWALK RAMP PER U.S.D.C.C.A. DWG. NO. 235. TRANSITIONS PER RAMP DATA TABLE.

CURVE TABLE

CURVE	LENGTH	RADIUS	TANGENT	DELTA
C7	46.68'	30.00'	29.56'	89°09'16"
C8	38.90'	25.00'	24.63'	89°09'16"

BENCHMARK

CITY OF LAS VEGAS BENCHMARK 2C90 20W4
REBAR #124 FT. NORTHEAST OF DEER SPRINGS AND FORT APACHE
ELEVATION = 806.867 METERS (NAVDBB) ELEVATION 2647.20 FEET (NAVDBB)

BASIS OF BEARING

BEARING SOUTH 00°13'40" EAST; BEING THE WEST LINE OF THE SOUTHWEST QUARTER (SW 1/4) OF THE NORTHWEST QUARTER (NW 1/4) OF SECTION 20, TOWNSHIP 19 SOUTH, RANGE 60 EAST, CLARK COUNTY, NEVADA, AS SHOWN ON FILE 25, PAGE 44 SURVEYS

Avoid cutting underground utility lines. It's costly.
Call before you Dig
1-800-227-2600
UNDERGROUND SERVICE (USA)

Avoid overhead power line contact.
Call before you Overhead
1-702-593-6111
NEVADA POWER CORPORATION SAFETY SERVICES DEPARTMENT

CALL BEFORE YOU DIG
UNDERGROUND
1-702-455-7511
CALL BEFORE YOU DIG
UNDERGROUND
1-702-229-6611

APPROVED FOR CONSTRUCTION

LAS VEGAS VALLEY WATER DISTRICT
(PROJECT #28869)

KIMBALL HILL HOMES
STREET PLAN AND PROFILE
FARM ROAD

TERRASANO UNIT 2
CITY OF LAS VEGAS

TETRA TECH, INC.
INTERNATIONAL CENTER SOUTH BAY
401 N. Buffalo Dr. Suite 100, Las Vegas, Nevada 89145 (702) 242-4200

PROFESSIONAL ENGINEER
NIT E
UNDERSTAND
CIVIL
1-29-04
PP1
7 15
10-184-197-07

P08719-0006