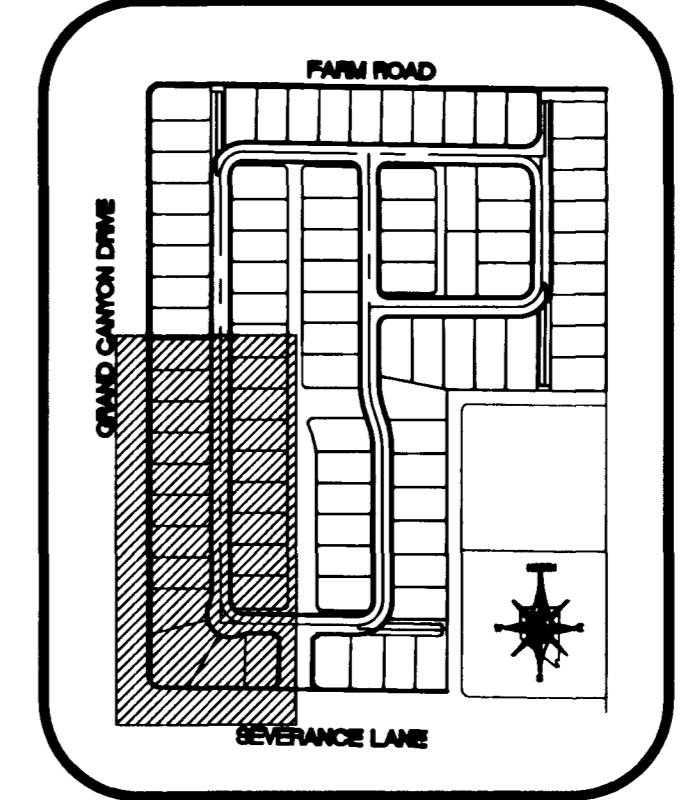
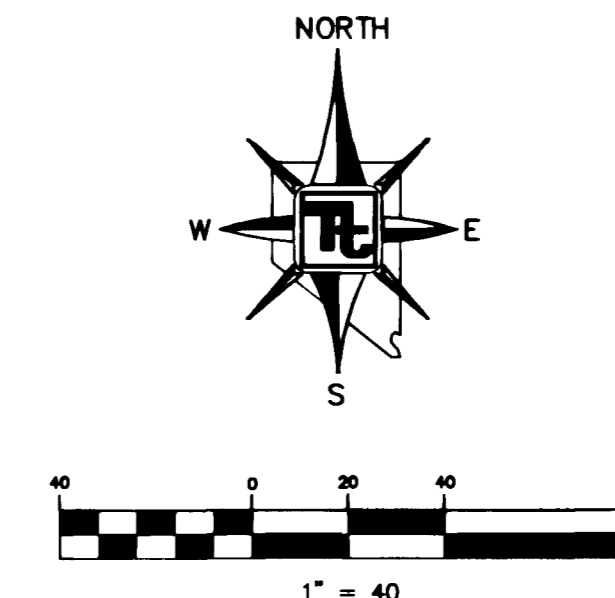
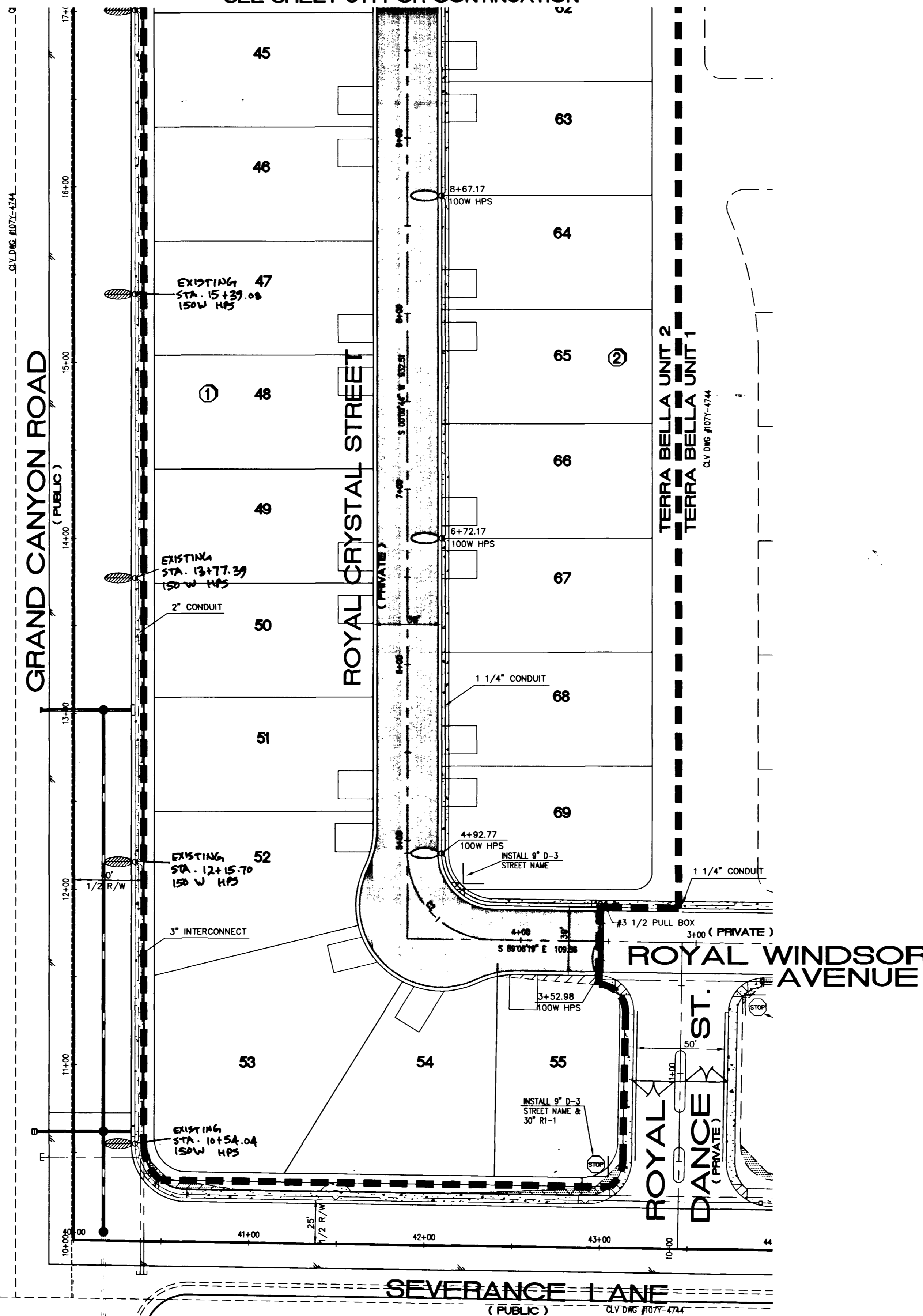


SEE SHEET UT1 FOR CONTINUATION

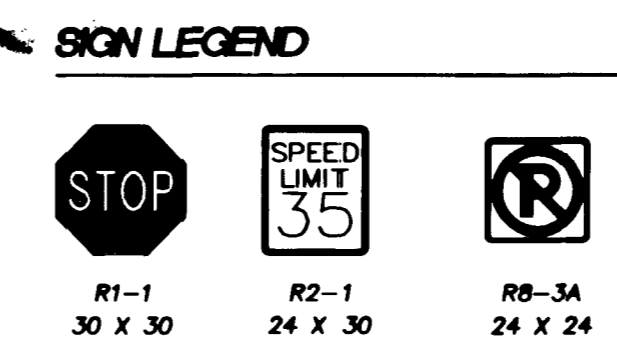


BENCHMARK
CITY OF LAS VEGAS BENCHMARK - 2090 - 20M
REBAR ±124 FT. NORTHEAST OF DEER SPRINGS AND FORT APACHE.
ELEVATION = 806.867 METERS (NAVDS88)
ELEVATION = 2647.20 FEET (NAVDS88)

BASIS OF BEARING
BEARING NORTH 00°37'43" EAST, BEING THE EAST LINE OF THE SOUTHEAST QUARTER (SE 1/4) OF THE NORTHEAST QUARTER (NE 1/4) OF SECTION 18, TOWNSHIP 19 SOUTH, RANGE 80 EAST, M.D.M., CITY OF LAS VEGAS, CLARK COUNTY, NEVADA, AS SHOWN ON FILE 114, PAGE 17 OF SURVEYS.

- UTILITY NOTE**
1. NOTIFY TETRA TECH, INC. IMMEDIATELY OF ANY DISCREPANCIES IN THE PLAN OR CONDITIONS IN THE FIELD.
 2. PRIOR TO CONSTRUCTION THE CONTRACTOR SHALL LOCATE AND VERIFY SIZE, MATERIAL DEPTH, CONDITION, PRESSURE AND LOCATION OF ALL EXISTING UTILITY LINES WITHIN THE CONSTRUCTION AREA. TETRA TECH, INC. SHALL BE CONTACTED ONCE THE UTILITY IS LOCATED.
 3. PLANS MAY NOT INDICATE ALL EXISTING UTILITY LINES. CONTRACTOR IS TO EXERCISE EXTREME CAUTION DURING EXCAVATION IN ORDER TO AVOID DAMAGING ANY EXISTING UTILITY LINES. IF THE UTILITY LINES ARE DAMAGED BY THE CONTRACTOR, SUCH DAMAGE SHALL BE REPAIRED TO THE SATISFACTION OF THE OWNER AT THE CONTRACTOR'S EXPENSE.
 4. CONTRACTOR TO SAWCUT AND REMOVE EXISTING ASPHALT AND CONCRETE AS NECESSARY FOR UTILITY TRENCHES. BACKFILL AND PATCH ALL TRENCHES ACCORDING TO CITY OF LAS VEGAS STANDARDS.
 5. ALL WATER SERVICE LINES AND METERS SHALL BE INSTALLED PER LAS VEGAS VALLEY WATER DISTRICT STANDARDS AND SPECIFICATIONS.
 6. CONTRACTOR TO FIELD VERIFY LOCATION AND INVERT OF MANHOLE PRIOR TO CONSTRUCTION. TETRA TECH, INC. SHALL BE CONTACTED ONCE THIS INFORMATION HAS BEEN OBTAINED.

- LEGEND**
- PROPOSED 400W HPS STREETLIGHT
 - PROPOSED 250W HPS STREETLIGHT
 - PROPOSED 200W HPS STREETLIGHT
 - PROPOSED 150W HPS STREETLIGHT
 - PROPOSED 100W HPS STREETLIGHT
 - EXISTING STREETLIGHT
 - PROPOSED STREETLIGHT SERVICE POINT
 - PROPOSED 3 1/2 PULLBOX
 - PROPOSED STREETLIGHT CONDUIT
 - BLOCK NUMBER



STREETLIGHT QUANTITIES

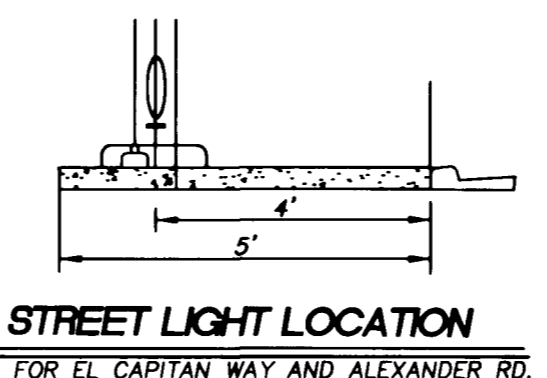
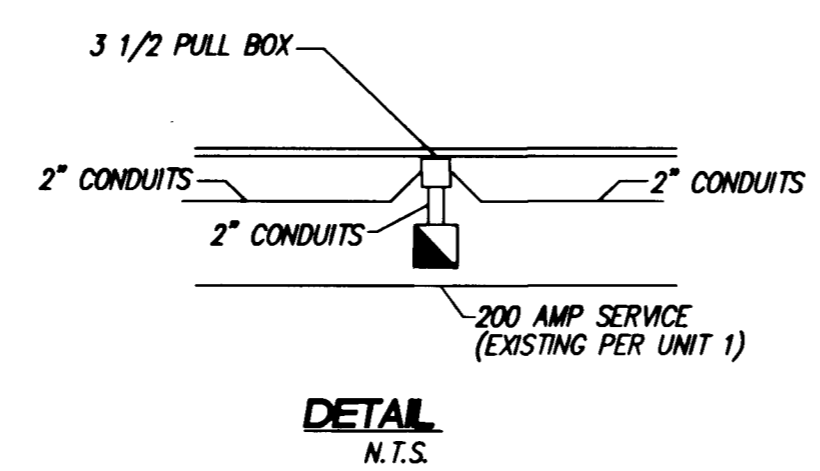
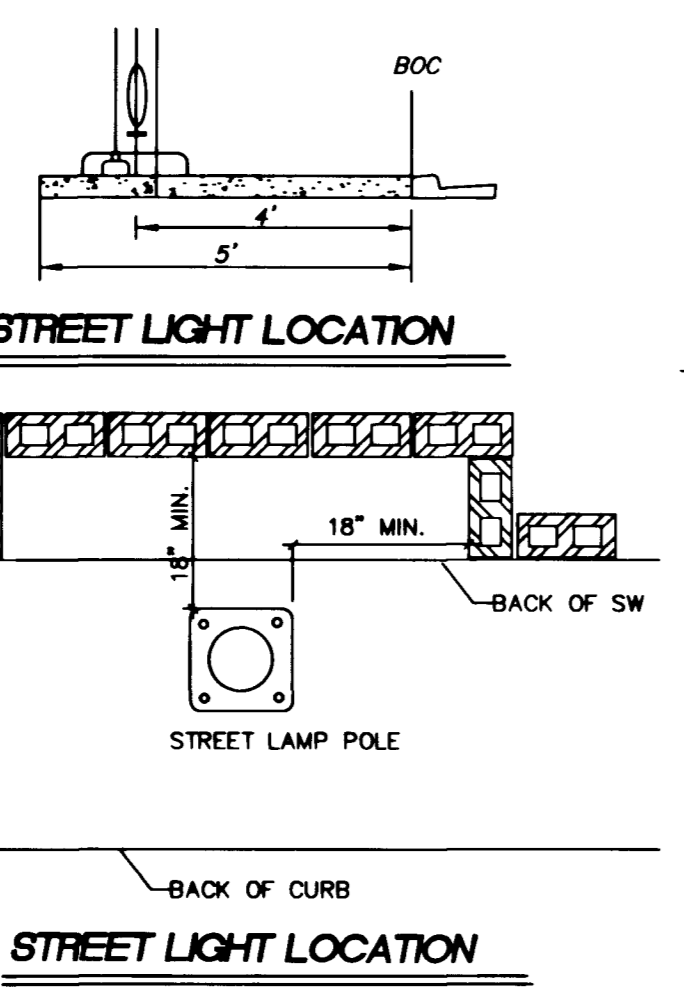
100 W HPS STREETLIGHT (PRIVATE)	7 EA
# 5 PULLBOX	1 EA
3-1/2 PULLBOX	4 EA
1 1/4" STREETLIGHT CONDUIT	3479 LF
200 AMP SERVICE POINT	0 EA
125 AMP SERVICE POINT (PRIVATE)	0 EA

STREETLIGHT NOTE:
ALL HAND HOLE COVERS MUST BE INSTALLED, POLE CAPS POURED, AND PULL BOX LIDS BOLTED DOWN PRIOR TO ENERGIZING CIRCUIT. ALL WIRE MUST HAVE THW INSULATION.

NOTES:
ALL STREETLIGHT, TRAFFIC SIGNAL, AND DRY UTILITY CONDUITS ARE TO BE INSTALLED UNDER SIDEWALK.
TRAFFIC LUMINAIRES ARE TO BE WIRED CONTINUOUSLY TO METER PEDESTAL USING 2-#10 STR. AND 1-#6 GREEN T.H.W. WIRE. 10' OF SLACK SHALL BE LEFT IN POLE. EACH LUMINAIRE SHALL BE FUSED INDIVIDUALLY WITH A 10 AMP FUSE IN BOTTOM OF METER PEDESTAL.

CURVE TABLE

C1 Δ=90°51'38"	R=49.50'	L=78.50	T=50.25
C2 Δ=89°09'04"	R=49.50'	L=77.02	T=48.77



DISCLAIMER NOTE:
UTILITY LOCATION SHOWN HEREON ARE APPROXIMATE ONLY. IT SHALL BE THE CONTRACTOR'S RESPONSIBILITY TO DETERMINE THE EXACT HORIZONTAL AND VERTICAL LOCATION OF ALL EXISTING UNDERGROUND AND OVERHEAD UTILITIES PRIOR TO COMMENCING CONSTRUCTION. NO REPRESENTATION IS MADE THAT ALL EXISTING UTILITIES ARE SHOWN HEREON. THE ENGINEER ASSUMES NO RESPONSIBILITY FOR UTILITIES NOT SHOWN OR UTILITIES NOT SHOWN IN THEIR PROPER LOCATIONS. NOTIFY ENGINEER IMMEDIATELY IF DISCREPANCIES ARE ENCOUNTERED.

Avoid cutting underground utility lines. It's costly.

Call before you Dig
1-800-227-2600
NEVADA UNDERGROUND SERVICE (USA)

Avoid overhead power line contact.

Call before you Overhead
1-702-593-6111
NEVADA POWER ENVIRONMENT SAFETY SERVICES DEPARTMENT

Call before you UnderGround
1-702-593-6111
1-702-222-2611

TOLL BROTHERS 1635 VILLAGE CENTER CIRCLE, SUITE 100 LAS VEGAS, NEVADA 89134 (702) 243-9800		TETRA TECH, INC. INTEGRATED UTILITIES GROUP 401 N. Buffalo Dr., Suite 100, Las Vegas, Nevada 89104 (702) 243-9800	
TRAFFIC, SIGNAGE AND STREETLIGHTING PLAN		TERRA BELLA UNIT 2 CITY OF LAS VEGAS	
QUALITY CONTROL BY:	QUALITY CONTROL BY:	SCALE:	TITLE:
DESIGNED BY:	CHECKED BY:	1"=40'	PROJECT NO. P08513-0004
DRAWN BY:		SEAL	
SHEET		ST2	
12 OF 13		DRAWING NO. 1074744-2	