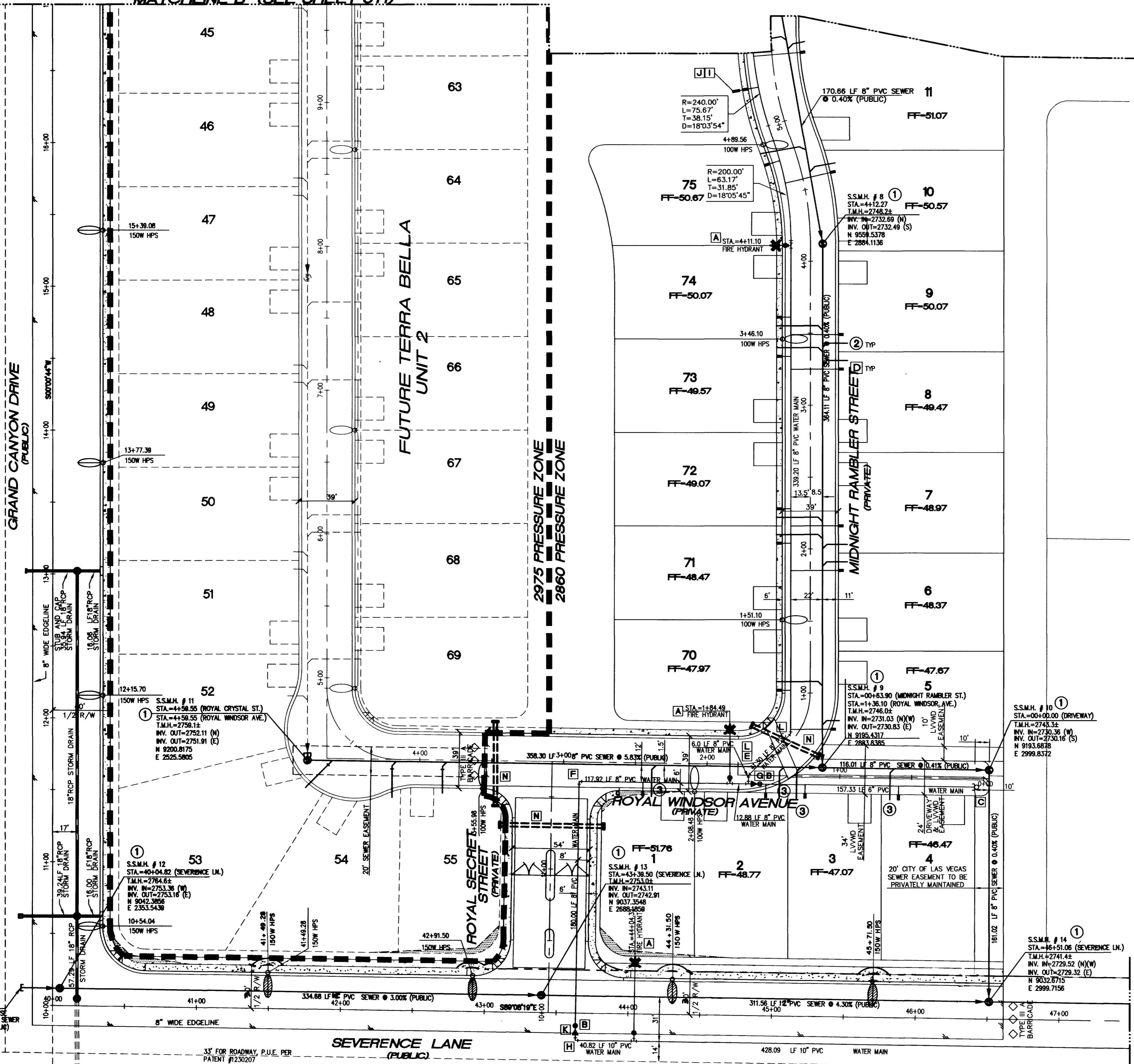


MATCHLINE B (SEE SHEET UT1)



UTILITY NOTE

- 1. NOTIFY TETRA TECH, INC. IMMEDIATELY OF ANY DISCREPANCIES IN THE PLAN OR CONDITIONS IN THE FIELD.
2. PRIOR TO CONSTRUCTION THE CONTRACTOR SHALL LOCATE AND VERIFY SIZE, MATERIAL, DEPTH, CONDITION, PRESSURE, AND LOCATION OF ALL EXISTING UTILITY LINES WITHIN THE CONSTRUCTION AREA.
3. PLANS MAY NOT INDICATE ALL EXISTING UTILITY LINES. CONTRACTOR IS TO EXERCISE EXTREME CAUTION DURING EXCAVATION IN ORDER TO AVOID DAMAGING ANY EXISTING UTILITY LINES.
4. CONTRACTOR TO SAWCUT AND REMOVE EXISTING ASPHALT AND CONCRETE AS NECESSARY FOR UTILITY TRENCHES.
5. ALL WATER SERVICE LINES AND METERS SHALL BE INSTALLED PER LAS VEGAS VALLEY WATER DISTRICT STANDARDS AND SPECIFICATIONS.
6. CONTRACTOR TO FIELD VERIFY LOCATION AND INVERT OF MANHOLE PRIOR TO CONSTRUCTION.

SEWER CONTRIBUTION

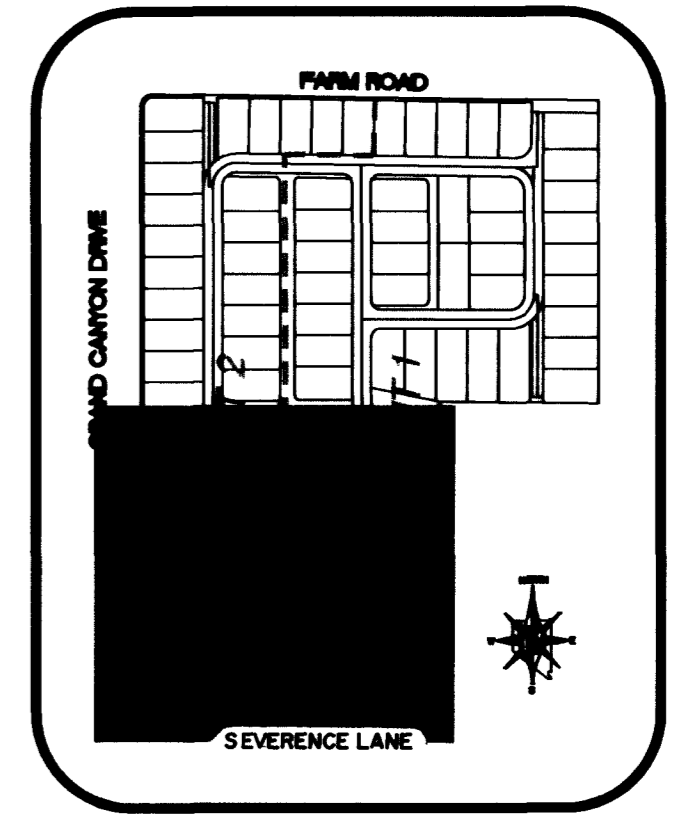
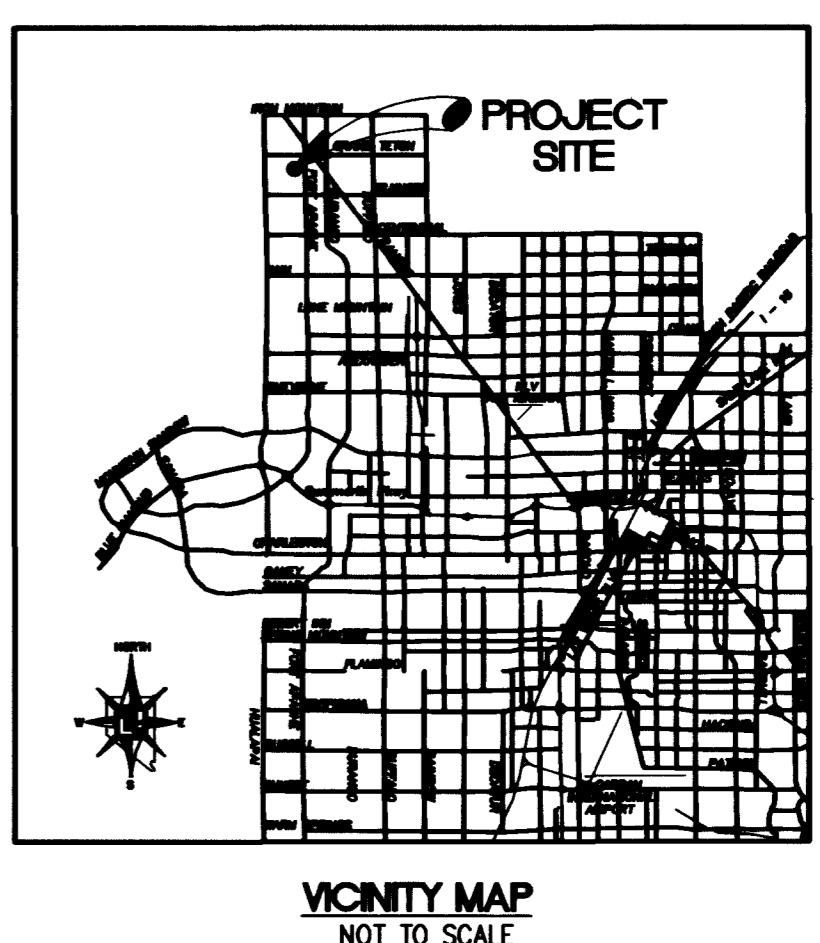
Table with 2 columns: Item, Quantity. Includes 1" Type I Manhole, 4" PVC Sewer Laterals, and 8" PVC Sewer Main.

SEWER KEY NOTES AND QUANTITIES

Table with 2 columns: Item, Quantity. Includes 8" Gate Valve, Cap and 2" Blow Off, 3/4" Meter and 1" Lateral, 8" Tee, 8" 90° Bend, 8" x 6" Reducer, 10" 90° Bend, 1" Meter and 1" Lateral, 1" RPPA 1" Meter and 1" Lateral, 10" x 8" Reducer, 8" 45° Bend, 6" 90° Bend, Irrigation Conduit, 6" Water Main, 8" Water Main, 10" Water Main, 8" D.I.P. Water Main.

FIRE FLOW CALCULATIONS

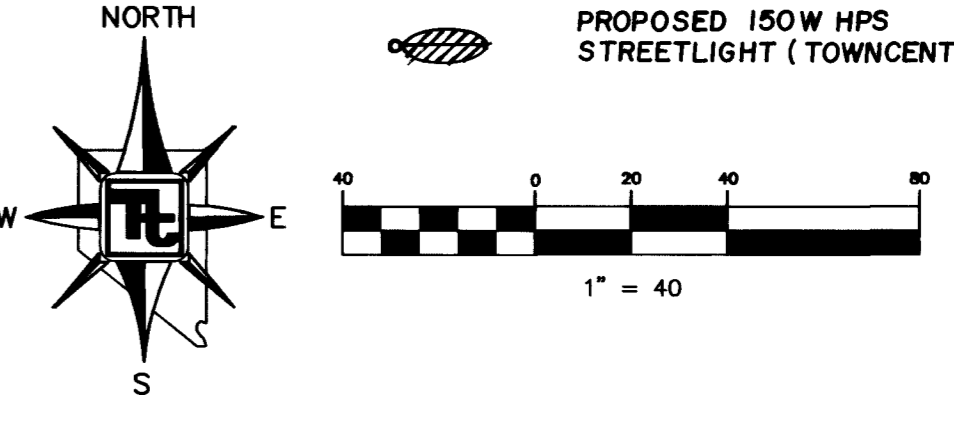
Table with 2 columns: Description, Quantity. Includes Fire Flow Requirement (1500 GPM), Square Footage (1750), Separation Walls (N/A), Building Height (25'), Number of Stories (2), Type of Construction (V-N), Occupancy (Residential), Full Automatic Fire Sprinkler System (No), Roof Construction (Brick Tile).



KEYMAP NOT TO SCALE

LEGEND

- PHASELINE
SEWER MAIN
WATER MAIN
FIRE HYDRANT ASSEMBLY
EXIST. WATER MAIN
EXIST. FIRE HYDRANT ASSEMBLY
SEWER SERVICE LATERAL
WATER SERVICE LATERAL
WATER SERVICE LATERAL W/ METER
ELBOW CONNECTION
TEE CONNECTION
GATE VALVE
BLOW-OFF ASSEMBLY
REDUCER
100W STREETLIGHT
150W STREETLIGHT
400W STREETLIGHT
SIGHT VISIBILITY RESTRICTION
PROPOSED 150W HPS STREETLIGHT (TOWNCENTER)

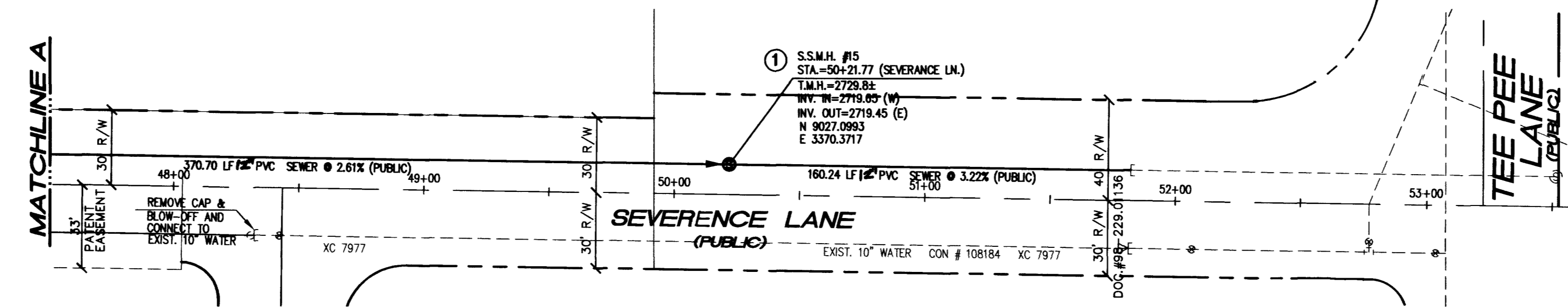


APPROVALS

LAB VEGAS VALLEY WATER DISTRICT TECHNICAL APPROVAL
PROJECT NAME:
THIS PROJECT WATER PLAN COMPLIES WITH THE LAS VEGAS VALLEY WATER DISTRICTS TECHNICAL REQUIREMENTS. HOWEVER, THIS WATER PLAN IS NOT APPROVED FOR CONSTRUCTION AT THIS TIME AND THIS SIGNATURE DOES NOT PROVIDE OR IMPLY A WATER COMMITMENT.
LAS VEGAS VALLEY WATER DISTRICT DATE
LAS VEGAS VALLEY FIRE DEPARTMENT DATE

BENCHMARK
CITY OF LAS VEGAS BENCHMARK - 2020 - 2014
REBAR ±124 FT. NORTHEAST OF DEER SPRINGS AND FORT APACHE.
ELEVATION = 808.987 METERS (NAVD88)
ELEVATION = 2647.20 FEET (NAVD88)
Call before you Dig
1-800-227-2600

BASIS OF BEARING
BEARING NORTH 00°37'43" EAST, BEING THE EAST LINE OF THE SOUTHEAST QUARTER (SE 1/4) OF THE NORTHEAST QUARTER (NE 1/4) OF SECTION 18, TOWNSHIP 19 SOUTH, RANGE 60 EAST, M.D.M., CITY OF LAS VEGAS, CLARK COUNTY, NEVADA, AS SHOWN ON FILE 114, PAGE 17 OF SURVEYS.
DISCLAIMER NOTE:
UTILITY LOCATION SHOWN HEREON ARE APPROXIMATE ONLY. IT SHALL BE THE CONTRACTOR'S RESPONSIBILITY TO DETERMINE THE EXACT HORIZONTAL AND VERTICAL LOCATION OF ALL EXISTING UNDERGROUND AND OVERHEAD UTILITIES PRIOR TO COMMENCING CONSTRUCTION. NO REPRESENTATION IS MADE THAT ALL EXISTING UTILITIES ARE SHOWN HEREON. THE ENGINEER ASSUMES NO RESPONSIBILITY FOR UTILITIES NOT SHOWN OR UTILITIES NOT SHOWN IN THEIR PROPER LOCATIONS. NOTIFY ENGINEER IMMEDIATELY IF DISCREPANCIES ARE ENCOUNTERED.



Vertical sidebar containing project information: TOLL BROTHERS, TETRA TECH, INC., UTILITY PLAN, TERRA BELLA UNIT 1, CITY OF LAS VEGAS, SHEET UT2, DRAWING NO. 3074744, and revision table.