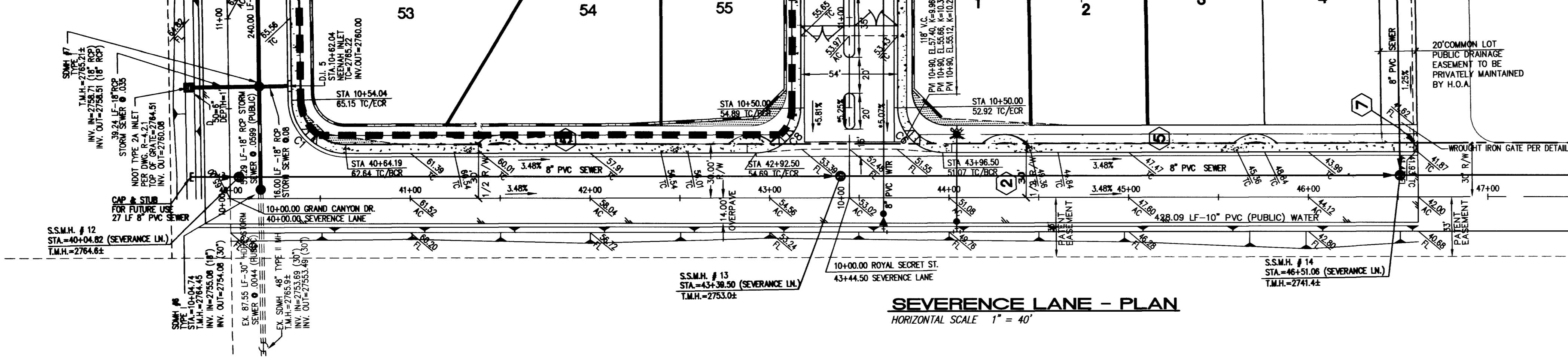
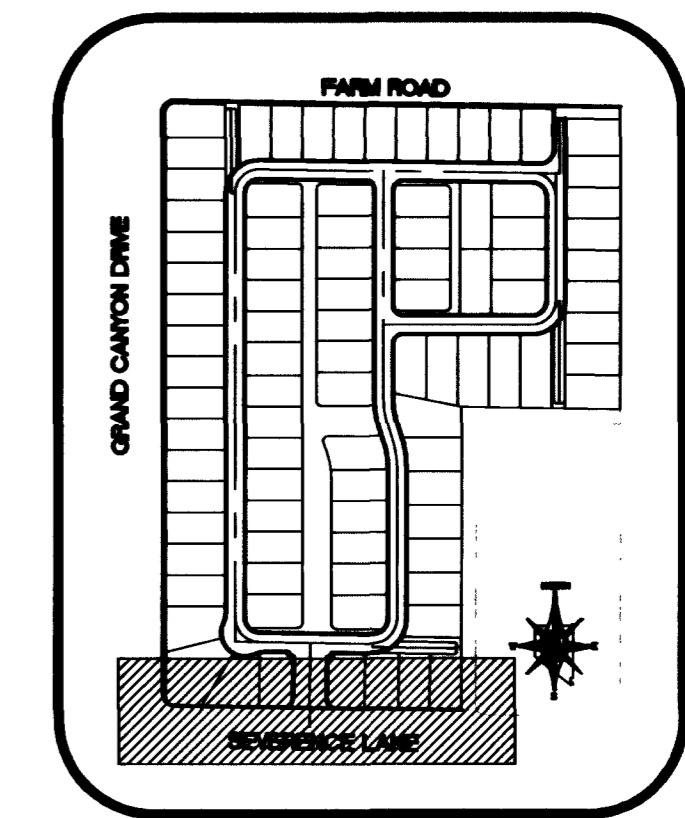


GRAND CANYON DRIVE
SEE SHEET PP3 FOR CONTINUATION

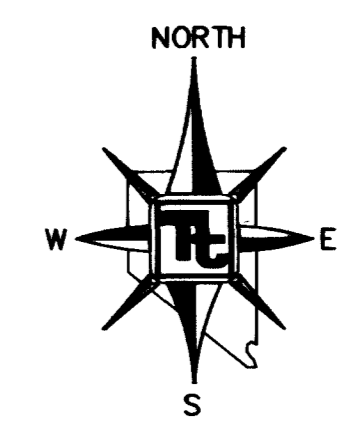
ROYAL SECRET STREET
SEE SHEET PP10 FOR CONTINUATION



MATCHLINE STA 47+50
SEE SHEET PP6 FOR CONTINUATION



KEYMAP
NOT TO SCALE

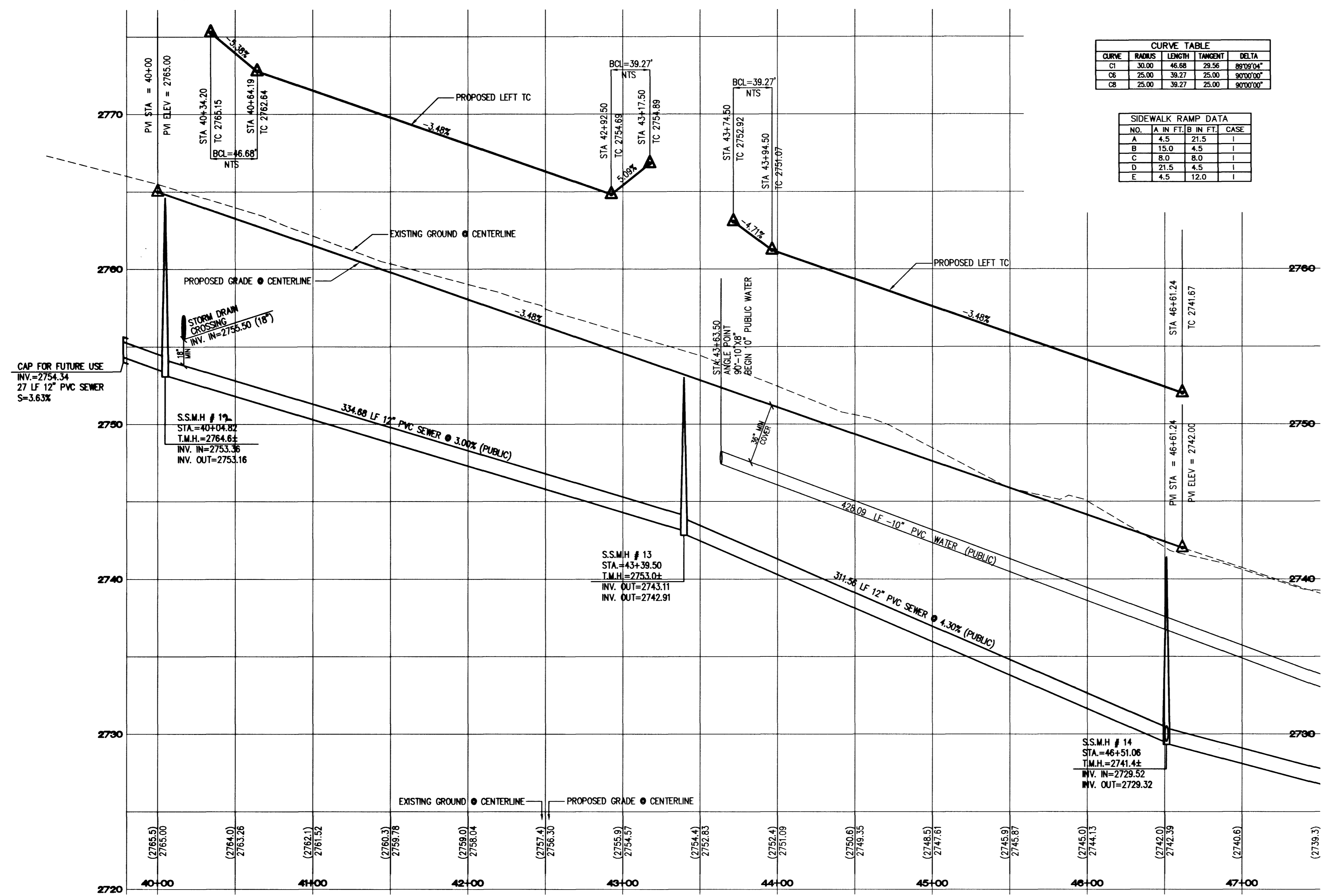


CURVE TABLE

CURVE	RADIUS	LENGTH	TANGENT	DELTA
C1	30.00	46.68	29.56	89°09'04"
C6	25.00	39.27	25.00	90°00'00"
C8	25.00	39.27	25.00	90°00'00"

SIDEWALK RAMP DATA

NO.	A IN FT	B IN FT	CASE
A	4.5	21.5	I
B	15.0	4.5	I
C	8.0	8.0	I
D	21.5	4.5	I
E	4.5	12.0	I



SEVERENCE LANE - PROFILE
HORIZONTAL SCALE: 1" = 40'
VERTICAL SCALE: 1" = 4'

GRADING NOTES

- TETRA TECH SHALL BE NOTIFIED IMMEDIATELY OF ANY DISCREPANCIES IN THE PLANS OR CONDITIONS IN THE FIELD.
- ALL WORK TO BE PERFORMED OUTSIDE OF THE PROJECT BOUNDARY AND ON PRIVATE PROPERTY SHALL NOT BE PERFORMED UNTIL WRITTEN PERMISSION AND EASEMENT HAVE BEEN OBTAINED FROM THE OFFSITE OWNER AND GIVEN TO CITY LAS VEGAS PUBLIC WORKS.
- FOR AREAS THAT ARE FLATTER THAN 2:1 SLOPE, OR LESS THAN 1" ELEVATION DIFFERENCE, SCARPS ARE NOT SHOWN ON PLAN FOR CLARITY PURPOSES.
- ALL SLOPE AREAS SHALL HAVE A MINIMUM ONE FOOT SHOULDER NEXT TO WALL PRIOR TO STARTING SLOPE.
- PAD SECTION SHOWN ON PLANS IS FOR REFERENCE ONLY. FOR ACTUAL SECTION, REFER TO GEOTECHNICAL REPORT FOR SOILS ENGINEERS' RECOMMENDATION.
- ALL SIDEWALK INSTALLATIONS SHALL CONFORM TO ADA REQUIREMENTS.
- ADD 2'00" TO ALL ELEVATIONS SHOWN.

STREET IMPROVEMENT CONSTRUCTION KEY

- 39' PRIVATE ST. = CONSTRUCT 2" AC PAVING OVER 4" TYPE II BASE PER MODIFIED U.S.D.C.C.A. STANDARD DWG. NO. 210.
- 80' PUBLIC R/W HALF STREET = 4" AC PAVING OVER 4" TYPE II BASE PER U.S.D.C.C.A. STANDARD DWG. NO. 205
- CONSTRUCT "L" CURB PER U.S.D.C.C.A. STANDARD DWG. NO. 216
- CONSTRUCT 8" WIDE CROSS GUTTER PER U.S.D.C.C.A. STANDARD DRAWING NO. 228
- CONSTRUCT 5' WIDE CONCRETE SIDEWALK PER U.S.D.C.C.A. STANDARD DRAWING NO. 234
- CONSTRUCT 6" HIGH DECORATIVE BLOCKWALL PER CLARK COUNTY STANDARDS AND SPECIFICATIONS.
- CONSTRUCT SIDEWALK UNDER-DRAIN PER U.S.D.C.C.A. DWG. NO. 236.
- CONSTRUCT 4" WIDE CONCRETE SIDEWALK PER U.S.D.C.C.A. STANDARD DRAWING NO. 234
- CONSTRUCT SIDEWALK RAMP PER U.S.D.C.C.A. DWG. NO. 235. TRANSITIONS PER RAMP DATA TABLE.

Avoid cutting underground utility lines. It's costly.
Call before you Dig
1-800-227-2600
UNDERGROUND SERVICE (USA)

Avoid overhead power line contact.
Call before you Overhead
1-702-593-6111
NEVADA POWER ENVIRONMENT SAFETY SERVICES DEPARTMENT

BENCHMARK
CITY OF LAS VEGAS BENCHMARK - 2090 - 20W4
REBAR ±124 FT. NORTHEAST OF DEER SPRINGS AND FORT APACHE.
ELEVATION = 806.867 METERS (NAVDB8)
ELEVATION = 2647.20 FEET (NAVDB8)

BASIS OF BEARING
BEARING NORTH 00°37'43" EAST, BEING THE EAST LINE OF THE SOUTHEAST QUARTER (SE 1/4) OF THE NORTHEAST QUARTER (NE 1/4) OF SECTION 18, TOWNSHIP 19 SOUTH, RANGE 60 EAST, M.D.M., CITY OF LAS VEGAS, CLARK COUNTY, NEVADA, AS SHOWN ON FILE 114, PAGE 17 OF SURVEYS.

APPROVAL:
[Signature]
LAS VEGAS VALLEY WATER DISTRICT
DATE: 2/6/03

SHEET		TITLE	
PLAN AND PROFILE		SEVERENCE LANE	
STA 40+00.00 - STA 47+50.00		TERRA BELLA UNIT 1	
CITY OF LAS VEGAS, NEVADA		CITY OF LAS VEGAS, NEVADA	
QUALITY CONTROL BY:	QUALITY CONTROL BY:	SCALE:	PROJECT NO.
		1"=40'	P08513-0004
DESIGNED BY:	CREATED BY:	DRAWING NO.	
		PP5	
DRAWN BY:		13 OF 22	
		DRAWING NO.	
		307 Y 4744	

TOLL BROTHERS
1635 VILLAGE CENTER CIRCLE, SUITE 100
LAS VEGAS, NEVADA 89134
(702) 243-9800

TETRA TECH, INC.
1111 S. LAS VEGAS BLVD., 8.0 FT. x 11.1 FT. OFFICE
401 N. Buffalo Dr. Suite 300, Las Vegas, Nevada 89148
(702) 243-4200

REV. DATE BY
REVISION