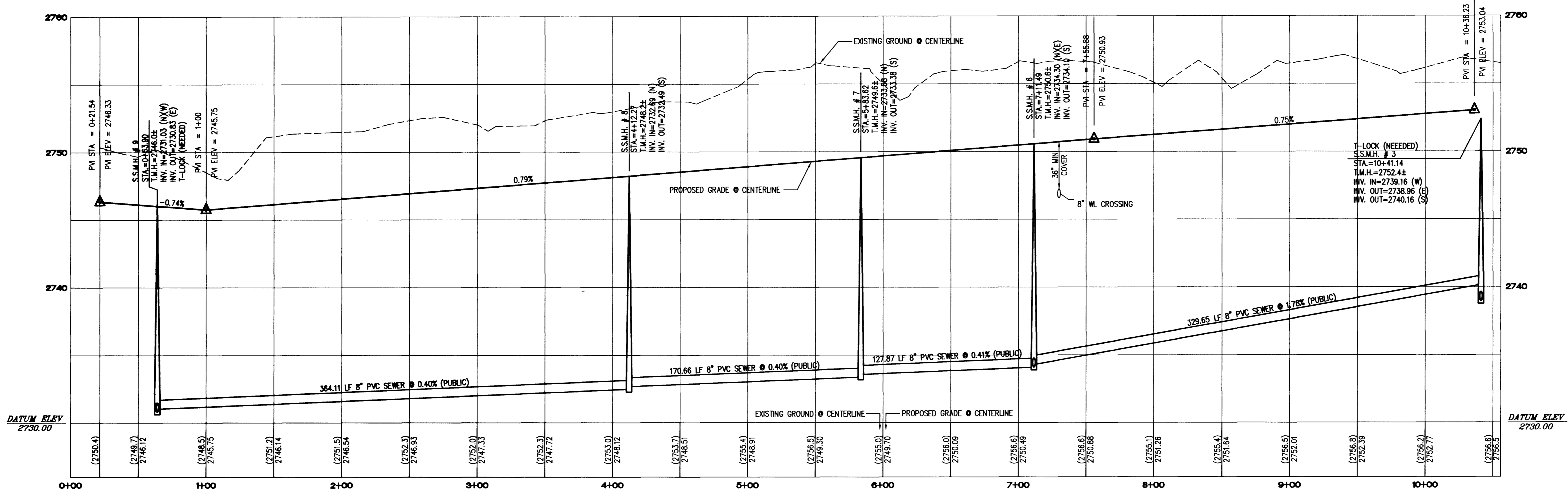
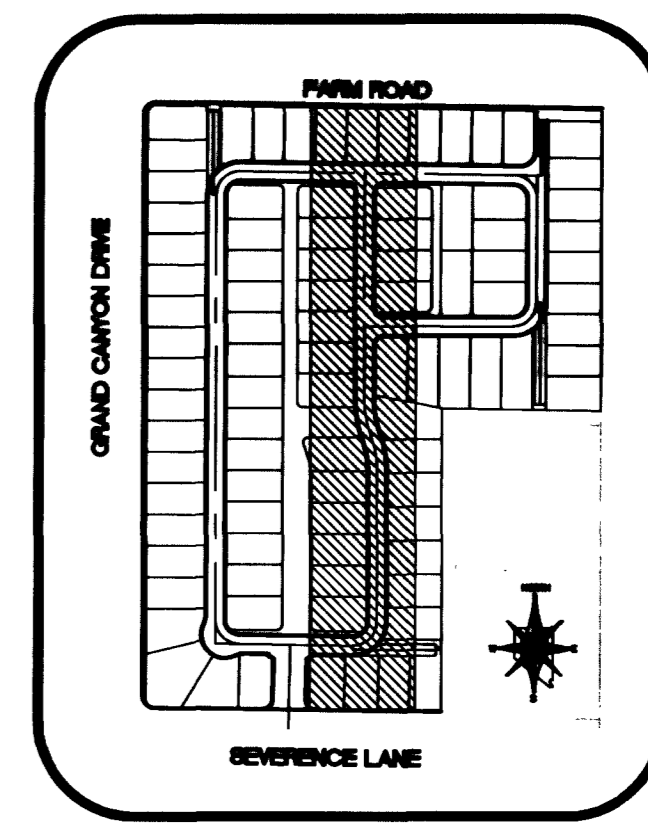
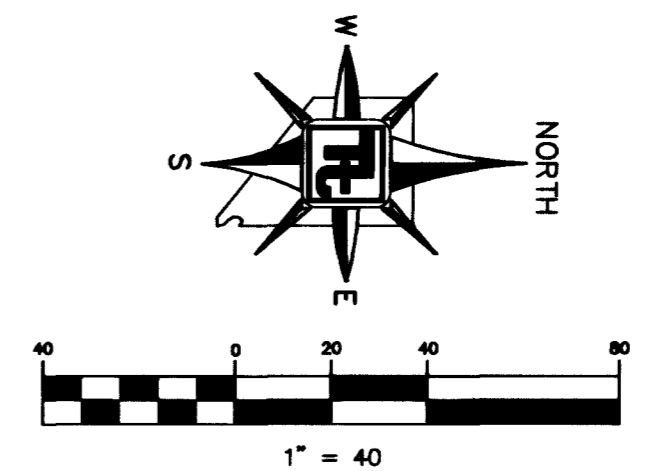


MIDNIGHT RAMBLER STREET - PLAN
HORIZONTAL SCALE: 1"=40'



MIDNIGHT RAMBLER STREET - PROFILE
HORIZONTAL SCALE: 1"=40'
VERTICAL SCALE: 1"=4'



KEYMAP
NOT TO SCALE

BENCHMARK
CITY OF LAS VEGAS BENCHMARK - 2C90 - 20W4
REBAR ±124 FT. NORTHEAST OF DEER SPRINGS AND FORT APACHE.
ELEVATION = 806.867 METERS (NAVD88)
ELEVATION = 2647.20 FEET (NAVD88)

| CURVE | RADIUS | LENGTH | TANGENT | DELTA |
|-------|--------|--------|---------|-----------|
| C10 | 69.00 | 109.37 | 69.99 | 90°49'02" |
| C11 | 30.00 | 47.55 | 30.43 | 90°49'05" |
| C16 | 20.00 | 31.12 | 19.70 | 89°08'22" |
| C17 | 200.00 | 72.75 | 36.79 | 20°50'40" |
| C18 | 230.00 | 86.95 | 43.96 | 20°50'40" |
| C19 | 190.50 | 65.63 | 33.18 | 20°49'56" |
| C21 | 219.50 | 79.97 | 40.44 | 20°52'31" |
| C22 | 20.00 | 31.40 | 19.98 | 89°57'13" |
| C23 | 20.00 | 31.43 | 20.02 | 90°02'47" |
| C24 | 20.00 | 31.72 | 20.30 | 90°01'38" |

| SIDEWALK RAMP DATA | |
|--------------------|----------------------------|
| NO. | A IN FT. / B IN FT. / CASE |
| H | 4.5 / 21.5 / I |
| K | 4.5 / 12.0 / I |
| N | 4.5 / 12.0 / I |

GRADING NOTES

- TETRA TECH SHALL BE NOTIFIED IMMEDIATELY OF ANY DISCREPANCIES IN THE PLANS OR CONDITIONS IN THE FIELD.
- ALL WORK TO BE PERFORMED OUTSIDE OF THE PROJECT BOUNDARY AND ON PRIVATE PROPERTY SHALL NOT BE PERFORMED UNTIL WRITTEN PERMISSION AND EASEMENT HAVE BEEN OBTAINED FROM THE OFFSITE OWNER AND GIVEN TO CITY LAS VEGAS PUBLIC WORKS.
- FOR AREAS THAT ARE FLATTER THAN 2% SLOPE, OR LESS THAN 1' ELEVATION DIFFERENCE, SCARPS ARE NOT SHOWN ON PLAN FOR CLARITY PURPOSES.
- ALL SLOPE AREAS SHALL HAVE A MINIMUM ONE FOOT SHOULDER NEXT TO WALL PRIOR TO STARTING SLOPE.
- PAD SECTION SHOWN ON PLANS IS FOR REFERENCE ONLY. FOR ACTUAL SECTION, REFER TO GEOTECHNICAL REPORT FOR SOILS ENGINEERS' RECOMMENDATION.
- ALL SIDEWALK INSTALLATIONS SHALL CONFORM TO ADA REQUIREMENTS.
- ADD 2600' TO ALL ELEVATIONS SHOWN.

STREET IMPROVEMENT CONSTRUCTION KEY

- 39' PRIVATE ST. = CONSTRUCT 2" AC PAVING OVER 4" TYPE II BASE PER MODIFIED U.S.D.C.C.A. STANDARD DWG. NO. 210.
- 80' PUBLIC R/W HALF STREET = 4" AC PAVING OVER 4" TYPE II BASE PER U.S.D.C.C.A. STANDARD DWG. NO. 205
- CONSTRUCT 12" CURB PER U.S.D.C.C.A. STANDARD DWG. NO. 216
- CONSTRUCT 8" WIDE CROSS GUTTER PER U.S.D.C.C.A. STANDARD DRAWING NO. 228
- CONSTRUCT 5' WIDE CONCRETE SIDEWALK PER U.S.D.C.C.A. STANDARD DRAWING NO. 234
- CONSTRUCT 6" HIGH DECORATIVE BLOCKWALL PER CLARK COUNTY STANDARDS AND SPECIFICATIONS.
- CONSTRUCT SIDEWALK UNDER-DRAIN PER U.S.D.C.C.A. DWG. NO. 236.
- CONSTRUCT 4" WIDE CONCRETE SIDEWALK PER U.S.D.C.C.A. STANDARD DRAWING NO. 234
- CONSTRUCT SIDEWALK RAMP PER U.S.D.C.C.A. DWG. NO. 235. TRANSITIONS PER RAMP DATA TABLE.

Call before you Dig
1-800-227-2600
NEVADA POWER ENVIRONMENT SAFETY SERVICES DEPARTMENT

Call before you Overhead
1-702-593-6111
NEVADA POWER ENVIRONMENT SAFETY SERVICES DEPARTMENT

TOLL BROTHERS
1635 VILLAGE CENTER CIRCLE, SUITE 100
LAS VEGAS, NEVADA 89134
(702) 243-9800

TETRA TECH, INC.
1177 S. RAYBURN BLVD., SUITE 100, LAS VEGAS, NEVADA 89148
401 N. BUFFALO DR., SUITE 100, LAS VEGAS, NEVADA 89148
(702) 243-4200

PLAN AND PROFILE
MIDNIGHT RAMBLER STREET
TERRA BELLA UNIT 1
CITY OF LAS VEGAS, NEVADA

SHEET: P08513-0004
DRAWN BY: []
DESIGNED BY: []
CHECKED BY: []
SCALE: 1"=40'
PROJECT NO.: P08513-0004

PP8
16 OF 22
DRAWING NO.: 30744744