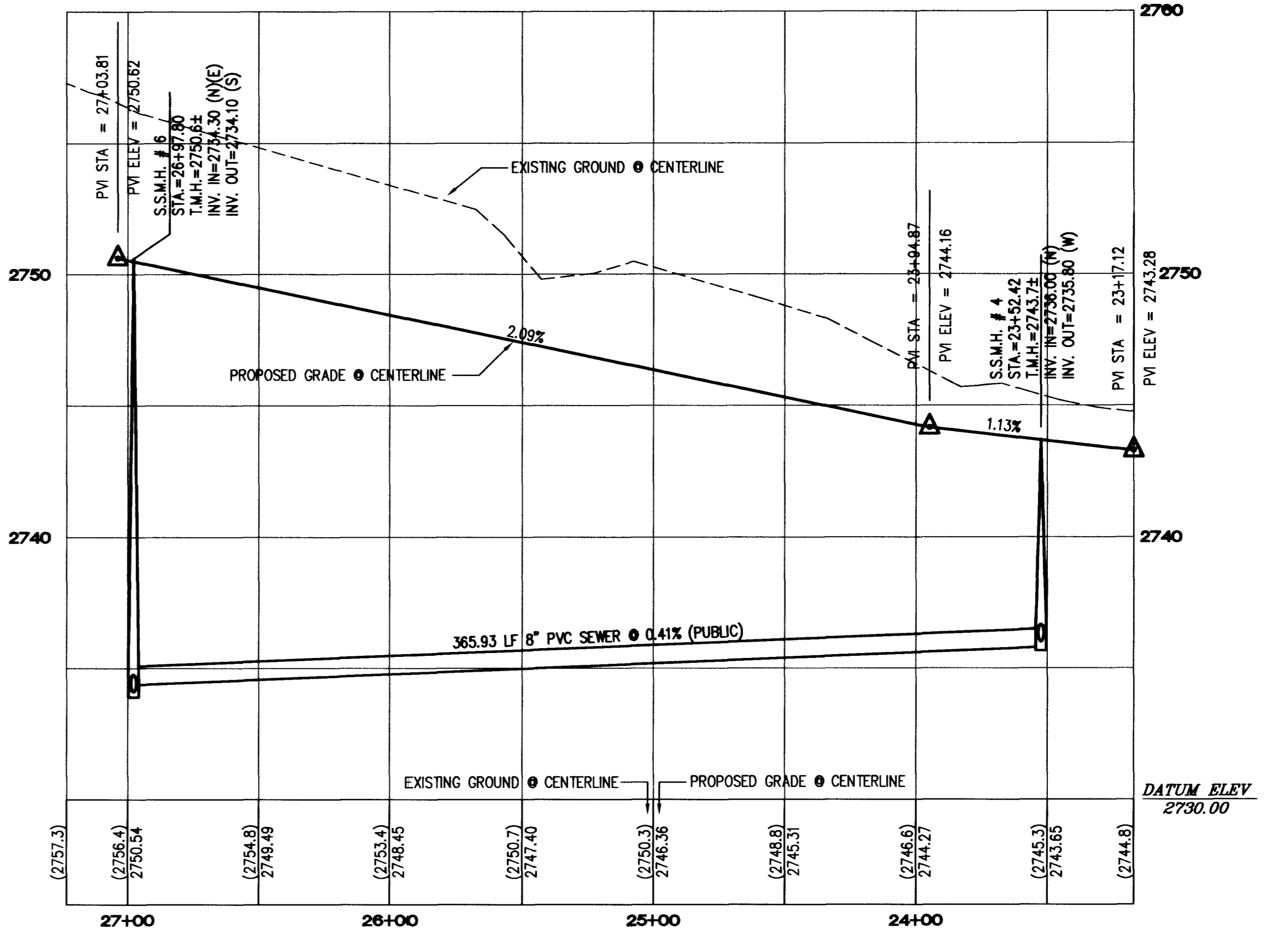
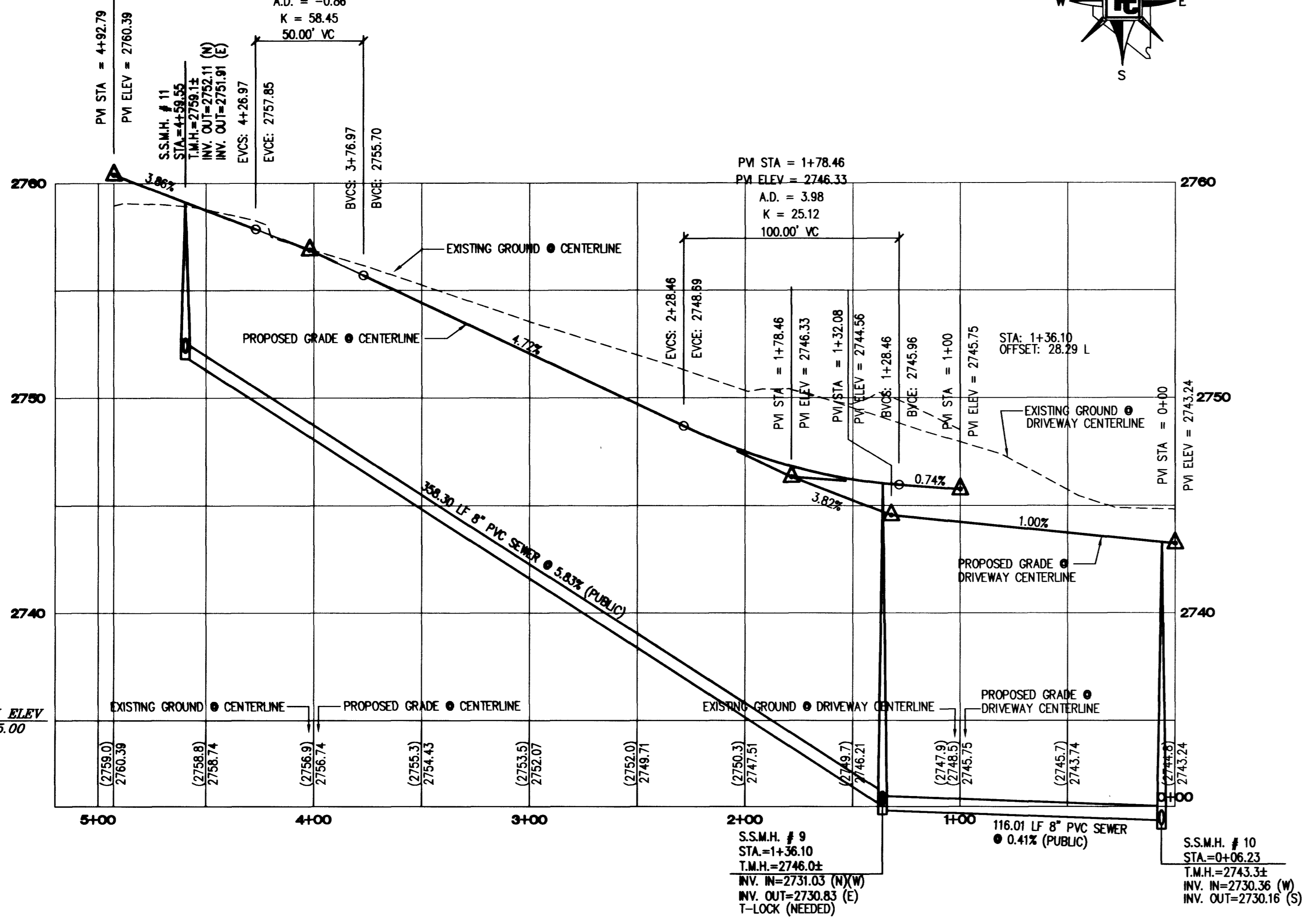
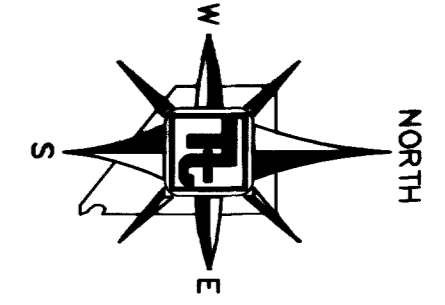
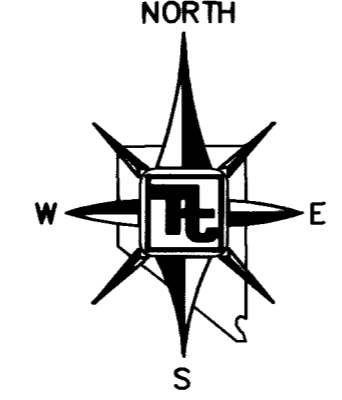


**ROYAL WINDSOR AVENUE - PLAN**  
HORIZONTAL SCALE: 1"=40'

**CANYON HOLLOW AVENUE - PLAN**  
HORIZONTAL SCALE: 1"=40'



**ROYAL WINDSOR AVENUE - PROFILE**  
HORIZONTAL SCALE: 1"=40'  
VERTICAL SCALE: 1"=4'

**CANYON HOLLOW AVENUE - PROFILE**  
HORIZONTAL SCALE: 1"=40'  
VERTICAL SCALE: 1"=4'

**BENCHMARK**  
CITY OF LAS VEGAS BENCHMARK - 2090 - 20W4  
REBAR ±124 FT. NORTHEAST OF DEER SPRINGS AND FORT APACHE.  
ELEVATION = 806.667 METERS (NAVOD88)  
ELEVATION = 2647.20 FEET (NAVOD88)

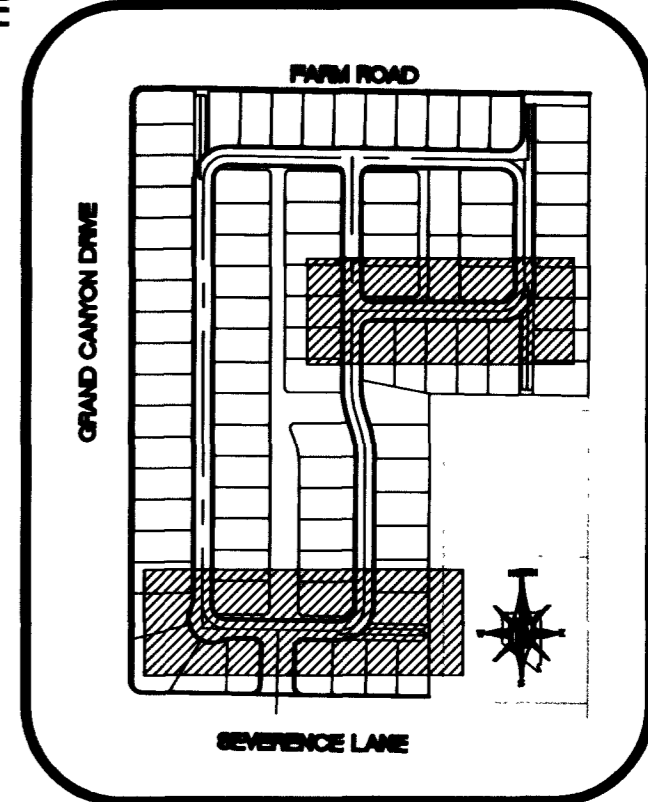
**BASIS OF BEARING**  
BEARING NORTH 00°37'43" EAST, BEING THE EAST LINE OF THE SOUTHEAST QUARTER (SE 1/4) OF THE NORTHEAST QUARTER (NE 1/4) OF SECTION 18, TOWNSHIP 19 SOUTH, RANGE 60 EAST, M.D.M., CITY OF LAS VEGAS, CLARK COUNTY, NEVADA, AS SHOWN ON FILE 114, PAGE 17 OF SURVEYS.

CURVE	RADIUS	LENGTH	TANGENT	DELTA
C7	20.00	31.42	20.00	90°00'00"
C9	20.00	31.42	20.00	90°00'00"
C10	69.00	109.37	69.99	90°49'05"
C11	30.00	47.55	30.43	90°49'05"
C12	20.00	31.40	19.98	89°52'13"
C23	20.00	31.43	20.02	90°02'47"
C25	69.00	108.38	69.00	90°00'00"
C27	30.00	47.12	30.00	90°00'00"

SIDEWALK RAMP DATA			
NO.	A IN FT.	B IN FT.	CASE
B	15.0	4.5	I
C	8.0	8.0	I
G	8.0	8.0	I
K	4.5	12.0	I
L	8.0	8.0	I

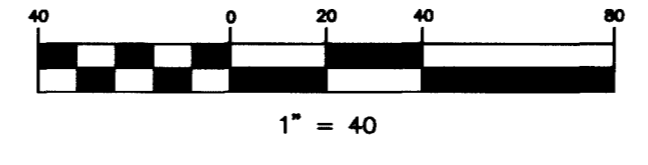
- GRADING NOTES**
- TETRA TECH SHALL BE NOTIFIED IMMEDIATELY OF ANY DISCREPANCIES IN THE PLANS OR CONDITIONS IN THE FIELD.
  - ALL WORK TO BE PERFORMED OUTSIDE OF THE PROJECT BOUNDARY AND ON PRIVATE PROPERTY SHALL NOT BE PERFORMED UNTIL WRITTEN PERMISSION AND EASEMENT HAVE BEEN OBTAINED FROM THE OFFSITE OWNER AND GIVEN TO CITY LAS VEGAS PUBLIC WORKS.
  - FOR AREAS THAT ARE FLATTER THAN 2:1 SLOPE, OR LESS THAN 1" ELEVATION DIFFERENCE, SCARPS ARE NOT SHOWN ON PLAN FOR CLARITY PURPOSES.
  - ALL SLOPE AREAS SHALL HAVE A MINIMUM ONE FOOT SHOULDER NEXT TO WALL PRIOR TO STARTING SLOPE.
  - PAD SECTION SHOWN ON PLANS IS FOR REFERENCE ONLY. FOR ACTUAL SECTION, REFER TO GEOTECHNICAL REPORT FOR SOILS ENGINEERS RECOMMENDATION.
  - ALL SIDEWALK INSTALLATIONS SHALL CONFORM TO ADA REQUIREMENTS.
  - ADD 2'00" TO ALL ELEVATIONS SHOWN.

- STREET IMPROVEMENT CONSTRUCTION KEY**
- 38" PRIVATE ST. = CONSTRUCT 3" AC PAVING OVER 4" TYPE II BASE PER MODIFIED U.S.D.C.C.A. STANDARD DWG. NO. 210.
  - 80" PUBLIC R/W HALF STREET = 4" AC PAVING OVER 4" TYPE II BASE PER U.S.D.C.C.A. STANDARD DWG. NO. 205
  - CONSTRUCT "L" CURB PER U.S.D.C.C.A. STANDARD DWG. NO. 216
  - CONSTRUCT 8" WIDE CROSS GUTTER PER U.S.D.C.C.A. STANDARD DRAWING NO. 228
  - CONSTRUCT 5" WIDE CONCRETE SIDEWALK PER U.S.D.C.C.A. STANDARD DRAWING NO. 234
  - CONSTRUCT 6" HIGH DECORATIVE BLOCKWALL PER CLARK COUNTY STANDARDS AND SPECIFICATIONS.
  - CONSTRUCT SIDEWALK UNDER-DRAIN PER U.S.D.C.C.A. DWG. NO. 236.
  - CONSTRUCT 4" WIDE CONCRETE SIDEWALK PER U.S.D.C.C.A. STANDARD DRAWING NO. 234
  - CONSTRUCT SIDEWALK RAMP PER U.S.D.C.C.A. DWG. NO. 235. TRANSITIONS PER RAMP DATA TABLE.



Avoid cutting underground utility lines. It's costly.  
**Call before you Dig**  
1-800-227-2600  
UNDERGROUND SERVICE (USA)

Avoid overhead power line contact.  
**Call before you Overhead**  
1-702-593-6111  
NEVADA POWER ENVIRONMENT SAFETY SERVICES DEPARTMENT



<b>TOLL BROTHERS</b> 1635 VILLAGE CENTER CIRCLE, SUITE 100 LAS VEGAS, NEVADA 89134 (702) 243-4800		<b>TETRA TECH, INC.</b> ENGINEERING, ARCHITECTURE, SURVEYING GROUP 401 N. Buffalo Dr. Suite 100, Las Vegas, Nevada 89104 (702) 243-9800	
<b>PLAN AND PROFILE</b> ROYAL WINDSOR AVENUE CANYON HOLLOW AVENUE		<b>TERRA BELLA UNIT 1</b> CITY OF LAS VEGAS, NEVADA	
SHEET PP7 15 OF 22 DRAWING NO. 30744744	SCALE: 1"=40' 1"=4'	PROJECT NO. P08513-0004	SEAL  EDWARD M. HOUGH CIVIL ENGINEER No. 10149