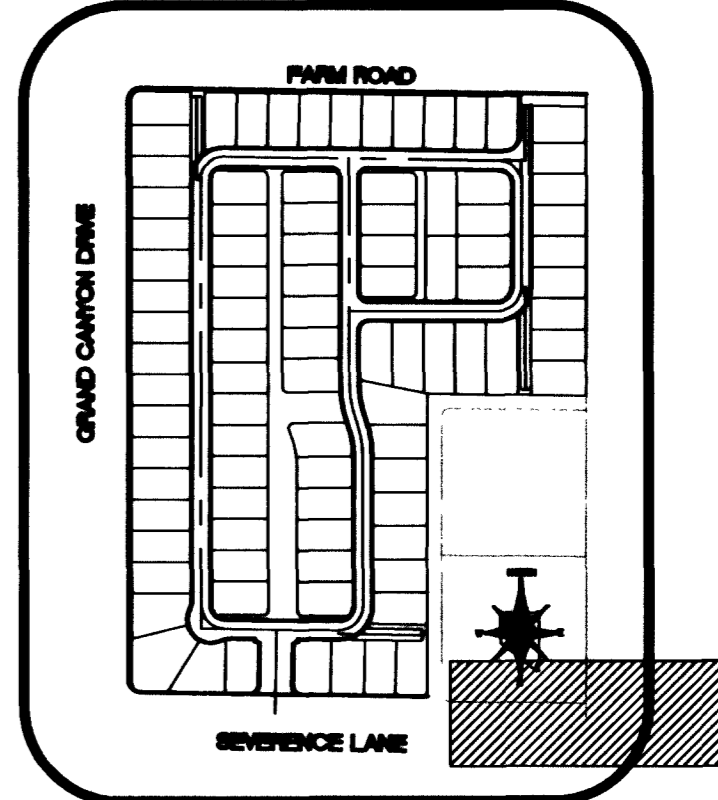
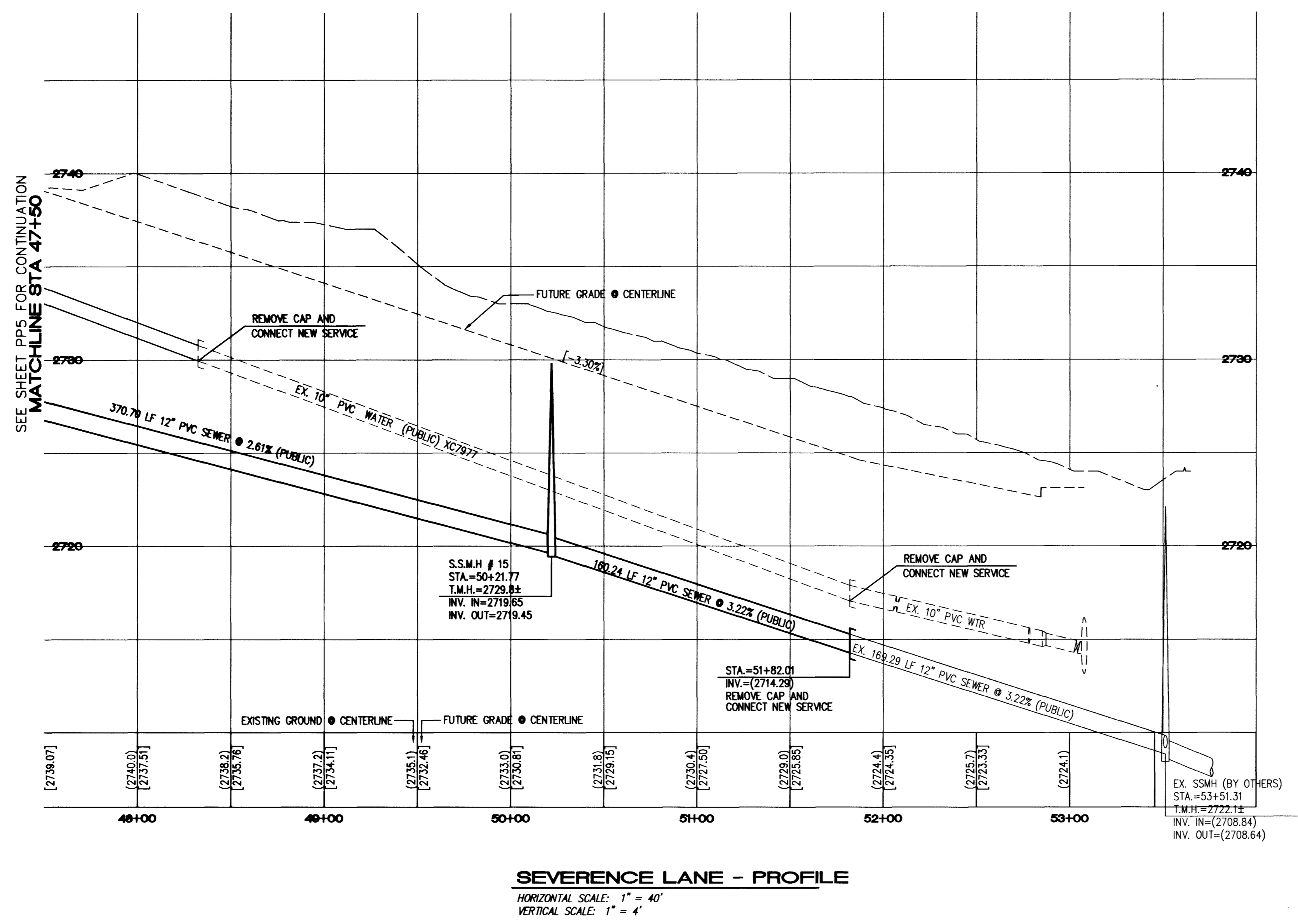
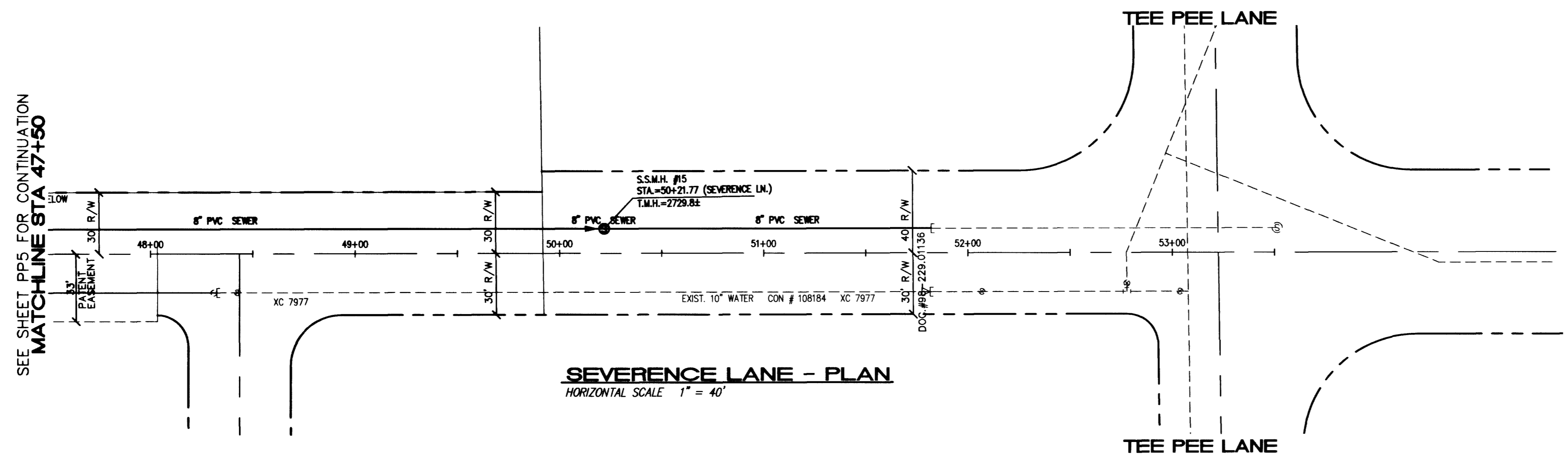
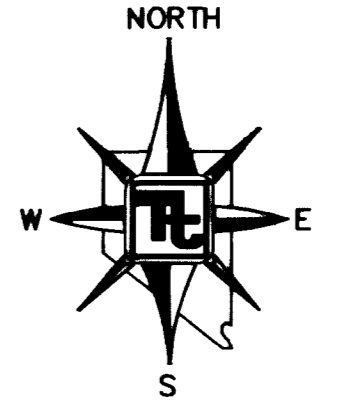


SEE SHEET PP5 FOR CONTINUATION
MATCHLINE STA 47+50

SEE SHEET PP5 FOR CONTINUATION
MATCHLINE STA 47+50



KEYMAP
NOT TO SCALE



GRADING NOTES

1. TETRA TECH SHALL BE NOTIFIED IMMEDIATELY OF ANY DISCREPANCIES IN THE PLANS OR CONDITIONS IN THE FIELD.
2. ALL WORK TO BE PERFORMED OUTSIDE OF THE PROJECT BOUNDARY AND ON PRIVATE PROPERTY SHALL NOT BE PERFORMED UNTIL WRITTEN PERMISSION AND EASEMENT HAVE BEEN OBTAINED FROM THE OFFSITE OWNER AND GIVEN TO CITY LAS VEGAS PUBLIC WORKS.
3. FOR AREAS THAT ARE FLATTER THAN 2:1 SLOPE, OR LESS THAN 1' ELEVATION DIFFERENCE, SCARPS ARE NOT SHOWN ON PLAN FOR CLARITY PURPOSES.
4. ALL SLOPE AREAS SHALL HAVE A MINIMUM ONE FOOT SHOULDER NEXT TO WALL PRIOR TO STARTING SLOPE.
5. PAD SECTION SHOWN ON PLANS IS FOR REFERENCE ONLY. FOR ACTUAL SECTION, REFER TO GEOTECHNICAL REPORT FOR SOILS ENGINEERS' RECOMMENDATION.
6. ALL SIDEWALK INSTALLATIONS SHALL CONFORM TO ADA REQUIREMENTS.
7. ADD 2'00" TO ALL ELEVATIONS SHOWN.

STREET IMPROVEMENT CONSTRUCTION KEY

- ① 39' PRIVATE ST. = CONSTRUCT 2" AC PAVING OVER 4" TYPE II BASE PER MODIFIED U.S.D.C.C.A. STANDARD DWG. NO. 210.
- ② 80' PUBLIC R/W HALF STREET = 4" AC PAVING OVER 4" TYPE II BASE PER U.S.D.C.C.A. STANDARD DWG. NO. 205
- ③ CONSTRUCT "L" CURB PER U.S.D.C.C.A. STANDARD DWG. NO. 216
- ④ CONSTRUCT 8" WIDE CROSS GUTTER PER U.S.D.C.C.A. STANDARD DRAWING NO. 228
- ⑤ CONSTRUCT 5' WIDE CONCRETE SIDEWALK PER U.S.D.C.C.A. STANDARD DRAWING NO. 234
- ⑥ CONSTRUCT 6' HIGH DECORATIVE BLOCKWALL PER CLARK COUNTY STANDARDS AND SPECIFICATIONS.
- ⑦ CONSTRUCT SIDEWALK UNDER-DRAIN PER U.S.D.C.C.A. DWG. NO. 236.
- ⑧ CONSTRUCT 4' WIDE CONCRETE SIDEWALK PER U.S.D.C.C.A. STANDARD DRAWING NO. 234
- ⑨ CONSTRUCT SIDEWALK RAMP PER U.S.D.C.C.A. DWG. NO. 235. TRANSITIONS PER RAMP DATA TABLE.

REV.	DATE	BY	REVISION

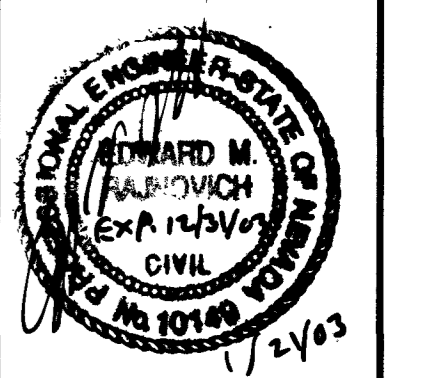
TOLL BROTHERS
1635 VILLAGE CENTER CIRCLE, SUITE 100
LAS VEGAS, NEVADA 89134
(702) 243-9800

TETRA TECH, INC.
1177 N. LAS VEGAS BLVD., SUITE 100, LAS VEGAS, NV 89102
401 N. BUFFALO DR., SUITE 200, LAS VEGAS, NEVADA 89148
(702) 243-9800

PLAN AND PROFILE
SEVERENCE LANE
STA 47+50.00 - STA 64+00.00

TERRA BELLA UNIT 1
CITY OF LAS VEGAS, NEVADA

QUALITY CONTROL BY:	QUALITY CONTROL BY:	SCALE: 1"=40'	PROJECT NO. P08513-0004
		1"=4'	



APPROVAL:

[Signature]
LAS VEGAS VALLEY WATER DISTRICT
DATE 2/6/03

Avoid cutting underground utility lines. It's costly.
Call before you Dig
1-800-227-2600
UNDERGROUND SERVICE (USA)

Avoid overhead power line contact.
Call before you Overhead
1-702-593-6111
NEVADA POWER ENVIRONMENT SAFETY SERVICES DEPARTMENT

BENCHMARK
CITY OF LAS VEGAS BENCHMARK - 2090 - 20W4
REBAR ±124 FT. NORTHEAST OF DEER SPRINGS AND FORT APACHE.
ELEVATION = 806.867 METERS (NAVDB8)
ELEVATION = 2647.20 FEET (NAVDB8)

BASIS OF BEARING
BEARING NORTH 00°37'43" EAST, BEING THE EAST LINE OF THE SOUTHEAST QUARTER (SE 1/4) OF THE NORTHEAST QUARTER (NE 1/4) OF SECTION 18, TOWNSHIP 19 SOUTH, RANGE 60 EAST, M.D.M., CITY OF LAS VEGAS, CLARK COUNTY, NEVADA, AS SHOWN ON FILE 114, PAGE 17 OF SURVEYS.