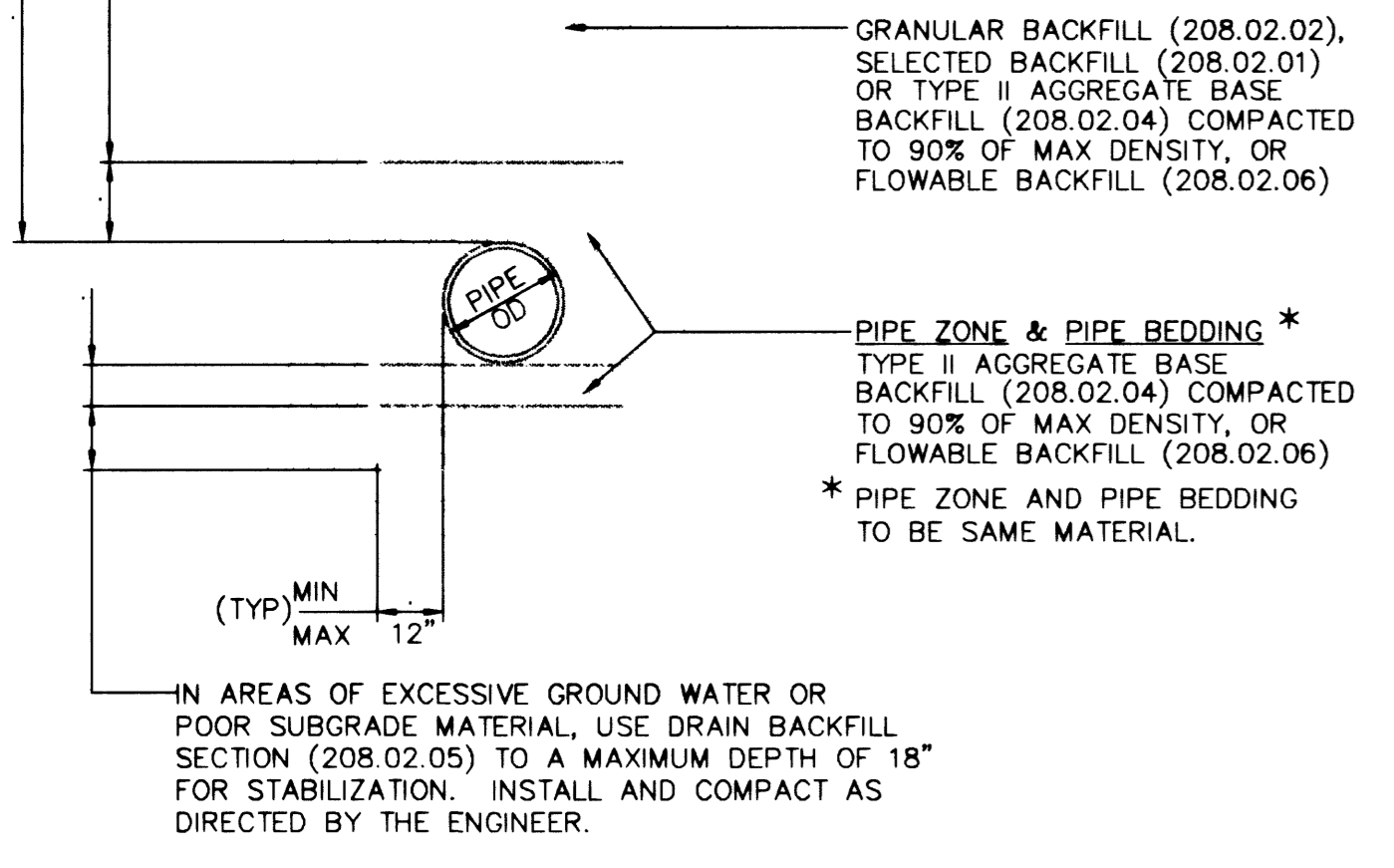
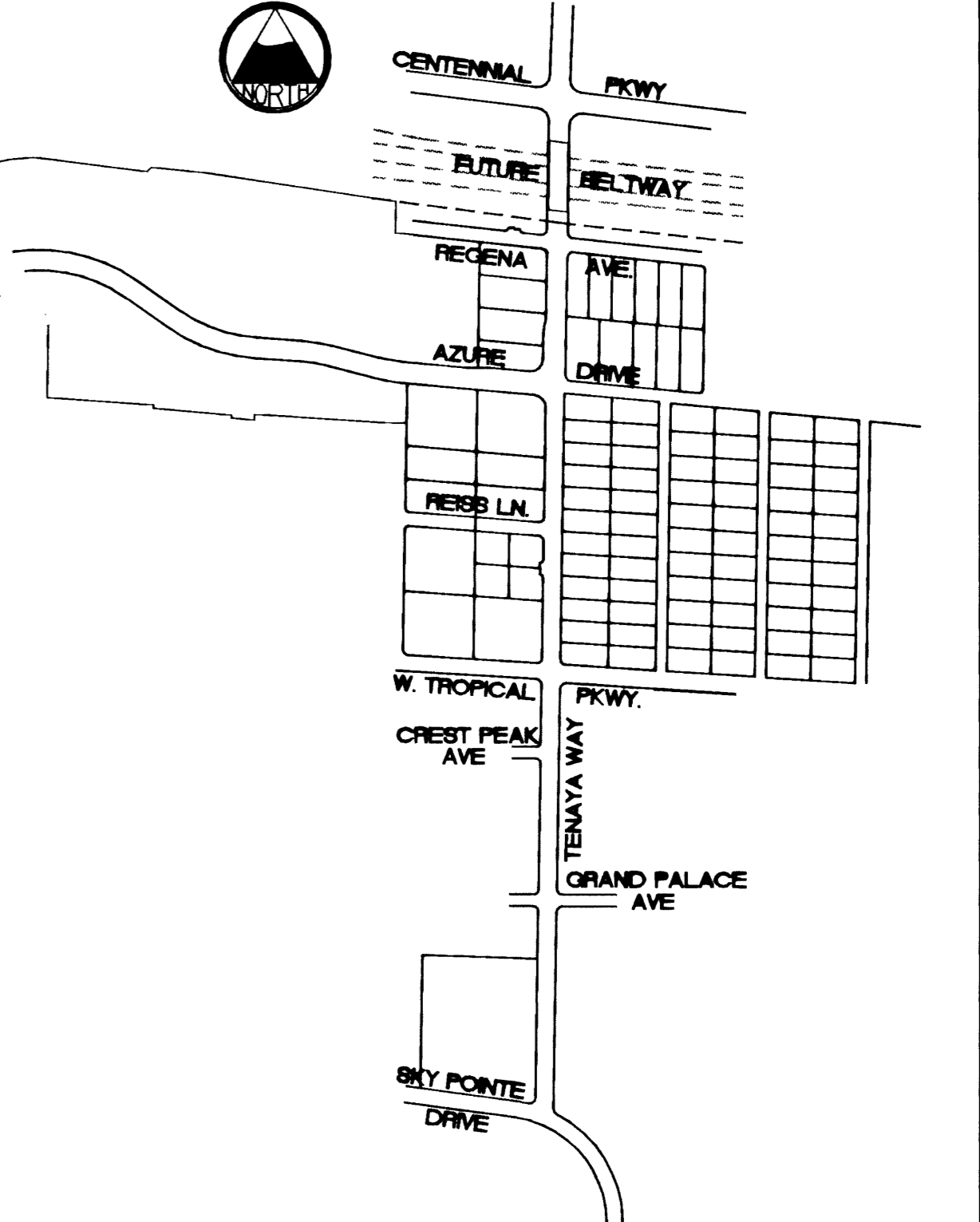
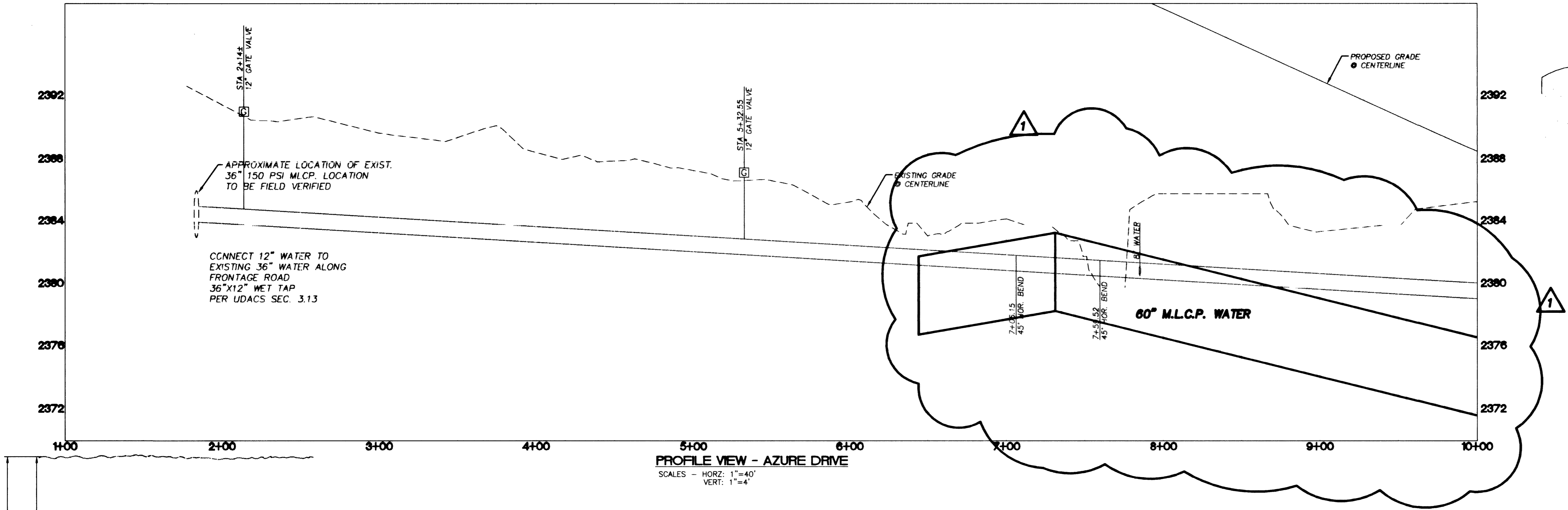
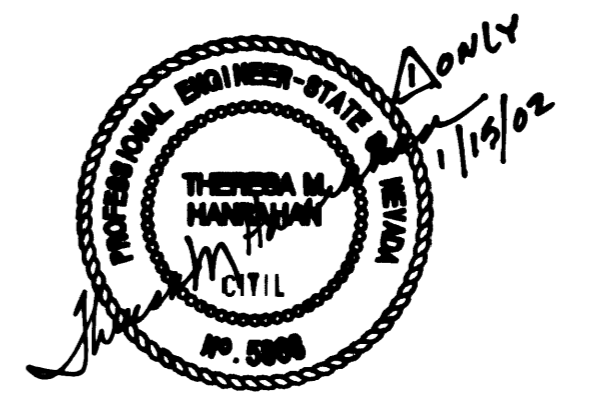
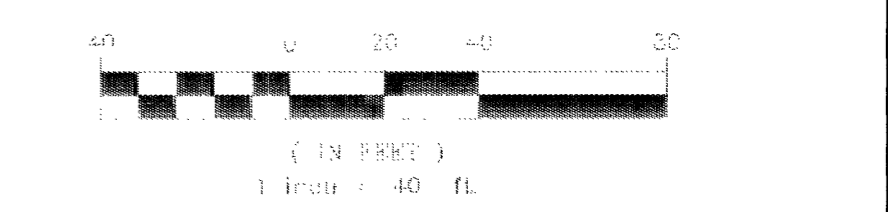


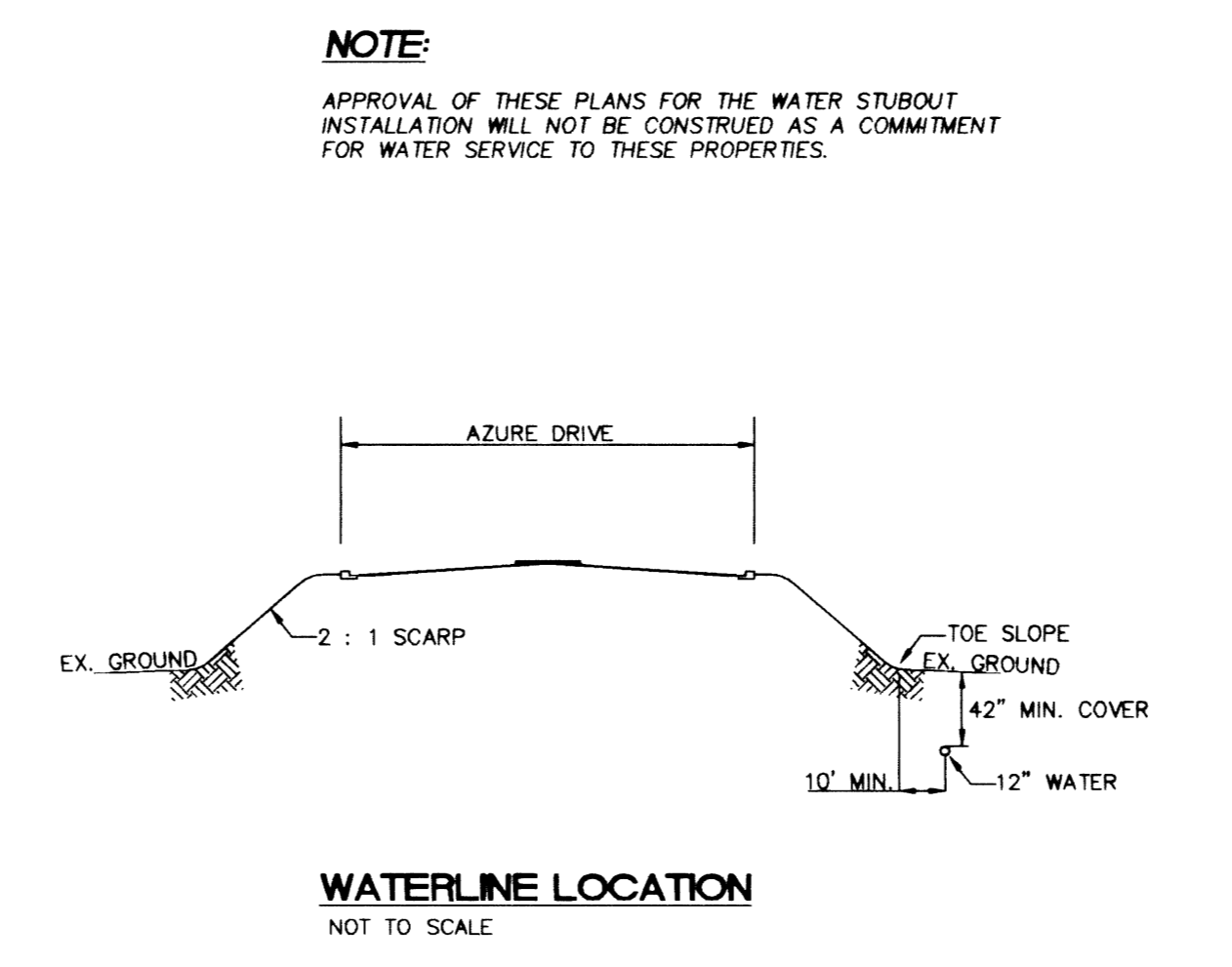
- WATERLINE IMPROVEMENTS**
- (90) NOT USED
 - (91) CONSTRUCT 8" PVC WATER LATERAL
 - (92) CONSTRUCT 12"x8" TEE AND 8" GATE VALVE W/THRUST BLOCK
 - (93) CONSTRUCT 12" TEE AND VALVE W/THRUST BLOCK
 - (94) CONSTRUCT 12" 45° BEND WITH THRUST BLOCK
 - (95) CONSTRUCT WATERLINE CAP WITH BLOWOFF PER UDACS PLATE 4
 - (96) CONSTRUCT 12" GATE VALVE W/ANCHOR BLOCK
 - (97) CONSTRUCT IRRIGATION PIPE SLEEVES. SEE DETAIL SHEET SCS1 (2 EA - 4" DIA SCH 40 PVC)
 - (98) CONSTRUCT IRRIGATION WIRE SLEEVES. SEE DETAIL SHEET SCS1 (2 EA - 2" DIA SCH 40 PVC)
 - (99) NOT USED
 - (100) NOT USED
 - (101) CONSTRUCT FIRE HYDRANT ASSEMBLY 12"x8" TEE WITH 6" GATE VALVE PER UDACS PLATE 7
 - (102) CONSTRUCT 12" 90° ELBOW WITH THRUST BLOCK
 - (103) REMOVE CAP AND CONNECT TO EXISTING 12" WATER VALVE TO REMAIN CLOSED.
 - (104) CEMENT SLURRY ENCASE WATER 10' EACH SIDE
 - (105) CONSTRUCT 8" PVC WATER MAIN
 - (106) CONSTRUCT 12" PVC WATER MAIN
 - (107) CONNECT TO EXISTING WATER

BASIS OF BEARING:
 NORTH AMERICAN DATUM - 1983 (NAD'83), NEVADA COORDINATE SYSTEM - 1983 (NCS'83), EAST ZONE (2701), MODIFIED AS SHOWN BY A MAP ON FILE IN THE OFFICE OF THE COUNTY RECORDER, CLARK COUNTY, NEVADA IN FILE 89 OF RECORDS OR SURVEYS, PAGE 3

BENCHMARKS:
 #1LV90/27W4, CLV, PLS 2050 AL CAP W/1/4 SEC.27 ELEV. 2381.17 NAVD 88
 #1LV90/27N4, CLV, AL CAP, PLS 2984, CENTENNIAL PKWY & TENAYA WAY ELEV. 2356.41 NAVD 88



- NOTES FOR PAVED AND UNPAVED AREAS**
1. ACCEPTABLE METHODS OF COMPACTION
 - A BEDDING AND PIPE ZONE AREAS
 FLOODING AND JETTING OR MECHANICAL COMPACTION. (NEVADA DEPARTMENT OF TRANSPORTATION RIGHT OF WAY MECHANICAL COMPACTION ONLY)
 - B ABOVE PIPE ZONE
 FLOODING AND JETTING OR MECHANICAL COMPACTION. MECHANICAL COMPACTION ONLY FOR A MINIMUM OF TOP 16" IN PAVED AREAS (NEVADA DEPARTMENT OF TRANSPORTATION RIGHT OF WAY MECHANICAL COMPACTION ONLY)
 2. TRENCH EXCAVATION SHALL COMPLY WITH THE CURRENT REGULATIONS AS DETERMINED BY NEVADA OCCUPATIONAL SAFETY AND HEALTH ADMINISTRATION.
 3. REFERENCE: UNIFORM STANDARD SPECIFICATIONS FOR PUBLIC WORKS CONSTRUCTION OFF-SITE IMPROVEMENTS CLARK COUNTY AREA NEVADA, LATEST EDITION.
 4. THE MINIMUM COVER IS REFERENCED TO FUTURE FINISHED FINAL GRADES UNLESS OTHERWISE SHOWN ON PROFILE DRAWINGS.
 5. CONTRACTOR TO SUPPORT PIPE WITH SANDBAGS AND SPOT LOAD PIPE AS REQUIRED DURING INSTALLATION OF FLOWABLE BACKFILL IN PIPE ZONE AND PIPE BEDDING AREAS.



KEY MAP
 APPROVED FOR CONSTRUCTION
 LAS VEGAS VALLEY WATER DISTRICT
 DATE: 4/10/02

DISCLAIMER NOTE
 UTILITY LOCATIONS SHOWN HEREON ARE APPROXIMATE ONLY. IT SHALL BE THE CONTRACTOR'S RESPONSIBILITY TO DETERMINE THE EXACT HORIZONTAL AND VERTICAL LOCATION OF ALL EXISTING UNDERGROUND UTILITIES PRIOR TO COMMENCING CONSTRUCTION. NO REPRESENTATION IS MADE THAT ALL EXISTING UTILITIES ARE SHOWN HEREON. THE ENGINEER ASSUMES NO RESPONSIBILITY FOR UTILITIES NOT SHOWN OR UTILITIES NOT SHOWN IN THEIR PROPER LOCATION.

DEPARTMENT OF PUBLIC WORKS	ENGINEERING DESIGN SECTION
400 EAST STEWART LAS VEGAS, NV 89101 (702) 229-5276	CITY ENGINEER: CHARLES KAJKOWSKI, JR., P.E. PROJECT MANAGER: THERESA M. HANRAHAN, P.E.
PRIMAS AND ASSOCIATES CONSULTING ENGINEERS	100 CHAMBERLAIN ROAD, SUITE A-3 LAS VEGAS, NV 89115 PHONE: (702) 228-8183 FAX: (702) 228-8184
AZURE DRIVE 12" WATERLINE STA. 1+00 TO 10+00	TENAYA WAY / AZURE DRIVE ROADWAY IMPROVEMENTS
DRAWN BY:	DESIGNED BY:
CHECKED BY:	PROJECT NO.:
SCALE: 1"=40'	HORIZ. VERT. SCALE: 1"=40' 1"=4'
W2 41 OF 70 SHEETS DRAWING NO. 107-V3145	