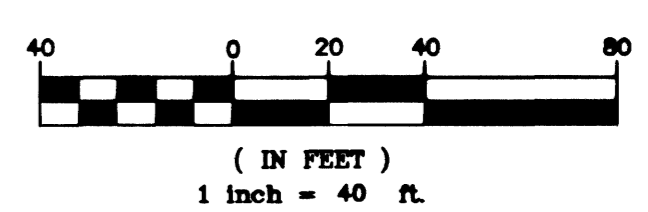


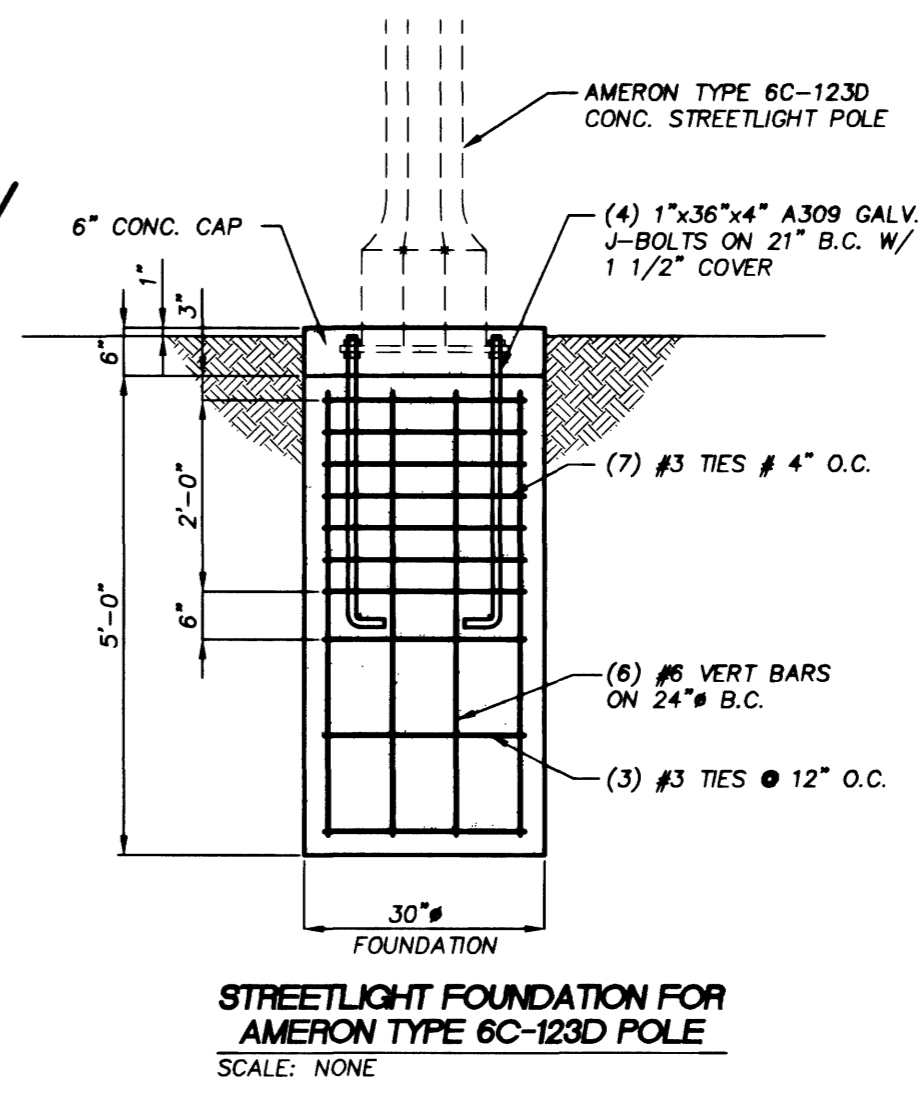
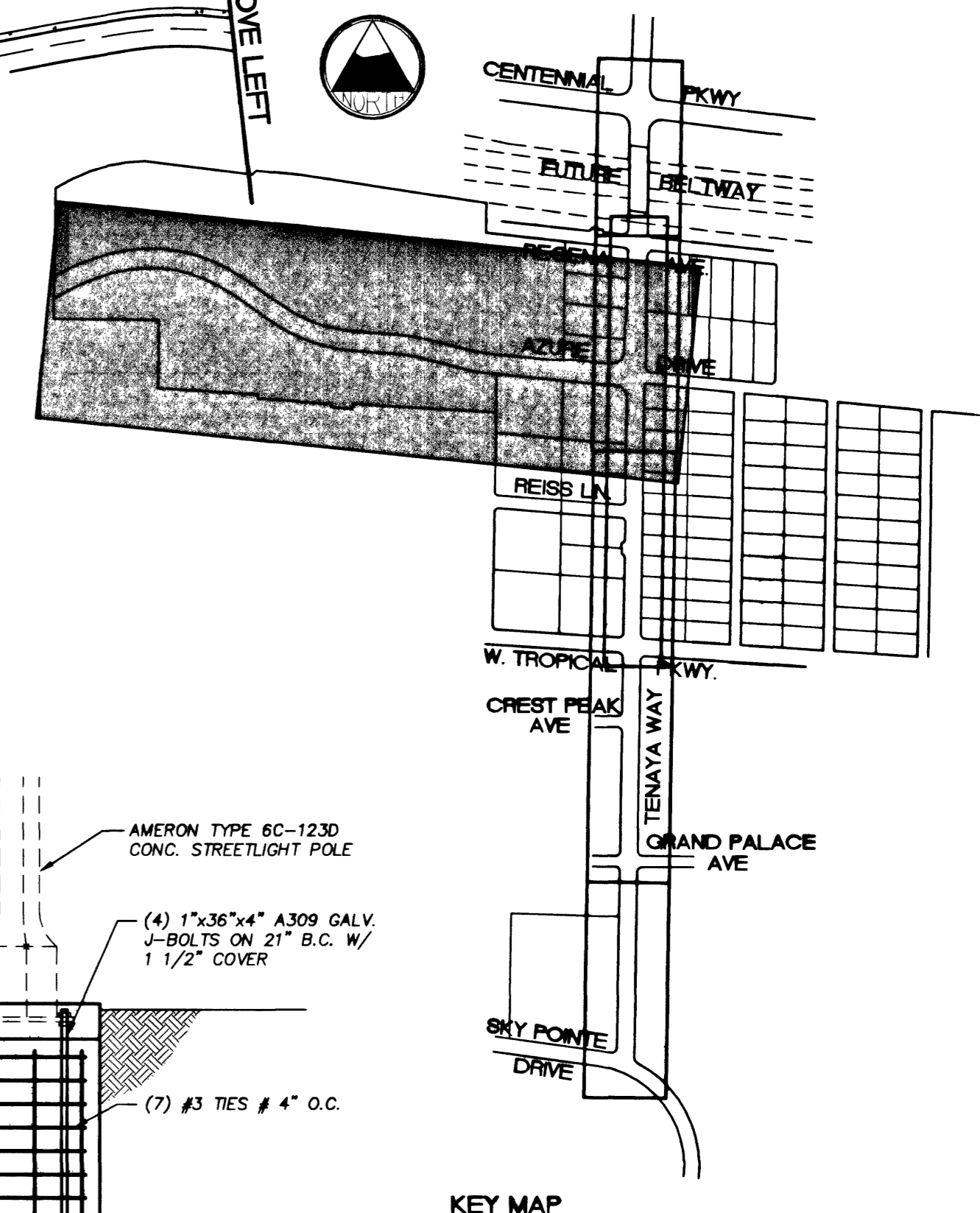
TENAYA WAY
SEE SHEET 31

- CONSTRUCTION NOTES**
- (70) NEW STREET LIGHT ASSEMBLY (SEE TOWN CENTER STANDARDS)
 - (71) TYPE XX-A SIGNAL AND LUMINAIRE POLE WITH 250-WATT HPS LUMINAIRE AND FOUNDATION (SEE SHEET 28)
 - (72) 1 1/2" GAUGE STREET LIGHT ASSEMBLY WITH 250-WATT HPS LUMINAIRE (USD NO 314&321)
 - (73) TYPE XX-A SIGNAL AND LUMINAIRE POLE WITH 400-WATT HPS LUMINAIRE AND FOUNDATION (SEE SHEET 24)
 - (74) TOWN CENTER DOUBLE MAST ARM OVERHEAD STREETLIGHT WITH 250-WATT HPS LUMINAIRE
 - (75) 200 AMP SERVICE PEDESTAL (USD NO 330&332)
 - (76) 125 AMP SERVICE PEDESTAL (USD NO 330&332)
 - (77) NO. 3-1/2 PULLBOX (USD NO 326)
 - (78) NO. 5 PULLBOX (USD NO 326)
 - (79) NO. 7 PULLBOX - INTERCONNECT (USD NO 326)
 - (80) 3" CONDUIT (INTERCONNECT) WITH 25 PAIR #22 WIRE
 - (81) NOT USED
 - (82) 4" PVC CONDUIT FOR STREETLIGHT CIRCUITS WITH 2 #4 THW, 1 #6 THWN



BASIS OF BEARING:
NORTH AMERICAN DATUM - 1983 (NAD'83), NEVADA COORDINATE SYSTEM - 1983 (NCS'83), EAST ZONE (2701), MODIFIED AS SHOWN BY A MAP ON FILE IN THE OFFICE OF THE COUNTY RECORDER, CLARK COUNTY, NEVADA IN FILE 89 OF RECORDS OR SURVEYS, PAGE 3

BENCHMARKS:
#1LV90/27W4, CLV, PLS 2050 AL CAP W/1/4 SEC.27 ELEV. 2381.17 NAVD 88
#1LV90/27N4, CLV, AL CAP, PLS 2984, CENTENNIAL PKWY & TENAYA WAY ELEV. 2356.41 NAVD 88



STREETLIGHT CIRCUIT VERIFICATION
CIRCUIT 3

EXISTING SERVICE POINT CAPACITY =	60 AMPS
MAXIMUM ALLOWABLE DRAW =	48 AMPS
EXISTING CIRCUIT LOAD =	0 AMPS
PROPOSED LUMINAIRE LOAD TO CIRCUIT:	
100W @ 1.0 AMPS =	AMPS
200W @ 1.5 AMPS =	AMPS
22 250W @ 1.5 AMPS =	33 AMPS
400W @ 3.9 AMPS =	AMPS
TOTAL PROPOSED LOAD =	33 AMPS
EXISTING PLUS PROPOSED LOAD =	33
REMAINING AVAILABLE LOAD =	15

STREETLIGHT CIRCUIT VERIFICATION
CIRCUIT 4

EXISTING SERVICE POINT CAPACITY =	60 AMPS
MAXIMUM ALLOWABLE DRAW =	48 AMPS
EXISTING CIRCUIT LOAD =	0 AMPS
PROPOSED LUMINAIRE LOAD TO CIRCUIT:	
100W @ 1.0 AMPS =	AMPS
200W @ 1.5 AMPS =	AMPS
22 250W @ 1.5 AMPS =	33 AMPS
400W @ 3.9 AMPS =	AMPS
TOTAL PROPOSED LOAD =	33 AMPS
EXISTING PLUS PROPOSED LOAD =	33
REMAINING AVAILABLE LOAD =	15

DISCLAIMER NOTE

UTILITY LOCATIONS SHOWN HEREON ARE APPROXIMATE ONLY. IT SHALL BE THE CONTRACTOR'S RESPONSIBILITY TO DETERMINE THE EXACT HORIZONTAL AND VERTICAL LOCATION OF ALL EXISTING UNDERGROUND UTILITIES PRIOR TO COMMENCING CONSTRUCTION. NO REPRESENTATION IS MADE THAT ALL EXISTING UTILITIES ARE SHOWN HEREON. THE ENGINEER ASSUMES NO RESPONSIBILITY FOR UTILITIES NOT SHOWN OR UTILITIES NOT SHOWN IN THEIR PROPER LOCATION.

DEPARTMENT OF PUBLIC WORKS 400 EAST STEWART LAS VEGAS NV, 89101 (702) 229-5276	CITY ENGINEER: CHARLES KAJKOWSKI, JR., P.E. PROJECT MANAGER: THERESA M. HANRAHAN, P.E.	101 CHARSON ROAD, SUITE A-3 LAS VEGAS, NV 89149 PHONE: (702) 228-8183 FAX: (702) 228-8184	PRIMAS AND ASSOCIATES ENGINEERING 	ENGINEERING DESIGN SECTION TITLE: TENAYA WAY / AZURE DRIVE ROADWAY IMPROVEMENTS SHEET: AZURE DRIVE STREET LIGHTING PLAN DRAWN BY: [Signature] DESIGNED BY: [Signature] CHECKED BY: [Signature] PROJECT NO.: 107.01.001 SCALE: 1"=40' HORIZ 1"=4' VERT DWG NO.: 107-V3145	REVISION NO. 1 DATE: 1/14/02 BY: KJ APPENDIX NO. 4
---	---	--	--	---	--