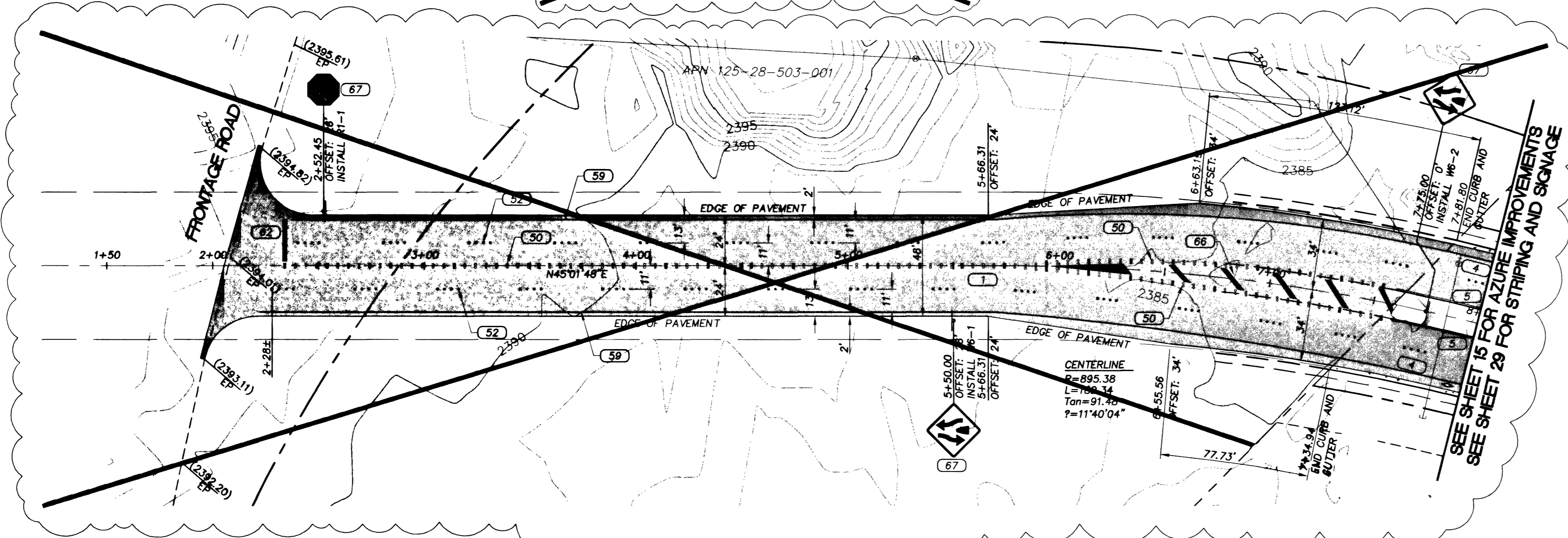


NOTE:
 THIS PLAN IS INTENDED FOR HORIZONTAL INFORMATION ONLY. TEMPORARY PAVEMENT FROM 7+59.52 TO THE EXISTING FRONTAGE ROAD ALIGNMENT. PRIMAS AND ASSOCIATES ASSUMES NO RESPONSIBILITY FOR ANY VERTICAL DESIGN OR GRADING DEFICIENCIES. GRADING IN THIS AREA TO BE DONE UNDER THE DIRECT SUPERVISION AND INSPECTION OF THE CITY OF LAS VEGAS. CONTRACTOR TO ENSURE EXISTING DRAINAGE PATTERNS TO BE MAINTAINED AND TO ENSURE NO ADVERSE IMPACTS TO ADJOINING LANDOWNERS.



- CONSTRUCTION NOTES**
- PAVING IMPROVEMENTS**
- 1) CONSTRUCT BITUMINOUS SURFACE WITH TYPE II AGGREGATE BASE. (SEE SHEET 9)
 - 2) CONSTRUCT 5' CONCRETE SIDEWALK (USD NO 235)
 - 3) CONSTRUCT SIDEWALK RAMP, CASE I OR II (USD NO 235)
 - 4) CONSTRUCT "L" TYPE CURB AND GUTTER (USD NO 218)
 - 5) CONSTRUCT "A" TYPE CURB (USD NO 219)
 - 6) CONSTRUCT TACK-ON MEDIAN CURB (USD NO 220)
 - 7) CONSTRUCT CONCRETE CROSS GUTTER (USD NO 228)
 - 8) CONSTRUCT RESIDENTIAL DRIVEWAY (USD NO 223)
 - 9) CONSTRUCT PRIVATE STREET (USD NO 225)
 - 10) CONSTRUCT PLANT MIX BITUMINOUS OVERLAY (SEE SHEET 8)
 - 11) CONSTRUCT DEPRESSED CURB FOR FUTURE HANDICAP RAMP
- TRAFFIC STRIPING**
- 50) TYPE 1 CENTERLINE (USD NO 744)
 - 52) TYPE 4 LANE LINE (USD NO 444)
 - 59) 6" WIDE SOLID WHITE LINE (PMF)
 - 62) 24" WIDE STOP BAR (PMF)
 - 66) TYPICAL LANE DELINEATION IN TRANSITION AREA PER STD. DWG. 45 (1 OF 3)
 - 67) INSTALL TRAFFIC SIGN

- LEGEND**
- [Symbol] LIMITS OF NEW AC PAVEMENT
 - [Symbol] LIMITS OF AC PAVEMENT REMOVAL
 - [Symbol] LIMITS OF NEW CONCRETE
- SIGN LEGEND**
- [Symbol] R1-1
 - [Symbol] W6-1
 - [Symbol] R4-7
 - [Symbol] W6-2

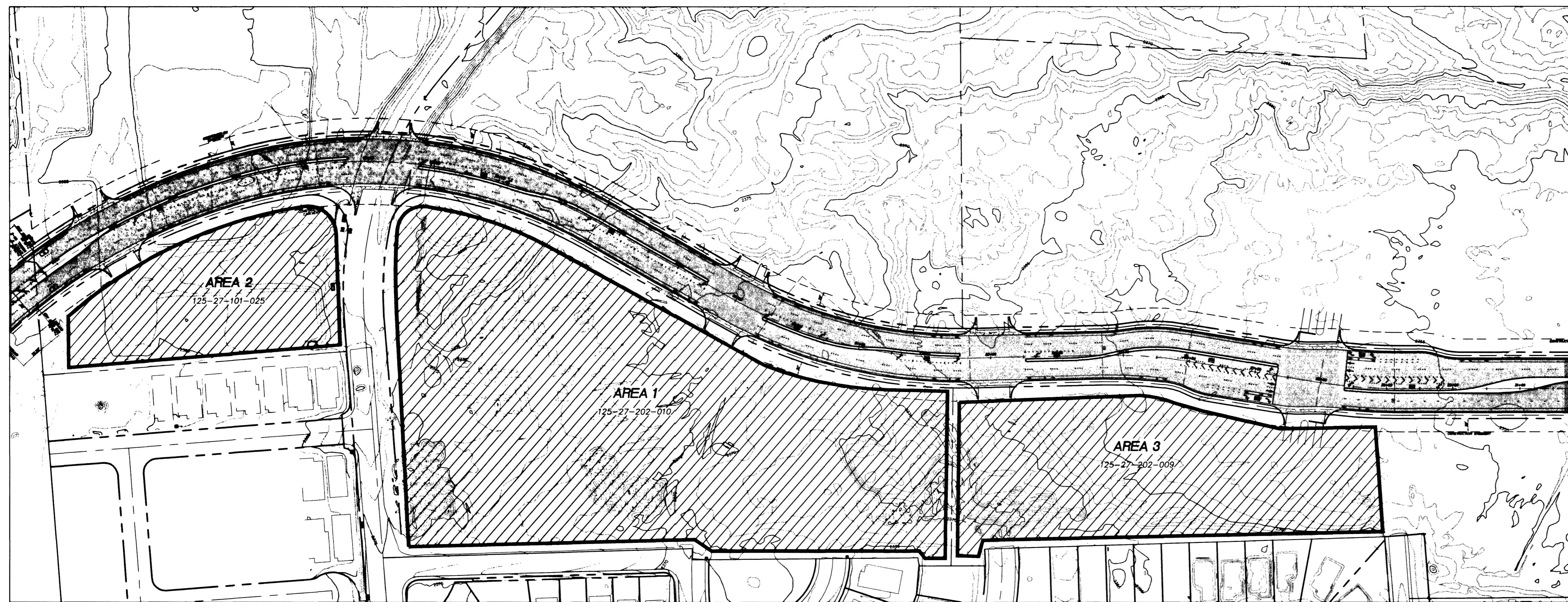
BASIS OF BEARING

NORTH AMERICAN DATUM - 1983 (NAD'83), NEVADA COORDINATE SYSTEM - 1983 (NCS'83), EAST ZONE (2701), MODIFIED AS SHOWN BY A MAP ON FILE IN THE OFFICE OF THE COUNTY RECORDER, CLARK COUNTY, NEVADA IN FILE 89 OF RECORDS OR SURVEYS, PAGE 3

BENCHMARKS

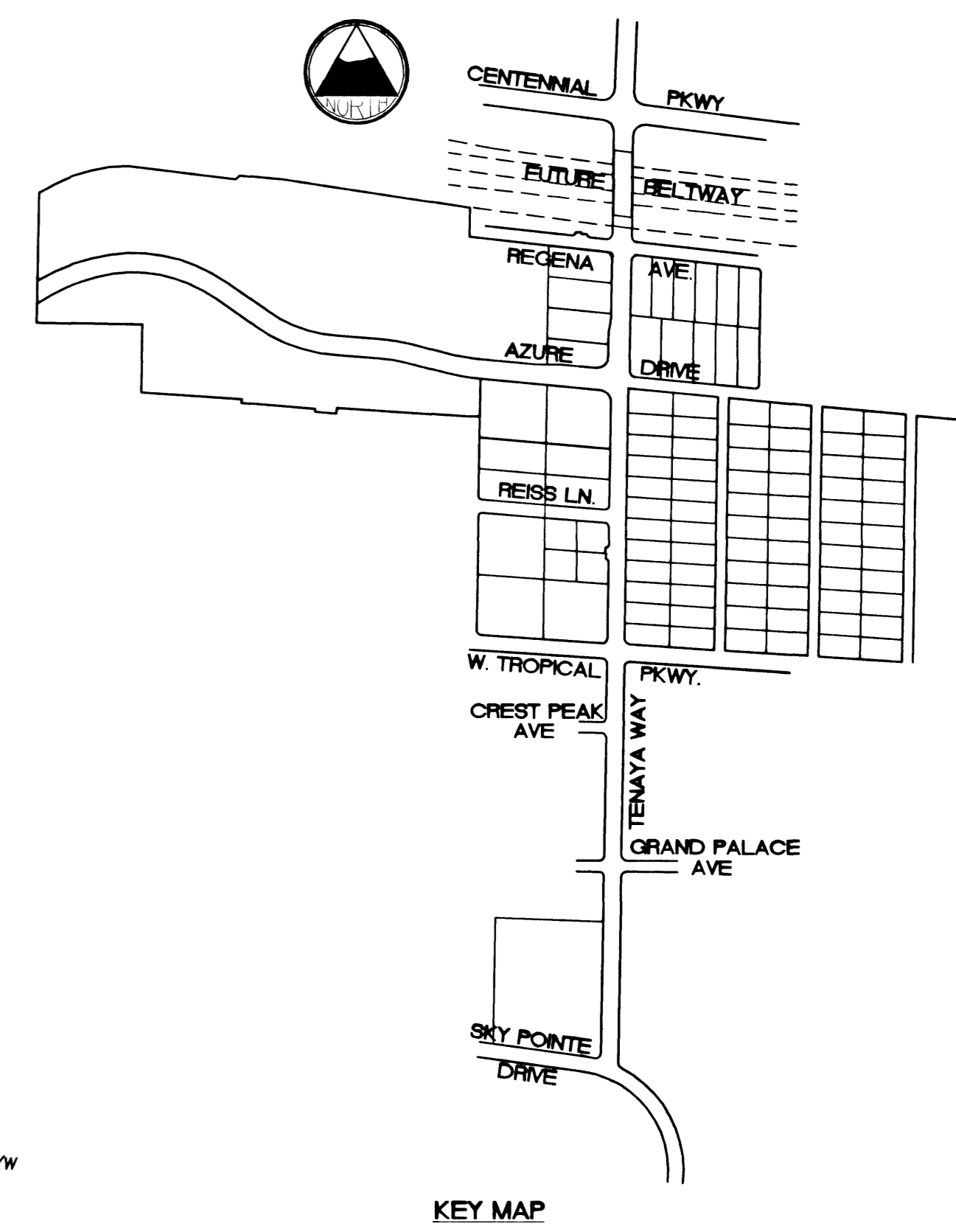
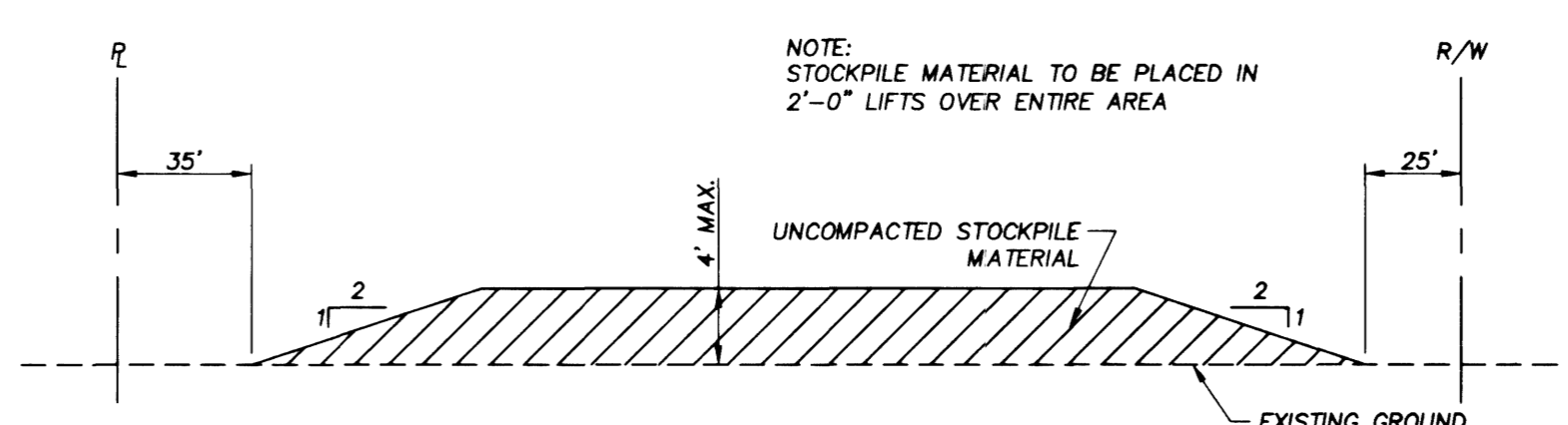
#1190/2774, CLV, PLS 2050 AL CAP W1/4 SEC.27
 ELEV. 2381.17 NAVD 88

#1190/2774, CLV, AL CAP, PLS 2884,
 CENTENNIAL PKWY & TENAYA WAY
 ELEV. 2356.41 NAVD 88



STOCK PILE EXHIBIT - AZURE DRIVE
 SCALES: 1"=100'

NOTE:
 EXCESS EARTHWORK TO BE STOCKPILED IN AREA 1. IF ADDITIONAL AREA IS REQUIRED, AREA 2 WILL BE USED. AREA 3 SHALL BE USED IF AREA 1 AND AREA 2 ARE NOT SUFFICIENT.



DISCLAIMER NOTE

UTILITY LOCATIONS SHOWN HEREON ARE APPROXIMATE ONLY. IT SHALL BE THE CONTRACTOR'S RESPONSIBILITY TO DETERMINE THE EXACT HORIZONTAL AND VERTICAL LOCATION OF ALL EXISTING UNDERGROUND UTILITIES PRIOR TO COMMENCING CONSTRUCTION. NO REPRESENTATION IS MADE THAT ALL EXISTING UTILITIES ARE SHOWN HEREON. THE ENGINEER ASSUMES NO RESPONSIBILITY FOR UTILITIES NOT SHOWN OR UTILITIES NOT SHOWN IN THEIR PROPER LOCATION.

44212

DEPARTMENT OF PUBLIC WORKS ENGINEERING DESIGN SECTION CITY ENGINEER: CHARLES KAIKOWSKI, JR., P.E. PROJECT MANAGER: THERESA M. HANRAHAN, P.E.	1081 CHARON ROAD, SUITE A-3 LAS VEGAS, NV 89101 PHONE: (702) 228-8183 FAX: (702) 228-8184
PRIMAS AND ASSOCIATES CONSULTING ENGINEERS	REVISION
AZURE DRIVE TEMPORARY PAVEMENT PLAN STA. 1+00 TO 8+00	TENAYA WAY / AZURE DRIVE ROADWAY IMPROVEMENTS
DRAWN BY: _____	CHECKED BY: _____
DESIGNED BY: _____	SCALE: 1"=40' HORIZ 1"=4' VERT
PROJECT NO.: 907.01001	SHEET 95 OF 70 SHEETS
SEAL	DRAWING NO. 107-V3145

F:\PROJECTS\9907_01\azure-pavmfg.dwg 01/06/2002 12:01:02 PM PST