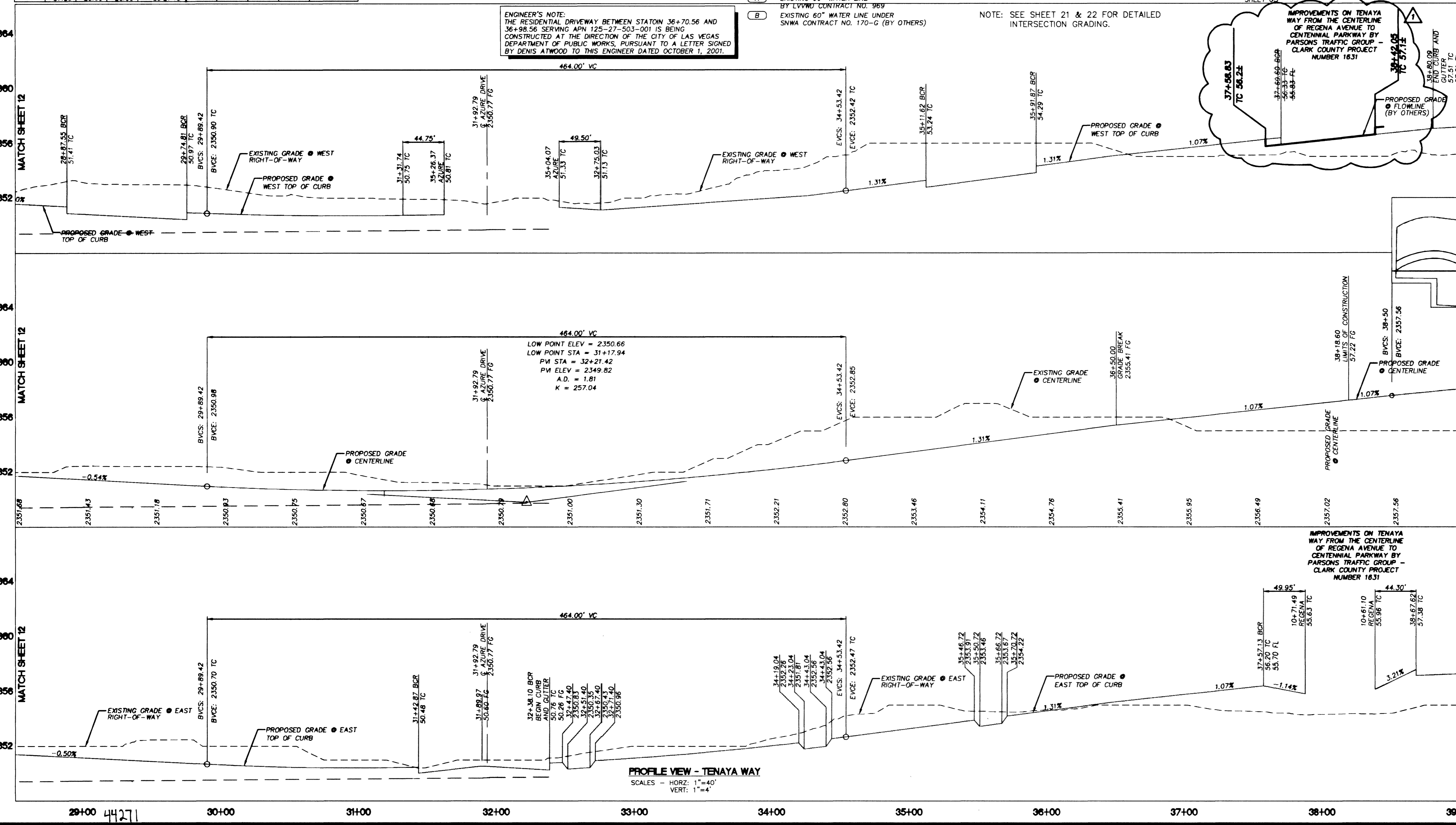


CURVE	LENGTH	RADIUS	TANGENT	DELTA	CURVE	LENGTH	RADIUS	TANGENT	DELTA
C12	49.95'	30.00'	32.97'	95°23'41"	C22	49.50'	30.00'	32.47'	94°32'06"
C13	44.30'	30.00'	27.30'	84°36'08"	C23	44.75'	30.00'	27.71'	85°27'54"
C14	4.71'	-1.60'	-	180°00'00"	C24	4.71'	1.50'	-	180°00'00"
C15	50.08'	250.00'	25.13'	117°28'42"	C25	41.78'	100.00'	16.01'	187°11'42"
C16	50.08'	250.00'	25.13'	117°28'42"	C26	41.78'	100.00'	16.01'	187°11'42"
C17	50.08'	250.00'	25.13'	117°28'42"	C27	41.78'	100.00'	16.01'	187°11'42"
C18	50.08'	250.00'	25.13'	117°28'42"	C28	41.78'	100.00'	16.01'	187°11'42"
C19	4.71'	1.50'	-	179°59'59"	C37	37.29'	25.00'	23.09'	85°27'43"
C20	41.25'	25.00'	27.06'	94°32'20"	C38	41.25'	25.00'	27.06'	94°32'17"
C21	37.29'	25.00'	23.09'	85°27'15"					



- ### CONSTRUCTION NOTES
- #### PAVING IMPROVEMENTS
- CONSTRUCT BITUMINOUS SURFACE WITH TYPE II AGGREGATE BASE. (SEE SHEET 8)
  - CONSTRUCT 5' CONCRETE SIDEWALK (USD NO 235)
  - CONSTRUCT SIDEWALK RAMP, CASE I OR III (USD NO 235)
  - CONSTRUCT "L" TYPE CURB AND GUTTER (USD NO 216)
  - CONSTRUCT "A" TYPE CURB (USD NO 219)
  - CONSTRUCT TACK-ON MEDIAN ISLAND (USD NO 221)
  - CONSTRUCT CONCRETE CROSS GUTTER (USD NO 228)
  - CONSTRUCT HALF STREET CROSS GUTTER (USD NO 229)
  - CONSTRUCT RESIDENTIAL DRIVEWAY (USD NO 223)
  - CONSTRUCT PRIVATE STREET (USD NO 225)
  - CONSTRUCT PLANT MIX BITUMINOUS OVERLAY (SEE SHEET 8)
  - CONSTRUCT DEPRESSED CURB FOR FUTURE HANDICAP RAMP
- #### REMOVALS
- SAWCUT TO CLEAN EDGE
  - REMOVE EXISTING ASPHALT
  - REMOVE EXISTING CONCRETE
  - REMOVE EXISTING CURB
  - REMOVE EXISTING SIGN
- #### RELOCATIONS
- ADJUST UTILITY MANHOLE/VAULT TO GRADE
  - ADJUST MANHOLE COVER TO GRADE (USD NO 408)
  - ADJUST VALVE BOX COVER TO GRADE (UDACS STD PLATE NO 8)
  - NOT USED
  - RELOCATE DRY UTILITY (BY GOVERNING AGENCY)
  - RELOCATE TRAFFIC SIGN
- #### BASIS OF BEARING
- NORTH AMERICAN DATUM - 1983 (NAD83), NEVADA COORDINATE SYSTEM - 1983 (NCS83), EAST ZONE (2701), MODIFIED AS SHOWN BY A MAP ON FILE IN THE OFFICE OF THE COUNTY RECORDER, CLARK COUNTY, NEVADA IN FILE 89 OF RECORDS OR SURVEYS, PAGE 3
- #### BENCHMARKS
- #1190/2774, CLV, PLS 2050 AL CAP W/4 SEC.27 ELEV. 2381.17 NAVD 88  
 #1190/2774, CLV AL CAP, PLS 2984, CENTENNIAL PKWY & TENAYA WAY ELEV. 2356.41 NAVD 88
- APPROVED FOR CONSTRUCTION
- DATE: 4/10/02  
 DATE: 5/31/02

ENGINEERING DESIGN SECTION

ENGINEER: CHARLES KAIKOWSKI, JR., P.E.  
 PROJECT MANAGER: THERESA M. HARRAHAN, P.E.

DEPARTMENT OF PUBLIC WORKS  
 400 EAST STEWART  
 LAS VEGAS, NV 89101  
 (702) 229-3276

PRIMAS AND ASSOCIATES  
 CONSULTING ENGINEERS  
 101 CHARLTON ROAD, SUITE A-3  
 LAS VEGAS, NV 89102  
 (702) 228-8184  
 FAX (702) 228-8184

SHEET 84 OF 70 SHEETS

DRAWING NO. 107-V3145

ADDENDUM NO. 5

F:\PROJECTS\9987\_01\9987-01.dwg 10/02/2001 04:00:46 PM PDT  
 107-V3145