

CONSTRUCTION NOTES

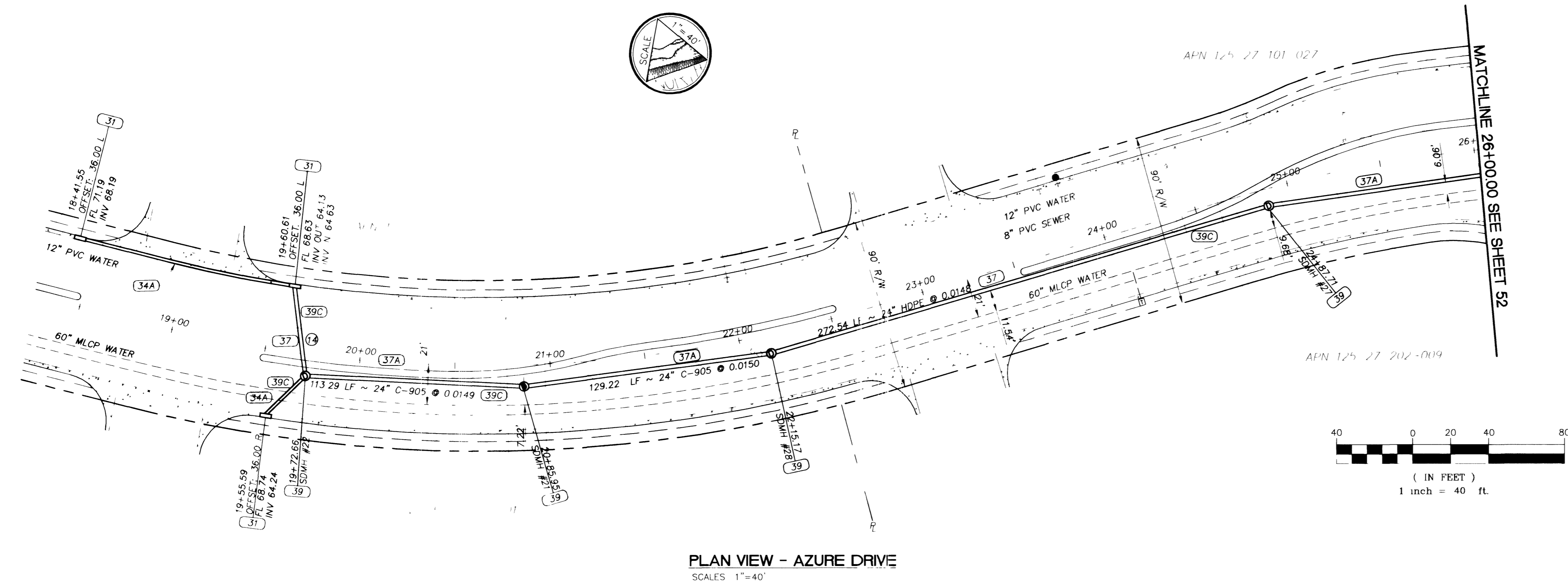
- STORM DRAIN IMPROVEMENTS**
- (30) CONSTRUCT DROP INLET TYPE "CM1" (SHEET SDD1)
 - (31) CONSTRUCT DROP INLET TYPE "PC2" (SHEET SDD2)
 - (31A) CONSTRUCT DROP INLET TYPE "PC3" (SHEET SDD2)
 - (32) CONSTRUCT 6'x4' RCB
 - (33) CONSTRUCT 48" SMOOTH LINED HDPE (WATER TIGHT JOINTS)
 - (34) CONSTRUCT 27" SMOOTH LINED HDPE (WATERTIGHT JOINTS)
 - (34A) CONSTRUCT 18" SMOOTH LINED HDPE
 - (35) CONSTRUCT 6'x4' 45° BEND (SHEET SDD1)
 - (36) CONSTRUCT 36" SMOOTH LINED HDPE (WATERTIGHT JOINTS)
 - (37) CONSTRUCT 24" SMOOTH LINED HDPE (WATERTIGHT JOINTS)
 - (37A) CONSTRUCT 24" C-905 WATER QUALITY PIPE
 - (38) CONSTRUCT 48" MANHOLE (CCSD STD DWG SD-1)
 - (39) CONSTRUCT 60" MANHOLE (CCSD STD DWG SD-1)
 - (39C) CONCRETE ENCASE STORM DRAIN 10' EACH SIDE OF CROSSING
- ① INDICATES STORM DRAIN LATERAL NUMBER
 SEE SHEET SDB - STORM DRAIN LATERAL PROFILES

BASIS OF BEARING:

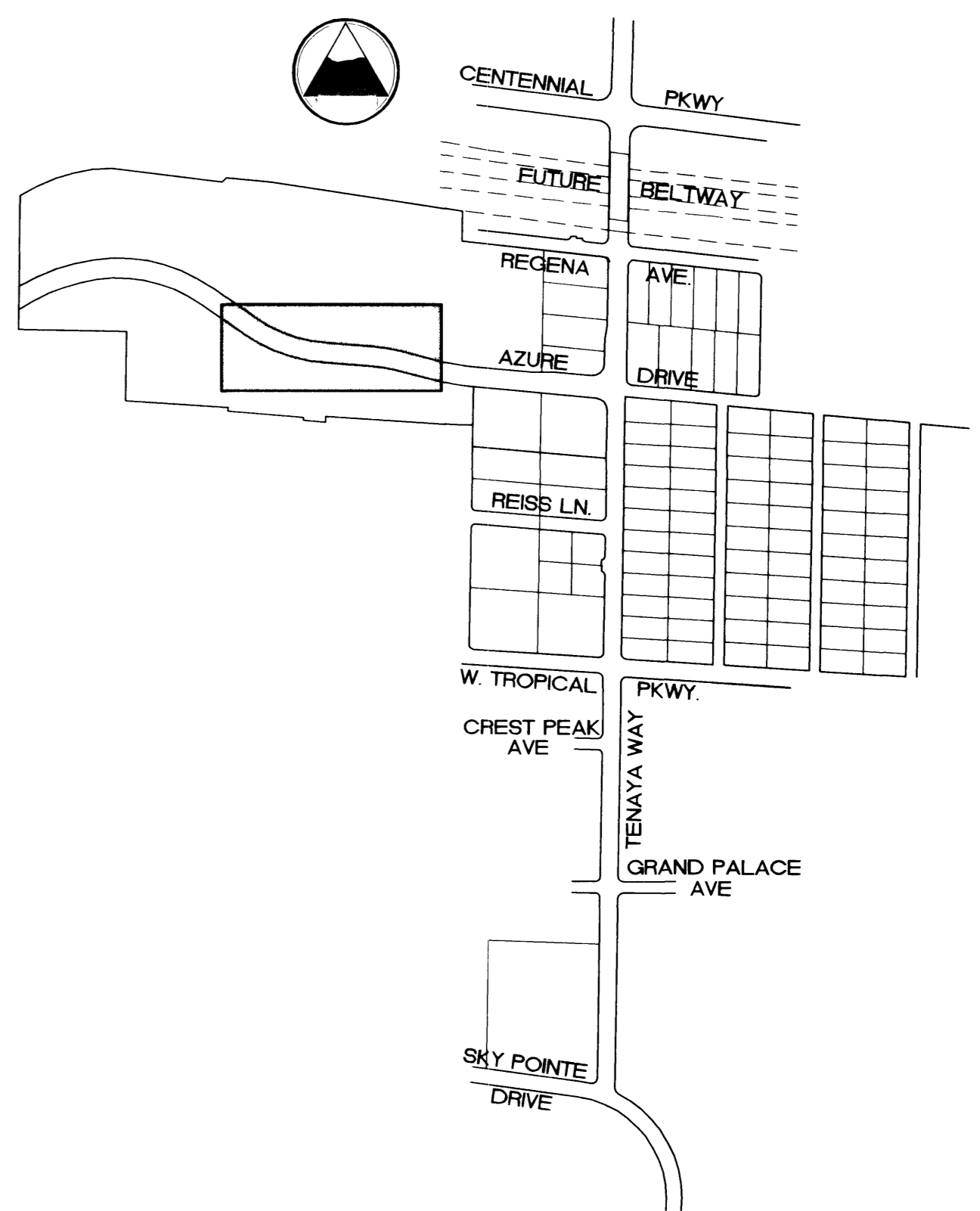
NORTH AMERICAN DATUM - 1983 (NAD'83), NEVADA COORDINATE SYSTEM - 1983 (NCS'83), EAST ZONE (2701), MODIFIED AS SHOWN BY A MAP ON FILE IN THE OFFICE OF THE COUNTY RECORDER, CLARK COUNTY, NEVADA IN FILE 89 OF RECORDS OR SURVEYS, PAGE 3

BENCHMARKS:

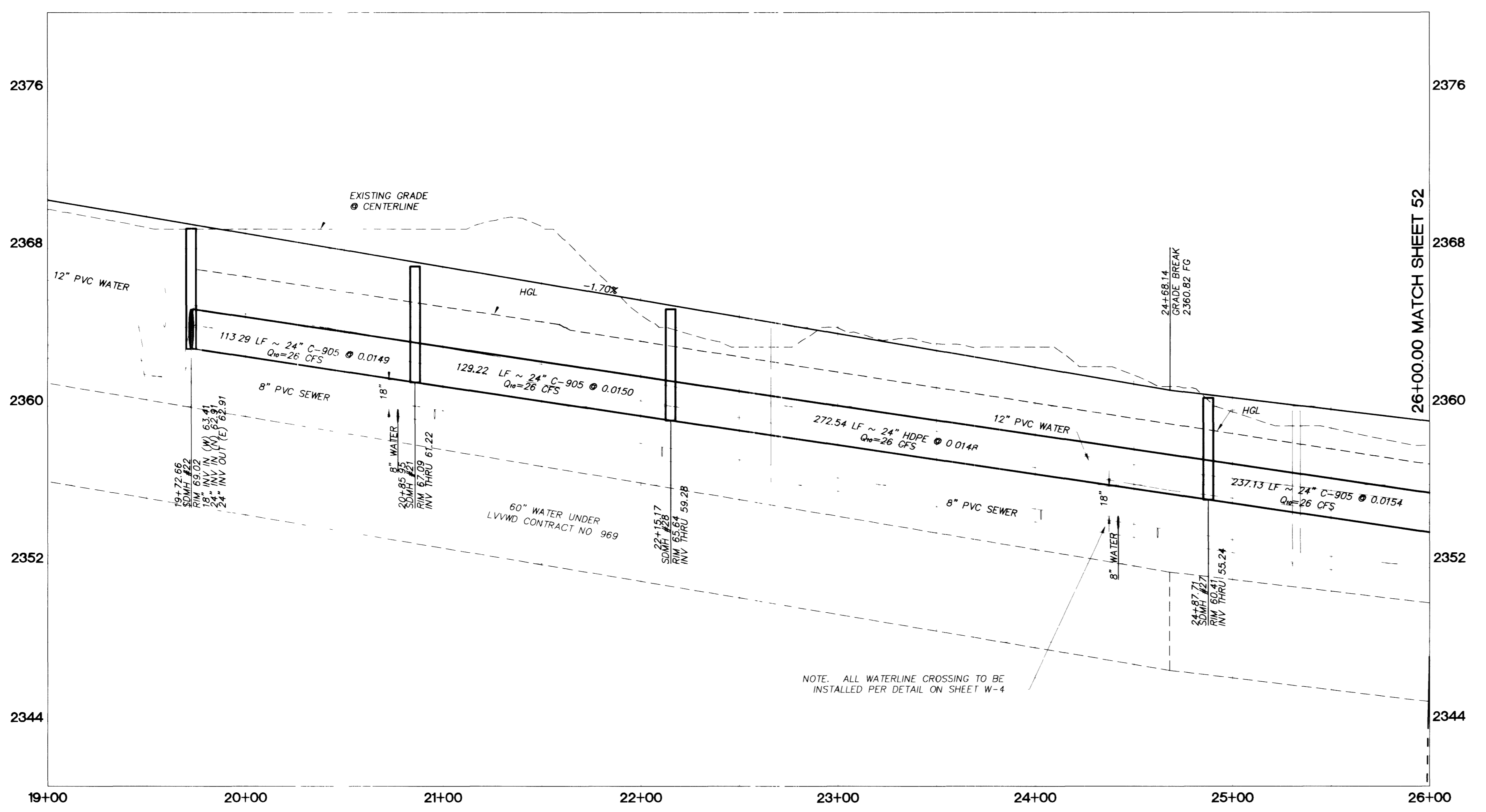
#1LV90/27W4, CLV, PLS 2050 AL CAP W1/4 SEC 27
 ELEV 2381.17 NAVD 88
 #1LV90/27N4, CLV, AL CAP, PLS 2984,
 CENTENNIAL PKWY & TENAYA WAY
 ELEV. 2356.41 NAVD 88



PLAN VIEW - AZURE DRIVE
 SCALES 1"=40'



KEY MAP
 APPROVED FOR CONSTRUCTION



PROFILE VIEW - AZURE DRIVE
 SCALES - HORIZ 1"=40'
 VERT 1"=4'

DISCLAIMER NOTE

UTILITY LOCATIONS SHOWN HEREON ARE APPROXIMATE ONLY. IT SHALL BE THE CONTRACTOR'S RESPONSIBILITY TO DETERMINE THE EXACT HORIZONTAL AND VERTICAL LOCATION OF ALL EXISTING UNDERGROUND UTILITIES PRIOR TO COMMENCING CONSTRUCTION. NO REPRESENTATION IS MADE THAT ALL EXISTING UTILITIES ARE SHOWN HEREON. THE ENGINEER ASSUMES NO RESPONSIBILITY FOR UTILITIES NOT SHOWN OR UTILITIES NOT SHOWN IN THEIR PROPER LOCATION.

<p>DEPARTMENT OF PUBLIC WORKS ENGINEERING DESIGN SECTION 400 EAST STEWART LAS VEGAS NV, 89101 (702) 229-5276</p> <p>CITY ENGINEER: CHARLES KAJKOWSKI, JR., P.E. PROJECT MANAGER: THERESA M. HANRAHAN, P.E.</p> <p>PRIMAS AND ASSOCIATES CONSULTING ENGINEERS 1081 CHARLTON ROAD, SUITE A-3 LAS VEGAS, NV 702 228-8183 PHONE (702) 228-8183 FAX (702) 228-8194</p>	<p>REVISION</p> <table border="1"> <tr> <th>NO.</th> <th>DATE</th> <th>BY</th> </tr> <tr> <td> </td> <td> </td> <td> </td> </tr> </table>	NO.	DATE	BY			
NO.	DATE	BY					
<p>SHEET AZURE DRIVE STORM DRAIN STATION 19+00 TO 26+00</p> <p>TITLE TENAYA WAY / AZURE DRIVE ROADWAY IMPROVEMENTS</p>	<p>SCALE: 1"=40' HORIZ 1"=4' VERT</p>						
<p>DRAWN BY: _____</p> <p>DESIGNED BY: _____</p> <p>CHECKED BY: _____</p> <p>PROJECT NO.: SD07.01001</p>	<p>SEAL</p> <p>REGISTERED PROFESSIONAL ENGINEER STATE OF NEVADA CIVIL NO. 6638 (HAI & LIMA) P.E. R.P.E. N. F.F. JR.</p>						
<p>LAS VEGAS VALLEY WATER DISTRICT</p> <p>DATE: _____</p>	<p>DRAWING NO. SD5 51 OF 70 SHEETS 107-V3145</p>						