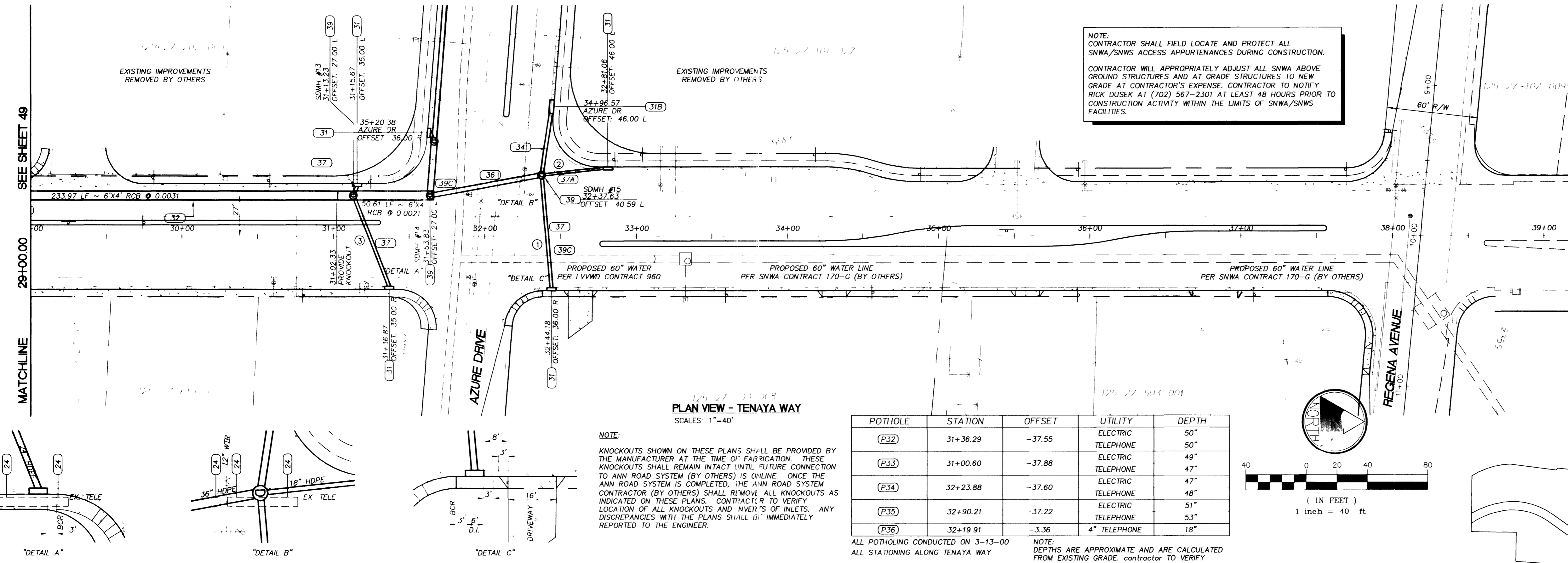


AZURE DRIVE
SEE SHEET 52

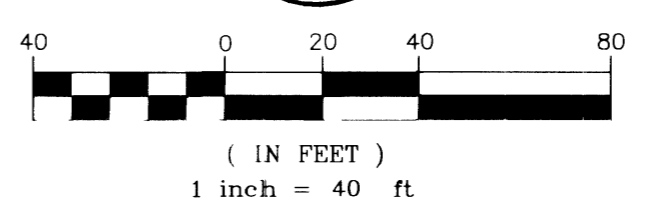


NOTE:
CONTRACTOR SHALL FIELD LOCATE AND PROTECT ALL SNWA/SNWS ACCESS APPURTENANCES DURING CONSTRUCTION.
CONTRACTOR WILL APPROPRIATELY ADJUST ALL SNWA ABOVE GROUND STRUCTURES AND AT GRADE STRUCTURES TO NEW GRADE AT CONTRACTOR'S EXPENSE. CONTRACTOR TO NOTIFY RICK DUSEK AT (702) 567-2301 AT LEAST 48 HOURS PRIOR TO CONSTRUCTION ACTIVITY WITHIN THE LIMITS OF SNWA/SNWS FACILITIES.

NOTE:
KNOCKOUTS SHOWN ON THESE PLANS SHALL BE PROVIDED BY THE MANUFACTURER AT THE TIME OF FABRICATION. THESE KNOCKOUTS SHALL REMAIN INTACT UNTIL FUTURE CONNECTION TO ANN ROAD SYSTEM (BY OTHERS) IS ONLINE. ONCE THE ANN ROAD SYSTEM IS COMPLETED, THE ANN ROAD SYSTEM CONTRACTOR (BY OTHERS) SHALL REMOVE ALL KNOCKOUTS AS INDICATED ON THESE PLANS. CONTRACTOR TO VERIFY LOCATION OF ALL KNOCKOUTS AND INVERTS OF INLETS. ANY DISCREPANCIES WITH THE PLANS SHALL BE IMMEDIATELY REPORTED TO THE ENGINEER.

POT HOLE	STATION	OFFSET	UTILITY	DEPTH
(P32)	31+36.29	-37.55	ELECTRIC	50"
(P33)	31+00.60	-37.88	TELEPHONE	50"
(P34)	32+23.88	-37.60	ELECTRIC	47"
(P35)	32+90.21	-37.22	TELEPHONE	47"
(P36)	32+19.91	-3.36	4" TELEPHONE	18"

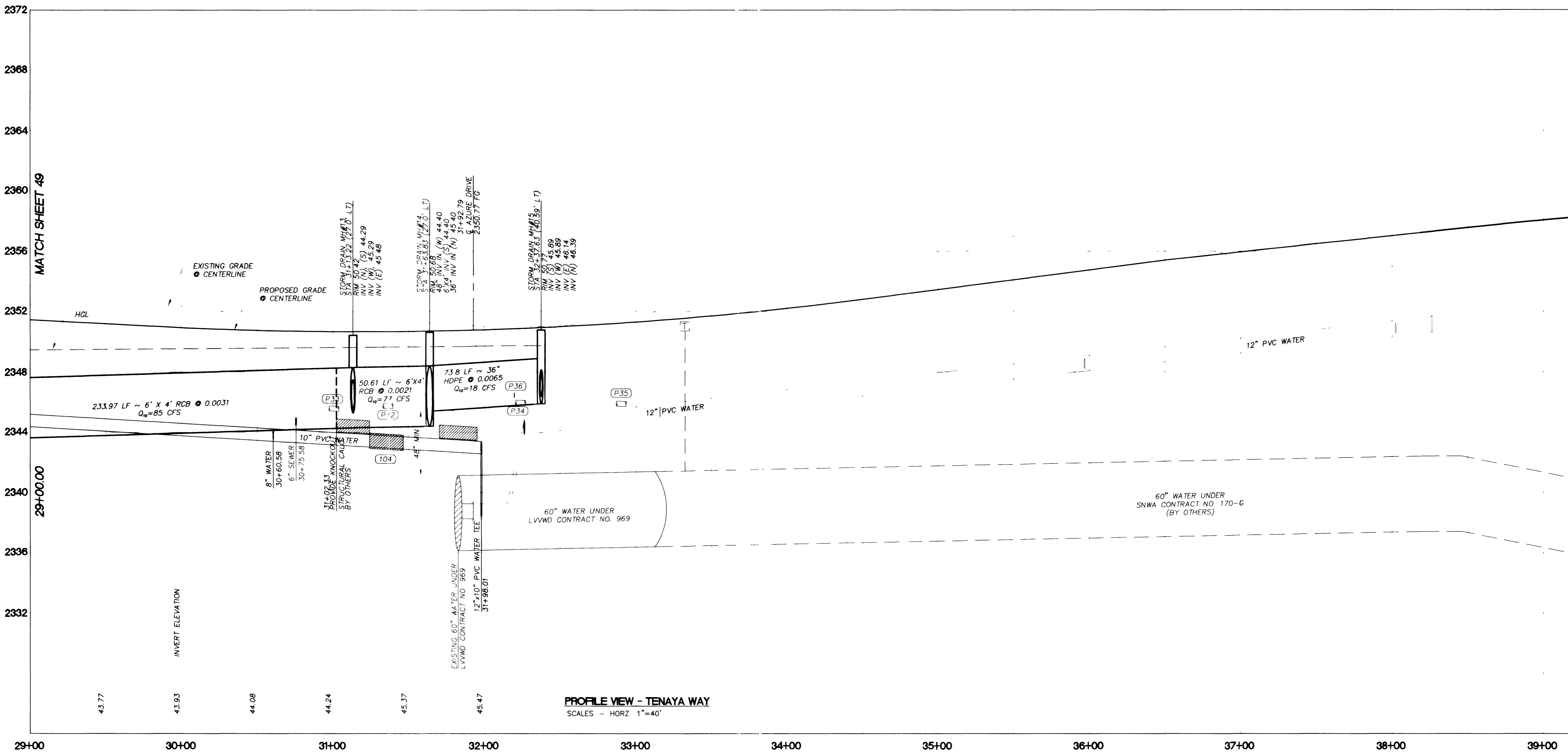
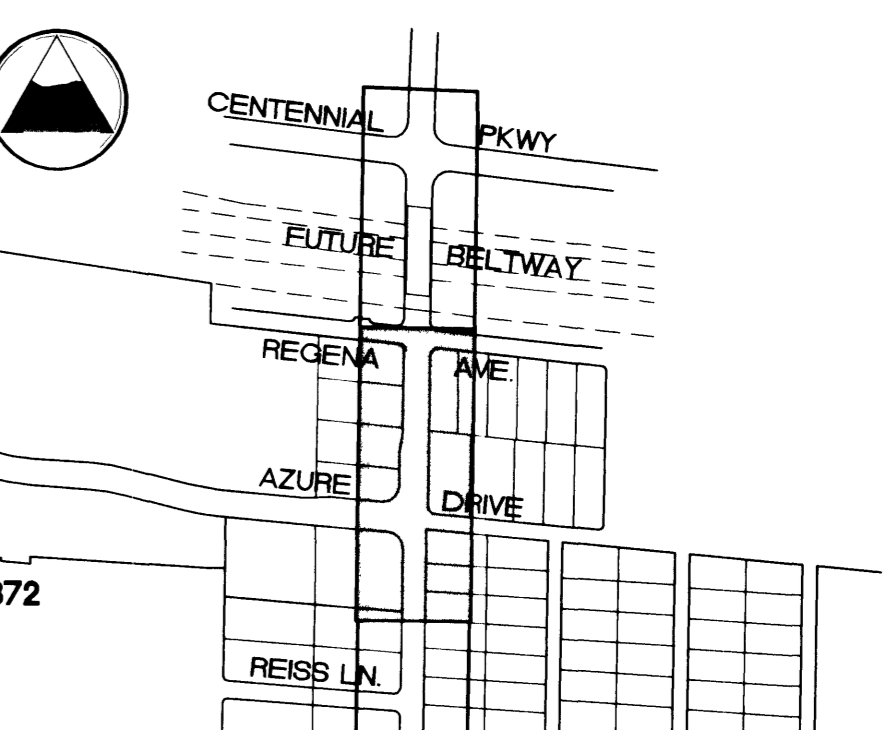
ALL POT HOLING CONDUCTED ON 3-13-00
ALL STATIONING ALONG TENAYA WAY
NOTE: DEPTHS ARE APPROXIMATE AND ARE CALCULATED FROM EXISTING GRADE. CONTRACTOR TO VERIFY ELEVATIONS



- CONSTRUCTION NOTES**
RELOCATIONS
- (24) RELOCATE DRY UTILITY (BY OTHERS)
- STORM DRAIN IMPROVEMENTS**
- (30) CONSTRUCT DROP INLET TYPE 'CM1' (SHEET SDD1)
 - (31) CONSTRUCT DROP INLET TYPE 'PC2' (SHEET SDD2)
 - (31A) CONSTRUCT DROP INLET TYPE 'PC3' (SHEET SDD2)
 - (31B) CONSTRUCT MODIFIED DROP INLET 'PC3' (SHEET SDD2)
 - (32) CONSTRUCT 6"x4" RCB
 - (33) CONSTRUCT 48" SMOOTH LINED HDPE
 - (34) CONSTRUCT 27" SMOOTH LINED HDPE
 - (35) CONSTRUCT 6"x4" 45' BEND (SHEET SDD1)
 - (36) CONSTRUCT 36" SMOOTH LINED HDPE
 - (37) CONSTRUCT 24" SMOOTH LINED HDPE
 - (37A) CONSTRUCT 18" SMOOTH LINED HDPE
 - (38) CONSTRUCT 48" MANHOLE (CCSD STD DWG SD-1)
 - (39) CONSTRUCT 60" MANHOLE (CCSD STD DWG SD-1)
 - (39A) PROVIDE KNOCKOUT PER DETAIL (SHEET SDD2)
 - (39B) PROVIDE 36" KNOCKOUT PER MH DETAIL SHEET SDD1
 - (39C) CONCRETE ENCASE STORM DRAIN 10' EACH SIDE OF CROSSING
 - (4) INDICATES STORM DRAIN LATERAL NUMBER
SEE SHEET SD7 - STORM DRAIN LATERAL PROFILES

BASIS OF BEARING:
NORTH AMERICAN DATUM - 1983 (NAD'83), NEVADA COORDINATE SYSTEM - 1983 (NCS'83), EAST ZONE (2701), MODIFIED AS SHOWN BY A MAP ON FILE IN THE OFFICE OF THE COUNTY RECORDER, CLARK COUNTY, NEVADA IN FILE 89 OF RECORDS OR SURVEYS, PAGE 3

BENCHMARKS:
#1190/2774, CLV, PLS 2050 AL CAP W1/4 SEC.27
ELEV. 2381.17 NAVD 88
#1190/2774, CLV, AL CAP, PLS 2984,
CENTENNIAL PKWY & TENAYA WAY
ELEV. 2356.41 NAVD 88



PROFILE VIEW - TENAYA WAY
SCALES - HORZ 1"=40'

KEY MAP

APPROVED FOR CONSTRUCTION

LAS VEGAS VALLEY WATER DISTRICT DATE

SOUTHERN NEVADA WATER AUTHORITY DATE

DISCLAIMER NOTE

UTILITY LOCATIONS SHOWN HEREON ARE APPROXIMATE ONLY. IT SHALL BE THE CONTRACTOR'S RESPONSIBILITY TO DETERMINE THE EXACT HORIZONTAL AND VERTICAL LOCATION OF ALL EXISTING UNDERGROUND UTILITIES PRIOR TO COMMENCING CONSTRUCTION. NO REPRESENTATION IS MADE THAT ALL EXISTING UTILITIES ARE SHOWN HEREON. THE ENGINEER ASSUMES NO RESPONSIBILITY FOR UTILITIES NOT SHOWN OR UTILITIES NOT SHOWN IN THEIR PROPER LOCATION.

DEPARTMENT OF PUBLIC WORKS
ENGINEERING DESIGN SECTION
CITY ENGINEER: CHARLES KAJKOWSKI, JR., P.E.
PROJECT MANAGER: THERESA M. HANRAHAN, P.E.

1081 CHARLTON ROAD, SUITE A-3
LAS VEGAS, NV 89101
PHONE: (702) 228-8183
FAX: (702) 228-8184

PRIMAS AND ASSOCIATES
CONSULTING ENGINEERS

TENAYA WAY STORM DRAIN STATION 29+00 TO 33+00

TENAYA WAY / AZURE DRIVE ROADWAY IMPROVEMENTS

SCALE: 1"=40' HORZ
1"=4' VERT

PROJECT NO: SD7.01001

SEAL
PROFESSIONAL ENGINEER, STATE OF NEVADA
CRAG FRANK
11/15/01
No. 6638

SHEET
SD4
50 OF 70 SHEETS
DRAWING NO.
107-V3145