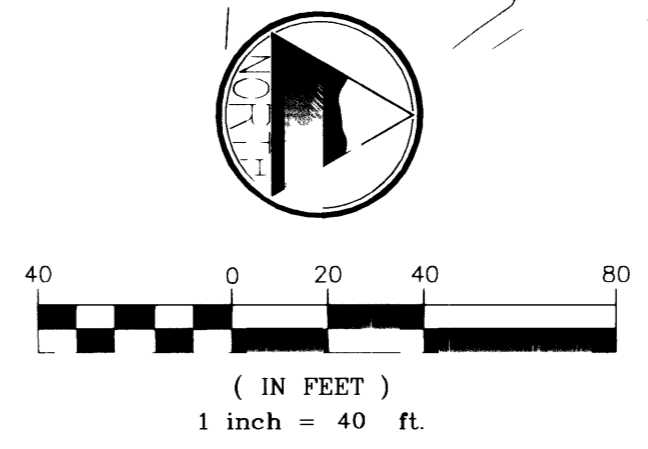


PLAN VIEW - TENAYA WAY
SCALE: 1"=40'

POT HOLE	STATION	OFFSET	UTILITY	DEPTH
(P26)	18+58.71	30.99	2" GAS	38"
(P27)	19+19.49	31.00	2" GAS	38"
(P30)	19+81.68	15.34	2" GAS	50"
(P31)	19+49.64	30.99	2" GAS	52"
			4" GAS	55"

ALL POT HOLING CONDUCTED ON 3-13-00
ALL STATIONING ALONG TENAYA WAY

NOTE:
DEPTHS ARE APPROXIMATE AND ARE CALCULATED FROM EXISTING GRADE. CONTRACTOR TO VERIFY ELEVATIONS

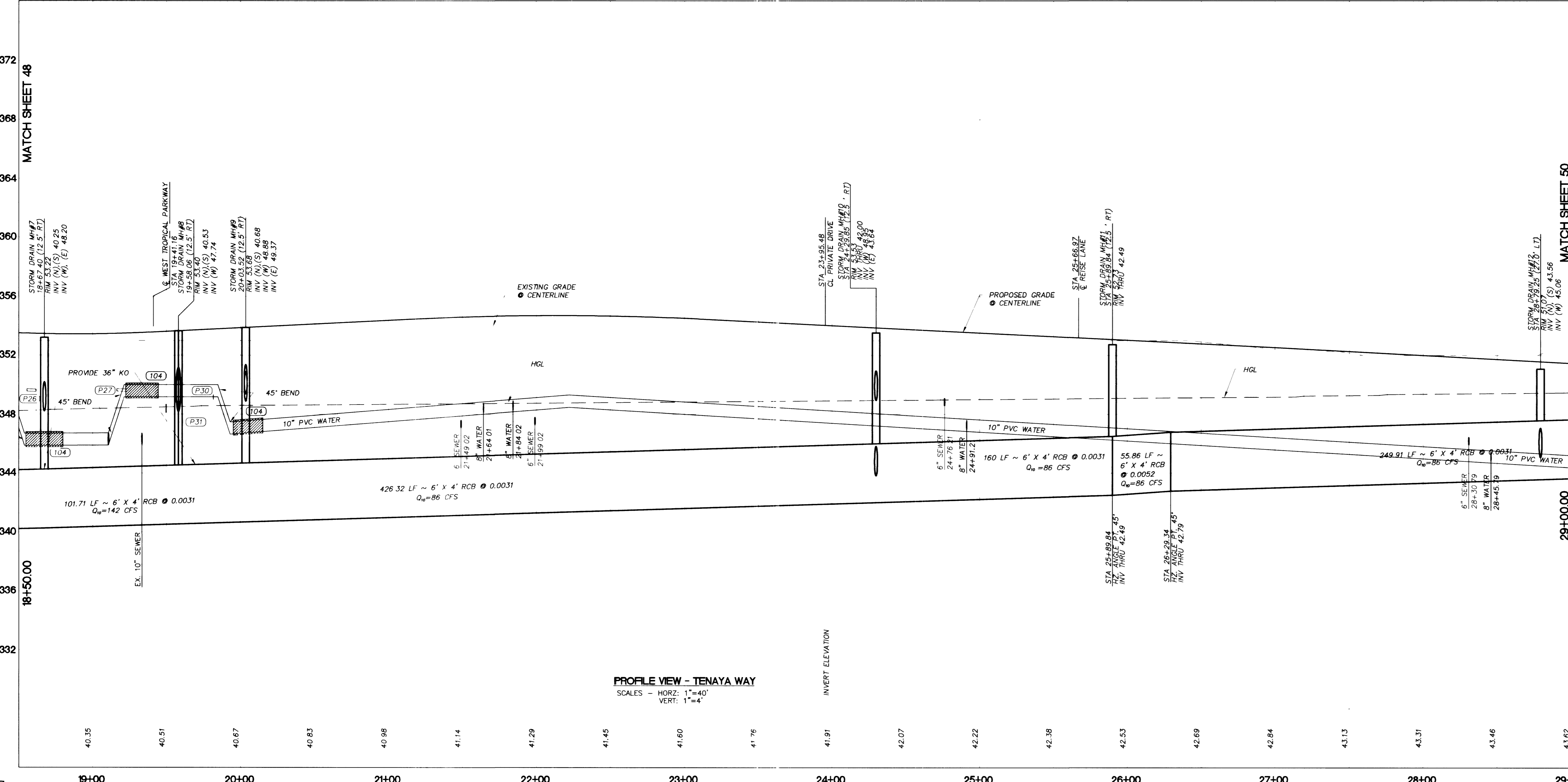


- CONSTRUCTION NOTES**
- RELOCATIONS**
- (24) RELOCATE DRY UTILITY (BY OTHERS)
- STORM DRAIN IMPROVEMENTS**
- (30) CONSTRUCT DROP INLET TYPE 'CM1' (SHEET SDD1)
 - (31) CONSTRUCT DROP INLET TYPE 'PC2' (SHEET SDD2)
 - (31A) CONSTRUCT DROP INLET TYPE 'PC3' (SHEET SDD2)
 - (31B) CONSTRUCT MODIFIED DROP INLET 'PC2' (SHEET SDD2)
 - (32) CONSTRUCT 6'x4' RCB
 - (33) CONSTRUCT 48" SMOOTH LINED HDPE
 - (34) CONSTRUCT 27" SMOOTH LINED HDPE
 - (35) CONSTRUCT 6'x4' 45' BEND (SHEET SDD1)
 - (36) CONSTRUCT 36" SMOOTH LINED HDPE
 - (37) CONSTRUCT 24" SMOOTH LINED HDPE
 - (37A) CONSTRUCT 18" SMOOTH LINED HDPE
 - (38) CONSTRUCT 48" MANHOLE (CCSD STD DWG SD-1)
 - (39) CONSTRUCT 60" MANHOLE (CCSD STD DWG SD-1)
 - (39A) PROVIDE KNOCKOUT PER DETAIL SHEET SDD2
 - (39B) PROVIDE 36" KNOCKOUT PER MH DETAIL (SHEET SDD1)
 - (4) INDICATES STORM DRAIN LATERAL NUMBER
 - SEE SHEET S07 - STORM DRAIN LATERAL PROFILES
- BASIS OF BEARING**
- NORTH AMERICAN DATUM - 1983 (NAD'83), NEVADA COORDINATE SYSTEM - 1983 (NCS'83), EAST ZONE (2701), MODIFIED AS SHOWN BY A MAP ON FILE IN THE OFFICE OF THE COUNTY RECORDER, CLARK COUNTY, NEVADA IN FILE 89 OF RECORDS OR SURVEYS, PAGE 3
- BENCH MARKS**
- #1LV90/27N4, CLV, PLS 2050 AL CAP W/4 SEC.27 ELEV. 2381.17 NAVD 88
 - #1LV90/27N4, CLV, AL CAP, PLS 2984, CENTENNIAL PKWY & TENAYA WAY ELEV. 2356.41 NAVD 88

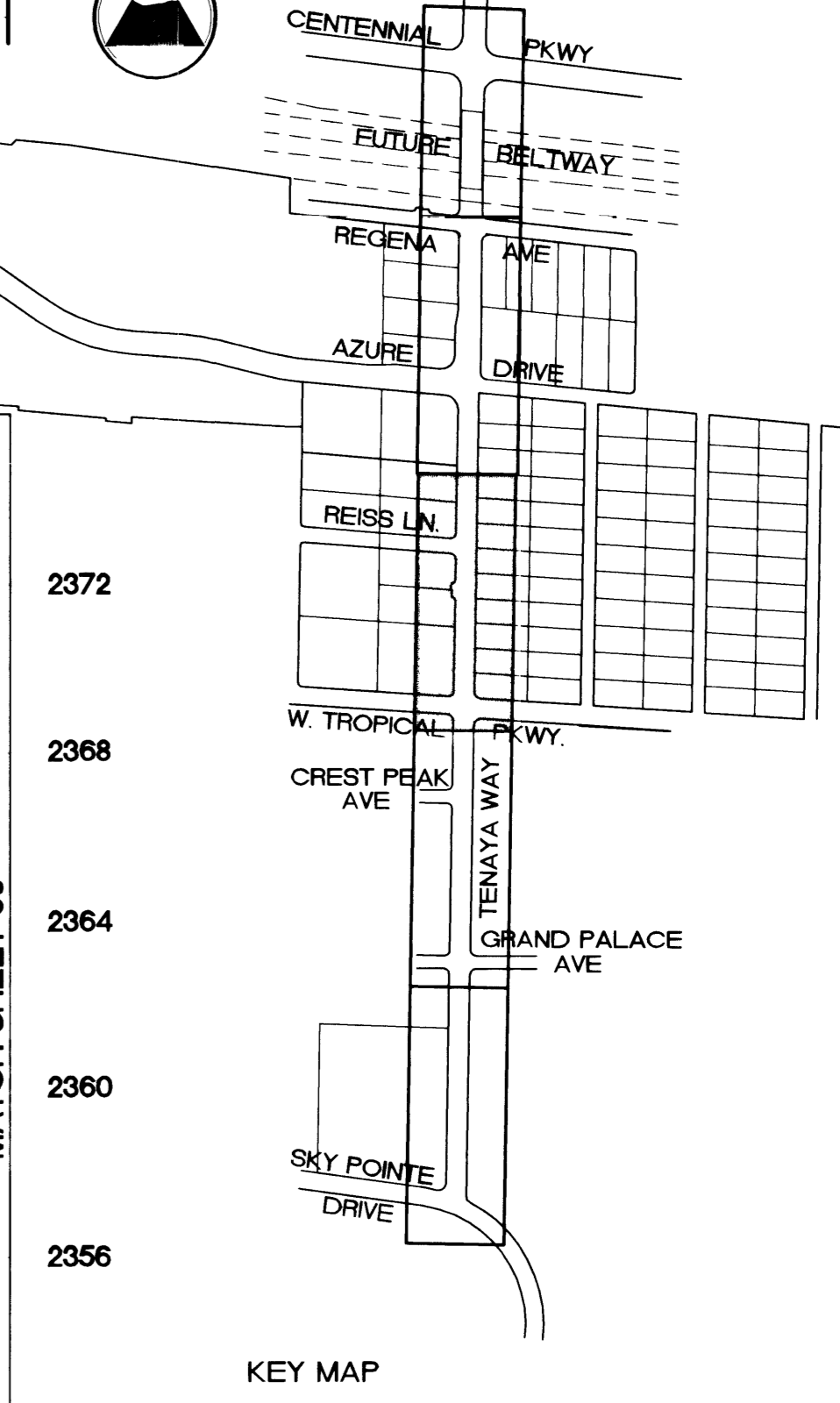


NOTE

KNOCKOUTS SHOWN ON THESE PLANS SHALL BE PROVIDED BY THE MANUFACTURER AT THE TIME OF FABRICATION. THESE KNOCKOUTS SHALL REMAIN INTACT UNTIL FUTURE CONNECTION TO ANH ROAD SYSTEM (BY OTHERS) IS ONLINE. ONCE THE ANH ROAD SYSTEM IS COMPLETED, THE ANH ROAD SYSTEM CONTRACTOR (BY OTHERS) SHALL REMOVE ALL KNOCKOUTS AS INDICATED ON THESE PLANS. CONTRACTOR TO VERIFY LOCATION OF ALL KNOCKOUTS AND INVERTS OF INLETS. ANY DISCREPANCIES WITH THE PLANS SHALL BE IMMEDIATELY REPORTED TO THE ENGINEER.



PROFILE VIEW - TENAYA WAY
SCALE: HORIZ: 1"=40'
VERT: 1"=4'



APPROVED FOR CONSTRUCTION

LAS VEGAS VALLEY WATER DISTRICT DATE

DISCLAIMER NOTE

UTILITY LOCATIONS SHOWN HEREON ARE APPROXIMATE ONLY. IT SHALL BE THE CONTRACTOR'S RESPONSIBILITY TO DETERMINE THE EXACT HORIZONTAL AND VERTICAL LOCATION OF ALL EXISTING UNDERGROUND UTILITIES PRIOR TO COMMENCING CONSTRUCTION. NO REPRESENTATION IS MADE THAT ALL EXISTING UTILITIES ARE SHOWN HEREON. THE ENGINEER ASSUMES NO RESPONSIBILITY FOR UTILITIES NOT SHOWN OR UTILITIES NOT SHOWN IN THEIR PROPER LOCATION.

ENGINEERING DESIGN SECTION

CITY ENGINEER: CHARLES KAJKOWSKI, JR., P.E.
PROJECT MANAGER: THERESA M. HANRAHAN, P.E.

PRIMAS AND ASSOCIATES CONSULTING ENGINEERS

1081 CIMARRON ROAD, SUITE A-3
LAS VEGAS, NV 89146, 508-8183
PHONE (702) 228-8184
FAX (702) 228-8194

DEPARTMENT OF PUBLIC WORKS
400 EAST STEWART
LAS VEGAS, NV 89101
(702) 223-5276

TENAYA WAY STORM DRAIN STATION 18+50 TO 29+00

TENAYA WAY / AZURE DRIVE ROADWAY IMPROVEMENTS

SHEET 49 OF 70 SHEETS

DRAWING NO. 107-V3145

DATE: 11/25/01

SCALE: 1"=40' HORIZ
1"=4' VERT

DESIGNED BY: [Signature]

CHECKED BY: [Signature]

PROJECT NO: 907.01001

SEAL: PROFESSIONAL ENGINEER, CIVIL, No. 6638, CRAIG A. PRIMAS, P.E.