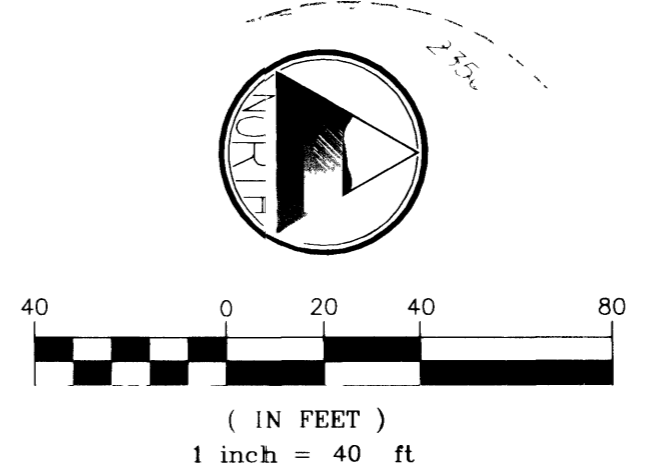
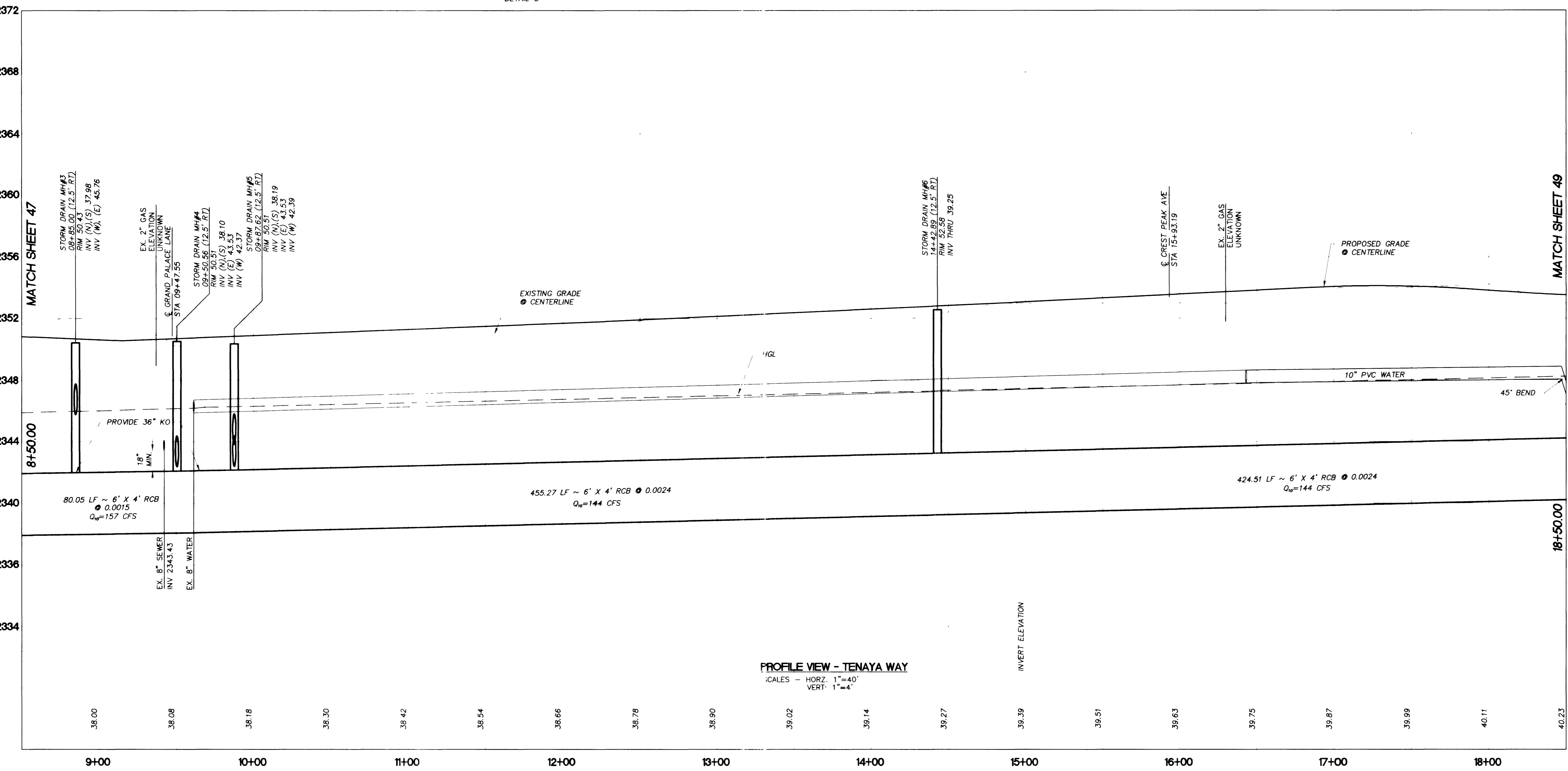


PLAN VIEW - TENAYA WAY
SCALE: 1" = 40'

NOTE:
KNOCKOUTS SHOWN ON THESE PLANS SHALL BE PROVIDED BY THE MANUFACTURER AT THE TIME OF FABRICATION. THESE KNOCKOUTS SHALL REMAIN INTACT UNTIL FUTURE CONNECTION TO ANN ROAD SYSTEM (BY OTHERS) IS ONLINE. ONCE THE ANN ROAD SYSTEM IS COMPLETED, THE ANN ROAD SYSTEM CONTRACTOR (BY OTHERS) SHALL REMOVE ALL KNOCKOUTS AS INDICATED ON THESE PLANS. CONTRACTOR TO VERIFY LOCATION OF ALL KNOCKOUTS AND INVERTS OF INLETS. ANY DISCREPANCIES WITH THE PLANS SHALL BE IMMEDIATELY REPORTED TO THE ENGINEER.



- CONSTRUCTION NOTES**
- RELOCATIONS**
- (24) RELOCATE DRY UTILITIES (BY OTHERS)
 - (26) RELOCATE WATER (PER DETAIL W5)
- STORM DRAIN IMPROVEMENTS**
- (30) CONSTRUCT DROP INLET TYPE 'CM1' (SHEET SDD1)
 - (31) CONSTRUCT DROP INLET TYPE 'PC2' (SHEET SDD2)
 - (31A) CONSTRUCT DROP INLET TYPE 'PC3' (SHEET SDD2)
 - (32) CONSTRUCT 6'x4' RCB
 - (33) CONSTRUCT 48" SMOOTH LINED HDPE
 - (34) CONSTRUCT 27" SMOOTH LINED HDPE
 - (35) CONSTRUCT 6'x4' 45° BEND (SHEET SDD1)
 - (36) CONSTRUCT 36" SMOOTH LINED HDPE
 - (37) CONSTRUCT 24" SMOOTH LINED HDPE
 - (37A) CONSTRUCT 18" SMOOTH LINED HDPE
 - (38) CONSTRUCT 48" MANHOLE (CCSD STD DWG SD-1)
 - (39) CONSTRUCT 60" MANHOLE (CCSD STD DWG SD-1)
 - (39A) PROVIDE KNOCKOUT PER DETAIL SHEET SDD2
 - (39B) PROVIDE 36" KNOCKOUT PER MH DETAIL (SHEET SDD1)
 - (39C) CONCRETE ENCASE STORM DRAIN 10' EACH SIDE OF WATER
- (#) INDICATES STORM DRAIN LATERAL NUMBER SEE SHEET SD7 - STORM DRAIN LATERAL PROFILES
- BASIS OF BEARING:**
- NORTH AMERICAN DATUM - 1983 (NAD'83), NEVADA COORDINATE SYSTEM - 1983 (NCS'83), EAST ZONE (2701), MODIFIED AS SHOWN BY A MAP ON FILE IN THE OFFICE OF THE COUNTY RECORDER, CLARK COUNTY, NEVADA IN FILE 89 OF RECORDS OR SURVEYS, PAGE 3
- BENCHMARKS:**
- #11V90/27W4, CLV, PLS 2050 AL CAP W1/4 SEC.27 ELEV. 2381.17 NAVD 88
- #11V90/27W4, CLV, AL CAP, PLS 2984, CENTENNIAL PKWY & TENAYA WAY ELEV. 2356.41 NAVD 88



CONSTRUCTION NOTES

RELOCATIONS

- (24) RELOCATE DRY UTILITIES (BY OTHERS)
- (26) RELOCATE WATER (PER DETAIL W5)

STORM DRAIN IMPROVEMENTS

- (30) CONSTRUCT DROP INLET TYPE 'CM1' (SHEET SDD1)
- (31) CONSTRUCT DROP INLET TYPE 'PC2' (SHEET SDD2)
- (31A) CONSTRUCT DROP INLET TYPE 'PC3' (SHEET SDD2)
- (32) CONSTRUCT 6'x4' RCB
- (33) CONSTRUCT 48" SMOOTH LINED HDPE
- (34) CONSTRUCT 27" SMOOTH LINED HDPE
- (35) CONSTRUCT 6'x4' 45° BEND (SHEET SDD1)
- (36) CONSTRUCT 36" SMOOTH LINED HDPE
- (37) CONSTRUCT 24" SMOOTH LINED HDPE
- (37A) CONSTRUCT 18" SMOOTH LINED HDPE
- (38) CONSTRUCT 48" MANHOLE (CCSD STD DWG SD-1)
- (39) CONSTRUCT 60" MANHOLE (CCSD STD DWG SD-1)
- (39A) PROVIDE KNOCKOUT PER DETAIL SHEET SDD2
- (39B) PROVIDE 36" KNOCKOUT PER MH DETAIL (SHEET SDD1)
- (39C) CONCRETE ENCASE STORM DRAIN 10' EACH SIDE OF WATER

(#) INDICATES STORM DRAIN LATERAL NUMBER SEE SHEET SD7 - STORM DRAIN LATERAL PROFILES

BASIS OF BEARING:

NORTH AMERICAN DATUM - 1983 (NAD'83), NEVADA COORDINATE SYSTEM - 1983 (NCS'83), EAST ZONE (2701), MODIFIED AS SHOWN BY A MAP ON FILE IN THE OFFICE OF THE COUNTY RECORDER, CLARK COUNTY, NEVADA IN FILE 89 OF RECORDS OR SURVEYS, PAGE 3

BENCHMARKS:

#11V90/27W4, CLV, PLS 2050 AL CAP W1/4 SEC.27 ELEV. 2381.17 NAVD 88

#11V90/27W4, CLV, AL CAP, PLS 2984, CENTENNIAL PKWY & TENAYA WAY ELEV. 2356.41 NAVD 88

KEY MAP

APPROVED FOR CONSTRUCTION

LAS VEGAS VALLEY WATER DISTRICT DATE

DISCLAIMER NOTE

UTILITY LOCATIONS SHOWN HEREON ARE APPROXIMATE ONLY. IT SHALL BE THE CONTRACTOR'S RESPONSIBILITY TO DETERMINE THE EXACT HORIZONTAL AND VERTICAL LOCATION OF ALL EXISTING UNDERGROUND UTILITIES PRIOR TO COMMENCING CONSTRUCTION. NO REPRESENTATION IS MADE THAT ALL EXISTING UTILITIES ARE SHOWN HEREON. THE ENGINEER ASSUMES NO RESPONSIBILITY FOR UTILITIES NOT SHOWN OR UTILITIES NOT SHOWN IN THEIR PROPER LOCATION.

DEPARTMENT OF PUBLIC WORKS ENGINEERING DESIGN SECTION
CITY ENGINEER: CHARLES KAIKOWSKI, JR., P.E.
PROJECT MANAGER: THERESA M. HANRAHAN, P.E.

PRIMAS AND ASSOCIATES CONSULTING ENGINEERS

1081 CIMARRON ROAD, SUITE A-3
LAS VEGAS, NV 89101
PHONE: (702) 228-8183
FAX: (702) 228-8184

SHEET SD2
48 OF 70 SHEETS
DRAWING NO. 107-V3145