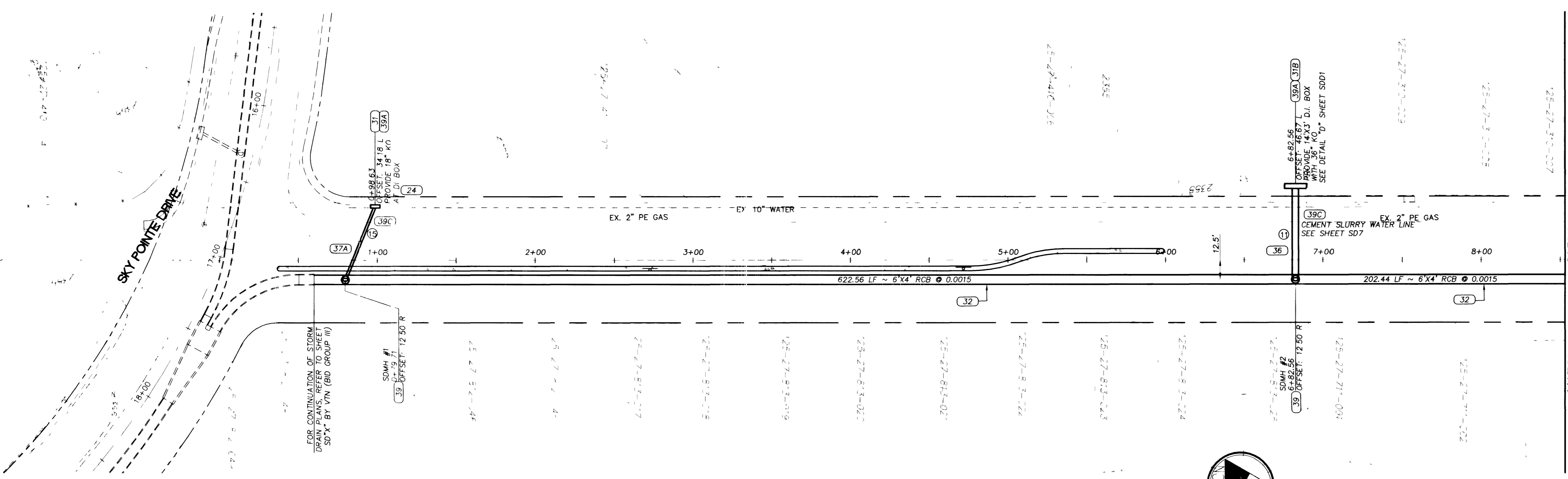


- CONSTRUCTION NOTES**
- RELOCATIONS**
- (24) RELOCATE DRY UTILITY (BY OTHERS)
- STORM DRAIN IMPROVEMENTS**
- (29) CONST. WATERTIGHT PIPE (UDS SEC. 2.19.01 PAR. "D" SUB. "3C")
 - (30) CONSTRUCT DROP INLET TYPE 'CM1' (SHEET SDD1)
 - (31) CONSTRUCT DROP INLET TYPE 'PC2' (SHEET SDD2)
 - (31A) CONSTRUCT DROP INLET TYPE 'PC3' (SHEET SDD2)
 - (31B) CONSTRUCT 14' X3' DROP INLET (SHEET SDD1)
 - (32) CONSTRUCT 6'X4' RCB
 - (33) CONSTRUCT 48" SMOOTH LINED HDPE
 - (34) CONSTRUCT 27" SMOOTH LINED HDPE
 - (35) CONSTRUCT 6'X4' 45' BEND (SHEET SDD1)
 - (36) CONSTRUCT 36" SMOOTH LINED HDPE
 - (37) CONSTRUCT 24" SMOOTH LINED HDPE
 - (37A) CONSTRUCT 18" SMOOTH LINED HDPE
 - (38) CONSTRUCT 48" MANHOLE (CCSD STD DWG SD-1)
 - (39) CONSTRUCT 60" MANHOLE (CCSD STD DWG SD-1)
 - (39A) PROVIDE KNOCKOUT PER DETAIL SHEET SDD2
 - (39B) PROVIDE 36" KNOCKOUT PER MH DETAIL (SHEET SDD1)
 - (39C) CONCRETE ENCASE STORM DRAIN 10' EACH SIDE OF WATER
- INDICATES STORM DRAIN LATERAL NUMBER
SEE SHEET SD7 - STORM DRAIN LATERAL PROFILES

BASIS OF BEARING:

NORTH AMERICAN DATUM - 1983 (NAD'83), NEVADA COORDINATE SYSTEM - 1983 (NCS'83), EAST ZONE (2701), MODIFIED AS SHOWN BY A MAP ON FILE IN THE OFFICE OF THE COUNTY RECORDER, CLARK COUNTY, NEVADA IN FILE 89 OF RECORDS OR SURVEYS, PAGE 3.



POTHOLE	STATION	OFFSET	UTILITY	DEPTH
(P5)	0+44.15	-57.56	2" GAS	44"
(P6)	0+57.25	-29.57	10" WATER	60"
(P7)	6+52.85	-29.26	2" GAS	40"
(P8)	6+52.58	-24.07	10" WATER	50"
(P11)	7+08.85	-28.75	10" WATER	47.5"
(P12)	7+08.93	-23.91	2" GAS	42"

NOTE:

KNOCKOUTS SHOWN ON THESE PLANS SHALL BE PROVIDED BY THE MANUFACTURER AT THE TIME OF FABRICATION. THESE KNOCKOUTS SHALL REMAIN INTACT UNTIL FUTURE CONNECTION TO ANN ROAD SYSTEM (BY OTHERS) IS ONLINE. ONCE THE ANN ROAD SYSTEM IS COMPLETED, THE ANN ROAD SYSTEM CONTRACTOR (BY OTHERS) SHALL REMOVE ALL KNOCKOUTS AS INDICATED ON THESE PLANS. CONTRACTOR TO VERIFY LOCATION OF ALL KNOCKOUTS AND INVERTS OF INLETS. ANY DISCREPANCIES WITH THE PLANS SHALL BE IMMEDIATELY REPORTED TO THE ENGINEER.

BENCHMARKS:

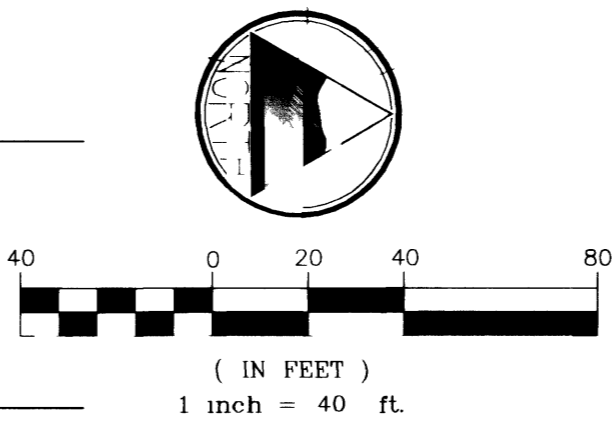
#1LV90/27W4, CLV, PLS 2050 AL CAP W1/4 SEC.27
ELEV. 2381.17 NAVD 88

#1LV90/27N4, CLV, AL CAP, PLS 2984,
CENTENNIAL PKWY & TENAYA WAY
ELEV. 2356.41 NAVD 88

VTN BENCHMARKS:

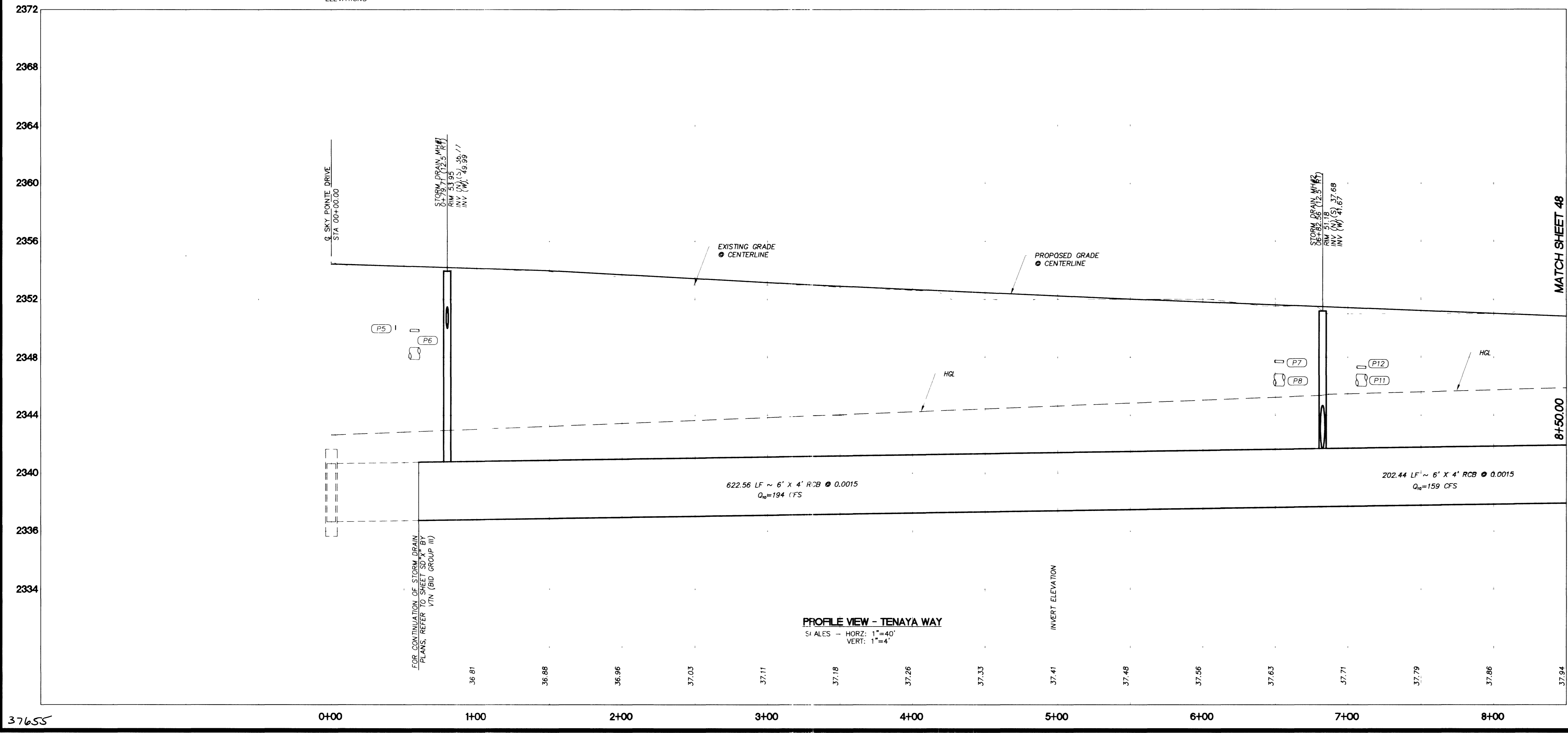
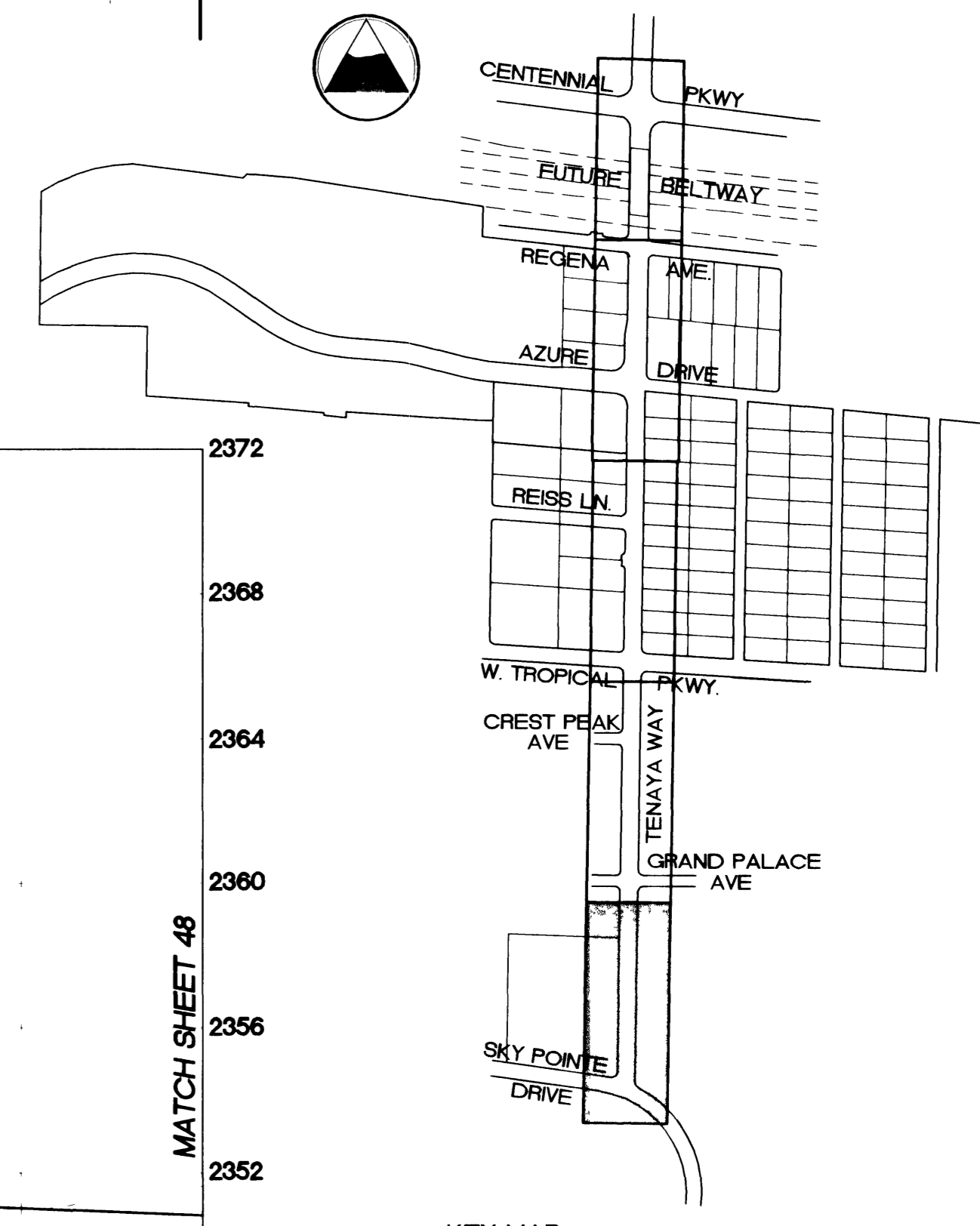
PROJECT DATUM: NAVD88
CITY OF LAS VEGAS BENCHMARK 1LV90-36NES
NAVD88 ELEVATION: 681.303 METERS (2235.24 FEET)

RIVET AND PLATE IN TOP OF CURB, SW CORNER OF ANN ROAD AND DECATUR BLVD.



ALL POTHOLES CONDUCTED ON 3-13-00
ALL STATIONING ALONG TENAYA WAY

NOTE:
DEPTHS ARE APPROXIMATE AND ARE CALCULATED FROM EXISTING GRADE. CONTRACTOR TO VERIFY ELEVATIONS.



PROFILE VIEW - TENAYA WAY
SCALES - HORZ: 1"=40'
VERT: 1"=4'

DISCLAIMER NOTE

UTILITY LOCATIONS SHOWN HEREON ARE APPROXIMATE ONLY. IT SHALL BE THE CONTRACTOR'S RESPONSIBILITY TO DETERMINE THE EXACT HORIZONTAL AND VERTICAL LOCATION OF ALL EXISTING UNDERGROUND UTILITIES PRIOR TO COMMENCING CONSTRUCTION. NO REPRESENTATION IS MADE THAT ALL EXISTING UTILITIES ARE SHOWN HEREON. THE ENGINEER ASSUMES NO RESPONSIBILITY FOR UTILITIES NOT SHOWN OR UTILITIES NOT SHOWN IN THEIR PROPER LOCATION.

ENGINEERING DESIGN SECTION

CITY ENGINEER: CHARLES KAIKOWSKI, JR., P.E.
PROJECT MANAGER: THERESA M. HANRAHAN, P.E.

1081 GIMARRON ROAD, SUITE A-3
LAS VEGAS, NV 89101
PHONE: (702) 228-8183
FAX: (702) 228-8194

PRIMAS AND ASSOCIATES
CONSULTING ENGINEERS

DEPARTMENT OF PUBLIC WORKS
400 EAST STEWART
LAS VEGAS, NV 89101
(702) 229-5276

TENAYA WAY
STORM DRAIN
STATION 0+00 TO 8+50

TENAYA WAY / AZURE DRIVE
ROADWAY IMPROVEMENTS

SHEET
SD1
47 OF 70 SHEETS

DRAWN BY: _____
DESIGNED BY: _____
CHECKED BY: _____
PROJECT NO.: 907.01001

SCALE: 1"=40' HORZ
1"=4' VERT

LAS VEGAS VALLEY WATER DISTRICT DATE _____

F:\PROJECTS\9807_01\9807-ctoc.dwg 10/01/2001 07:12:34 AM PPT