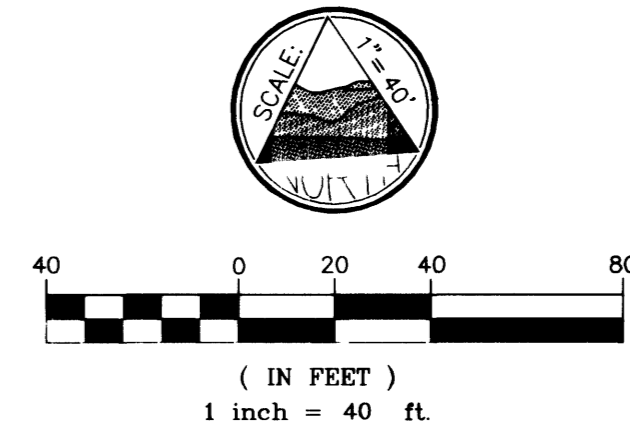
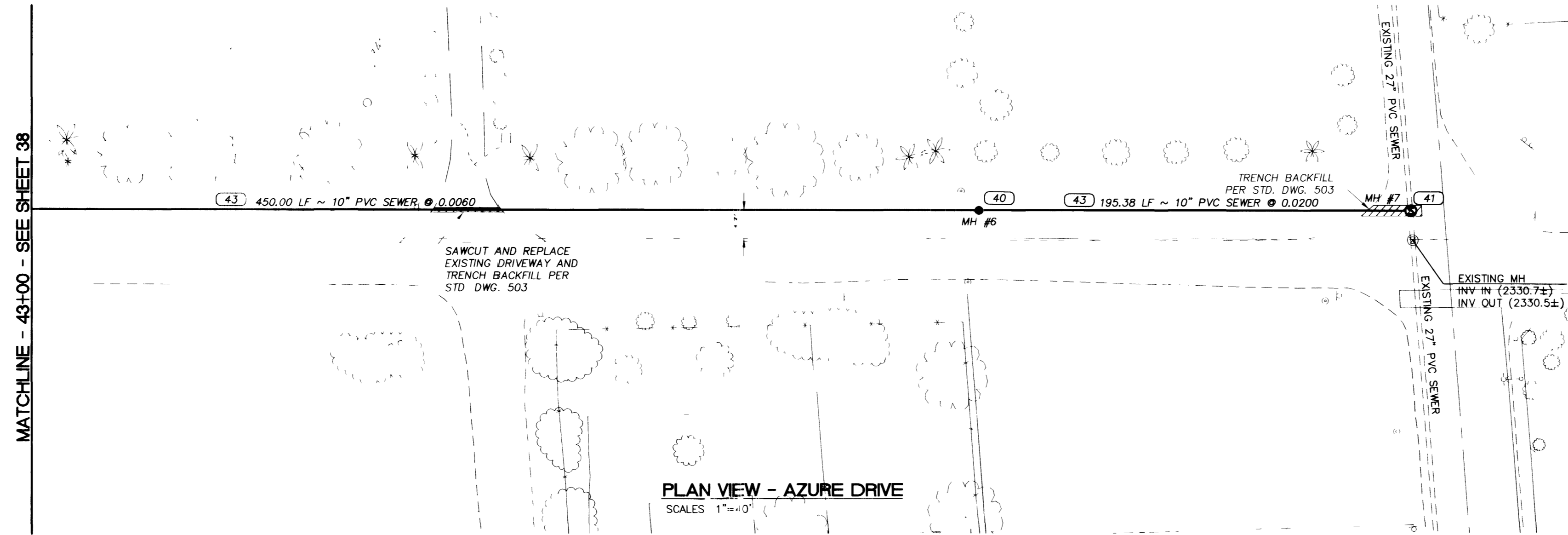


F:\PROJECTS\907\_01\azure-sewer.dwg 09/13/2001 04:08:56 PM PDT

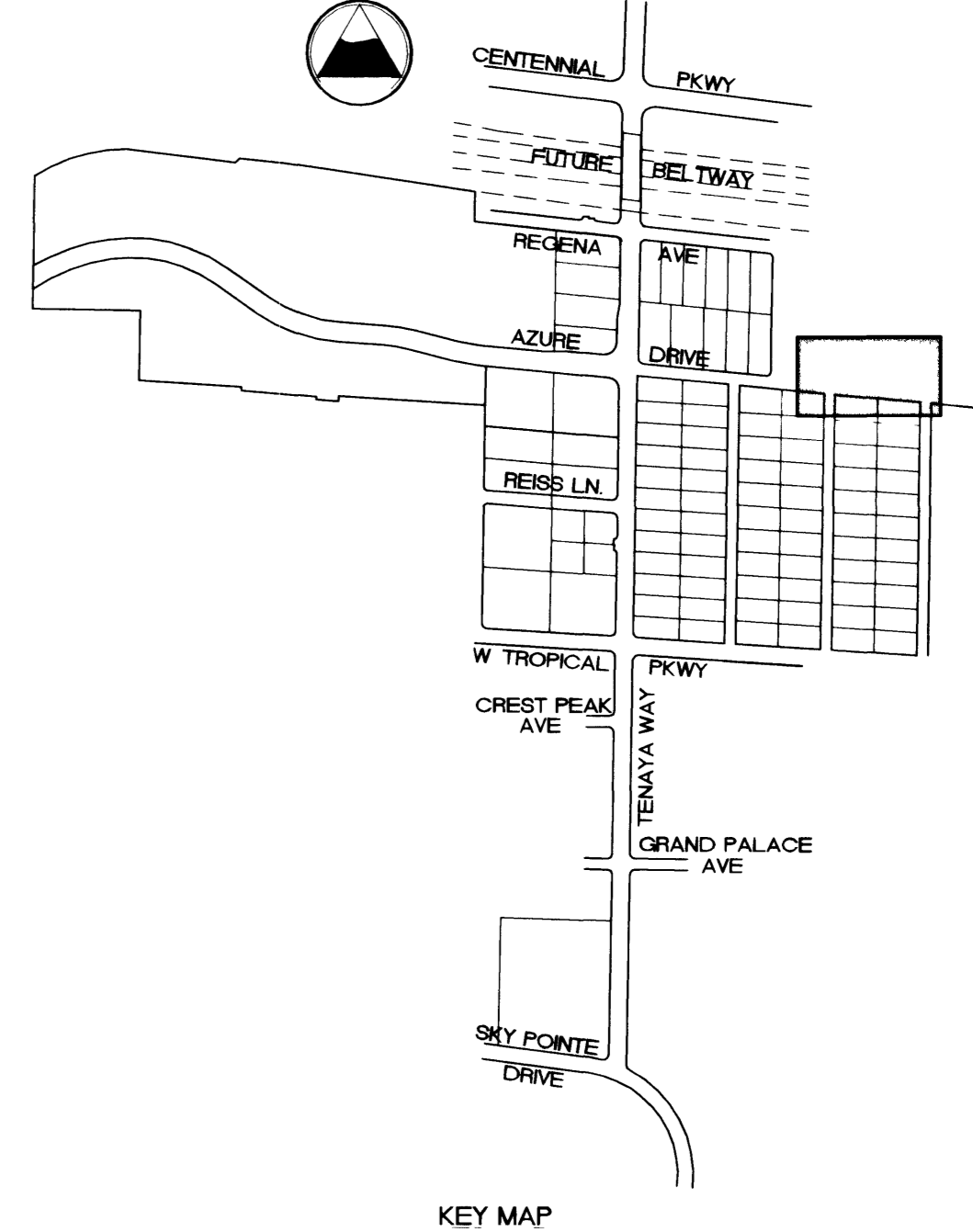
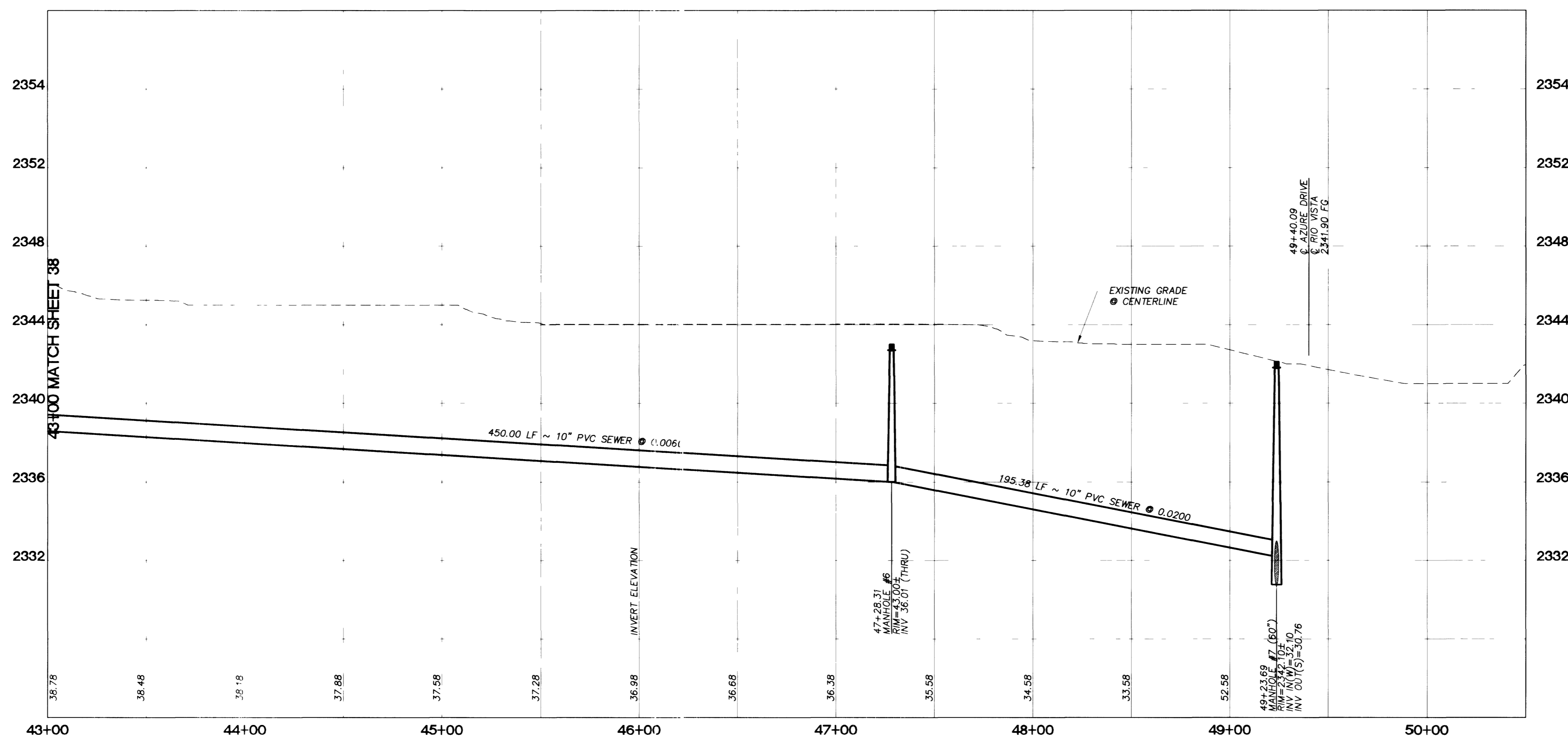
37647



- CONSTRUCTION NOTES**  
**SANITARY SEWER IMPROVEMENTS**
- (40) CONSTRUCT STANDARD ECCENTRIC 48" MANHOLE (DCSWCS SD-1)
  - (41) CONSTRUCT STANDARD ECCENTRIC 60" MANHOLE (DCSWCS SD-1)
  - (42) CONSTRUCT 8" PVC SEWER (DCSWCS SD-11)
  - (43) CONSTRUCT 10" PVC SEWER (DCSWCS SD-11)
  - (44) CONSTRUCT 4" PVC SERVICE LATERAL (DCSWCS SG-17)
  - (45) CONSTRUCT 6" PVC SERVICE LATERAL (DCSWCS SD-17)
  - (46) CONSTRUCT SPECIAL 48" MANHOLE (DCSWCS SD-10)
  - (47) CONSTRUCT CONCRETE ENCASUREMENT (DCSWCS SD-11)

**BASIS OF BEARING**  
 NORTH AMERICAN DATUM - 1983 (NAD'83), NEVADA COORDINATE SYSTEM - 1983 (NCS'83), EAST ZONE (2701), MODIFIED AS SHOWN BY A MAP ON FILE IN THE OFFICE OF THE COUNTY RECORDER, CLARK COUNTY, NEVADA IN FILE 89 OF RECORDS OR SURVEYS, PAGE 3

**BENCHMARKS**  
 #1LV90/27W4, CLV, PLS 2050 AL CAP W1/4 SEC.27  
 ELEV. 2381.17 NAVD 88  
 #1LV90/27N4, CLV, AL CAP, PLS 2984,  
 CENTENNIAL PKWY & TENAYA WAY  
 ELEV. 2356.41 NAVD 88



**DISCLAIMER NOTE**

Utility Locations Shown Hereon are Approximate Only. It shall be the Contractor's Responsibility to Determine the Exact Horizontal and Vertical Location of All Existing Underground Utilities Prior to Commencing Construction. No Representation is Made that All Existing Utilities are Shown Hereon. The Engineer Assumes No Responsibility for Utilities Not Shown or Utilities Not Shown in Their Proper Location.

DEPARTMENT OF PUBLIC WORKS	ENGINEERING DESIGN SECTION
400 EAST STEWART LAS VEGAS NV, 89101 (702) 229-5276	CITY ENGINEER: CHARLES KAJKOWSKI, JR., P.E. PROJECT MANAGER: THERESA M. HANRAHAN, P.E.
PRIMAS AND ASSOCIATES CONSULTING ENGINEERS 1081 SHARON ROAD, SUITE A-3 LAS VEGAS, NV 89146 PHONE (702) 228-8183 FAX (702) 228-0194	BY: _____ REV. DATE: _____
SHEET: _____	
TITLE: AZURE DRIVE SANITARY SEWER STA. 43+00 TO 50+00	
DRAWN BY: _____	
DESIGNED BY: _____	
CHECKED BY: <i>slb</i>	
PROJECT NO: 907.01001	
SCALE: 1"=40' HORZ 1"=4' VERT	
SEAL	
SHEET 57 OF 70 SHEETS	
DRAWING NO. 107-V3145	

BID NO. 02-1750-04 DWG NO. 107-V3145