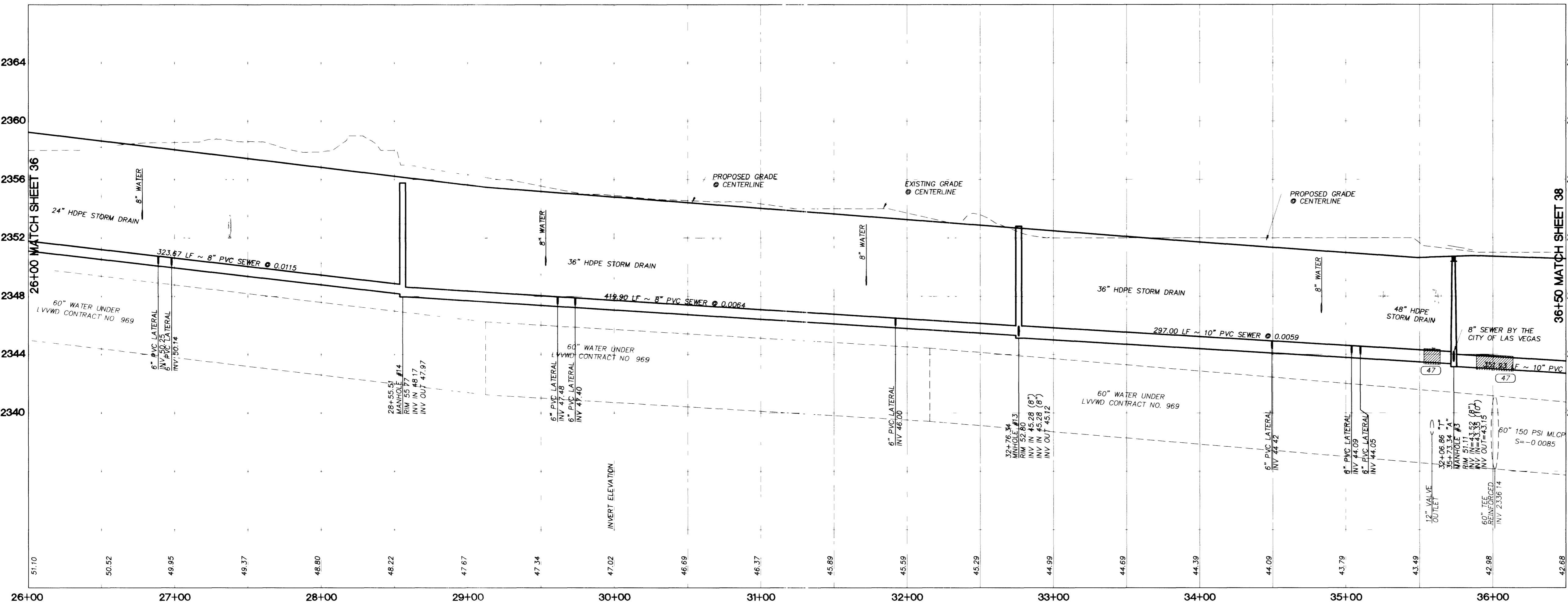
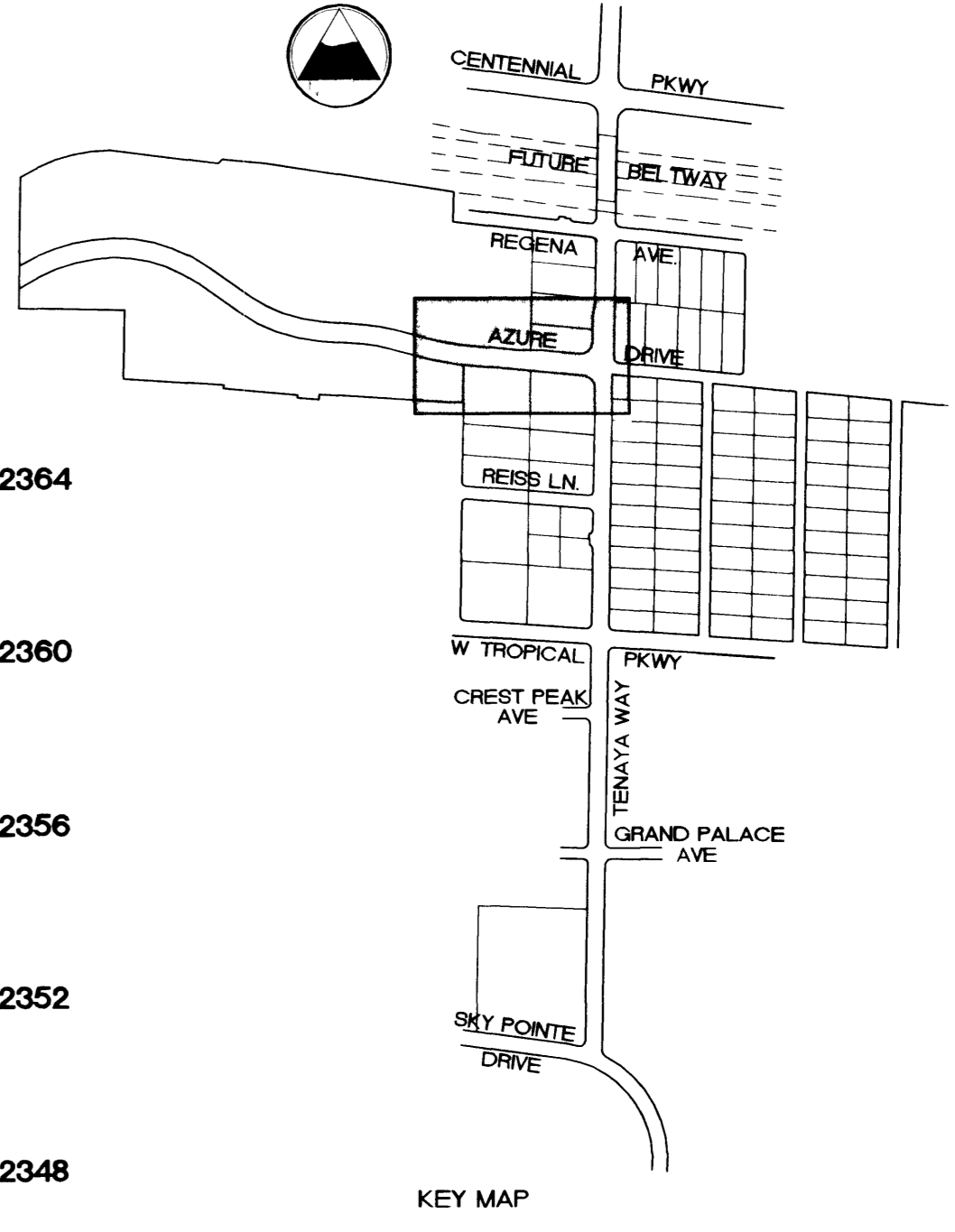
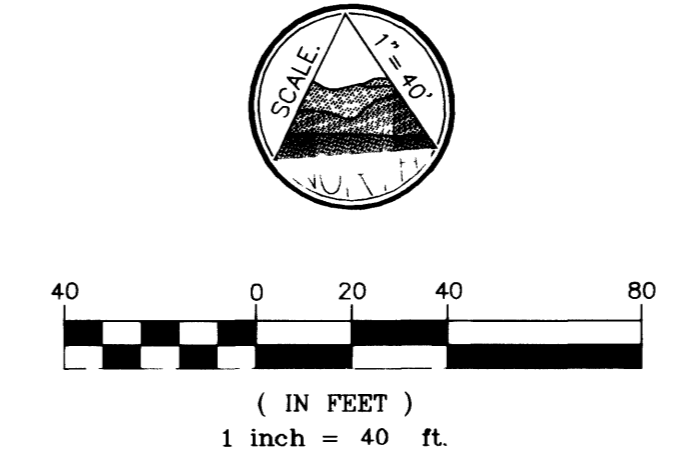
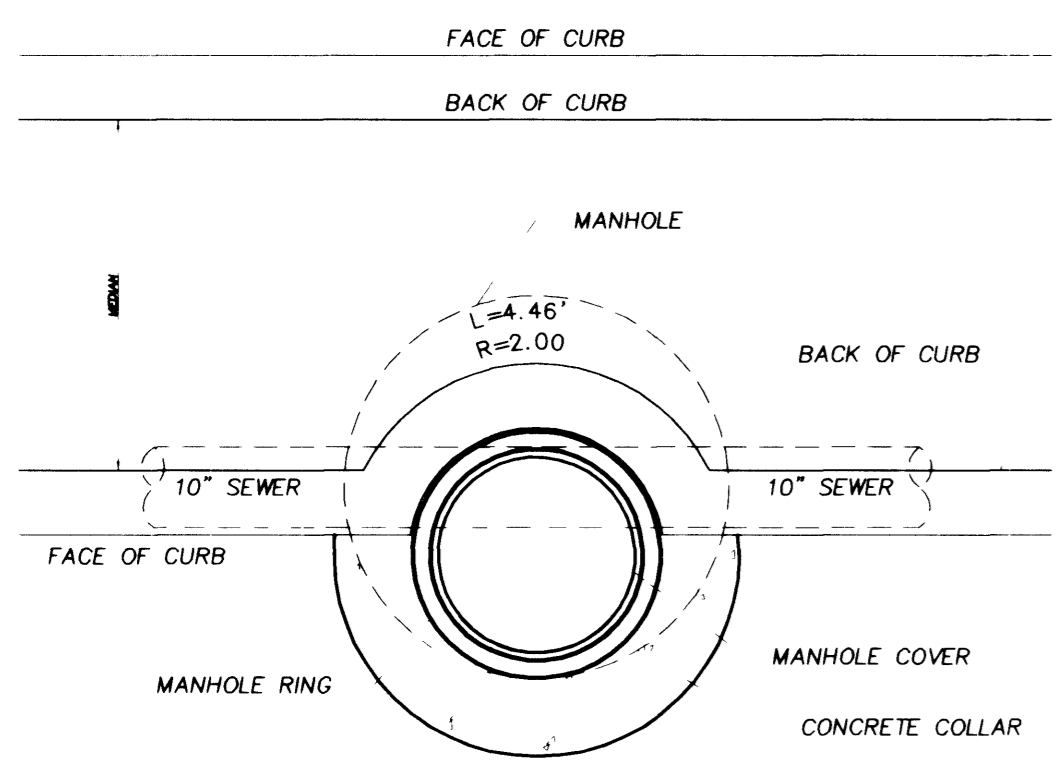


- CONSTRUCTION NOTES**
 SANITARY SEWER IMPROVEMENTS
- (40) CONSTRUCT STANDARD ECCENTRIC 48" MANHOLE (DCSWCS SD-1)
 - (41) CONSTRUCT STANDARD ECCENTRIC 60" MANHOLE (DCSWCS SD-1)
 - (42) CONSTRUCT 8" PVC SEWER (DCSWCS SD-11)
 - (43) CONSTRUCT 10" PVC SEWER (DCSWCS SD-11)
 - (44) CONSTRUCT 4" PVC SERVICE LATERAL (DCSWCS SD-17)
 - (45) CONSTRUCT 6" PVC SERVICE LATERAL (DCSWCS SD-17)
 - (46) CONSTRUCT SPECIAL 48" MANHOLE (DCSWCS SD-10)
 - (47) CONSTRUCT CONCRETE ENCASEMENT (DCSWCS SD-11)
 - (48) USE C900 PVC

BASIS OF BEARING:
 NORTH AMERICAN DATUM - 1983 (NAD'83), NEVADA COORDINATE SYSTEM - 1983 (NCS'83), EAST ZONE (2701), MODIFIED AS SHOWN BY A MAP ON FILE IN THE OFFICE OF THE COUNTY RECORDER, CLARK COUNTY, NEVADA IN FILE 89 OF RECORDS OR SURVEYS, PAGE 3

BENCHMARKS:
 #1190/2774, CLV, PLS 2050 AL CAP W/1/4 SEC.27
 ELEV. 2381.17 NAVD 88
 #1190/2774, CLV, AL CAP, PLS 2984,
 CENTENNIAL PKWY & TENAYA WAY
 ELEV. 2356.41 NAVD 88



APPROVED FOR CONSTRUCTION
 LAS VEGAS VALLEY WATER DISTRICT DATE

DISCLAIMER NOTE
 UTILITY LOCATIONS SHOWN HEREON ARE APPROXIMATE ONLY. IT SHALL BE THE CONTRACTOR'S RESPONSIBILITY TO DETERMINE THE EXACT HORIZONTAL AND VERTICAL LOCATION OF ALL EXISTING UNDERGROUND UTILITIES PRIOR TO COMMENCING CONSTRUCTION. NO REPRESENTATION IS MADE THAT ALL EXISTING UTILITIES ARE SHOWN HEREON. THE ENGINEER ASSUMES NO RESPONSIBILITY FOR UTILITIES NOT SHOWN OR UTILITIES NOT SHOWN IN THEIR PROPER LOCATION.

DEPARTMENT OF PUBLIC WORKS ENGINEERING DESIGN SECTION
 CITY ENGINEER: CHARLES KAJKOWSKI, JR., P.E.
 PROJECT MANAGER: THERESA M. HANRAHAN, P.E.
 1001 SHARSHON ROAD, SUITE A-3
 LAS VEGAS, NV 89145
 PHONE (702) 228-8183
 FAX (702) 228-8194

PRIMAS AND ASSOCIATES
 ENGINEERS

SHEET
AZURE DRIVE
SANITARY SEWER
STA. 26+00 TO 36+50
 TITLE
TENAYA WAY / AZURE DRIVE
ROADWAY IMPROVEMENTS
 DRAWN BY: [Signature]
 DESIGNED BY: [Signature]
 CHECKED BY: [Signature]
 PROJECT NO.: 907.01001
 SCALE: 1"=40' HORIZ
 1"=4' VERT
 DWG NO. 107-V3145
 SEAL
 REGISTERED PROFESSIONAL ENGINEER STATE OF NEVADA
 No. 6638
 SHEET
SS5
 37 OF 70 SHEETS
 DRAWING NO.
107-V3145

F:\PROJECTS\9907_01\azure-sewer.dwg 09/28/2001 04:07:53 PM PDT

37645