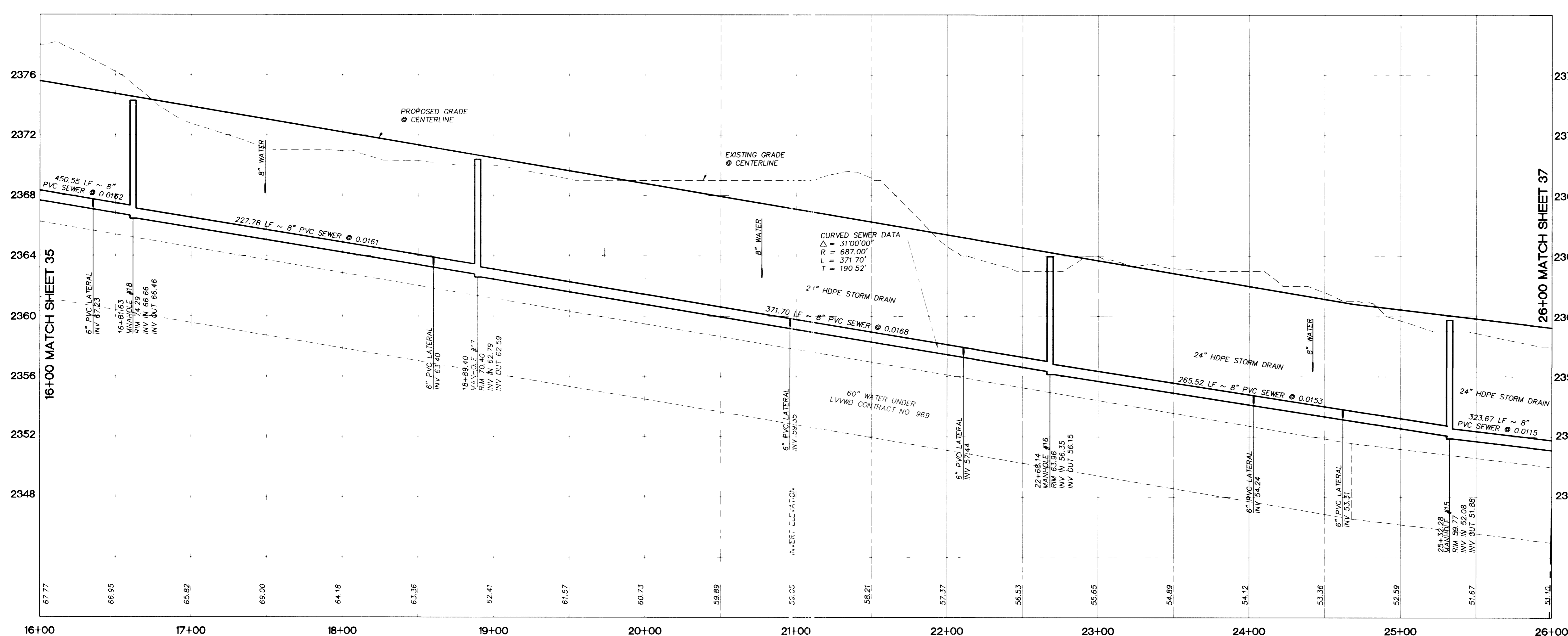
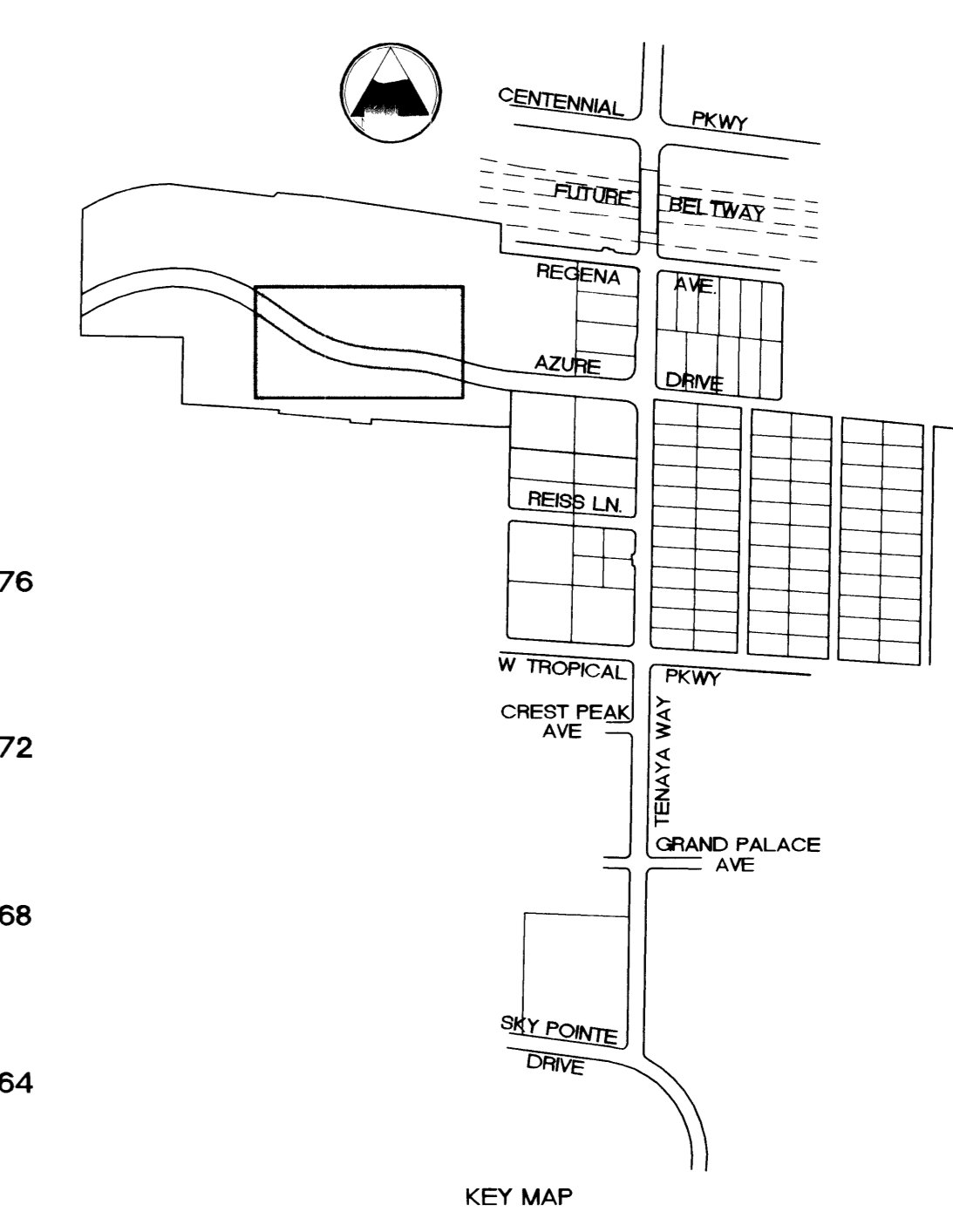


- CONSTRUCTION NOTES**
SANITARY SEWER IMPROVEMENTS
- (40) CONSTRUCT STANDARD ECCENTRIC 48" MANHOLE (DCSWCS SD-1)
 - (41) CONSTRUCT STANDARD ECCENTRIC 60" MANHOLE (DCSWCS SD-1)
 - (42) CONSTRUCT 8" PVC SEWER (DCSWCS SD-11)
 - (43) CONSTRUCT 10" PVC SEWER (DCSWCS SD-11)
 - (44) CONSTRUCT 4" PVC SERVICE LATERAL (DCSWCS SD-17)
 - (45) CONSTRUCT 6" PVC SERVICE LATERAL (DCSWCS SD-17)
 - (46) CONSTRUCT SPECIAL 48" MANHOLE (DCSWCS SD-10)
 - (47) CONSTRUCT CONCRETE ENCASUREMENT (DCSWCS SD-11)
 - (48) USE C900 PVC

BASIS OF BEARING:
 NORTH AMERICAN DATUM - 1983 (NAD83), NEVADA COORDINATE SYSTEM - 1983 (NCS83), EAST ZONE (2701), MODIFIED AS SHOWN BY A MAP ON FILE IN THE OFFICE OF THE COUNTY RECORDER, CLARK COUNTY, NEVADA IN FILE 89 OF RECORDS OR SURVEYS, PAGE 3

BENCHMARKS:
 #1LV90/27W4, CLV, PLS 2050 AL CAP W1/4 SEC.27
 ELEV. 2381.17 NAVD 88
 #1LV90/27N4, CLV, AL CAP, PLS 2984,
 CENTENNIAL PKWY & TENAYA WAY
 ELEV. 2356.41 NAVD 88



APPROVED FOR CONSTRUCTION

LAS VEGAS VALLEY WATER DISTRICT DATE

DISCLAIMER NOTE

UTILITY LOCATIONS SHOWN HEREON ARE APPROXIMATE ONLY. IT SHALL BE THE CONTRACTOR'S RESPONSIBILITY TO DETERMINE THE EXACT HORIZONTAL AND VERTICAL LOCATION OF ALL EXISTING UNDERGROUND UTILITIES PRIOR TO COMMENCING CONSTRUCTION. NO REPRESENTATION IS MADE THAT ALL EXISTING UTILITIES ARE SHOWN HEREON. THE ENGINEER ASSUMES NO RESPONSIBILITY FOR UTILITIES NOT SHOWN OR UTILITIES NOT SHOWN IN THEIR PROPER LOCATION.

DEPARTMENT OF PUBLIC WORKS ENGINEERING DESIGN SECTION
 400 EAST STEWART
 LAS VEGAS NV, 89101
 (702) 229-5276

CITY ENGINEER: CHARLES KAIKOWSKI, JR., P.E.
 PROJECT MANAGER: THERESA M. HANRAHAN, P.E.

PRIMAS AND ASSOCIATES CONSULTING ENGINEERS
 1081 GARDNER ROAD, SUITE A-3
 LAS VEGAS, NV 89135
 PHONE: (702) 228-8183
 FAX: (702) 228-8194

AZURE DRIVE SANITARY SEWER STATION 16+00 TO 26+00

TENAYA WAY / AZURE DRIVE ROADWAY IMPROVEMENTS

SHEET 36 OF 70 SHEETS
 DRAWING NO. 107-V3145