

- CONSTRUCTION NOTES**
SANITARY SEWER IMPROVEMENTS
- 40 CONSTRUCT STANDARD ECCENTRIC 48" MANHOLE (DCSWCS SD-1)
 - 41 CONSTRUCT STANDARD ECCENTRIC 60" MANHOLE (DCSWCS SD-1)
 - 42 CONSTRUCT 8" PVC SEWER (DCSWCS SD-11)
 - 43 CONSTRUCT 10" PVC SEWER (DCSWCS SD-11)
 - 44 CONSTRUCT 4" PVC SERVICE LATERAL (DCSWCS SD-17)
 - 45 CONSTRUCT 6" PVC SERVICE LATERAL (DCSWCS SD-17)
 - 46 CONSTRUCT SPECIAL 48" MANHOLE (DCSWCS SD-10)
 - 47 CONSTRUCT CONCRETE ENCASEMENT (DCSWCS SD-11)
 - 48 USE C900 PVC

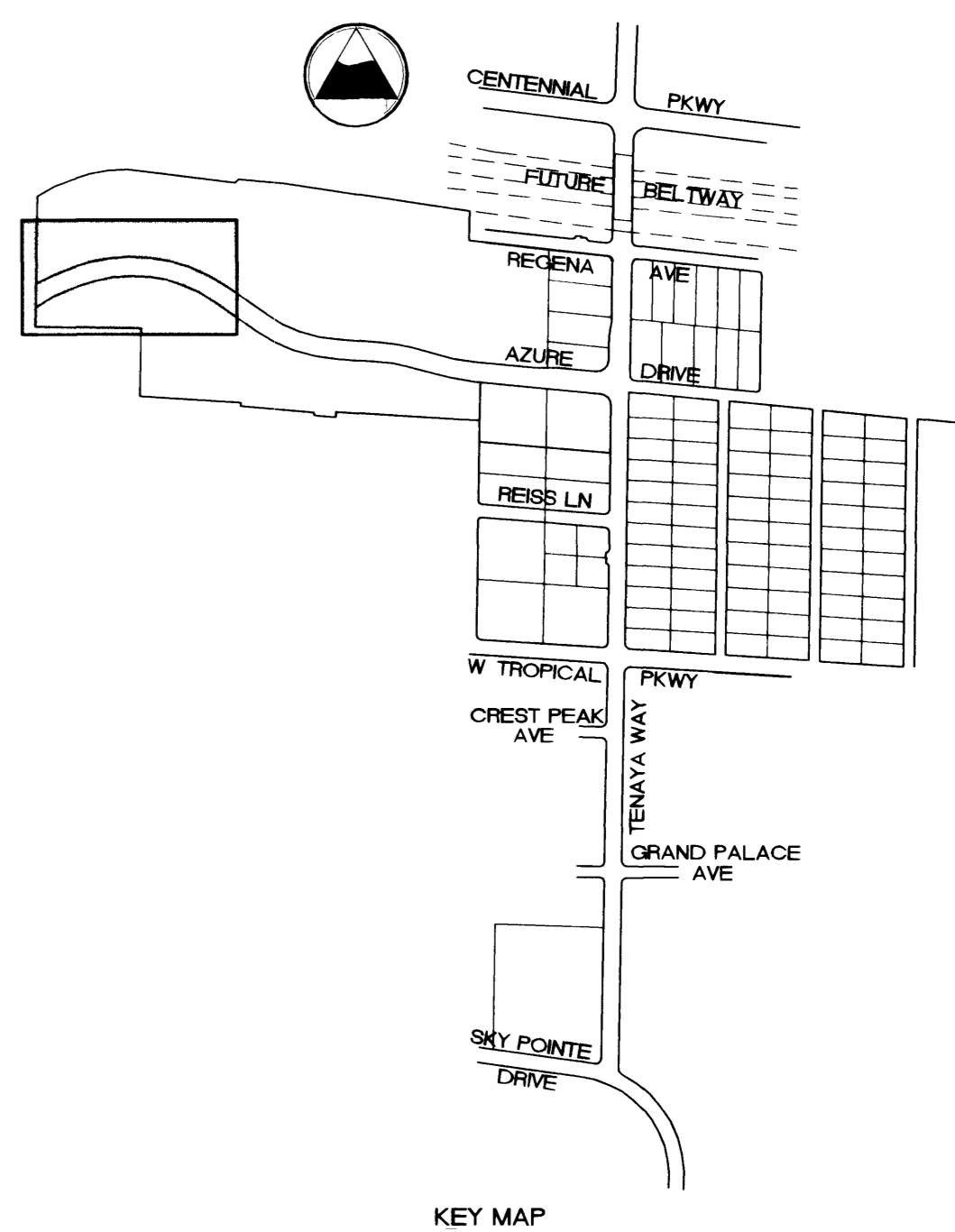
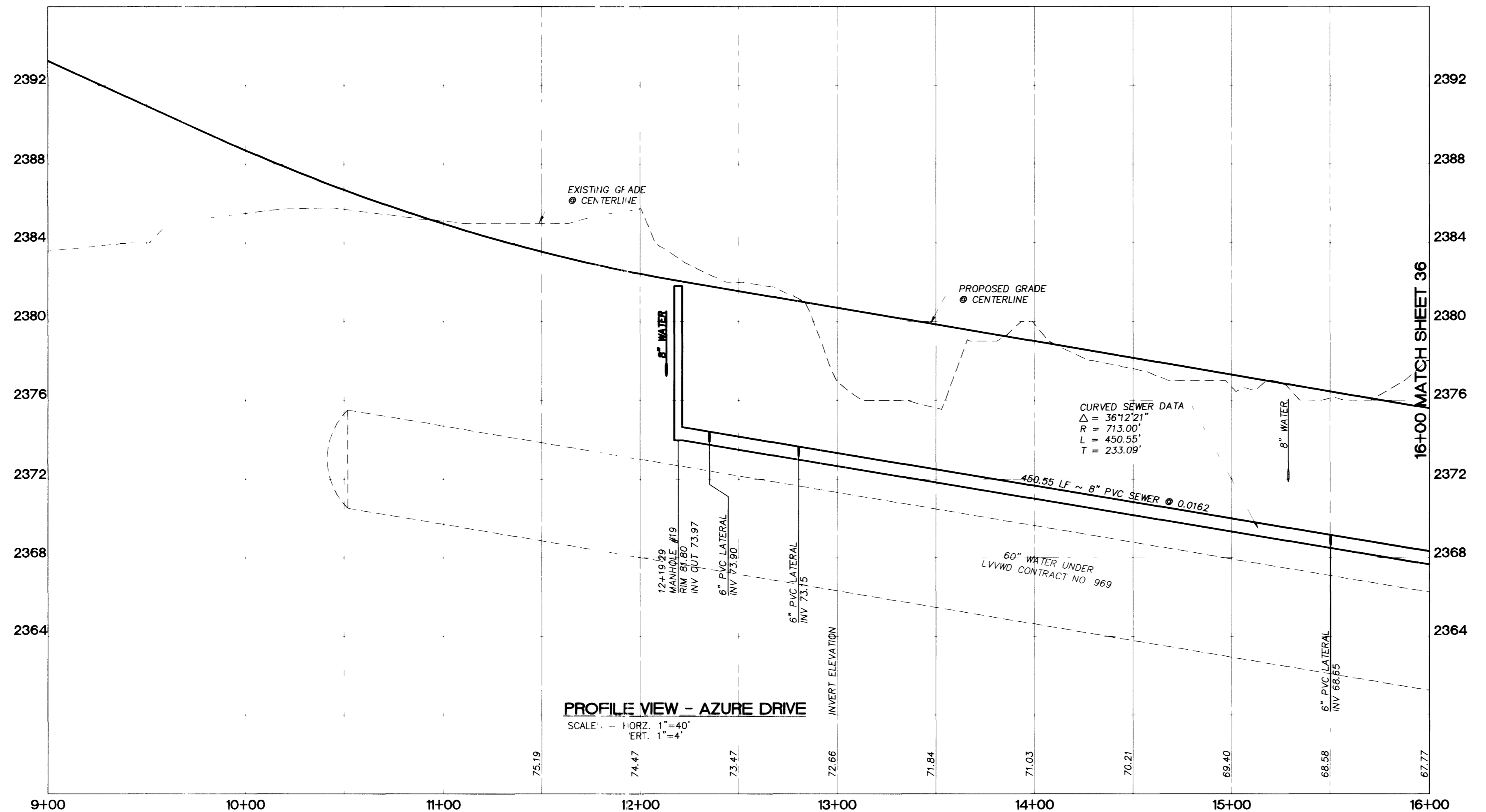
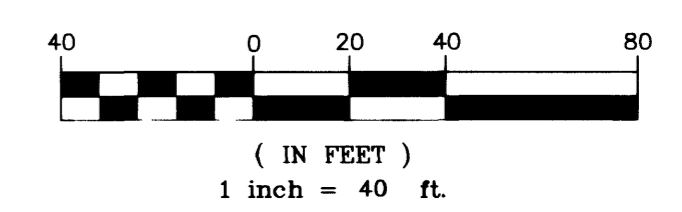
BASIS OF BEARING

NORTH AMERICAN DATUM - 1983 (NAD'83), NEVADA COORDINATE SYSTEM - 1983 (NCS'83), EAST ZONE (2701), MODIFIED AS SHOWN BY A MAP ON FILE IN THE OFFICE OF THE COUNTY RECORDER, CLARK COUNTY, NEVADA IN FILE 89 OF RECORDS OR SURVEYS, PAGE 3.

BENCHMARKS

#1LV90/27W4, CLV, PLS 2050 AL CAP W1/4 SEC.27
ELEV. 2381.17 NAVD 88

#1LV90/27N4, CLV, AL CAP, PLS 2984,
CENTENNIAL PKWY & TENAYA WAY
ELEV. 2356.41 NAVD 88



APPROVED FOR CONSTRUCTION

LAS VEGAS VALLEY WATER DISTRICT DATE

DISCLAIMER NOTE



UTILITY LOCATIONS SHOWN HEREON ARE APPROXIMATE ONLY. IT SHALL BE THE CONTRACTOR'S RESPONSIBILITY TO DETERMINE THE EXACT HORIZONTAL AND VERTICAL LOCATION OF ALL EXISTING UNDERGROUND UTILITIES PRIOR TO COMMENCING CONSTRUCTION. NO REPRESENTATION IS MADE THAT ALL EXISTING UTILITIES ARE SHOWN HEREON. THE ENGINEER ASSUMES NO RESPONSIBILITY FOR UTILITIES NOT SHOWN OR UTILITIES NOT SHOWN IN THEIR PROPER LOCATION.

DEPARTMENT OF PUBLIC WORKS	ENGINEERING DESIGN SECTION	CITY ENGINEER: CHARLES KAJKOWSKI, JR., P.E.	PROJECT MANAGER: THERESA M. HARRAHAN, P.E.
400 EAST STEWART LAS VEGAS NV 89101 (702) 229-5276	PRIMAS AND ASSOCIATES CONSULTING ENGINEERS	1091 CIMARRON ROAD, SUITE A-3 LAS VEGAS, NV 89145 TEL: (702) 228-8183 FAX: (702) 228-8194	REVISION
SHEET AZURE DRIVE SANITARY SEWER STA. 10+00 TO 16+00		TITLE TENAYA WAY / AZURE DRIVE ROADWAY IMPROVEMENTS	
DRAWN BY:		DESIGNED BY:	
CHECKED BY:		PROJECT NO.: 907.01001	
SCALE: 1" = 40' HORIZ 1" = 4' VERT		SEAL	
SHEET 553 OF 70 SHEETS		DRAWING NO. 107-V3145	