

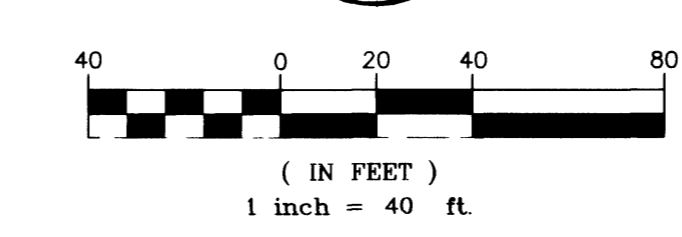
- CONSTRUCTION NOTES**
SANITARY SEWER IMPROVEMENTS
- (40) CONSTRUCT STANDARD ECCENTRIC 48" MANHOLE (DCSWCS SD-1)
 - (41) CONSTRUCT STANDARD ECCENTRIC 60" MANHOLE (DCSWCS SD-1)
 - (42) CONSTRUCT 8" PVC SEWER (DCSWCS SD-11)
 - (43) CONSTRUCT 10" PVC SEWER (DCSWCS SD-11)
 - (44) CONSTRUCT 4" PVC SERVICE LATERAL (DCSWCS SD-17)
 - (45) CONSTRUCT 6" PVC SERVICE LATERAL (DCSWCS SD-17)
 - (46) CONSTRUCT SPECIAL 48" MANHOLE (DCSWCS SD-10)
 - (47) CONSTRUCT CONCRETE ENCASMENT (DCSWCS SD-11)
 - (48) C900 PVC - 10 FEET EACH SIDE AT WATER CROSSING

BASIS OF BEARING:
 NORTH AMERICAN DATUM - 1983 (NAD'83), NEVADA COORDINATE SYSTEM - 1983 (NCS'83), EAST ZONE (2701), MODIFIED AS SHOWN BY A MAP ON FILE IN THE OFFICE OF THE COUNTY RECORDER, CLARK COUNTY, NEVADA IN FILE 89 OF RECORDS OR SURVEYS, PAGE 3

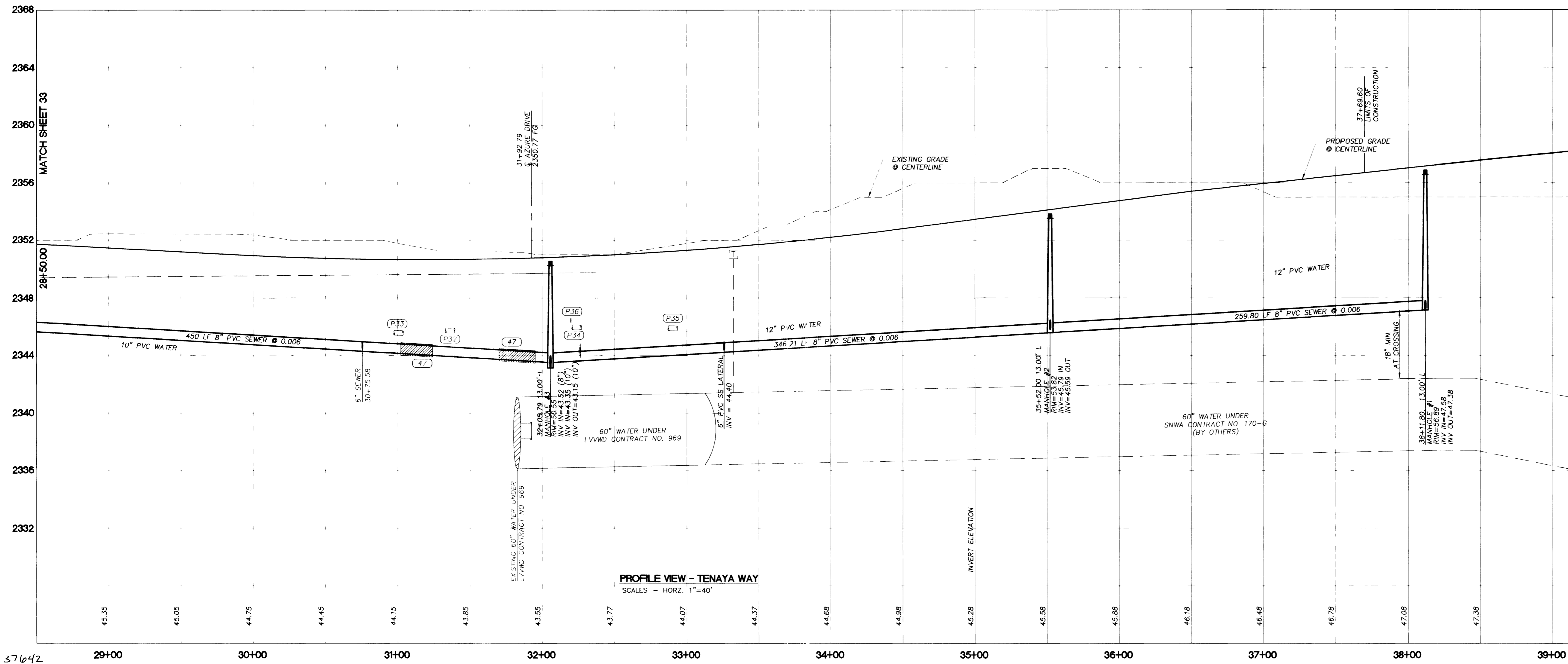
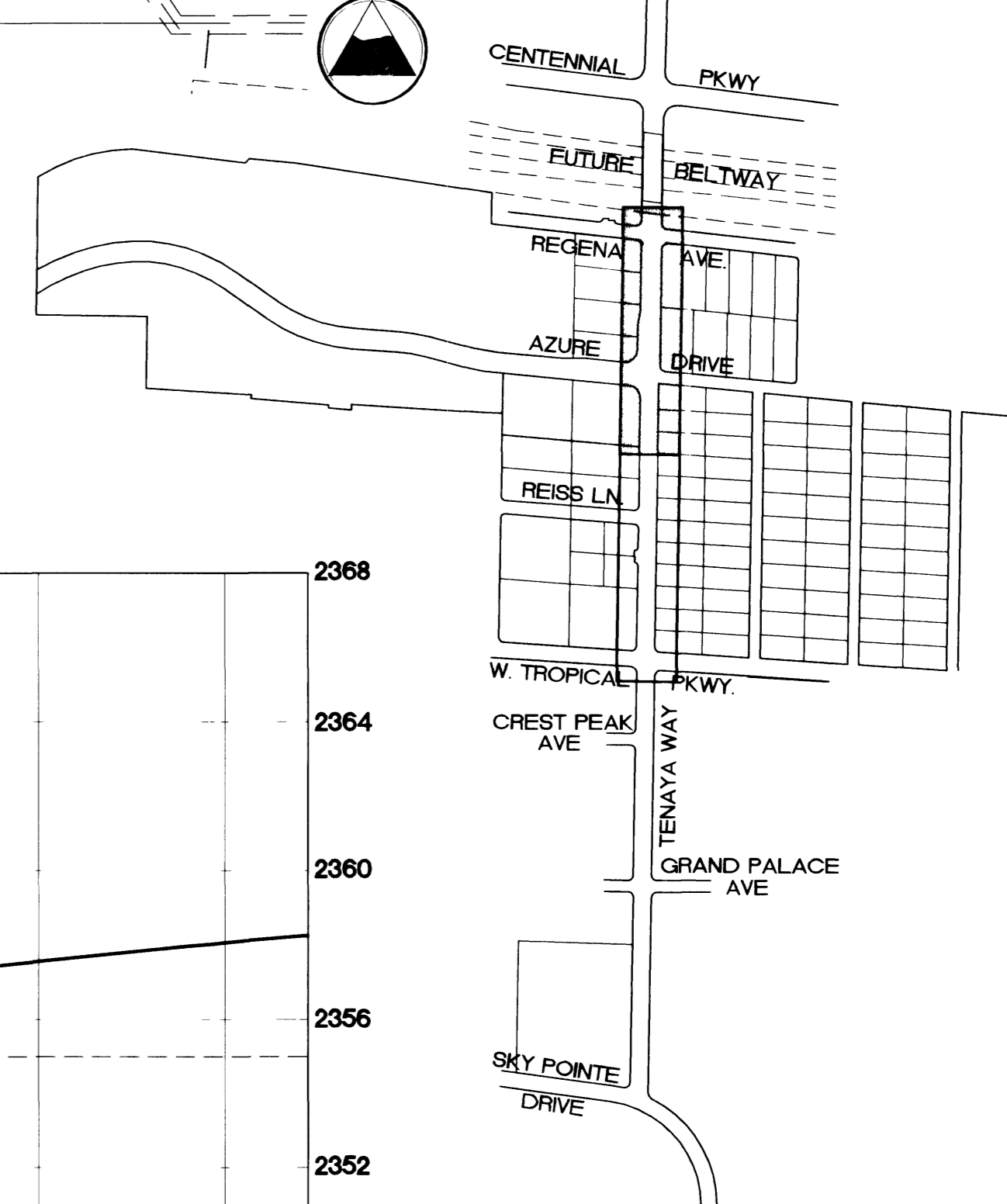
BENCHMARKS:
 #1LV90/27W4, CLV, PLS 2050 AL CAP W1/4 SEC.27
 ELEV. 2381.17 NAVD 88
 #1LV90/27N4, CLV, AL CAP, PLS 2984,
 CENTENNIAL PKWY & TENAYA WAY
 ELEV. 2356.41 NAVD 88

POTHOLE	STATION	OFFSET	UTILITY	DEPTH
(P32)	31+36.29	-37.55	ELECTRIC	50"
(P33)	31+00.60	-37.88	ELECTRIC	49"
(P34)	32+23.88	-37.60	ELECTRIC	47"
(P35)	32+90.21	-37.22	ELECTRIC	51"
(P36)	32+19.91	-3.36	4" TELEPHONE	18"

PLAN VIEW - TENAYA WAY
 SCALE: 1" = 40'



NOTE:
 CONTRACTOR SHALL FIELD LOCATE AND PROTECT ALL SNWA/SNWS ACCESS APPURTENANCES DURING CONSTRUCTION.
 CONTRACTOR WILL APPROPRIATELY ADJUST ALL SNWA ABOVE GROUND STRUCTURES AND AT GRADE STRUCTURES TO NEW GRADE AT CONTRACTOR'S EXPENSE. CONTRACTOR TO NOTIFY RICK DUSEK AT (702) 567-2301 AT LEAST 48 HOURS PRIOR TO CONSTRUCTION ACTIVITY WITHIN THE LIMITS OF SNWA/SNWS FACILITIES.



PROFILE VIEW - TENAYA WAY
 SCALES - HORIZ. 1"=40'

DISCLAIMER NOTE

UTILITY LOCATIONS SHOWN HEREON ARE APPROXIMATE ONLY. IT SHALL BE THE CONTRACTOR'S RESPONSIBILITY TO DETERMINE THE EXACT HORIZONTAL AND VERTICAL LOCATION OF ALL EXISTING UNDERGROUND UTILITIES PRIOR TO COMMENCING CONSTRUCTION. NO REPRESENTATION IS MADE THAT ALL EXISTING UTILITIES ARE SHOWN HEREON. THE ENGINEER ASSUMES NO RESPONSIBILITY FOR UTILITIES NOT SHOWN OR UTILITIES NOT SHOWN IN THEIR PROPER LOCATION.

DEPARTMENT OF PUBLIC WORKS ENGINEERING DESIGN SECTION

CITY ENGINEER: CHARLES KAJKOWSKI, JR., P.E.
 PROJECT MANAGER: THERESA M. HANRAHAN, P.E.

1000 W. TROPICAL AVENUE, SUITE A-3
 LAS VEGAS, NV 89146
 PHONE (702) 228-8183
 FAX (702) 228-8194

PRIMAS AND ASSOCIATES
 CONSULTING ENGINEERS

**TENAYA WAY
 SANITARY SEWER
 STATION 28+50 TO 39+00**

**TENAYA WAY / AZURE DRIVE
 ROADWAY IMPROVEMENTS**

SCALE: HORIZ. 1"=40' VERT. 1"=4'

DATE: 10/15/01

PROJECT NO: 007.010.01

SHEET 34 OF 70 SHEETS

DRAWING NO. 107-V3145