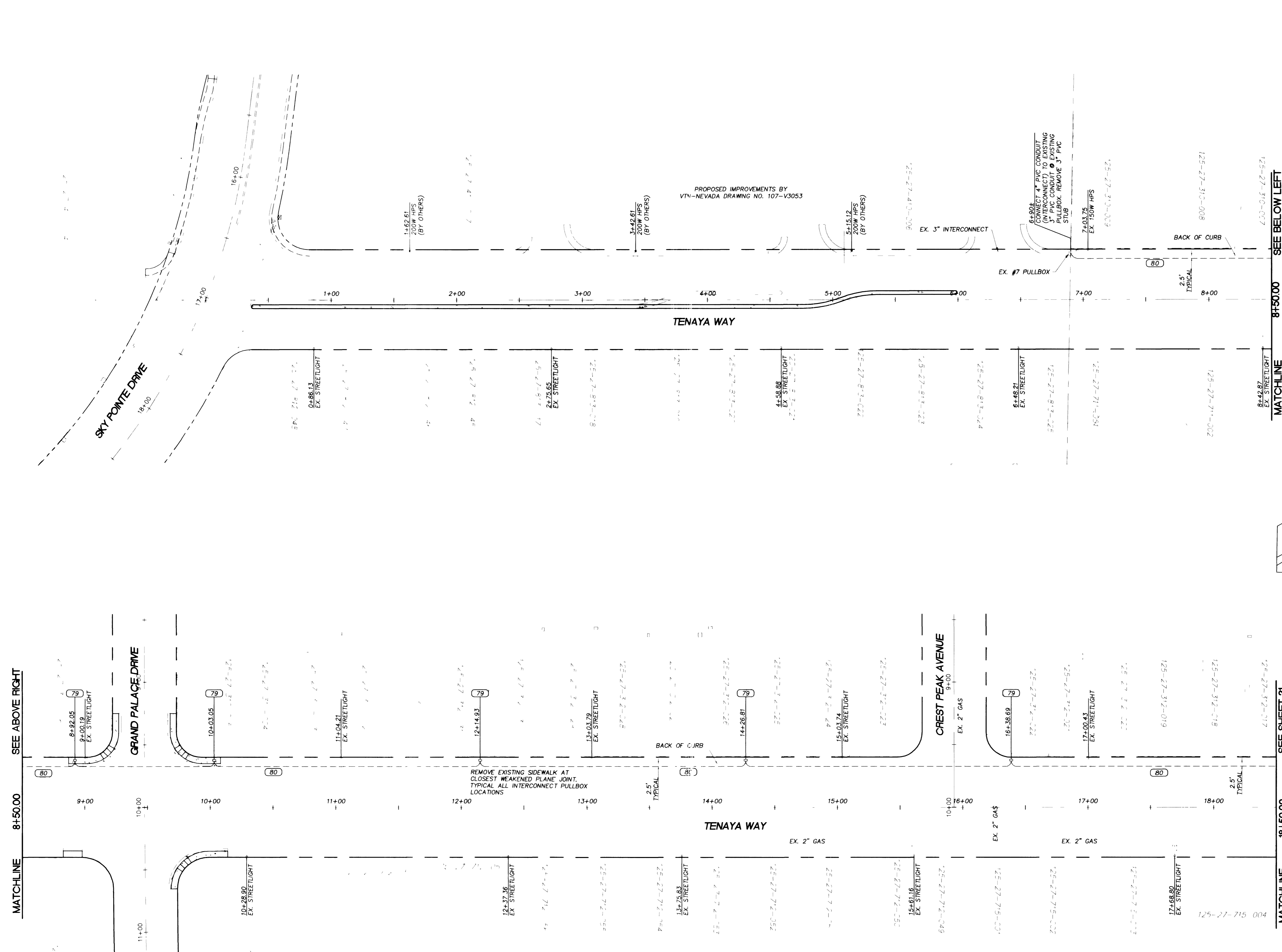
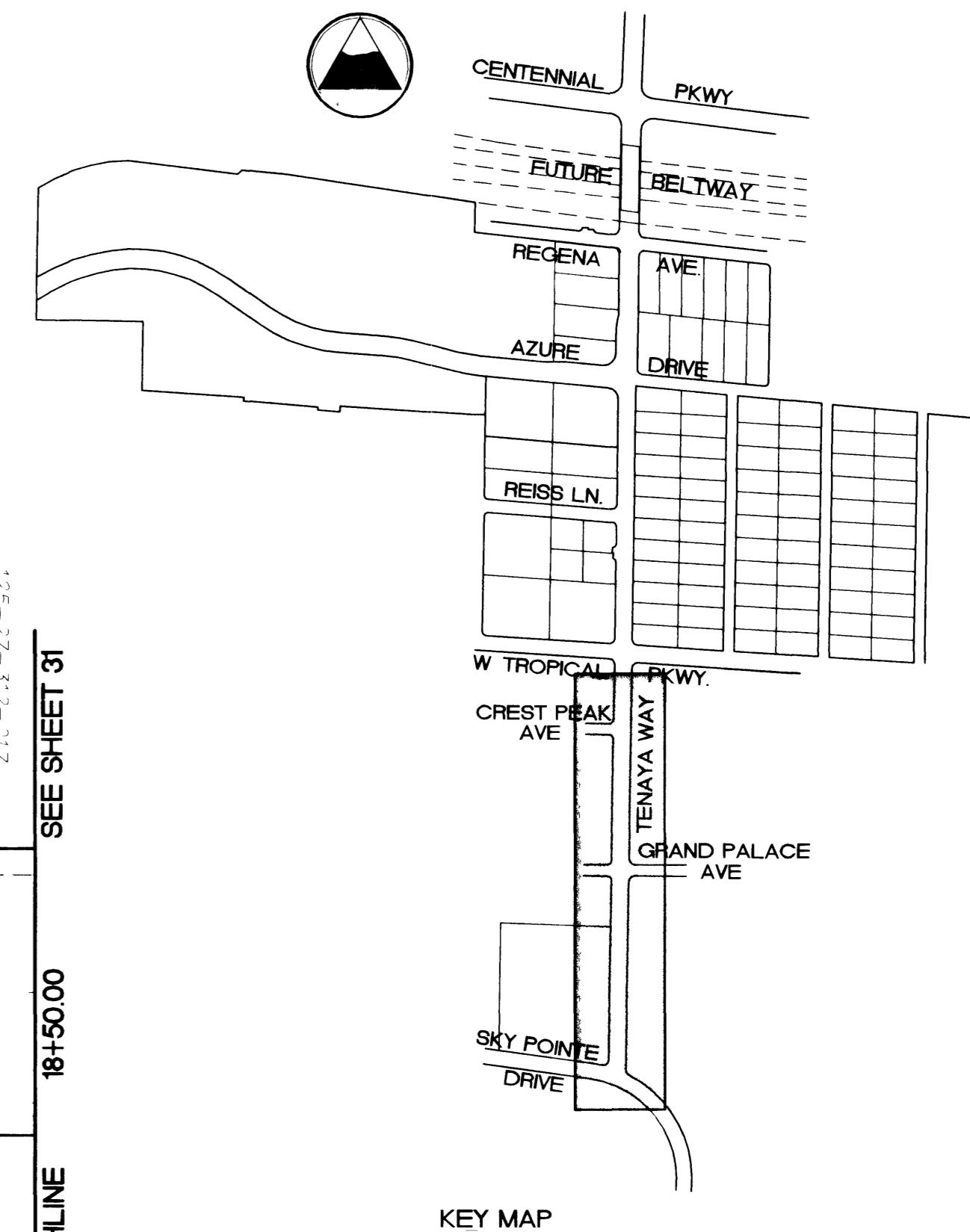
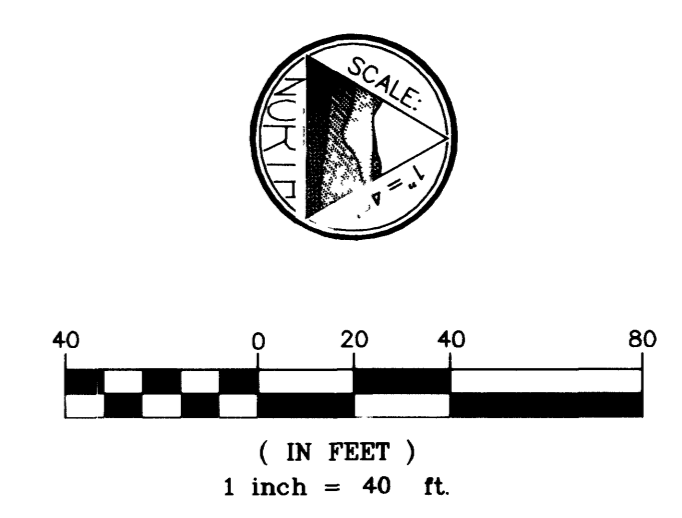


F:\PROJECTS\9007_01\9007-lighting.dwg, 09/14/2001, 07:24:06 AM EDT

37438



- CONSTRUCTION NOTES**
- STREET LIGHTING**
- (70) NEW STREET LIGHT ASSEMBLY (SEE TOWN CENTER STANDARDS)
 - (71) TYPE XX-A SIGNAL POLE WITH 250-WATT HPS LUMINAIRE (USD NO 314&321)
 - (72) 11-GALVEE STREET LIGHT ASSEMBLY WITH 250-WATT HPS LUMINAIRE (USD NO 314&321)
 - (73) TYPE XX-A SIGNAL POLE WITH 400-WATT HPS LUMINAIRE (USD NO 314&321)
 - (74) TOWN CENTER DOUBLE MAST ARM OVERHEAD STREETLIGHT WITH 250-WATT HPS LUMINAIRE
 - (75) 200 AMP SERVICE PEDESTAL (USD NO 330&332)
 - (76) 125 AMP SERVICE PEDESTAL (USD NO 330&332)
 - (77) NO. 3-1/2 PULLBOX (USD NO 326)
 - (78) NO. 5 PULLBOX (USD NO 326)
 - (79) NO. 7 PULLBOX - INTERCONNECT (USD NO 326)
 - (80) 3" CONDUIT (INTERCONNECT) WITH 25 PAIR #22 WIRE
 - (81) NOT USED
 - (82) 2" PVC CONDUIT FOR STREETLIGHT CIRCUITS WITH 2 #4 THW, 1 #6 THW



DISCLAIMER NOTE

Utility locations shown hereon are approximate only. It shall be the contractor's responsibility to determine the exact horizontal and vertical location of all existing underground utilities prior to commencing construction. No representation is made that all existing utilities are shown hereon. The engineer assumes no responsibility for utilities not shown or utilities not shown in their proper location.

<p>DEPARTMENT OF PUBLIC WORKS 400 EAST STEWART LAS VEGAS, NV 89101 (702) 229-5276</p>	<p>ENGINEERING DESIGN SECTION CITY ENGINEER: CHARLES KAJKOWSKI, JR., P.E. PROJECT MANAGER: THERESA M. HANRAHAN, P.E.</p>
<p>PRIMAS AND ASSOCIATES CONSULTING ENGINEERS</p>	<p>1091 CHAMBER ROAD, SUITE A-3 LAS VEGAS, NV 89135 PHONE: (702) 228-8183 FAX: (702) 228-8184</p>
<p>TENAYA WAY STREET LIGHTING STATION 0+00 TO 18+50</p>	<p>TENAYA WAY / AZURE DRIVE ROADWAY IMPROVEMENTS</p>
<p>DRAWN BY: _____ DESIGNED BY: _____ CHECKED BY: _____</p>	<p>SCALE: 1" = 40' HORZ VERT</p>
<p>PROJECT NO: 907-D1001</p>	<p>SHEET 30 OF 70 SHEETS DRAWING NO. 107-V3145</p>