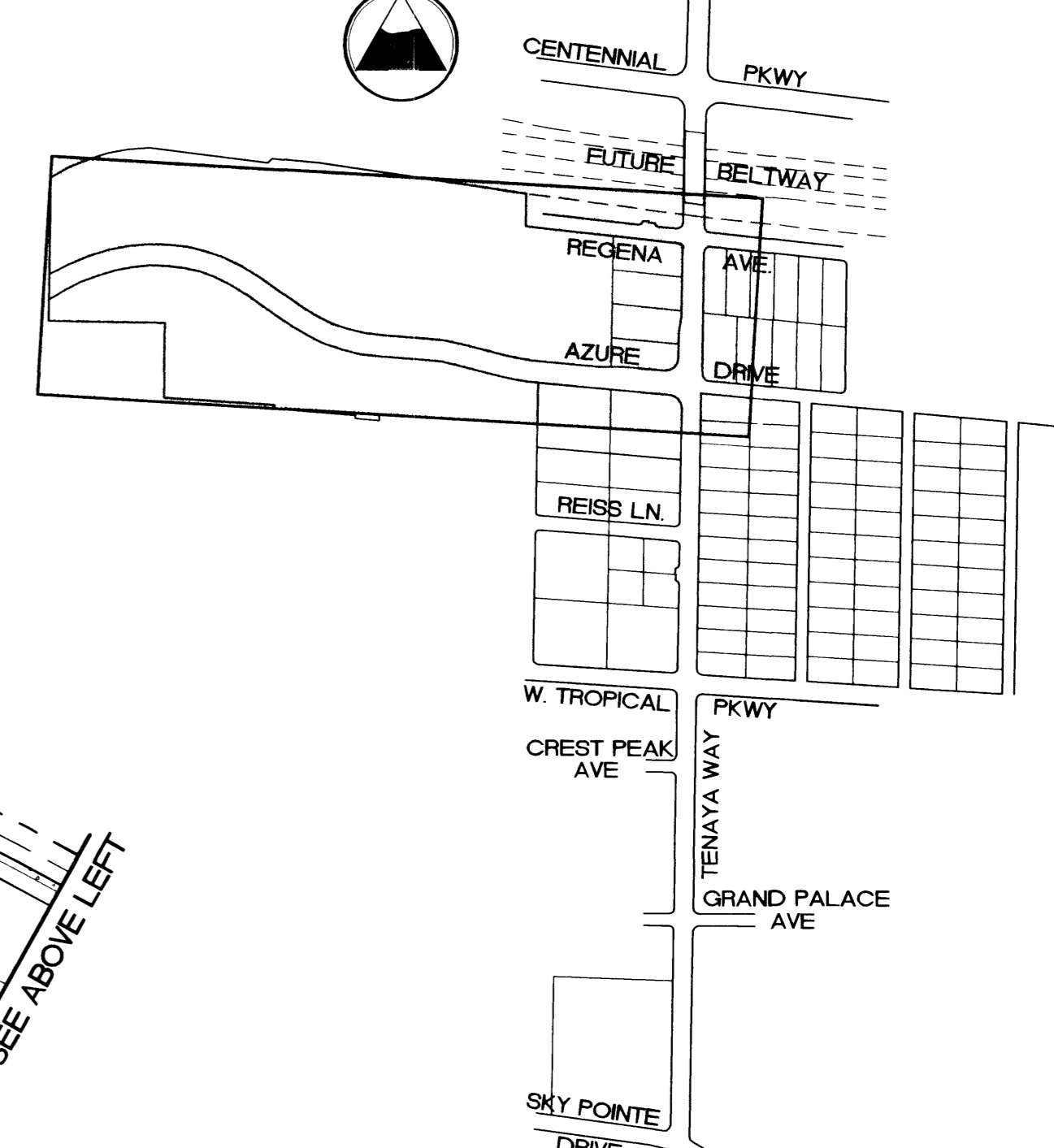
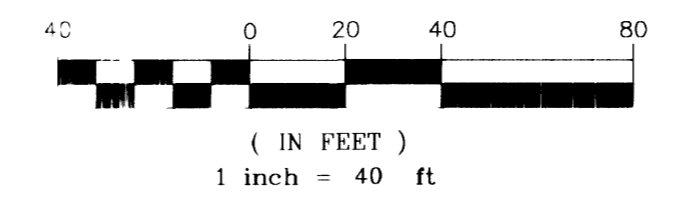


- TRAFFIC STRIPING**
- (50) TYPE 1 CENTERLINE (USD NO 224)
  - (51) TYPE 2 CENTERLINE (USD NO 224)
  - (52) TYPE 4 LANE LINE (USD NO 224A)
  - (53) TRANSITION SECTION (USD NO 245)
  - (54) RIGHT TURN LANE (USD NO 246)
  - (55) MINOR RIGHT TURN LANE (USD NO 246.2)
  - (56) STORAGE LANE LINE (USD NO 246)
  - (57) MEDIAN NOSE MARKING (USD NO 248)
  - (58) 24" WIDE CROSSWALK LINES (PMF)
  - (59) 6" WIDE SOLID WHITE LINE (PMF)
  - (60) WHITE PAVEMENT "ARROW" (PMF)
  - (61) WHITE PAVEMENT "ONLY" (PMF)
  - (62) 24" WIDE STOP BAR (PMF)
  - (63) WHITE PAVEMENT "BIKE LANE" (PMF)
  - (64) 8" SOLID WHITE LINE
  - (64A) WHITE PAVEMENT "BIKE LANE" (PMF) (INCLUDES DIAMOND AND ARROW PAINTED AT APPROXIMATE 250' INTERVALS WITHIN DESIGNATED BIKE LANE.)
  - (65) 8"x2' STRIPES 8' ON CENTER (USD 246-1)
  - (66) 8"x3' STRIPES DROP LANE (USD 246A)
- TRAFFIC SIGNAGE**
- (70) INSTALL NEW TRAFFIC SIGN

- SIGN LEGEND**
- |  |       |  |             |
|--|-------|--|-------------|
|  | R1-1  |  | R3-7R       |
|  | R2-1  |  | R3-7L       |
|  | R3-17 |  | R4-7        |
|  | R6-1R |  | R3-7L (SPL) |
|  | W1-2L |  | R4-4        |
|  | R2-5a |  |             |



**DISCLAIMER NOTE**

Call before you Dig

Call before you Overhead

KEY MAP

**BASIS OF BEARING:**  
 NORTH AMERICAN DATUM - 1983 (NAD83), NEVADA COORDINATE SYSTEM - 1983 (NCS83), EAST ZONE (2701), MODIFIED AS SHOWN BY A MAP ON FILE IN THE OFFICE OF THE COUNTY RECORDER, CLARK COUNTY, NEVADA IN FILE 89 OF RECORDS OR SURVEYS, PAGE 3

**BENCHMARKS:**  
 #1LV90/27W4, CLV, PLS 2050 AL CAP W/4 SEC 27 ELEV. 2381.17 NAVD 88  
 #1LV90/27W4, CLV, AL CAP, PLS 2984, CENTENNIAL PKWY & TENAYA WAY ELEV 2356.41 NAVD 88

SHEET <b>TS3</b> 29 OF 70 SHEETS DRAWING NO. <b>107-V3145</b>	TITLE <b>AZURE DRIVE SIGNAGE AND STRIPING PLAN STA 10+00 TO 36+50 TENAYA WAY / AZURE DRIVE ROADWAY IMPROVEMENTS</b>	DEPARTMENT OF PUBLIC WORKS CITY ENGINEER: CHARLES KAJKOWSKI, JR., P.E. PROJECT MANAGER: THERESA M. HANRAHAN, P.E. 1031 GARDEN ROAD, SUITE A-3 LAS VEGAS, NV 89101 PHONE (702) 228-8193 FAX (702) 228-8194	ENGINEERING DESIGN SECTION REVISION BY DATE
---	--	---	--