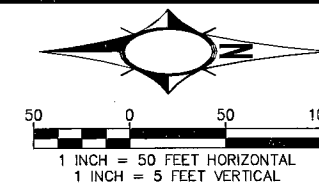
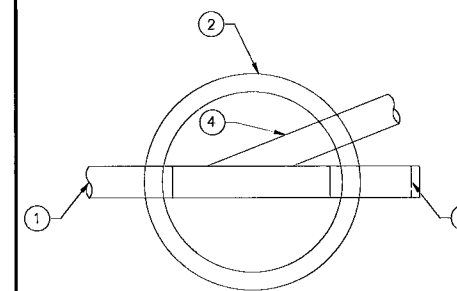


▲ JANUARY 28, 2009

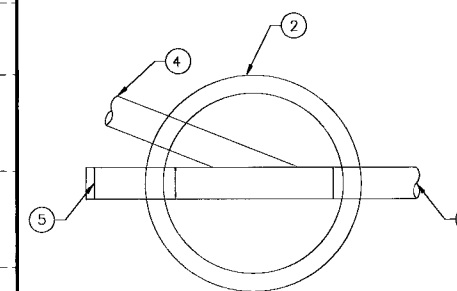


SANITARY SEWER TO BE RELOCATED PRIOR TO BRIDGE AND ROADWAY CONSTRUCTION



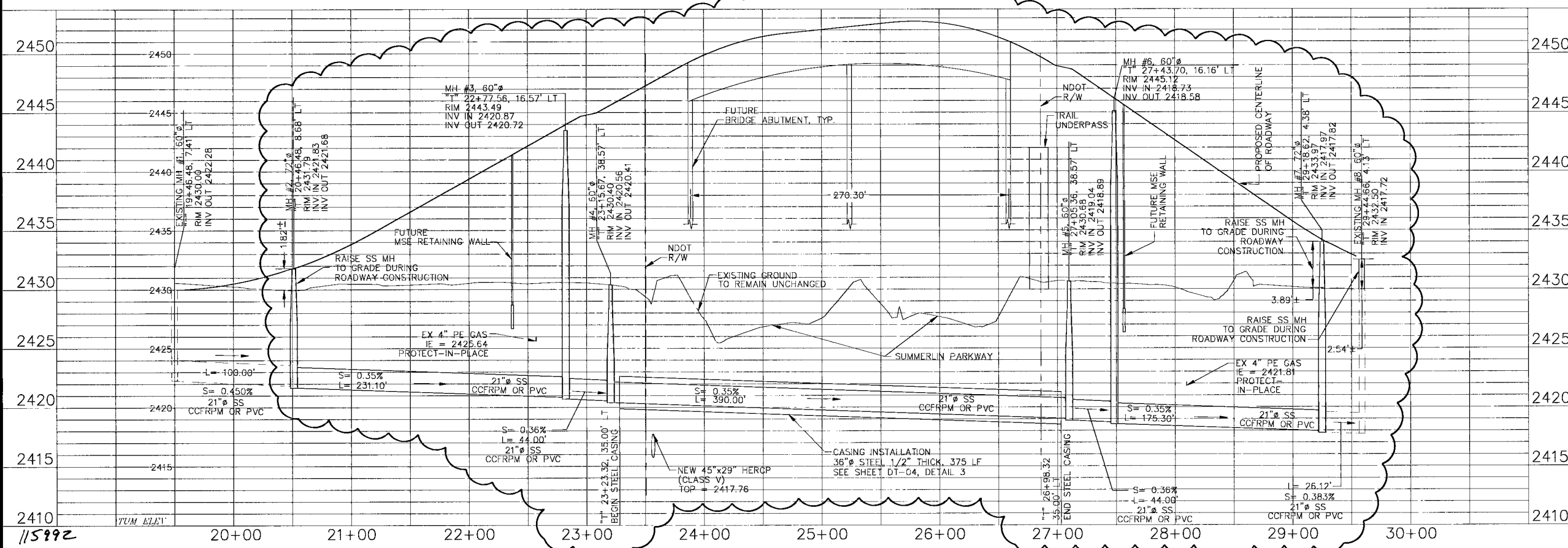
SANITARY SEWER CONNECTION DETAIL A

- NOTES: FOLLOW THE BELOW CONSTRUCTION SEQUENCE
- EXISTING SANITARY SEWER SHALL REMAIN IN SERVICE DURING MANHOLE CONSTRUCTION.
 - CONSTRUCT MANHOLE BASE.
 - CONSTRUCT MANHOLE OVER EXISTING PIPE WITH A KNOCK OUT FOR THE NEW PIPE.
 - CONNECT NEW PIPE INTO THE MANHOLE.
 - PLUG THE EXISTING PIPE, REMOVE SECTION OF EXISTING PIPE, AND PLACE NEW PIPE INTO SERVICE.
 - RAISE SS MANHOLE TO GRADE DURING ROADWAY CONSTRUCTION.



SANITARY SEWER CONNECTION DETAIL B

- NOTES: FOLLOW THE BELOW CONSTRUCTION SEQUENCE
- EXISTING SANITARY SEWER SHALL REMAIN IN SERVICE DURING MANHOLE CONSTRUCTION.
 - CONSTRUCT MANHOLE BASE.
 - CONSTRUCT MANHOLE OVER EXISTING PIPE WITH A KNOCK OUT FOR THE NEW PIPE.
 - CONNECT NEW PIPE INTO THE MANHOLE.
 - PLUG THE EXISTING PIPE, REMOVE SECTION OF EXISTING PIPE, AND PLACE NEW PIPE INTO SERVICE.
 - RAISE SS MANHOLE TO GRADE DURING ROADWAY CONSTRUCTION.



| NO. | DATE | DESCRIPTION |
|-----|------|----------------------------------|
| 1 | 2009 | SANITARY SEWER REVISED ALIGNMENT |

DEPARTMENT OF PUBLIC WORKS
ENGINEERING DESIGN SECTION
 CITY ENGINEER: JORGE CERVANTES, P.E.
 PROGRAM MANAGER: MARK SORENSEN, P.E.
 DESIGNED BY: AE
 DRAWN BY: AE
 CHECKED BY: MC
 H2R Engineering, Inc.
 HORIZONTAL SCALE: 1"=50'
 VERTICAL SCALE: 1"=5'
 DATE: 1/2009

TENAYA WAY OVERPASS AT SUMMERLIN PKWY
SANITARY SEWER PLAN AND PROFILE

PROFESSIONAL ENGINEER
 JOHN M. CHAPMAN
 CIVIL
 No. 14795
 State of Nevada

Sheet **SS-01**
 of
 DRAWING NO. **107Y4452**

Call before you Dig
 1-800-227-2600

Call before you Overhead
 1-702-452-5300

SAFETY ALERT
 Call before you Dig
 1-702-452-5300

P:\Tenaya\Sheets\Utility Conflict Revisions\SS-001_Rev.1.27.09.dwg 01/29/09 4:28pm cobdo