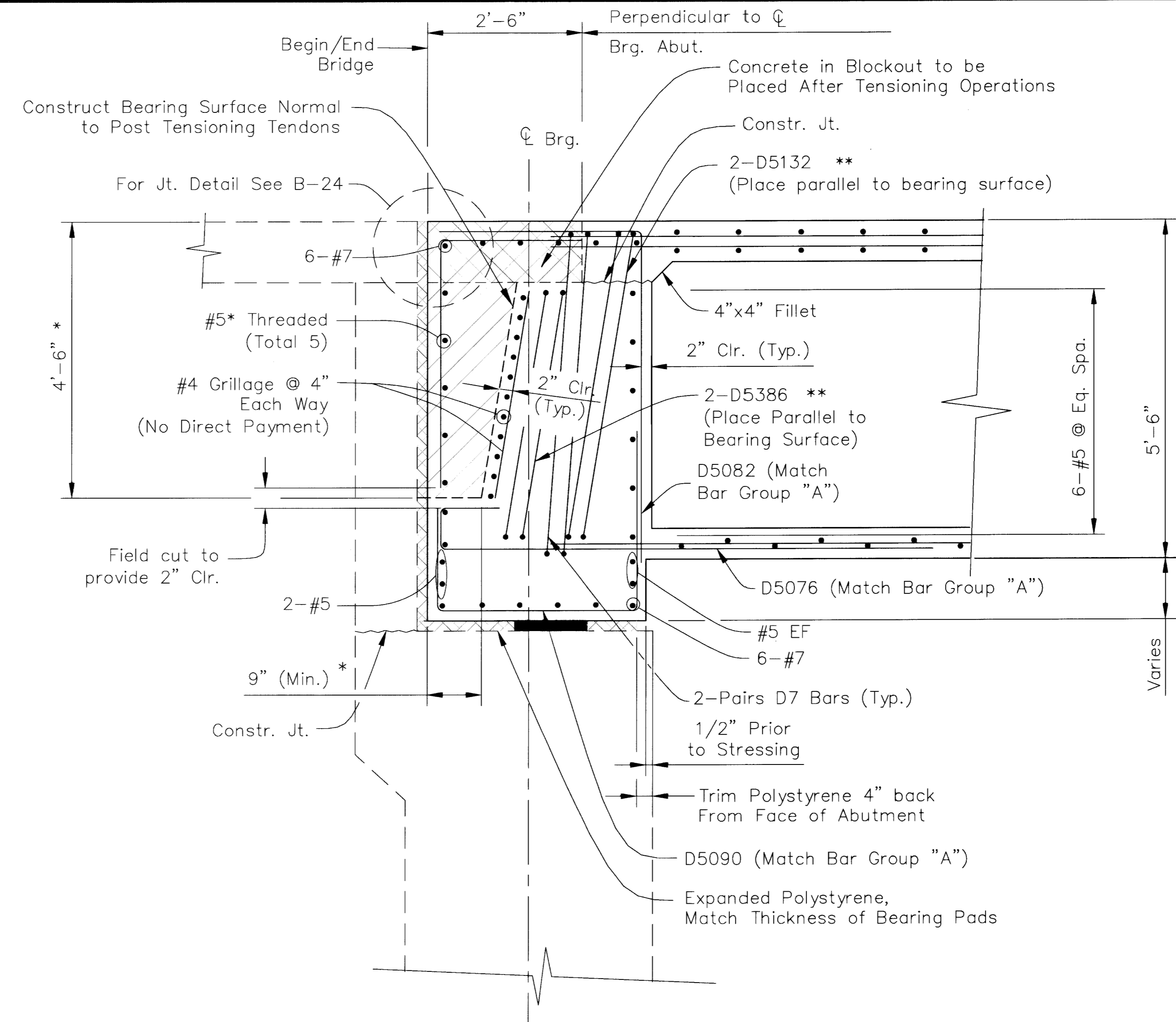
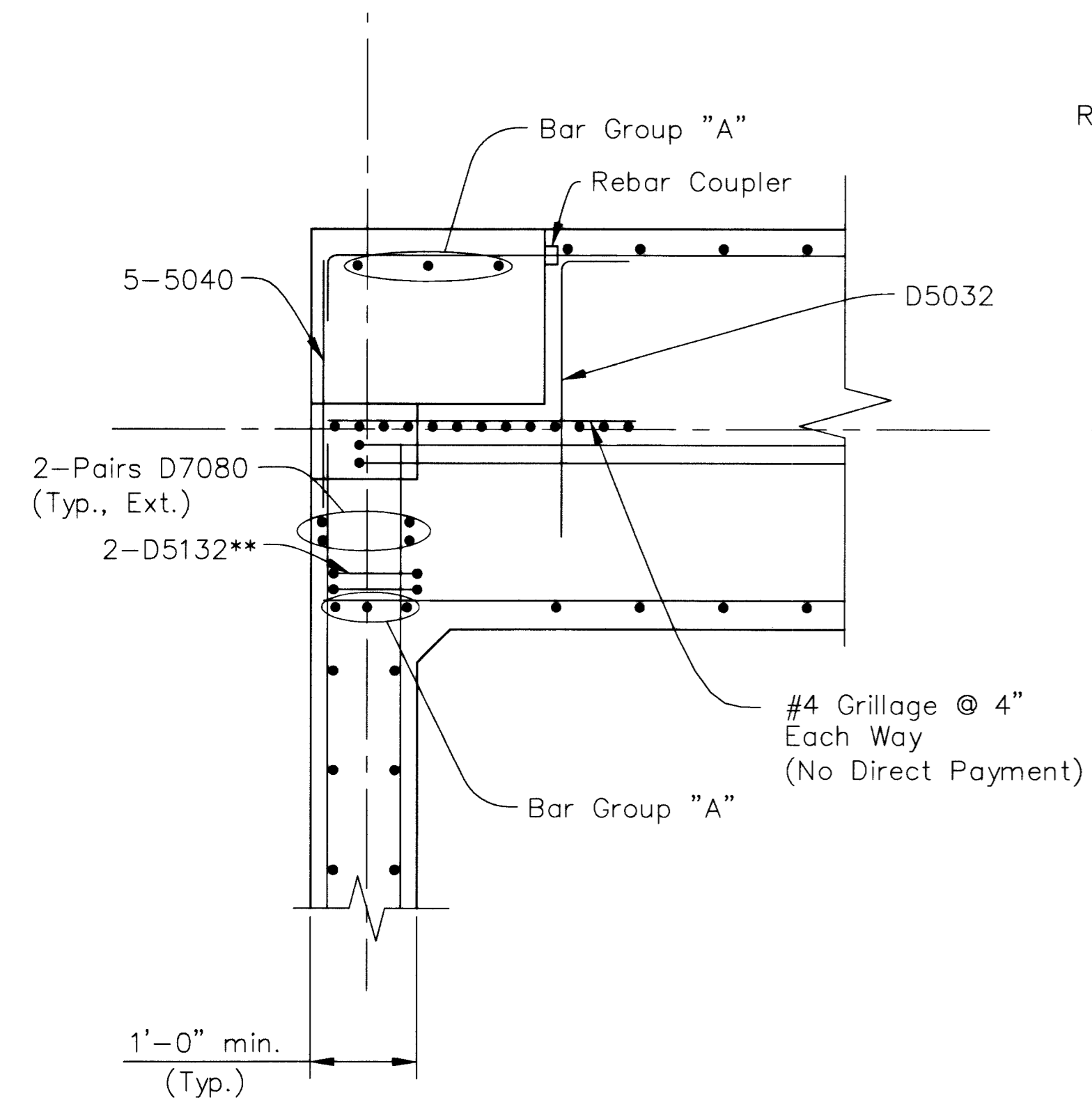


SECTION 1

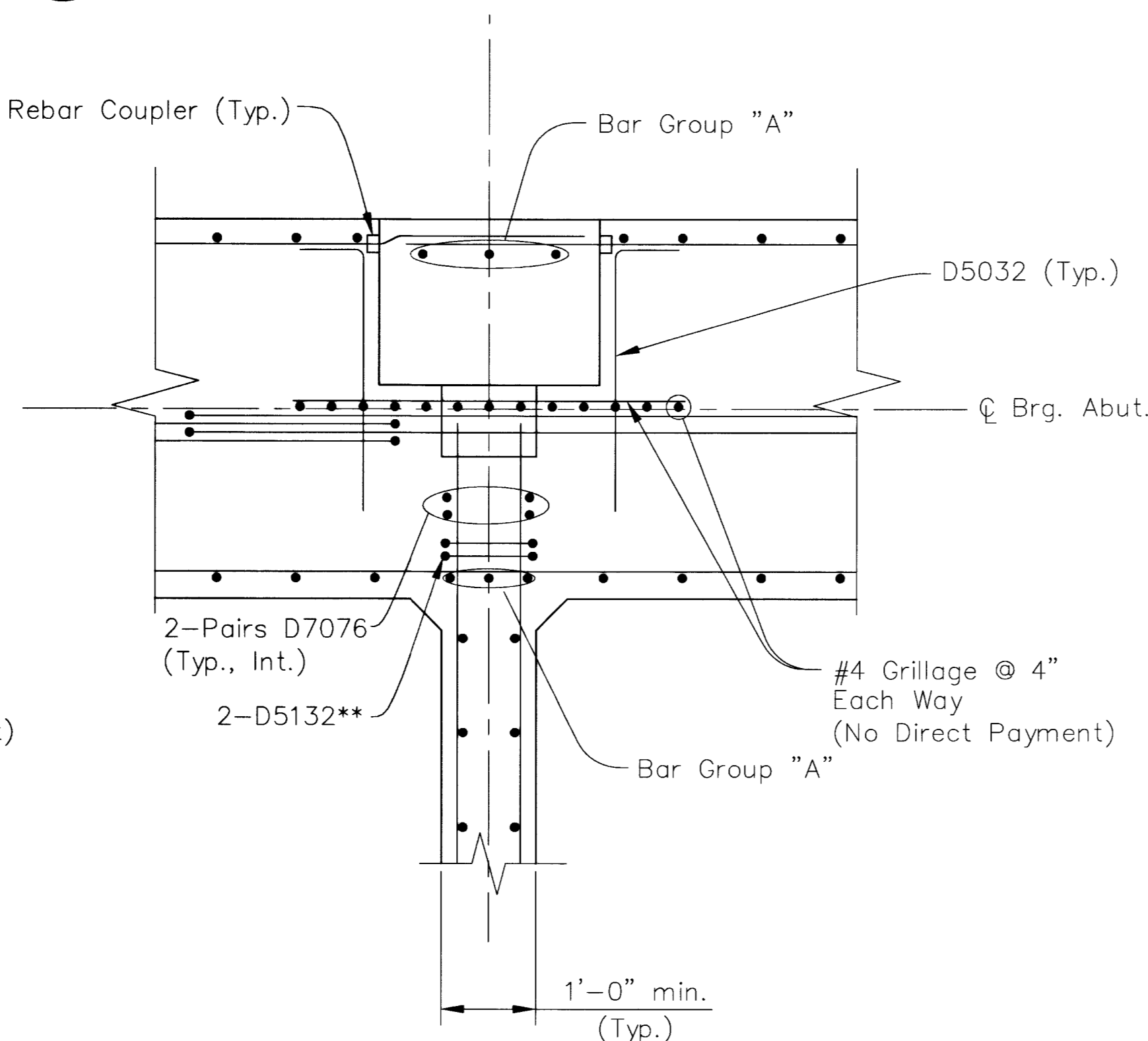


SECTION 2

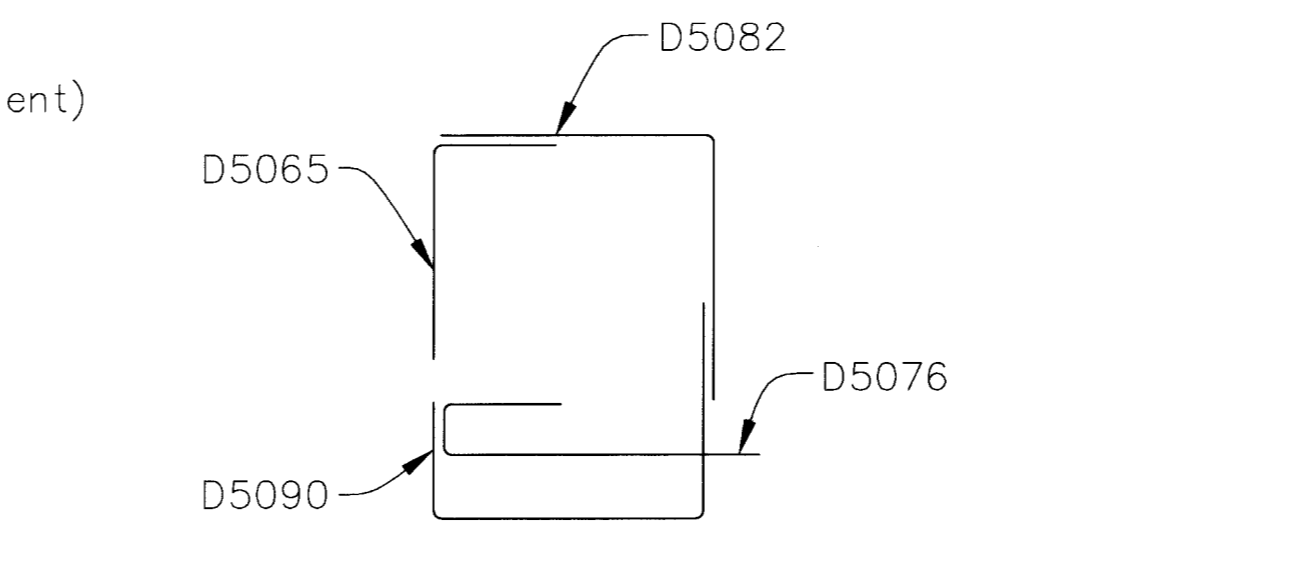
* To be determined by the contractor



DETAIL 4



DETAIL 5



REINFORCING BAR GROUP "A" 3
(24 Req'd. per Abutment)

Notes:

1. Blockout dimensions (*) shall be verified by the post-tensioner and approved by the Engineer, prior to construction.
2. Reinforcement (**) shall be verified by post-tensioner and approved by Engineer after anchorage system has been selected and prior to construction.
3. Hatched areas indicate portions of f'c = 5000 psi concrete to be poured after post-tensioning has been completed.
4. Diaphragm stirrups and ties shall be placed parallel to C/Girder.
5. Adjust reinforcement as required to clear ducts.

Legend:

- [Hatched Box] Expansion Joint Blockout
- [Hatched Box] Post-Tensioning Blockout

NO.	DATE	DESCRIPTION

DEPARTMENT OF PUBLIC WORKS
ENGINEERING DESIGN SECTION

CITY ENGINEER: JORGE CERVANTES, P.E.
PROGRAM MANAGER: MARK SORENSEN, P.E.

DESIGNED BY: MA
DRAWN BY: CG
CHECKED BY: CS

HORIZONTAL SCALE: N/A
VERTICAL SCALE: N/A
DATE: 10/2007

FDR
FDR Engineering, Inc.

TENAYA WAY OVERPASS
AT SUMMERLIN PKWY H-2858

ABUTMENT NO. 1
DIAPHRAGM DETAILS

TITLE: SHEET:

MANAS ASTHANA
Exp. 12-31-08
CIVIL
Professional No. 016957

Sheet
B-18
60 of 96
DRAWING NO.
1074452

P:\Tenaya\Sheets\B-18.dwg 10/18/07 3:45pm aabdo

109503