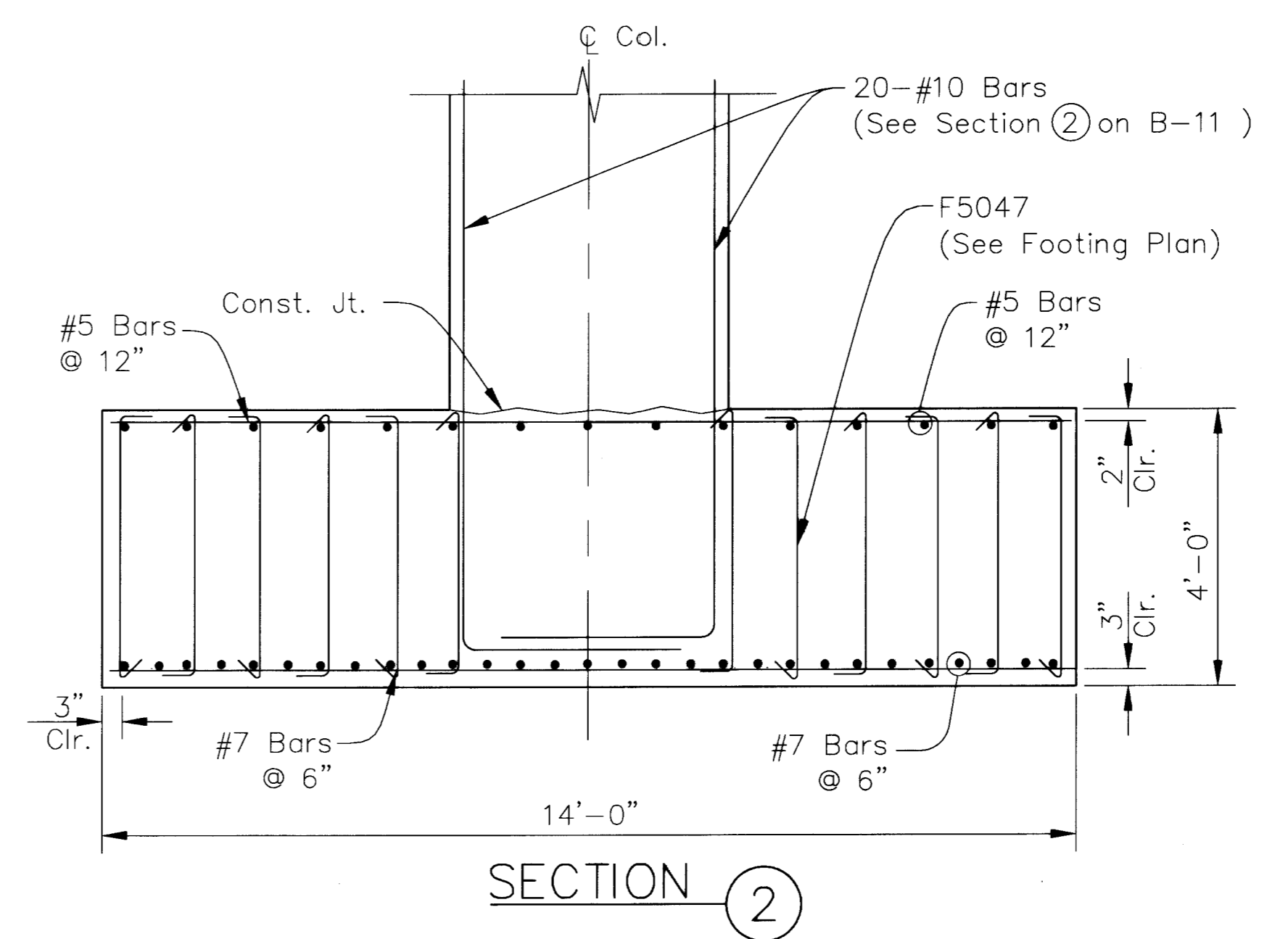
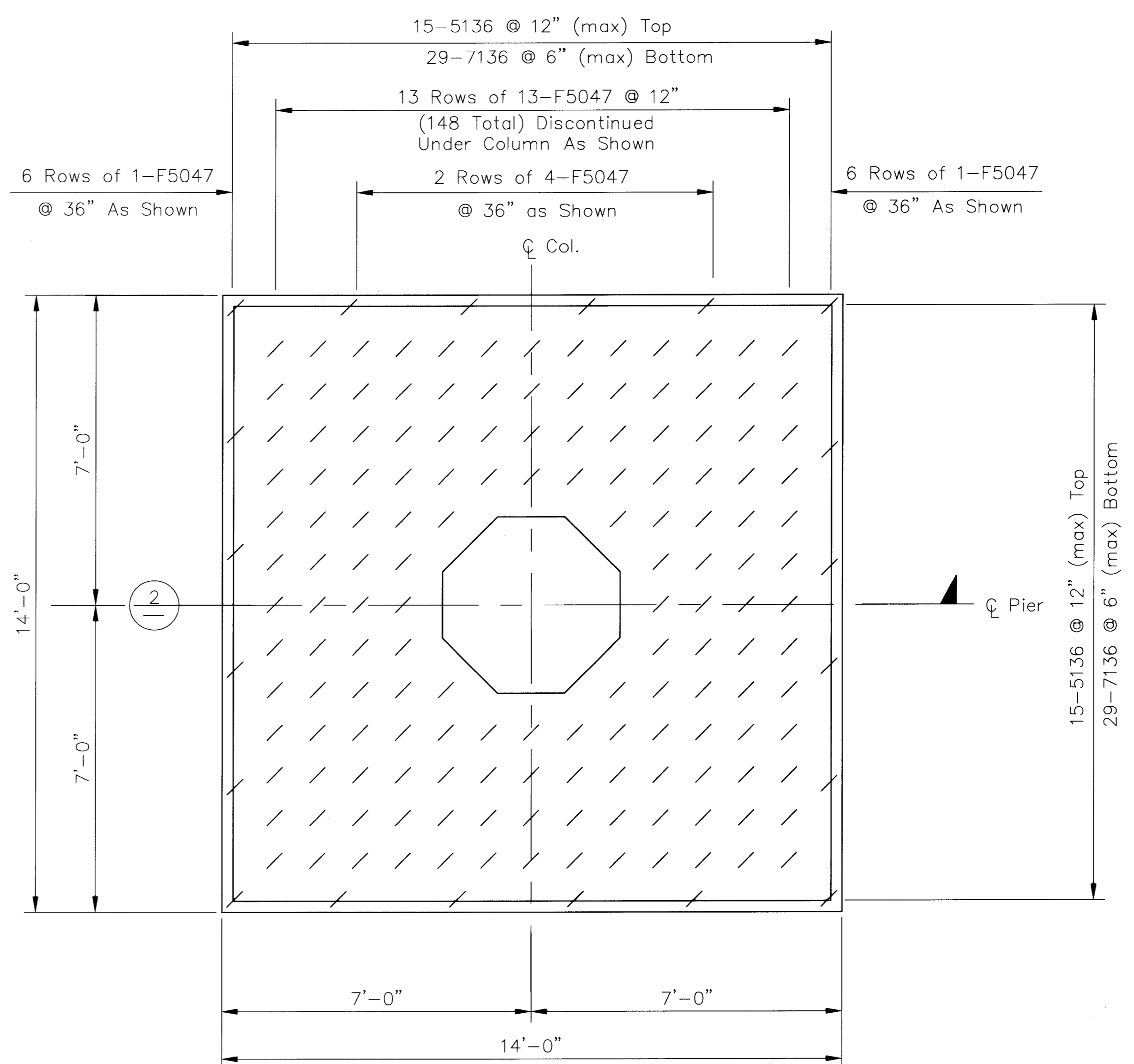


SECTION 1

- Notes:**
1. Provide 1/2 turn minimum for lap splices and 1 1/2 turns at end of spiral. Anchor ends of spiral and splice with a 135° hook around a vertical bar.
  2. Spiral may be discontinuous at reinforcement layers at bottom of cap and top of footing. Lap Spiral 1 1/2 turns and fillet weld the lapped turn to provide for 125% of specified bar yield strength.
  3. Cold-drawn steel wire for spiral reinforcement shall conform to ASTM A706.



SECTION 2



FOOTING PLAN

NO.	DATE	DESCRIPTION

**DEPARTMENT OF PUBLIC WORKS**  
**ENGINEERING DESIGN SECTION**

CITY ENGINEER: JORGE CERVANTES, P.E.  
PROGRAM MANAGER: MARK SORENSEN, P.E.

DESIGNED BY: MA  
DRAWN BY: CG  
CHECKED BY: LA

HDR Engineering, Inc.  
HORIZONTAL SCALE: 1/2"=1'  
VERTICAL SCALE: N/A  
DATE: 10/2007

TITLE: TENAYA WAY OVERPASS H-2858  
AT SUMMERLIN PKWY

SHEET: PIER FOOTING AND COLUMN DETAILS

MANAS ASTHANA  
Exp. 12-31-08  
CIVIL

Sheet B-10  
52 of 96  
DRAWING NO. 107Y4452

P:\Tenaya\Sheets\B-10.dwg 10/18/07 3:48pm abdo

109995