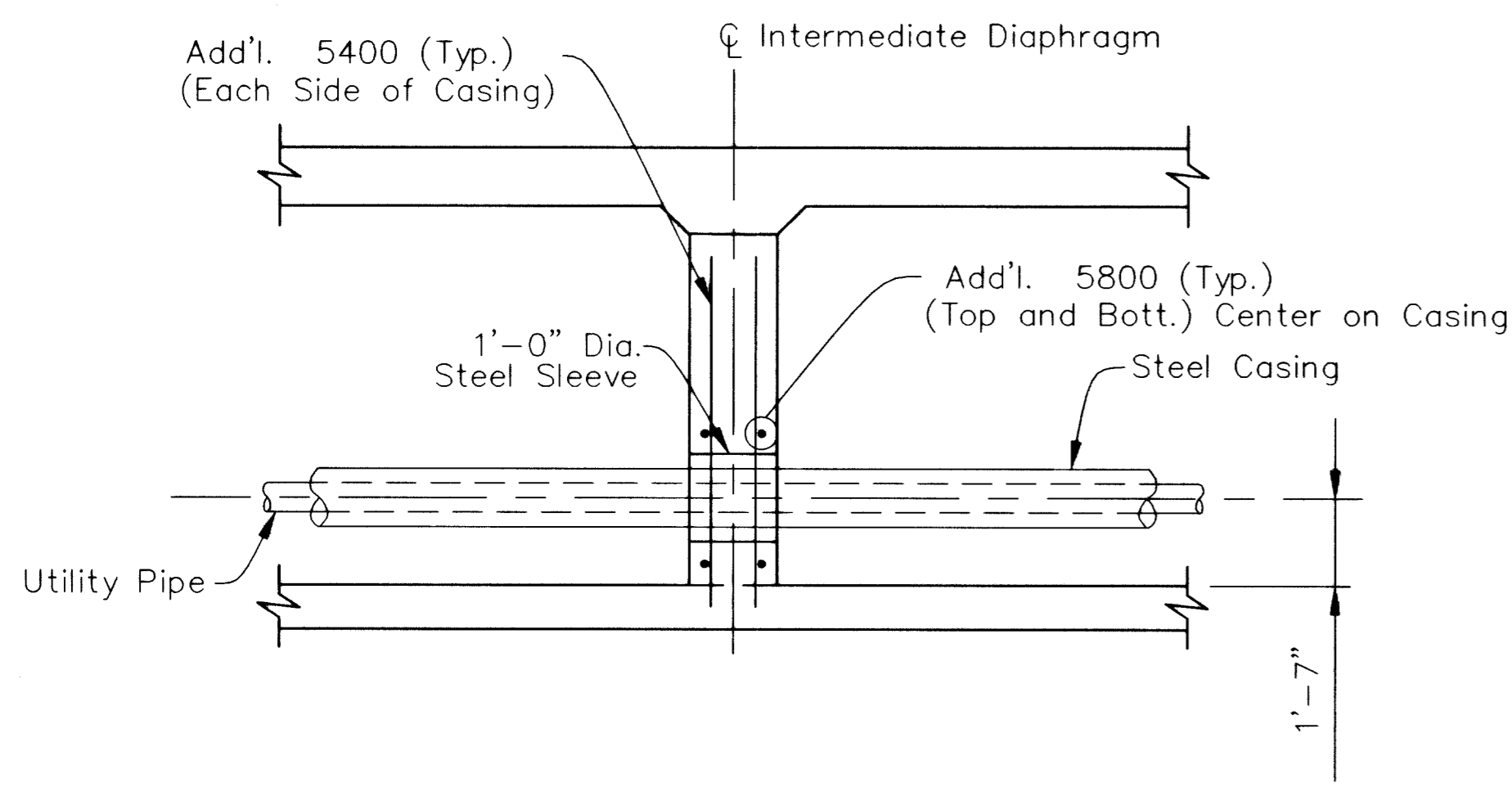
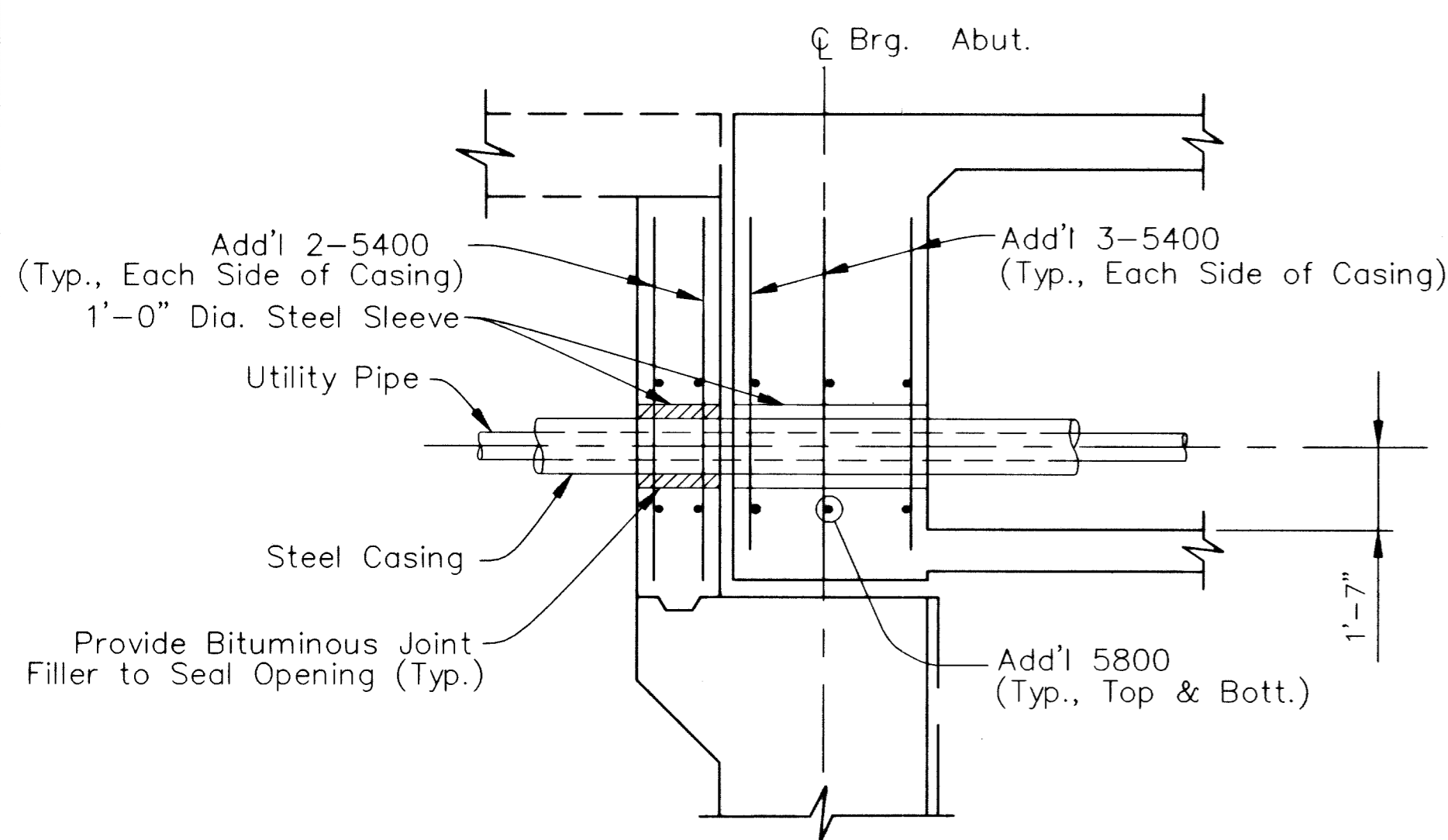


AT PIER



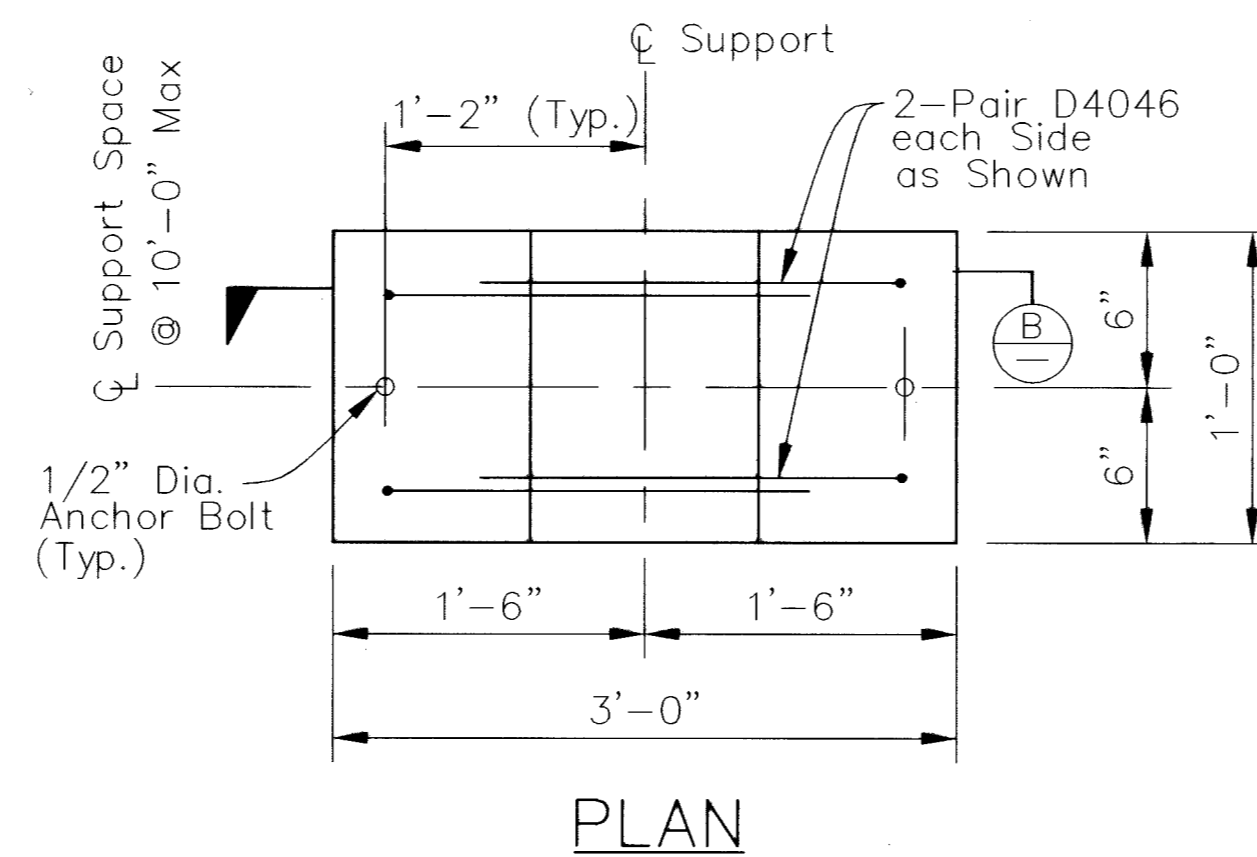
AT INTERMEDIATE DIAPHRAGM



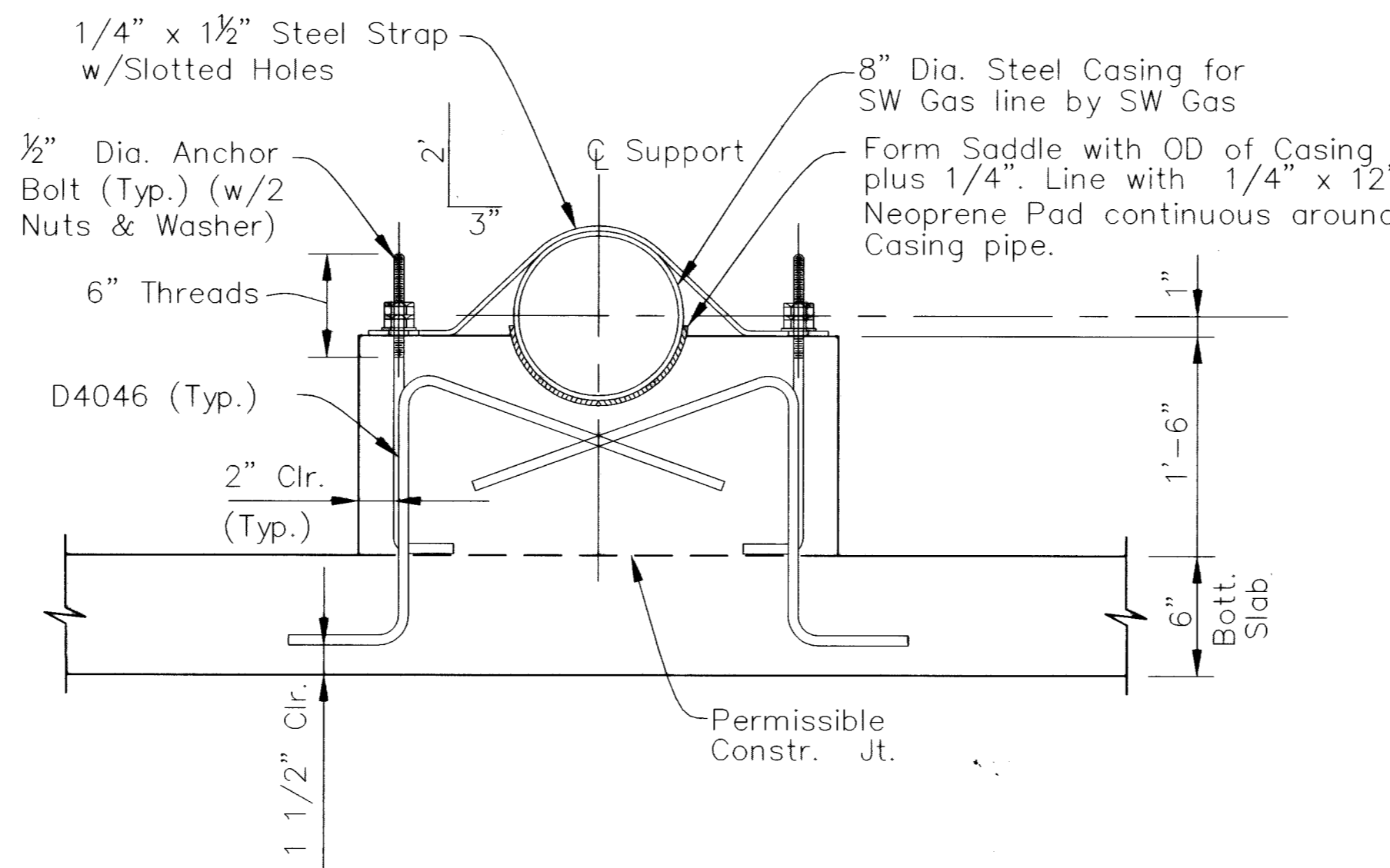
AT ABUTMENT

Note:
Typical reinforcing bars to be relocated as directed by the Engineer to clear openings for utility sleeves unless noted otherwise.

TYPICAL UTILITY OPENING DETAIL



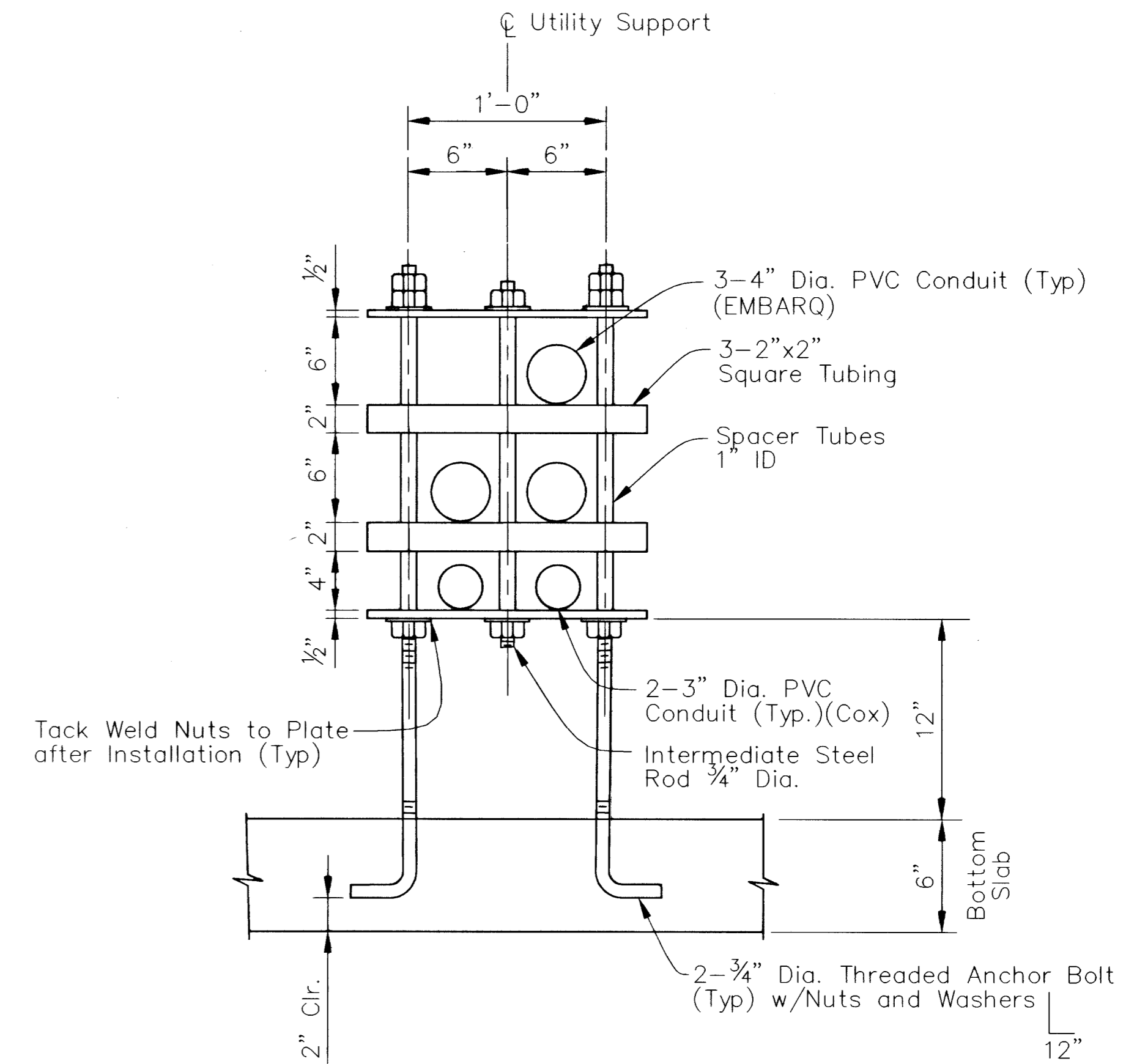
PLAN



SECTION A

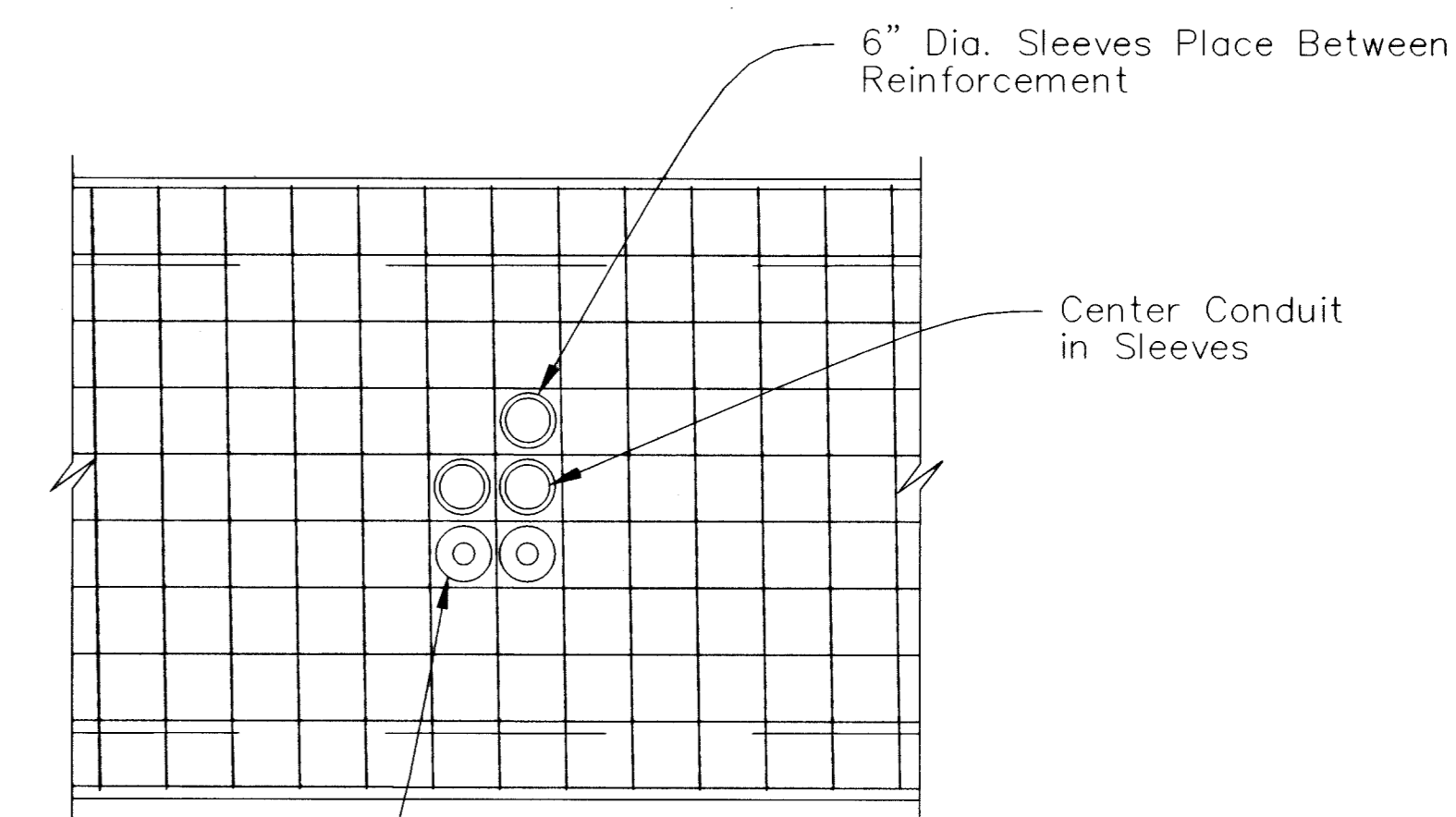
TYPICAL UTILITY SUPPORT DETAIL

Note:
Utility supports shall be spaced at 10'-0" maximum centers from centerline of bearing abutment to centerline of pier (locate to avoid access openings).



CONDUIT SUPPORT DETAIL

Spaced @ 10'-0" on Center



DETAIL B

CONDUITS @ ABUTMENTS DIAPHRAGMS, INTERMEDIATE DIAPHRAGMS, BACKWALL AND PIER CAP

Utility Notes:

- All bars, plates and straps shall conform to AASHTO M270 Grade 36 and shall be galvanized.
- Anchor bolts, nuts and washers shall conform to ASTM A307 and shall be galvanized.
- Sleeves shall conform to ASTM A53 Grade B and shall be galvanized.
- Casings shall be installed by SW GAS. See special provisions.
- Contractor shall construct and supply all materials required for the utility supports, sleeves and openings. No direct payment for anchor bolts, nuts and straps.

NO.	DATE	DESCRIPTION

DEPARTMENT OF PUBLIC WORKS
ENGINEERING DESIGN SECTION
CITY ENGINEER: JORGE CERVANTES, P.E.
PROGRAM MANAGER: MARK SORENSEN, P.E.
DESIGNED BY: MA
DRAWN BY: CG
CHECKED BY: CS
HDR Engineering, Inc.
DATE: 1/2008
VERTICAL SCALE: N/A
HORIZONTAL SCALE: N/A

TENAYA WAY OVERPASS AT SUMMERLIN PKWY H-2858
MIDSPAN DIAPHRAGM UTILITY DETAILS

Sheet
B-27A
70 of 96
DRAWING NO.
107Y4452

